



- News
- Gallery
- Repair
- Music
- Manuals
- References
- About me

0

Rear 310 mm. brakes



Saturday, September 25, 2010

Sections

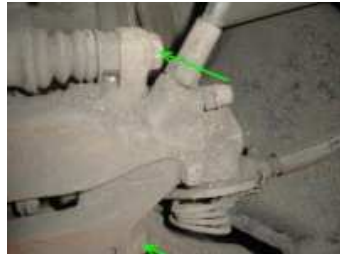
- Heating and Air Conditioning
- Body
- Wipers
- Cooling system
- Injection system
- Suspension
- Steering
- Electrician
- Engine
- Tuning

Installation 310 mm. rear brake discs on Audi 100/S4. Thanks for the idea guys from [Esgarazha](#) .

1. Jacking the car, remove the wheel.



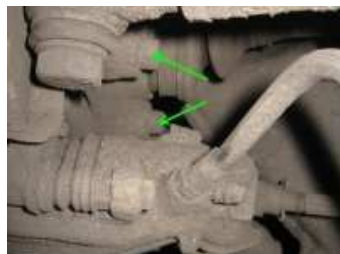
2. Old brake disc is usually due to wear a collar that prevents remove the caliper assembly with pads, so it's easier to remove the caliper frame by unscrewing the two screws.



3. Remove the pads.



4. Unscrew hexagon 8 caliper mounting bolts to the hub, remove the caliper.



Advertising

5. Try on and fasten the spacer and the brake disk. Use new bolts, the old do not fit, they are short.



6. Look, that there was a gap between the brake disc and caliper frame.



7. Install the new pads, fasten the caliper to the frame. To down piston calipers, you need to rotate around its axis while pressing on it.



8. First problem: the parking brake cable does not reach the seat, loosen the cable tension on the rod and then the parking brake cable is installed properly.



9. The second problem touches the edge of the caliper Rim, tried two different disks on the 16 ", with original and replica flying 40 to 35 tickets are both hurt. Also interfere with the balance weights disk (if any).



The diameter of the disc in touch 362mm. It is possible with the other disks configuration and flight, the support will not be hurt. Balancing weights also should be removed from the contact zone and rebalance the tires.



Well, in my case the problem persists removing metal grinder with calipers in these locations. The clearance was received with reserve, three millimeters.





If you install winter tires still found that the caliper touches the disk due to the larger offset. I had to put a spacer made of metal, of a thickness of 10 mm.

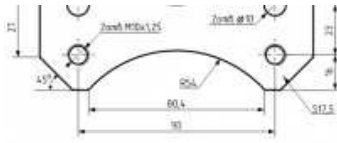


For tuning the brakes needed:
Brake discs 4E0615601A (2 pcs.)



Spacer plate (made to order, 2 pcs.)





Brake pads 4D0698451A (1 set).

Mounting bolts N 907 403 02 (4 pieces).



Mounting bolts N 910 587 02 (4 pieces).

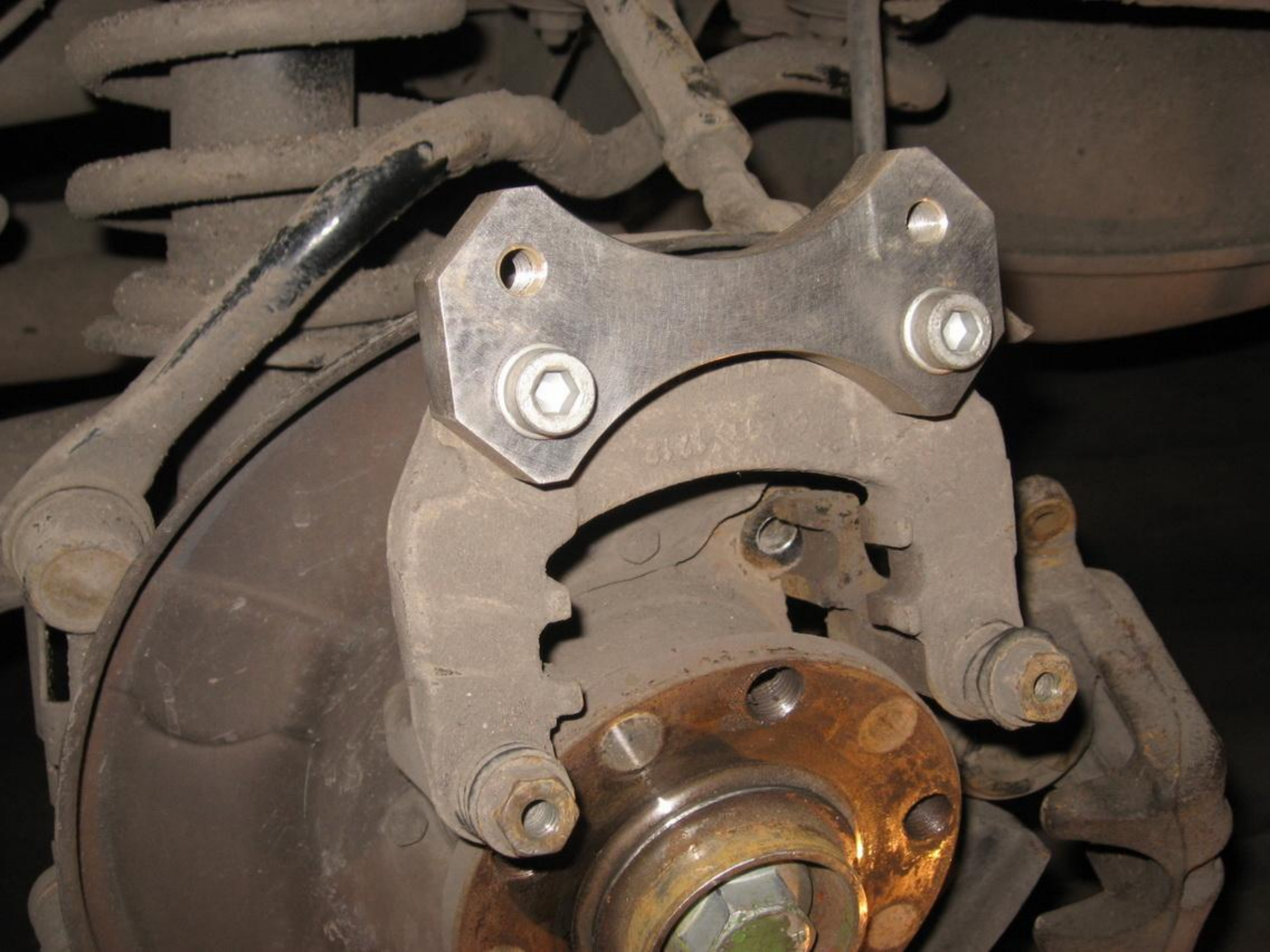


With the spacers had to use bolts longer than regular



Поделиться...

[Back]

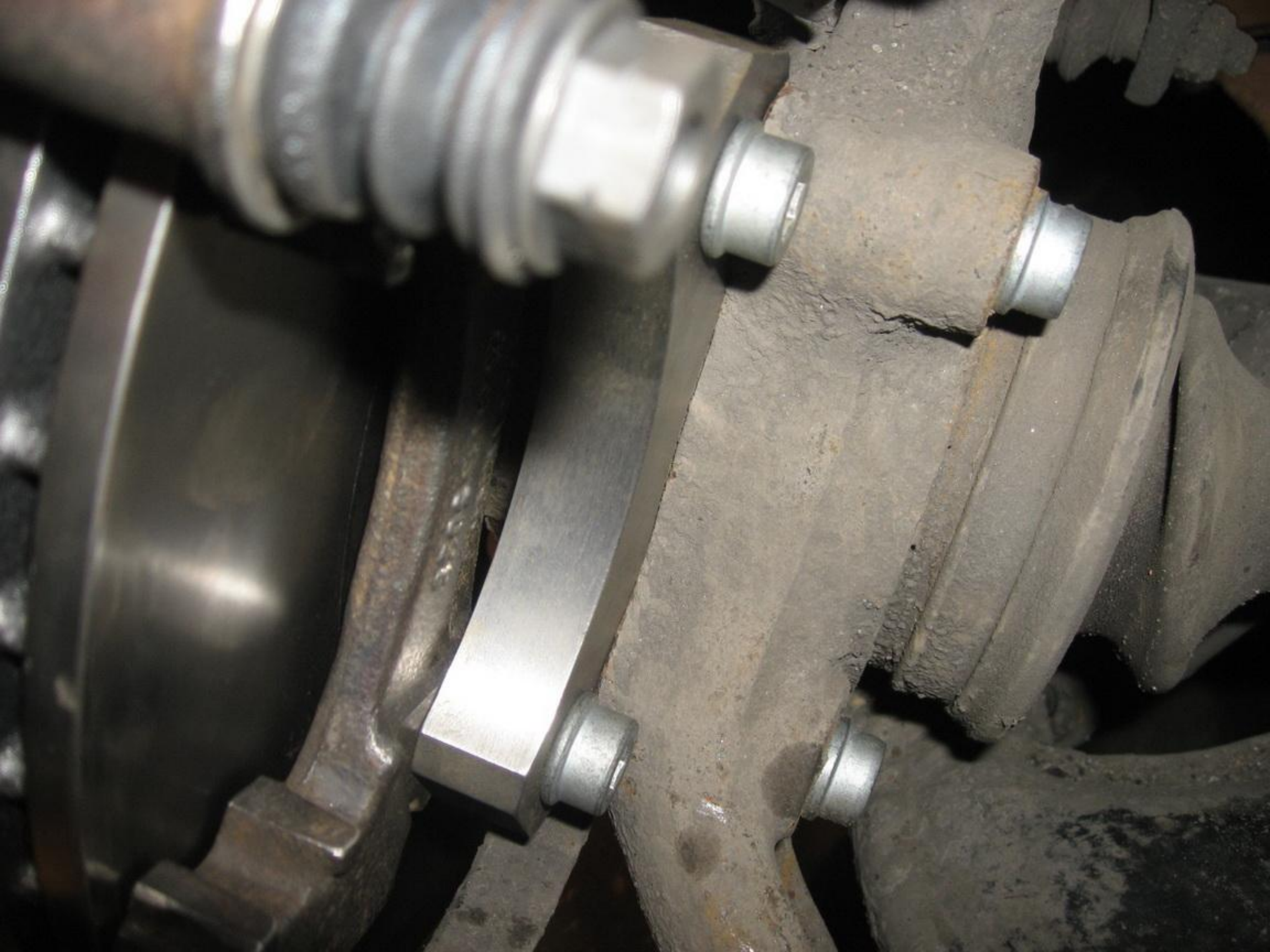






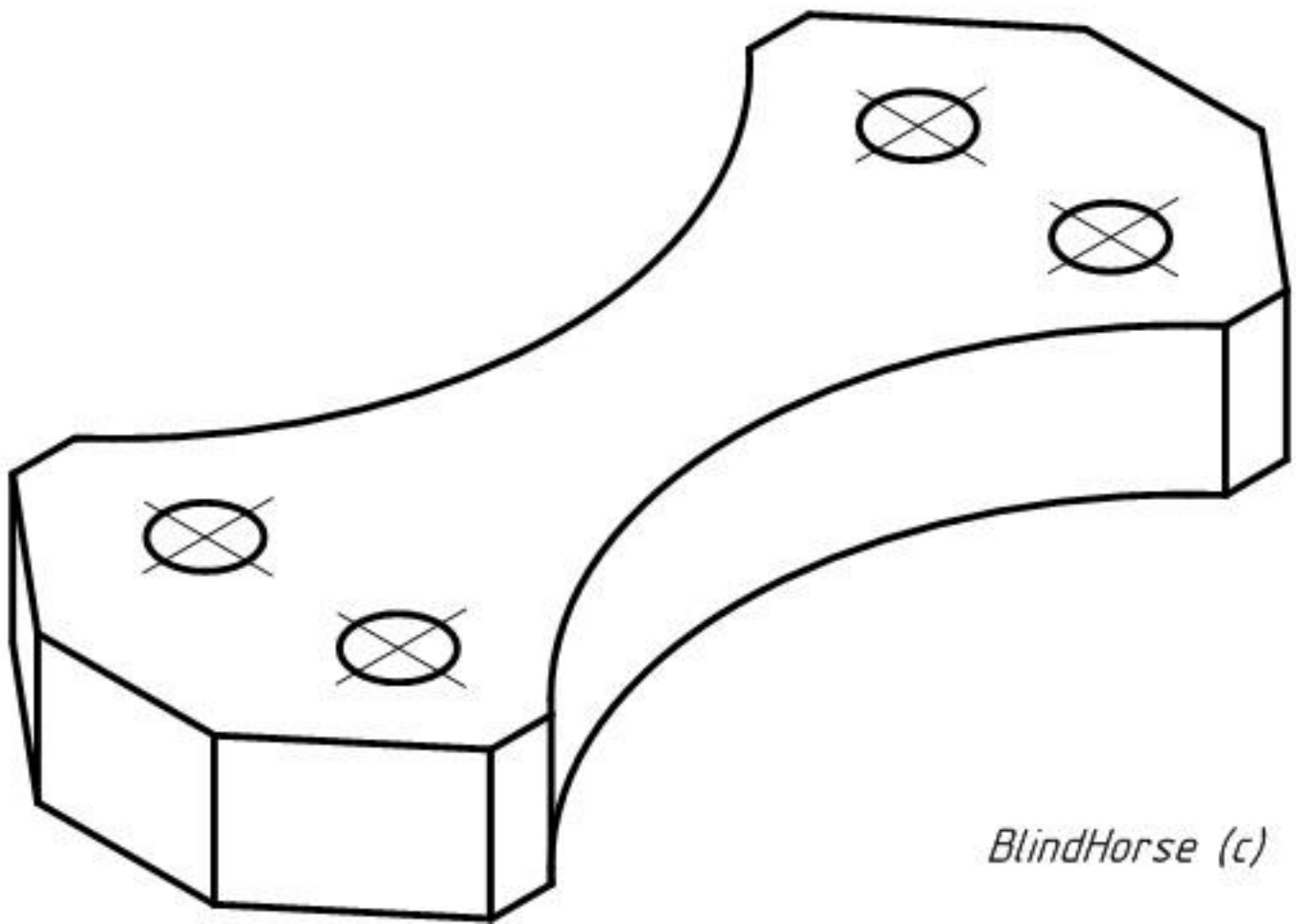
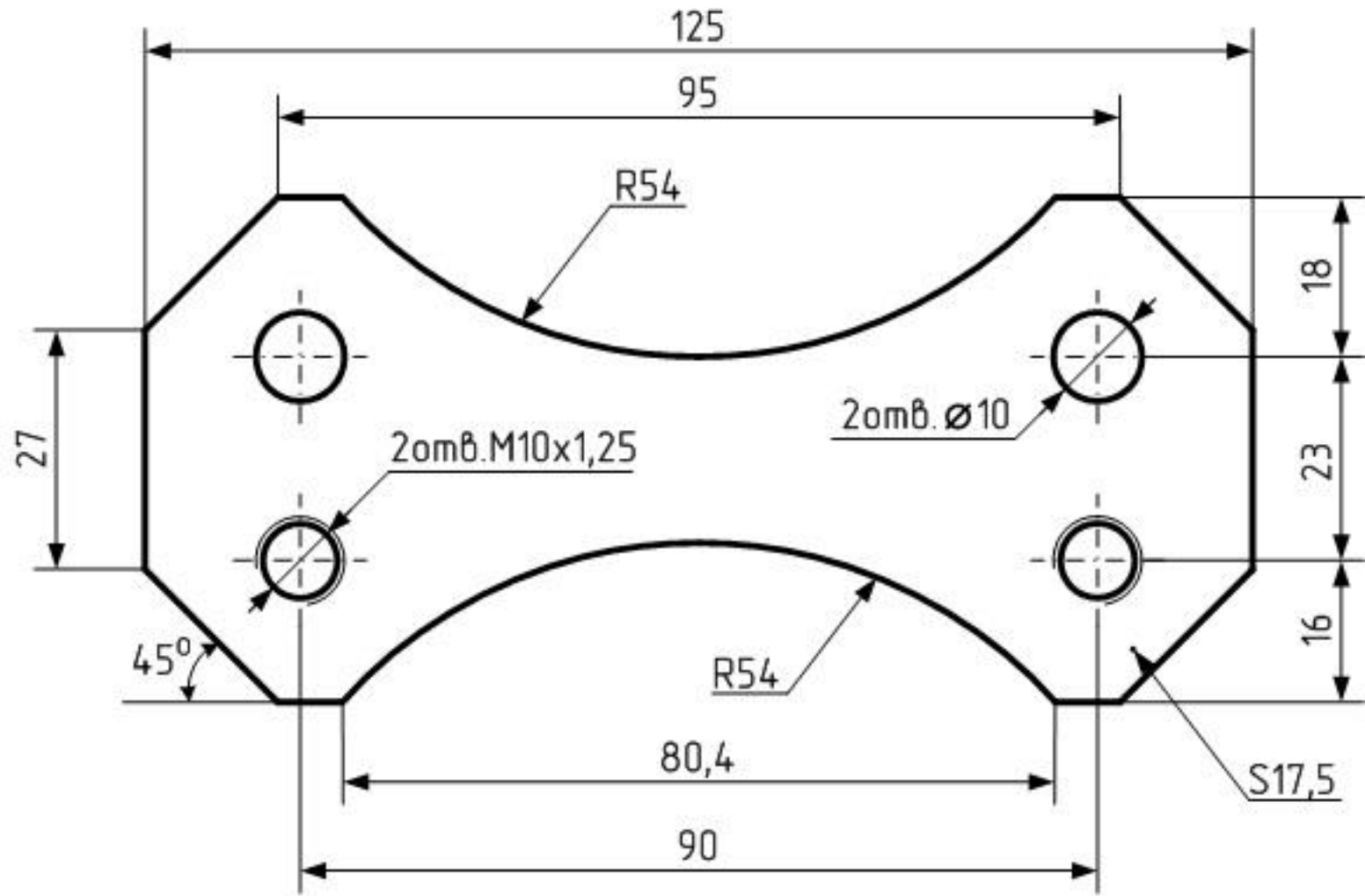










Материал Ст20
Количество 2шт.



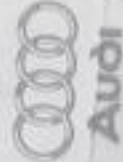

BlindHorse (c)





     Nutzfahrzeuge

Original Teile · Genuine Parts · Pièces d'Origine · Ricambi



N -910-587-02
ZYL.SCHRAU
10 Stück PP21.01.2010
Lot:RA-148 LS: 917725
Expire Date NONE
Made in Germany

Volkswagen AG, Vertrieb Original Teile, Postfach 1451, 34219 Baunatal



N 907-403-02