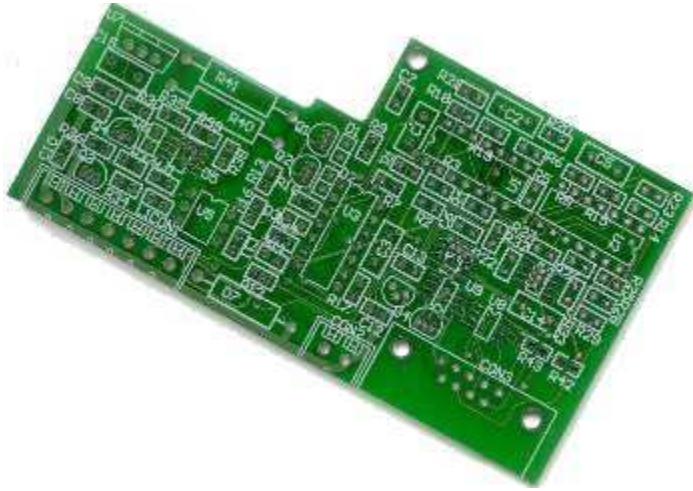


Australian DIY-WB

Click on the photo to see an enlarged JPEG of the PCB (45,128 bytes, 694 x 484)



General info

More information will be posted here as it becomes available.

- Excel [spreadsheet of components](#) (will be updated with feedback info.).
- GIF of the [schematic](#) from the Protel project file.
- GIF of a [location guide](#), use with the spreadsheet.

Note that U2's outline is incorrect, it should be oriented as for U1 (as in the location guide).

The 4 surface mount 8 pin packages also have TO-92 (3 pin transistor style) outlines except for U8 (ATTiny).

Obtaining a PCB

PCBs are available at AU\$20 plus postage and package each. Special of AU\$24 each posted anywhere in Australia (overnight express 500 g Australia Post) for cash/cheque (\$25 for card payment). Only a limited number are available. eMail me peter@techedge.com.au with your details. If you already put in an order and have not paid or are awaiting a sensor, then contact me if you want your PCB(s) now.

Obtaining a Kit of Parts

I'm finalising a kit of parts that will be available soon.

Obtaining an NTK Sensor

I hope to have sensors for this unit available at around AU\$300, but I am still finalising a price. Those few people who signed up early will be getting the units at cost.

Statistics by **209890** www.digits.com

Approx. unique hits since Aug 26 2001.

Last updated 26 August 2001 | [Tell me about broken links](#)

This document is copyright © 2001, Tech Edge Pty. Ltd.

[Previous](#) | [Home](#) | [Feedback](#) | [Copyright](#)

