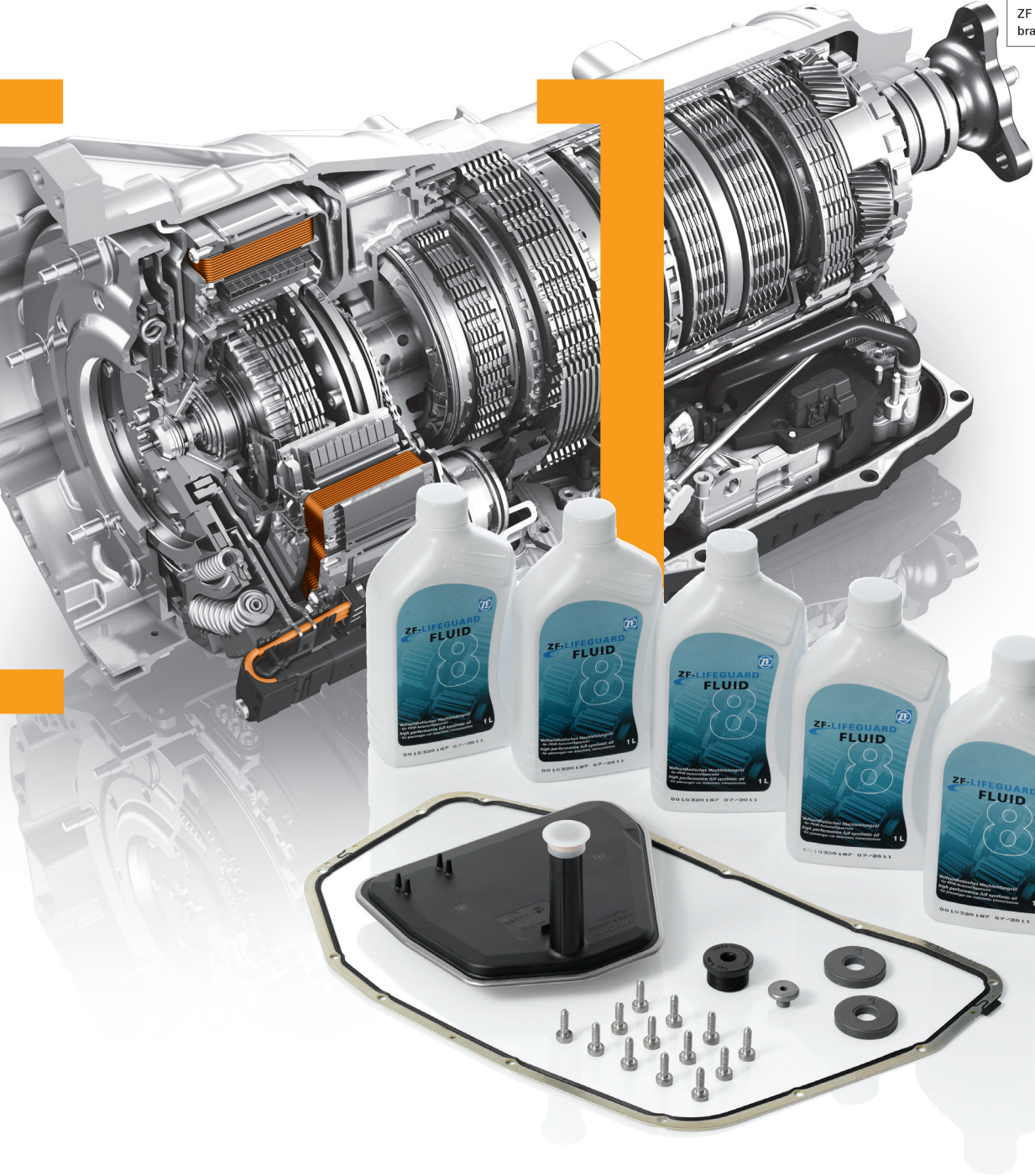




ZF Parts is a
brand of ZF



Genuine. Built to Last.

2015 Catalog

ZF Remanufactured Transmissions, Fluids
and Kits for Passenger Cars

ZF Parts

Built to Last.

Genuine ZF Remanufactured Transmissions.

ZF does not simply rebuild - by opening a transmission, fixing the broken part and reassembling. ZF Services, LLC remanufactures. During our process, transmissions are completely disassembled, cleaned and inspected. If any part fails to meet our OE exact specifications and standards, it is then replaced. The remanufactured products are then updated to the latest ZF engineering specifications and reassembled. Testing is then conducted according to the same protocol as new production transmissions to ensure "like-new" operation, reliability and durability.

1

Disassembly: ZF factory-trained technicians disassemble transmissions and dispose of all gaskets, seals, bands and other damaged or questionable parts.

2

Washing: All parts are degreased and cleaned in high pressure washers until they are dirt-free. All waste water is captured in our closed loop cleaning system and does not enter the environment.

3

Inspection: Parts from the washing cycle are inspected and measured to ensure they are within the proper tolerances. Parts that fail are discarded and replaced with new, Genuine ZF Parts.

4

Factory Updates: Every ZF reman transmission is updated to include all technical updates from the original manufacturing factory. This will increase the life and performance of the transmission and is not found in used or rebuilt units.

5

Final Assembly: Factory-trained technicians assemble the unit and sub assemblies with the utmost of care. All torque values are maintained and monitored by our ISO 9002 and TS 16949 approved processes.

6

Testing: Every reman transmission is dyno tested under dynamic loads with specific, model based shift programs.

Benefits

For the shop...

Satisfied Customers /// Reduced Troubleshooting and Installation Times /// **Quicker Bay Turns** /// Peace of Mind - Reduced Rework or Returns

For the customer...

Like-new Shift Performance and Comfort /// Longer Service Life /// **Greater reliability** /// Increased Vehicle Residual Value /// **2-year, Unlimited Mileage Warranty**



Every transmission has it's own identification number.

ZF Transmission ID Charts.

All ZF Transmissions are identified with a catalog number sometimes referred to as a spec or engineering number. All models including early production 6HP use a riveted plate, where late model 6HP's have a raised stamped pad. Catalog numbers provide precise information to help identify the correct parts. When ordering parts or requesting help always have the catalog number.

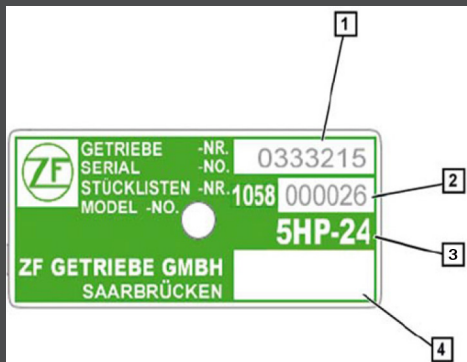
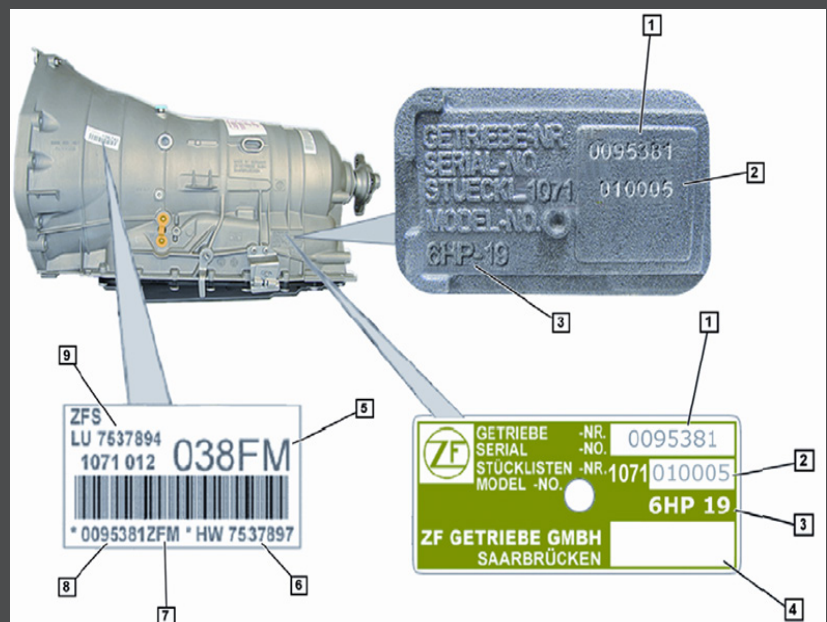


Figure 1: 4HP/5HP

1. Serial number
2. Catalog Number
3. Transmission Type
4. Customer Specific Information

Figure 2: 6HP/8HP

1. Serial number
2. Catalog Number
3. Transmission Type
4. Customer Specific Information
5. Transmission part number (1071 012 038) shown
6. OE control module hardware number
7. Letter code
8. Serial Number
9. OE Part number





ZF-LifeguardFluid-Maximum Performance for ZF Transmissions


The ZF LifeguardFluid products make up a range of heavy-duty oils intended exclusively for ZF's automatic car transmissions. ZF LifeguardFluid oils were developed specifically for ZF's automatic 5-speed, 6-speed, and 8-speed transmissions. Subjected to extreme testing, ZF LifeguardFluid guarantees maximum performance of the automatic transmission. As a result of the specifically matched oils, wear of heavily loaded components is minimized allowing a long service life for our remanufactured products.

- Specifically matched transmission fluids for exclusive use in ZF automatic transmission.
- Less material wear and softer shifting operations due to constant friction behavior.
- Less vibration due to the controlled slip of the converter lockup clutch.
- Maximum sound dampening due to low viscosity.
- Improved lubrication - film stability in all performance and temperature ranges.
- Improved economy thanks to maximum reduction of fuel consumption, which also reduces emissions.


ZF 6 & 8 Speed fluid reference

Application	Make	Fluid Type	
6HP26A61 (only for Audi A8)	Audi	LifeGuardFluid 8	
6HP19A	All	S671 090 312 - 1L bottle	
6HP19X (only for Audi Q7)	All	S671 090 311 - 20L can	
6HP28AF	All	S671 090 310 - 210L barrel	
8HP45	All		
8HP45X	All		
8HP55A	All		
8HP70	All		
8HP70X	All		
8HP90	All		
8HP90A	All		
9HP48	All		
Application	Make	Fluid Type	
6HP19	All	LifeGuardFluid 6	
6HP19X (exc. Audi Q7)	All	S671 090 255 - 1L bottle	
6HP21	BMW	S671 090 253 - 20L can	
6HP26	Jaguar	S671 090 252 - 210L barrel	
6HP26A61 (exc. Audi A8))	Audi		
	Land Rover		
	Bentley		
6HP26X	All		
6HP28	All		
6HP28X	All		
6HP32	All		
6HP32A	All		

ZF 5 Speed fluid reference

Application	Make	Type plate color	Fluid Type	
5HP18	All	Green	LifeGuardFluid 5	
5HP19	All		S671 090 170 - 1L bottle	
5HP19FL	All		S671 090 172 - 20L can	
5HP19FLA	All		S671 090 171 210 - 210L barrel	
5HP19FLA	All			
5HP24	All			
5HP24A	All			
5HP30	Aston Martin Bentley BMW Rolls Royce			
5HP18	All	Black	Dexron III	Pictured below
5HP18A	All			
5HP30	BMW	Black	Shell LA2634	

4 Speed fluid reference

Application	Make	Type plate color	Fluid Type	
4HP14	All	Black	Dexron III	
4HP18				
4HP18E				
4HP18FLA				
4HP18FLE				
4HP22				
4HP22A				
4HP22HL				
4HP24	All	Green	LifeGuardFluid 5	Pictured above
4HP24A				
4HP20				
Mini CVT applications with ZF number on type plate		ZF type plate number: 481978	ESSO EZL 799 (481 336), 5 liter bottle* 5 liters required for fluid service	



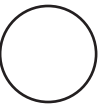
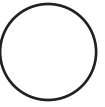
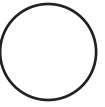
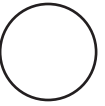
Scan to learn more about our oil change procedure videos or visit www.youtube.com/ZFservicesNA.

5HP Oil Change



6HP Oil Change

OE Quality for the Aftermarket with ZF Services, LLC



With ZF's hundred year anniversary in 2015, we are proud to say that ZF has continued to be the leader in driveline and chassis technology. As the strategic aftermarket business unit of ZF, ZF Services, LLC continues to bring system expertise by offering the highest quality, OE replacement parts to our customers. ZF's driveline and chassis technology is made available through ZF's well-established brands: SACHS for shocks and clutches, Lemförder for chassis components, ZF Lenksysteme for steering components and ZF Parts for remanufactured transmissions and spare parts.

ZF Services, LLC is also the authorized automotive aftermarket distributor for STABILUS gas-charged lift supports.

All of our brands are recognized for superior OE quality, reliability and performance with a commitment to provide parts that fit right the first time.

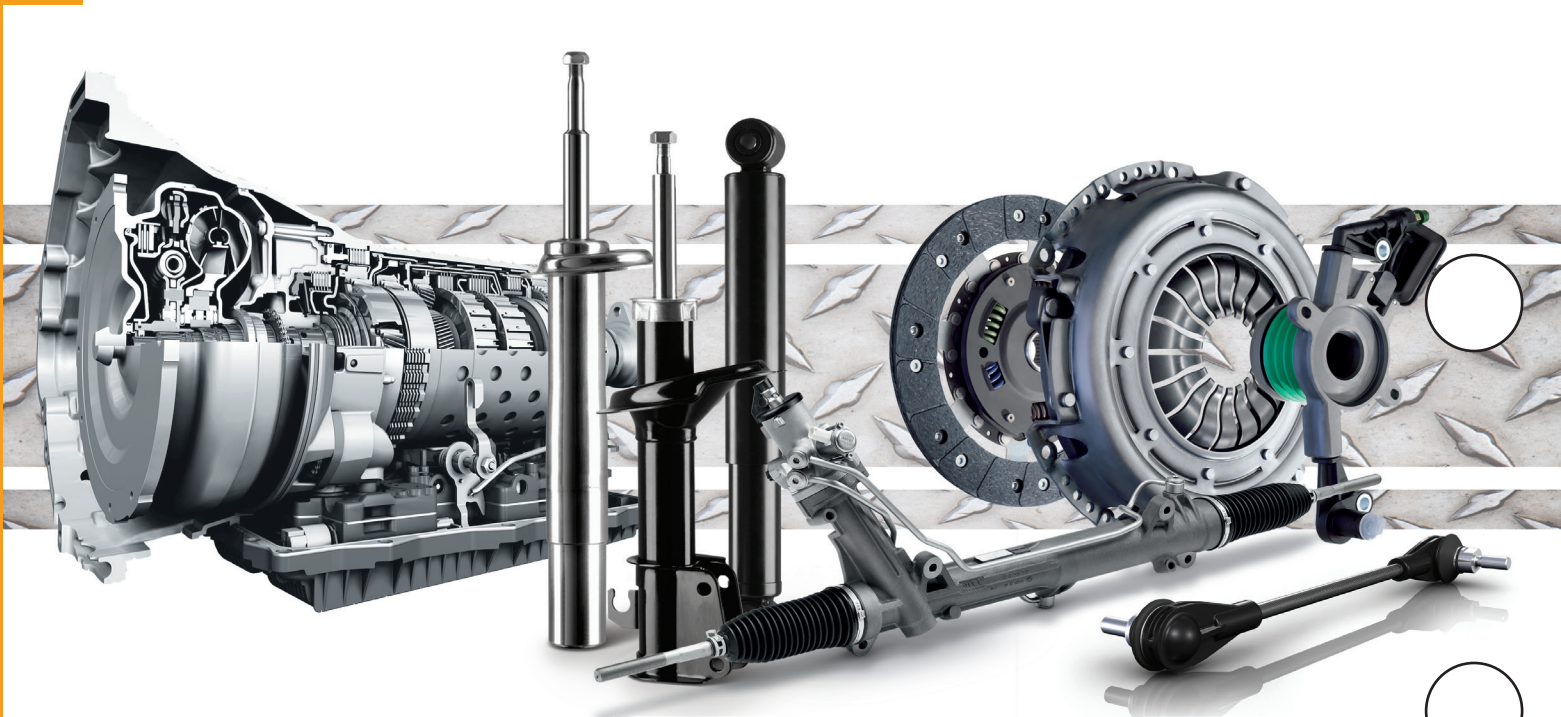


Table of Contents

Genuine ZF Remanufactured Transmissions	i	5HP-19	20
ZF Transmission ID Charts	ii	5HP-19FL	20
Transmission Oil Recommendations	iii	5HP-19FLA	20
OE Quality for the Aftermarket	v	5HP-19HL	21
Limited Warranty	vii	5HP-19HLA	21
		5HP-24	21
		5HP-24A	21
		5HP-30	22
Transmission Applications		6HP-19	22
Aston Martin	1	6HP-19A	22
Audi	1	6HP-19X	23
Bentley	6	6HP-21	23
BMW	6	6HP-21X	24
Jaguar	13	6HP-26	24
Land Rover	16	6HP-26A61	25
Porsche	17	6HP-26X	25
Rolls Royce	17	6HP-28	26
Volkswagen	17	6HP-28AF	26
		6HP-28X	26
ZF Kits and Spare Parts Reference Guide		8HP-45	27
4HP-18FLA	19	8HP-45HIS	27
4HP-18FLE	19	8HP-45X	27
4HP-22	19	8HP-45XHIS	27
4HP-22HL	19	8HP-55A	27
4HP-24	19	8HP-70	27
4HP-24A	19	8HP-70H	28
5HP-18	19	8HP-70X	28

Important Notice

The purpose of this catalog is to furnish ZF Services, LLC customers with as complete a listing of their parts requirements as possible.

All listings, applications, and interchanges have been compiled as carefully as possible with all available information however, ZF Services, LLC cannot assume any responsibility for possible errors in listings, applications, or interchanges.

All references by ZF Services, LLC to the original manufacturer trade names and part numbers are for identification purposes only.

Limited Warranty

Who is covered:

You are eligible for the benefits of this warranty if you are the original purchaser of a ZF remanufactured transmission, mechatronic valve body or torque converter or of Genuine ZF Parts.

What is covered and for how long:

ZF Services, LLC ("ZF") warrants its products to be free from defects in materials and workmanship under normal use and service as hereinafter provided.

Transmissions, mechatronic valve bodies, and torque converters remanufactured by ZF have a 24 month, unlimited mileage warranty. The warranty period begins on the date of installation. Shelf life for ZF Passenger Car reman components is 24 months and the maximum warranty coverage period is 48 months from delivery. This warranty is limited to replacing the remanufactured component or internal parts, which upon our inspection prove to be defective.

Genuine ZF Parts are covered under warranty for 24 months, unlimited mileage. Shelf life for Genuine ZF Parts is 6 months and the maximum warranty coverage period is 30 months from delivery. This warranty is limited to replacing the part(s), which upon our inspection, prove to be defective.

What is NOT covered:

This warranty for ZF products does not cover the following:

1. Removal, reinstallation or any other incidental cost to repair the vehicle
2. Abuse, incorrect installation, incorrect application, accident and conversions or modifications
3. Incorrect, low, or no oil
4. Improper maintenance
5. Cracked housing
6. Power enhancing computer chip, engine modifications, aftermarket turbo, etc.
7. Disassembled or incomplete units
8. Any labor costs or resulting expenses and/or any other consequential damages
9. Any unit that has been tampered with, opened or inspected without prior authorization from ZF

Any implied warranties, including warranties of merchantability and fitness for a particular purpose shall be limited in duration to the period of the time set forth above. ZF shall not be responsible for incidental or consequential damages and its liability shall be limited to the amount paid for the product. Some states do not allow limitations on how long an implied warranty lasts or the exclusion or limitation of incidental or consequential damages, so the above limitations or exclusion may not apply to you.

What ZF Services will do:

ZF's obligation under this warranty is limited to providing, at no charge, a replacement for any part of such product that fails within the terms of this warranty. ZF will not be responsible for the cost of labor related to the installation of the replacement part. ZF will replace any defective or worn-out product covered by this warranty. ZF will neither remove nor install, and will not pay for the removal, shipping or installation of any ZF product under this warranty.

What you must do:

In order to make a claim, prior to return a Return Goods Authorization (RGA) number must be issued through a ZF authorized distributor. No warranty claims or returns without prior authorization will be honored. Additional information or assistance regarding warranty claims may be obtained by writing to: ZF Services, LLC, 777 Hickory Hill Drive, Vernon Hills, IL 60061, ATTN: Technical Support Department.

This is the only express warranty applicable to products offered. ZF neither assumes nor authorizes anyone to assume for it any other express warranty. This warranty gives you specific legal rights, and you may also have other rights which vary state to state.

Spd.	Engine & Drive Type	Year	Description	Trans. Mfr. Code ¹	Trans. Code	OEM # / Reman. #	Trans. #	Programmed Trans. #	Replacement Mechatronic	Torque Converter #
------	---------------------	------	-------------	-------------------------------	-------------	------------------	----------	---------------------	-------------------------	--------------------

ASTON MARTIN**DB7**

5	6.0L 5935cc RWD	04-00	All Vantage & Vantage Volante	5HP30	-	42-120296-AC	1055 000 046 *	-	-	4168 028 213
						42-120296-AA	1055 000 039	-	-	4168 028 213

AUDI**100**

4	2.8L 2771cc FWD	94-92	All	4HP18FLE	CDT	01K 300 041 X	1050 012 002 *	-	-	4168 026 239
---	--------------------	-------	-----	----------	-----	---------------	----------------	---	---	--------------

100 QUATTRO

4	2.8L 2771cc AWD	94-92	All	4HP18FLA	CNT	01F 300 041 SX	1050 020 030 *	-	-	4168 026 239
					CEZ	01F 300 041 LX	1050 020 023	-	-	4168 026 239

A4

5	1.8L 1781cc FWD	06-04	All	5HP19FL	EZS	01V 300 048 GX	1060 030 072 *	-	-	4168 025 069
					EFP	01V 300 043 QX	1060 030 049	-	-	4168 025 069
					DDT	01V 300 041 QX	1060 030 013	-	-	4168 025 069
	2.8L 2771cc FWD	04-96	All DOHC	5HP19FL	DRD	01V 300 042 TX	1060 030 021 *	-	-	4168 025 063
			All SOHC	5HP19FL	DCS	01V 300 041 NX	1060 030 005 *	-	-	4168 025 127

A4 QUATTRO

5	1.8L 1781cc AWD	06-96	All	5HP19FLA	GBF	01V 300 052 QX	1060 040 101 *	-	-	4168 025 069				
					FEP	01V 300 045 QX	1060 040 073	-	-	4168 025 069				
					FAL	01V 300 049 FX	1060 040 054	-	-	4168 025 069				
					EFQ	01V 300 044 GX	1060 040 030	-	-	4168 025 069				
					DTV	01V 300 043 HX	1060 040 018	-	-	4168 025 069				
					2.8L 2771cc AWD	01-96	All DOHC	5HP19FLA	DRN	01V 300 043 AX	1060 040 012 *	-	-	4168 025 063
							All SOHC	5HP19FLA	CJP	01V 300 041 GX	1060 040 002 *	-	-	4168 025 127
3.0L 2976cc AWD	06-96	All	5HP19FLA	GBJ	01V 300 052 TX	1060 040 103 *	-	-	4168 025 333					
				FEQ	01V 300 045 TX	1060 040 087	-	-	4168 025 333					
6	2.0L 1984cc AWD	10-09	All Sedan	6HP28AF	-	0B6 300 036 E 001	1084 030 022	1084 032 051 *	1084 198 990	4168 025 571				
						0B6 300 036 E 001	1084 030 022	1084 032 032	1084 198 990	4168 025 571				
						0B6 300 036 E 001	1084 030 013	1084 032 043	1084 198 989	4168 025 571				
						0B6 300 036 E 001	1084 030 013	1084 032 038	1084 198 989	4168 025 571				
						0B6 300 036 E 001	1084 030 013	1084 032 037	1084 198 989	4168 025 571				
						0B6 300 036 E 001	1084 030 013	1084 032 013	1084 198 989	4168 025 571				
						08-05	All Wagon	6HP19A	-	09L 300 039 MX	1071 040 052	1071 042 390 *	1071 198 321	4168 025 578
										09L 300 038 MX	1071 040 052	1071 042 338	1071 198 873	4168 025 578
										09L 300 038 MX	1071 040 052	1071 042 262	1071 198 873	4168 025 578
										09L 300 038 MX	1071 040 052	1071 042 172	1071 198 873	4168 025 578
		09L 300 039 TX	1071 040 033	1071 042 339	1071 198 321					4168 025 578				
		09L 300 037 KX	1071 040 033	1071 042 212	1071 198 321					4168 025 578				
		All Sedan	6HP19A	-	09L 300 038 MX	1071 040 052	1071 042 390 *	1071 198 873	4168 025 578					
					09L 300 038 MX	1071 040 052	1071 042 338	1071 198 873	4168 025 578					
					09L 300 040 BX	1071 040 052	1071 042 306	1071 198 873	4168 025 578					
					09L 300 038 MX	1071 040 052	1071 042 262	1071 198 873	4168 025 578					
					09L 300 038 MX	1071 040 052	1071 042 172	1071 198 873	4168 025 578					
					09L 300 039 TX	1071 040 033	1071 042 339	1071 198 321	4168 025 578					
					09L 300 037 KX	1071 040 033	1071 042 212	1071 198 321	4168 025 578					
					09L 300 037 X	1071 040 027	1071 042 054	1071 198 948	4168 025 578					

* Most current transmission model available

¹ Use Trans. Mfr. Code to find ZF's Transmission Oil recommendations on page iii.

Spd.	Engine & Drive Type	Year	Description	Trans. Mfr. Code ¹	Trans. Code	OEM # / Reman. #	Trans. #	Programmed Trans. #	Replacement Mechatronic	Torque Converter #
------	---------------------	------	-------------	-------------------------------	-------------	------------------	----------	---------------------	-------------------------	--------------------

AUDI**A4 QUATTRO (Continued)**

6	3.2L 3123cc AWD	2009	All Sedan	6HP28AF	-	0B6 300 036 B	1084 030 019	1084 032 053 *	1084 198 996	4168 025 563
						0B6 300 036 B	1084 030 019	1084 032 048	1084 198 996	4168 025 563
						0B6 300 036 B	1084 030 018	1084 032 022	1084 198 997	4168 025 563
						0B6 300 036 B	1084 030 016	1084 032 040	1084 198 999	4168 025 563
						0B6 300 036 B	1084 030 016	1084 032 036	1084 198 999	4168 025 563
						0B6 300 036 B	1084 030 016	1084 032 027	1084 198 999	4168 025 563
						0B6 300 036 B	1084 030 016	1084 032 017	1084 198 999	4168 025 563
						0B6 300 036 B	1084 030 014	1084 032 018	1084 198 304	4168 025 563
		09-07	All Convertible	6HP19A	-	09L 300 040 MX	1071 040 065	1071 042 282 *	1071 198 882	4168 025 575
						09L 300 040 MX	1071 040 065	1071 042 175	1071 198 882	4168 025 575
		08-05	All	6HP19A	-	09L 300 040 MX	1071 040 065	1071 042 282 *	1071 198 882	4168 025 575
						09L 300 040 MX	1071 040 065	1071 042 175	1071 198 882	4168 025 575
						09L 300 040 MX	1071 040 035	1071 042 211	1071 198 878	4168 025 575
						09L 300 037 AX	1071 040 028	1071 042 215	1071 198 885	4168 025 575
8	2.0L 1984cc AWD	14-11	All Turbo	8HP55A	-	0BK 300 037 E	1087 030 019	1087 032 047 *	1087 198 995	1087 298 037
						0BK 300 037 K	1087 030 021	1087 032 039	1087 198 990	1087 298 037

A6

4	2.8L 2771cc FWD	97-95	All	4HP18FLE	CJE	01K 300 041 LX	1050 012 014 *	-	-	4168 026 239
5	2.8L 2771cc FWD	01-00	All DOHC	5HP19FL	EZZ	01V 300 048 PX	1060 030 088 *	-	-	4168 025 046
		01-98	All SOHC	5HP19FL	DPS	01V 300 042 PX	1060 030 027 *	-	-	4168 025 063
		99-98	All DOHC	5HP19FL	EKC	01V 300 046 EX	1060 030 059 *	-	-	4168 025 046

A6 QUATTRO

4	2.8L 2771cc AWD	98-95	All	4HP18FLA	CJD	01F 300 042 X	1050 020 036 *	-	-	4168 026 239		
5	2.7L 2671cc AWD	04-00	All	5HP19FLA	FAQ	01V 300 049 KX	1060 040 063 *	-	-	4168 025 333		
					EMP	01V 300 049 KX	1060 040 063 *	-	-	4168 025 333		
						01V 300 046 TX	1060 040 044	-	-	4168 025 333		
	2.8L 2771cc AWD	01-00	All w/ Trans Type Plate # 1060 040 065	5HP19FLA	FAS	01V 300 049 MX	1060 040 065 *	-	-	4168 025 046		
					01-98	All w/ Trans Type Plate # 1060 040 013	DPT	01V 300 042 QX	1060 040 013 *	-	-	4168 025 063
							EKX	01V 300 046 KX	1060 040 036 *	-	-	4168 025 063
							EKD	01V 300 046 HX	1060 040 035 *	-	-	4168 025 046
3.0L 2976cc AWD	04-02	All	5HP19FLA	FEJ	01V 300 050 KX	1060 040 075 *	-	-	4168 025 333			
4.2L 4172cc AWD	04-98	All	5HP24A	FUL	01L 300 043 AX	1058 020 031 *	-	-	4168 026 394			
				FBC	01L 300 042 KX	1058 020 018	-	-	4168 026 394			
				ECF	01L 300 041 MX	1058 020 015	-	-	4168 026 394			
6	3.0L 2995cc AWD	11-09	All	6HP19A	-	09L 300 042 H	1071 040 102	1071 042 442 *	1071 198 915	4168 025 573		
						09L 300 042 H	1071 040 102	1071 042 433	1071 198 915	4168 025 573		
						09L 300 038 D	1071 040 102	1071 042 423	1071 198 915	4168 025 573		
						09L 300 038 D	1071 040 102	1071 042 408	1071 198 915	4168 025 573		
						09L 300 038 DX	1071 040 102	1071 042 351	1071 198 915	4168 025 573		

* Most current transmission model available

¹ Use Trans. Mfr. Code to find ZF's Transmission Oil recommendations on page iii.

Spd.	Engine & Drive Type	Year	Description	Trans. Mfr. Code ¹	Trans. Code	OEM # / Reman. #	Trans. #	Programmed Trans. #	Replacement Mechatronic	Torque Converter #
------	---------------------	------	-------------	-------------------------------	-------------	------------------	----------	---------------------	-------------------------	--------------------

AUDI**A6 QUATTRO (Continued)**

6	3.2L 3123cc AWD	08-06	All Wagon	6HP19A	-	09L 300 041 CX	1071 040 090	1071 042 381 *	1071 198 951	4168 025 575
						09L 300 040 EX	1071 040 090	1071 042 349	1071 198 887	4168 025 575
						09L 300 041 CX	1071 040 090	1071 042 329	1071 198 951	4168 025 575
						09L 300 040 EX	1071 040 090	1071 042 250	1071 198 951	4168 025 575
						09L 300 040 EX	1071 040 090	1071 042 246	1071 198 951	4168 025 575
						09L 300 039 AX	1071 040 072	1071 042 260	1071 198 929	4168 025 575
						09L 300 039 AX	1071 040 072	1071 042 182	1071 198 929	4168 025 575
						09L 300 040 AX	1071 040 050	1071 042 231	1071 198 942	4168 025 575
						09L 300 038 KX	1071 040 050	1071 042 221	1071 198 942	4168 025 575
						09L 300 037 EX	1071 040 032	1071 042 144	1071 198 883	4168 025 575
	4.2L 4163cc AWD	11-05	All	6HP19A	-	09L 300 041 CX	1071 040 090	1071 042 381 *	1071 198 951	4168 025 575
						09L 300 040 EX	1071 040 090	1071 042 349	1071 198 887	4168 025 575
						09L 300 041 CX	1071 040 090	1071 042 329	1071 198 951	4168 025 575
						09L 300 040 EX	1071 040 090	1071 042 250	1071 198 951	4168 025 575
						09L 300 040 EX	1071 040 090	1071 042 246	1071 198 951	4168 025 575
						09L 300 039 AX	1071 040 072	1071 042 260	1071 198 929	4168 025 575
						09L 300 039 AX	1071 040 072	1071 042 182	1071 198 929	4168 025 575
						09L 300 040 AX	1071 040 050	1071 042 231	1071 198 942	4168 025 575
						09L 300 038 KX	1071 040 050	1071 042 221	1071 198 942	4168 025 575
						09L 300 036 PX	1071 040 021	1071 042 105	1071 198 886	4168 025 575
09L 300 036 PX	1071 040 021	1071 042 098	1071 198 886	4168 025 575						
09L 300 036 PX	1071 040 021	1071 042 083	1071 198 886	4168 025 575						
09L 300 038 AX	1071 040 021	1071 042 079	1071 198 886	4168 025 575						
4.2L 4163cc AWD	11-05	All	6HP19A	-	09L 300 042 J	1071 040 101	1071 042 434 *	1071 198 887	4168 025 576	
					09L 300 041 K	1071 040 101	1071 042 412	1071 198 887	4168 025 576	
					09L 300 041 KX	1071 040 101	1071 042 355	1071 198 887	4168 025 576	
					09L 300 041 DX	1071 040 087	1071 042 383	1071 198 955	4168 025 576	
					09L 300 040 FX	1071 040 087	1071 042 324	1071 198 955	4168 025 576	
					09L 300 040 FX	1071 040 087	1071 042 277	1071 198 955	4168 025 576	
					09L 300 039 BX	1071 040 073	1071 042 183	1071 198 921	4168 025 576	
					09L 300 038 LX	1071 040 051	1071 042 222	1071 198 961	4168 025 576	
					09L 300 036 AX	1071 040 013	1071 042 100	1071 198 891	4168 025 576	
					09L 300 038 BX	1071 040 013	1071 042 080	1071 198 891	4168 025 576	

A8

5	3.7L 3697cc FWD	99-97	All	5HP19FL	CJZ	01V 300 041 FX	1060 030 006 *	-	-	4168 025 043
---	--------------------	-------	-----	---------	-----	----------------	-----------------------	---	---	--------------

A8 QUATTRO

4	4.2L 4172cc AWD	94-92	All	4HP24A	CML	018 300 035 HX	1043 040 026 *	-	-	4168 028 195
5	4.2L 4172cc AWD	03-97	All w/ Trans Type Plate # 1058 020 033	5HP24A	FUN	01L 300 043 CX	1058 020 033 *	-	-	4168 026 394
			All w/ Trans Type Plate # 1058 020 007	5HP24A	DSM	01L 300 041 DX	1058 020 007 *	-	-	4168 026 394
			All w/ Trans Type Plate # 1058 020 009	5HP24A	DTE	01L 300 041 GX	1058 020 009 *	-	-	4168 026 394
			All w/ Trans Type Plate # 1058 020 014	5HP24A	EDG	01L 300 042 AX	1058 020 014 *	-	-	4168 026 394
			All w/ Trans Type Plate # 1058 020 021	5HP24A	FBF	01L 300 042 NX	1058 020 021 *	-	-	4168 026 394

* Most current transmission model available

¹ Use Trans. Mfr. Code to find ZF's Transmission Oil recommendations on page iii.

Spd.	Engine & Drive Type	Year	Description	Trans. Mfr. Code ¹	Trans. Code	OEM # / Reman. #	Trans. #	Programmed Trans. #	Replacement Mechatronic	Torque Converter #
------	---------------------	------	-------------	-------------------------------	-------------	------------------	----------	---------------------	-------------------------	--------------------

AUDI**A8 QUATTRO (Continued)**

5	4.2L 4172cc AWD	03-97	All w/ Trans Type Plate # 1058 000 004	5HP24A	DPZ	01L 300 041 BX	1058 020 004 *	-	-	4168 026 394
6	4.2L 4163cc AWD	10-07	All w/ 09L Trans Mfr Code	6HP19A	-	09L 300 042 G	1071 040 111	1071 042 422 *	1071 198 949	4168 025 576
						09L 300 042 AX	1071 040 111	1071 042 396	1071 198 949	4168 025 576
						09L 300 042 AX	1071 040 084	1071 042 325	1071 198 916	4168 025 576
						09L 300 042 AX	1071 040 084	1071 042 283	1071 198 916	4168 025 576
						09L 300 042 AX	1071 040 084	1071 042 227	1071 198 916	4168 025 576
	4.2L 4172cc AWD	06-04	All w/ 09E Trans Mfr Code	6HP26A61	-	09E 300 036 SX	1068 030 040	1068 032 151 *	1068 198 951	4168 026 620
						09E 300 036 SX	1068 030 040	1068 032 141	1068 198 951	4168 026 620
						09E 300 035 PX	1068 030 031	1068 032 059	1068 198 953	4168 026 620
						09E 300 036 LX	1068 030 027	1068 032 093	1068 198 901	4168 026 620
						09E 300 035 PX	1068 030 014	1068 032 053	1068 198 330	4168 026 620
	6.0L 5998cc AWD	09-05	All	6HP26A61	-	09E 300 040 D	1068 030 083	1068 032 219 *	1068 198 849	4168 028 644
						09E 300 038 SX	1068 030 068	1068 032 150	1068 198 849	4168 028 644
						09E 300 038 KX	1068 030 061	1068 032 179	1068 198 850	4168 028 644
						09E 300 038 AX	1068 030 061	1068 032 171	1068 198 850	4168 028 644
						09E 300 038 AX	1068 030 061	1068 032 130	1068 198 850	4168 028 644
						09E 300 036 QX	1068 030 044	1068 032 172	1068 198 850	4168 028 644
						09E 300 036 X	1068 030 036	1068 032 106	1068 198 847	4168 028 644
09E 300 036 X						1068 030 036	1068 032 094	1068 198 847	4168 028 644	
09E 300 036 X	1068 030 036	1068 032 081	1068 198 847	4168 028 644						
8	4.2L 4163cc AWD	12-11	All	8HP55A	-	0BK 300 037	1087 030 014	1087 032 043 *	1087 198 998	1087 298 018
	6.3L 6229cc AWD	14-12	All	8HP55A	-	0BK 300 037 A	1087 030 015	1087 032 045 *	1087 198 998	1087 298 028

ALLROAD QUATTRO

5	2.7L 2671cc AWD	05-01	All	5HP19FLA	EYK	01V 300 050 AX	1060 040 053 *	-	-	4168 025 333
	4.2L 4172cc AWD	05-01	All	5HP19FLA	FXL	01V 300 052 NX	1060 040 093 *	-	-	4168 025 336

Q5

6	3.2L 3123cc AWD	12-09	All	6HP28AF	-	0B6 300 036 F001	1084 030 023	1084 032 054 *	1084 198 986	4168 025 563
						0B6 300 036 F001	1084 030 023	1084 032 049	1084 198 986	4168 025 563
						0B6 300 036 F001	1084 030 023	1084 032 033	1084 198 986	4168 025 563
						0B6 300 035 G	1084 030 007	1084 032 042	1084 198 998	4168 025 563
						0B3 300 035 GX	1084 030 007	1084 032 005	1084 198 998	4168 025 563
8	2.0L 1984cc AWD	14-11	All Turbo	8HP55A	-	0BK 300 038 E	1087 030 040	1087 032 075 *	1087 198 977	1087 298 037
						0BK 300 038 G	1087 030 030	1087 032 053	1087 198 976	1087 298 037
						0BK 300 037 N	1087 030 023	1087 032 040	1087 198 995	1087 298 037
						0BK 300 037 D	1087 030 018	1087 032 048	1087 198 995	1087 298 037

Q7

6	3.6L 3597cc AWD	10-07	All	6HP19X	-	0AT 300 035 FX	1071 020 009	1071 022 028 *	1071 198 898	4168 025 577
						0AT 300 035 EX	1071 020 009	1071 022 027	1071 198 898	4168 025 577
						0AT 300 035 EX	1071 020 009	1071 022 026	1071 198 898	4168 025 577
						0AT 300 035 CX	1071 020 008	1071 022 025	1071 198 318	4168 025 577
						0AT 300 035 BX	1071 020 008	1071 022 024	1071 198 318	4168 025 577
						0AT 300 035 CX	1071 020 008	1071 022 022	1071 198 318	4168 025 577
						0AT 300 035 AX	1071 020 008	1071 022 021	1071 198 318	4168 025 577
						0AT 300 035 AX	1071 020 008	1071 022 020	1071 198 318	4168 025 577

* Most current transmission model available

¹ Use Trans. Mfr. Code to find ZF's Transmission Oil recommendations on page iii.

Spd.	Engine & Drive Type	Year	Description	Trans. Mfr. Code ¹	Trans. Code	OEM # / Reman. #	Trans. #	Programmed Trans. #	Replacement Mechatronic	Torque Converter #
------	---------------------	------	-------------	-------------------------------	-------------	------------------	----------	---------------------	-------------------------	--------------------

AUDI**RS6**

5	4.2L 4172cc AWD	2003	All	5HP24A	GAG	01L 300 043 EX	1058 020 035 *	-	-	4168 028 598
---	--------------------	------	-----	--------	-----	----------------	-----------------------	---	---	--------------

S4

5	2.7L 2671cc AWD	02-00	All	5HP19FLA	EMP	01V 300 049 KX	1060 040 063 *	-	-	4168 025 333
						01V 300 046 TX	1060 040 044	-	-	4168 025 333
6	4.2L 4163cc AWD	09-07	(B7) All Convertible	6HP19A	-	09L 300 040 SX	1071 040 066	1071 042 301 *	1071 198 923	4168 025 576
						09L 300 040 SX	1071 040 066	1071 042 176	1071 198 923	4168 025 576
						09L 300 038 RX	1071 040 067	1071 042 177	1071 198 926	4168 025 576
		08-05	(B7) All Sedan	6HP19A	-	09L 300 040 SX	1071 040 066	1071 042 301 *	1071 198 923	4168 025 576
						09L 300 040 SX	1071 040 066	1071 042 176	1071 198 923	4168 025 576
						09L 300 037 NX	1071 040 040	1071 042 213	1071 198 917	4168 025 576
						09L 300 038 X	1071 040 009	1071 042 156	1071 198 304	4168 025 576
						09L 300 037 BX	1071 040 009	1071 042 077	1071 198 304	4168 025 576
						09L 300 040 SX	1071 040 066	1071 042 301 *	1071 198 923	4168 025 576
		06-04	(B6) All Convertible	6HP19A	-	09L 300 040 SX	1071 040 066	1071 042 176	1071 198 923	4168 025 576
						09L 300 040 SX	1071 040 066	1071 042 176	1071 198 923	4168 025 576
						09L 300 037 NX	1071 040 040	1071 042 213	1071 198 917	4168 025 576
						09L 300 037 BX	1071 040 009	1071 042 077	1071 198 304	4168 025 576
05-04	(B6) All Sedan & Wagon	6HP19A	-	09L 300 035 TX	1071 040 009	1071 042 038 *	1071 198 304	4168 025 576		
				09L 300 037 BX	1071 040 009	1071 042 099	1071 198 304	4168 025 576		
							1071 042 038 *	1071 198 304	4168 025 576	

S5

6	4.2L 4163cc AWD	12-08	All Coupe	6HP28AF	-	0B6 300 036 C	1084 030 020	1084 032 055 *	1084 198 987	4168 025 570
						0B6 300 036 C	1084 030 020	1084 032 050	1084 198 987	4168 025 570
						0B6 300 035 N	1084 030 015	1084 032 041	1084 198 988	4168 025 570
						0B6 300 036 A	1084 030 015	1084 032 034	1084 198 988	4168 025 570
						0B6 300 035 N	1084 030 015	1084 032 026	1084 198 988	4168 025 570
						0B6 300 036 A	1084 030 015	1084 032 016	1084 198 988	4168 025 570

S6

5	4.2L 4172cc AWD	03-02	All	5HP24A	FBD	01L 300 042 LX	1058 020 029 *	-	-	4168 026 395
6	5.2L 5204cc AWD	11-07	All	6HP26A61	-	09E 300 040 E	1068 030 079	1068 032 238 *	1068 198 856	4168 028 648
						09E 300 039 H	1068 030 079	1068 032 225	1068 198 856	4168 028 648
						09E 300 039 CX	1068 030 077	1068 032 203	1068 198 857	4168 028 648
						09E 300 038 EX	1068 030 074	1068 032 206	1068 198 857	4168 028 648
						09E 300 038 GX	1068 030 064	1068 032 198	1068 198 401	4168 028 648
						09E 300 038 GX	1068 030 064	1068 032 189	1068 198 401	4168 028 648
						09E 300 038 GX	1068 030 059	1068 032 180	1068 198 858	4168 028 648
						09E 300 038 GX	1068 030 059	1068 032 163	1068 198 858	4168 028 648
						09E 300 038 BX	1068 030 059	1068 032 147	1068 198 858	4168 028 648
						09E 300 038 BX	1068 030 059	1068 032 128	1068 198 858	4168 028 648

S8

5	4.2L 4172cc AWD	03-01	All	5HP24A	FBG	01L 300 042 PX	1058 020 030 *	-	-	4168 026 395
---	--------------------	-------	-----	--------	-----	----------------	-----------------------	---	---	--------------

* Most current transmission model available

¹ Use Trans. Mfr. Code to find ZF's Transmission Oil recommendations on page iii.

Spd.	Engine & Drive Type	Year	Description	Trans. Mfr. Code ¹	Trans. Code	OEM # / Reman. #	Trans. #	Programmed Trans. #	Replacement Mechatronic	Torque Converter #
------	---------------------	------	-------------	-------------------------------	-------------	------------------	----------	---------------------	-------------------------	--------------------

AUDI

S8 (Continued)										
6	5.2L 5204cc AWD	09-07	All	6HP26A61	-	09E 300 039 P	1068 030 081	1068 032 233 *	1068 198 859	4168 028 648
						09E 300 039 P	1068 030 081	1068 032 217	1068 198 859	4168 028 648
						09E 300 039 GX	1068 030 075	1068 032 209	1068 198 859	4168 028 648
						09E 300 039 GX	1068 030 075	1068 032 202	1068 198 859	4168 028 648
						09E 300 038 FX	1068 030 070	1068 032 190	1068 198 891	4168 028 648
						09E 300 038 FX	1068 030 070	1068 032 183	1068 198 891	4168 028 648
						09E 300 037 BX	1068 030 058	1068 032 127	1068 198 891	4168 028 648

V8 QUATTRO										
4	3.6L 3562cc AWD	91-90	All	4HP24A	AYU	018 300 027 FX	1043 040 022 *	-	-	4168 026 137
					ATU	018 300 027 AX	1043 040 020	-	-	4168 028 120
	4.2L 4172cc AWD	94-92	All	4HP24A	AZG	018 300 027 GX	1043 040 025 *	-	-	4168 028 157

BENTLEY

ARNAGE										
5	6.8L 6748cc RWD	01-99	All	5HP30	-	PL20318PA	1055 000 028 *	-	-	4168 028 213

BMW

320i										
5	2.0L 1990cc RWD	95-92	(E36) All Canada Only	5HP18	-	24 00 1 219 956	1056 000 081 *	-	-	4168 023 066
	2.2L 2171cc RWD	05-01	(E36) All Canada Only	5HP19	-	24 00 1 423 929	1060 000 008 *	-	-	4168 022 006

323Ci										
5	2.5L 2494cc RWD	2000	(E46) All	5HP19	-	24 00 7 505 952	1060 000 005 *	-	-	4168 025 146

323i										
5	2.5L 2494cc RWD	2000	(E46) All	5HP19	-	24 00 7 505 952	1060 000 005 *	-	-	4168 025 146

325Ci										
5	2.5L 2494cc RWD	06-01	(E46) All	5HP19	-	24 00 1 423 931	1060 000 009 *	-	-	4168 025 145

325i										
5	2.5L 2494cc RWD	05-01	(E46) All w/ Trans Type Plate # 1060 000 009	5HP19	-	24 00 1 423 931	1060 000 009 *	-	-	4168 025 145
			(E46) All w/ Trans Type Plate # 1060 000 011 (Mexico Only)	5HP19	-	24 00 7 505 952	1060 000 011 *	-	-	4168 025 146
6	3.0L 2996cc RWD	2006	(E90) All	6HP19	-	24 00 7 547 901	1071 010 027	1071 012 085 *	1071 198 974	4168 024 239
						24 00 7 547 901	1071 010 027	1071 012 075	1071 198 974	4168 024 239
						24 00 7 547 901	1071 010 027	1071 012 066	1071 198 974	4168 024 239
						24 00 7 547 901	1071 010 027	1071 012 057	1071 198 974	4168 024 239

* Most current transmission model available

¹ Use Trans. Mfr. Code to find ZF's Transmission Oil recommendations on page iii.

Spd.	Engine & Drive Type	Year	Description	Trans. Mfr. Code ¹	Trans. Code	OEM # / Reman. #	Trans. #	Programmed Trans. #	Replacement Mechatronic	Torque Converter #
------	---------------------	------	-------------	-------------------------------	-------------	------------------	----------	---------------------	-------------------------	--------------------

BMW**325xi**

6	3.0L 2996cc AWD	2006	(E90) All	6HP19X	-	24 00 7 548 368	1071 020 006	1071 022 016 *	1071 198 974	4168 024 239
						24 00 7 548 368	1071 020 006	1071 022 011	1071 198 974	4168 024 239
						24 00 7 548 368	1071 020 006	1071 022 009	1071 198 974	4168 024 239
						24 00 7 548 368	1071 020 006	1071 022 008	1071 198 974	4168 024 239
						24 00 7 548 368	1071 020 006	1071 022 005	1071 198 974	4168 024 239
						24 00 7 548 368	1071 020 006	1071 022 004	1071 198 974	4168 024 239

330Ci

5	3.0L 2979cc RWD	03-01	(E46) All	5HP19	-	24 00 1 423 933	1060 000 010 *	-	-	4168 025 331
---	--------------------	-------	-----------	-------	---	-----------------	-----------------------	---	---	--------------

330i

5	3.0L 2979cc RWD	03-01	(E46) All	5HP19	-	24 00 1 423 933	1060 000 010 *	-	-	4168 025 331
6	3.0L 2996cc RWD	2006	(E90) All	6HP19	-	24 00 7 547 899	1071 010 029	1071 012 086 *	1071 198 974	4168 024 240

330xi

6	3.0L 2996cc AWD	2006	(E90) All	6HP19X	-	24 00 7 548 369	1071 020 007	1071 022 015 *	1071 198 974	4168 024 240
						24 00 7 548 369	1071 020 007	1071 022 012	1071 198 974	4168 024 240
						24 00 7 548 369	1071 020 007	1071 022 010	1071 198 974	4168 024 240
						24 00 7 548 369	1071 020 007	1071 022 006	1071 198 974	4168 024 240
						24 00 7 548 369	1071 020 007	1071 022 003	1071 198 974	4168 024 240

335i

6	3.0L 2979cc RWD	13-07	(E90), (E92), (E93), (F30) All	6HP21	-	24 00 7 630 982	1071 030 072	1071 032 174 *	1071 198 852	4168 025 553
						24 00 7 592 493	1071 030 026	1071 032 131	1071 198 852	4168 025 553
						24 00 7 572 071	1071 030 018	1071 032 066	1071 198 973	4168 025 553
						24 00 7 564 242	1071 030 003	1071 032 019	1071 198 976	4168 025 553
8	3.0L 2979cc RWD	14-12	(E92), (E93), (F30) All	8HP45HIS	-	24 00 7 630 877	1090 014 011	1090 016 031 *	1090 198 996	1090 298 002

335xi

6	3.0L 2979cc AWD	08-07	(E90), (E92) All	6HP21X	-	24 00 7 592 494	1071 050 017	1071 052 061 *	1071 198 851	4168 025 553
						24 00 7 572 080	1071 050 006	1071 052 033	1071 198 851	4168 025 553

525i

5	2.5L 2494cc RWD	04-02	(E39) All	5HP19	-	24 00 1 423 931	1060 000 009 *	-	-	4168 025 145
6	2.5L 2494cc RWD	05-04	(E60) All	6HP19	-	24 00 7 527 713	1071 010 007	1071 012 049 *	1071 198 980	4168 024 150
						24 00 7 527 713	1071 010 007	1071 012 039	1071 198 980	4168 024 150
						24 00 7 527 713	1071 010 007	1071 012 024	1071 198 980	4168 024 150
	3.0L 2996cc RWD	07-06	(E60) All	6HP19	-	24 00 7 547 901	1071 010 027	1071 012 085 *	1071 198 974	4168 024 239
						24 00 7 547 901	1071 010 027	1071 012 075	1071 198 974	4168 024 239
						24 00 7 547 901	1071 010 027	1071 012 066	1071 198 974	4168 024 239

525xi

6	3.0L 2996cc AWD	07-06	(E60) All	6HP19X	-	24 00 7 548 368	1071 020 006	1071 022 016 *	1071 198 974	4168 024 239
						24 00 7 548 368	1071 020 006	1071 022 011	1071 198 974	4168 024 239
						24 00 7 548 368	1071 020 006	1071 022 009	1071 198 974	4168 024 239
						24 00 7 548 368	1071 020 006	1071 022 008	1071 198 974	4168 024 239
						24 00 7 548 368	1071 020 006	1071 022 005	1071 198 974	4168 024 239
						24 00 7 548 368	1071 020 006	1071 022 004	1071 198 974	4168 024 239

* Most current transmission model available

¹ Use Trans. Mfr. Code to find ZF's Transmission Oil recommendations on page iii.

Spd.	Engine & Drive Type	Year	Description	Trans. Mfr. Code ¹	Trans. Code	OEM # / Reman. #	Trans. #	Programmed Trans. #	Replacement Mechatronic	Torque Converter #
------	---------------------	------	-------------	-------------------------------	-------------	------------------	----------	---------------------	-------------------------	--------------------

BMW**528i**

6	3.0L 2996cc RWD	10-08	(E60) All	6HP21	-	25 00 7 592 520	1071 030 021	1071 032 136 *	1071 198 854	4168 024 235
						24 00 7 565 595	1071 030 021	1071 032 071	1071 198 854	4168 024 235

530i

5	3.0L 2979cc RWD	03-02	(E39) All	5HP19	-	24 00 1 423 933	1060 000 010 *	-	-	4168 025 331
	3.0L 2997cc RWD	95-94	(E34) All	5HP18	-	24 00 1 421 412	1056 000 088 *	-	-	4168 026 321
						24 00 1 421 215	1056 000 087	-	-	4168 026 321
6	3.0L 2979cc RWD	05-04	(E60) All	6HP19	-	24 00 7 527 711	1071 010 005	1071 012 050 *	1071 198 980	4168 024 151
						24 00 7 527 711	1071 010 005	1071 012 038	1071 198 980	4168 024 151
						24 00 7 527 711	1071 010 005	1071 012 021	1071 198 980	4168 024 151
						24 00 7 527 711	1071 010 005	1071 012 019	1071 198 980	4168 024 151
						24 00 7 527 711	1071 010 005	1071 012 015	1071 198 980	4168 024 151
	3.0L 2996cc RWD	07-06	(E60) All	6HP19	-	24 00 7 547 899	1071 010 029	1071 012 086 *	1071 198 974	4168 024 240

530xi

6	3.0L 2996cc AWD	07-06	(E60), (E61) All	6HP19X	-	24 00 7 548 369	1071 020 007	1071 022 015 *	1071 198 974	4168 024 240
						24 00 7 548 369	1071 020 007	1071 022 012	1071 198 974	4168 024 240
						24 00 7 548 369	1071 020 007	1071 022 010	1071 198 974	4168 024 240
						24 00 7 548 369	1071 020 007	1071 022 006	1071 198 974	4168 024 240
						24 00 7 548 369	1071 020 007	1071 022 003	1071 198 974	4168 024 240

535i

6	3.0L 2979cc RWD	10-08	(E60) All	6HP21	-	24 00 7 592 496	1071 030 019	1071 032 132 *	1071 198 854	4168 025 553
8	3.0L 2979cc RWD	14-12	(F10) All w/ Start-Stop Feature	8HP45HIS	-	24 00 7 619 329	1090 014 004	1090 016 020 *	1090 198 997	1090 298 023
						24 00 7 616 525	1090 014 004	1090 016 005	1090 198 997	1090 298 023
		11-10	(E60), (F10) All	8HP45	-	24 00 7 616 522	1090 010 008	1090 012 070 *	1087 198 986	1090 322 347
						24 00 7 602 002	1090 010 002	1090 012 017	1087 198 986	1090 298 002

535i GT

8	3.0L 2979cc RWD	14-12	(F07) All w/ Start-Stop Feature	8HP45HIS	-	24 00 7 628 768	1090 014 004	1090 016 032 *	1090 198 997	1090 298 023
		24 00 7 606 582	1090 010 008	1090 012 023	1087 198 986	1090 322 347				
								24 00 7 602 002	1090 010 002	1090 012 017

535xi

6	3.0L 2979cc AWD	2008	(E60), (E61) All	6HP21X	-	24 00 7 592 497	1071 050 008	1071 052 063 *	1071 198 854	4168 025 553
---	--------------------	------	------------------	--------	---	-----------------	--------------	-----------------------	--------------	--------------

540i

5	4.0L 3982cc RWD	95-94	(E34) All	5HP30	-	24 00 1 422 506	1055 000 029 *	-	-	4168 028 221			
						24 00 1 422 506	1055 000 010	-	-	4168 028 221			
	4.4L 4398cc RWD	03-97	(E39) All w/ Trans Type Plate # 1058 000 022	5HP24	-	24 00 1 423 305	1058 000 022 *	-	-	4168 026 396			
						(E39) All w/ Trans Type Plate # 1058 000 021	5HP24	-	24 00 1 423 303	1058 000 021 *	-	-	4168 026 392
						(E39) All w/ Trans Type Plate # 1058 000 016	5HP24	-	24 00 1 423 193	1058 000 016 *	-	-	4168 026 376
		1997	(E39) All	5HP30	-	24 00 1 422 477	1055 000 026 *	-	-	4168 028 221			

* Most current transmission model available

¹ Use Trans. Mfr. Code to find ZF's Transmission Oil recommendations on page iii.

Spd.	Engine & Drive Type	Year	Description	Trans. Mfr. Code ¹	Trans. Code	OEM # / Reman. #	Trans. #	Programmed Trans. #	Replacement Mechatronic	Torque Converter #
------	---------------------	------	-------------	-------------------------------	-------------	------------------	----------	---------------------	-------------------------	--------------------

BMW**545i**

6	4.4L 4398cc RWD	05-04	(E60) All w/ Trans Type Plate # 1068 010 160	6HP26	-	24 00 7 547 886	1068 010 160	1068 012 366 *	1068 198 932	4168 026 624
						24 00 7 547 886	1068 010 160	1068 012 331	1068 198 932	4168 026 624
			(E60) All w/ Trans Type Plate # 1068 010 093	6HP26	-	24 00 7 536 931	1068 010 093	1068 012 253 *	1068 198 932	4168 026 624
						24 00 7 536 931	1068 010 093	1068 012 243	1068 198 932	4168 026 624
						24 00 7 536 931	1068 010 093	1068 012 192	1068 198 932	4168 026 624

550i

6	4.8L 4837cc RWD	10-08	(E60) All	6HP28	-	24 00 7 592 376	1068 040 009	1068 042 079 *	1068 198 922	4168 027 086
						24 00 7 572 505	1068 040 021	1068 042 043	1068 198 922	4168 027 086
						24 00 7 572 505	1068 040 009	1068 042 043	1068 198 922	4168 027 086
						24 00 7 572 505	1068 040 009	1068 042 034	1068 198 922	4168 027 086
						24 00 7 572 505	1068 040 009	1068 042 033	1068 198 922	4168 027 086
						24 00 7 572 505	1068 040 009	1068 042 019	1068 198 922	4168 027 086
		07-06	(E60) All	6HP26	-	24 00 7 555 928	1068 010 154	1068 012 400 *	1068 198 936	4168 027 090
						24 00 7 555 928	1068 010 154	1068 012 363	1068 198 936	4168 027 090
						24 00 7 555 928	1068 010 154	1068 012 362	1068 198 936	4168 027 090
						24 00 7 555 928	1068 010 154	1068 012 329	1068 198 936	4168 027 090
						24 00 7 555 928	1068 010 151	1068 012 363	1068 198 936	4168 027 090

550i GT

8	4.4L 4395cc RWD	14-10	(F07) All	8HP70	-	24 00 7 616 610	1087 010 007	1087 012 036 *	1087 198 987	1087 298 026
						24 00 7 607 914	1087 010 007	1087 012 026	1087 198 987	1087 298 026

550i GT xDrive

8	4.4L 4395cc AWD	14-10	(F07) All	8HP70X	-	24 00 7 607 917	1087 020 013	1087 022 018 *	1087 198 987	1087 298 026
						24 00 7 603 644	1087 020 007	1087 022 012	1087 198 987	1087 298 026

550i xDrive

8	4.4L 4395cc AWD	14-11	(F10) All	8HP70X	-	24 00 7 631 095	1087 020 013	1087 022 070 *	1087 198 987	1087 298 026
						24 00 7 616 611	1087 020 013	1087 022 046	1087 198 987	1087 298 026
						24 00 7 302 133	1087 010 002	1087 012 019	1087 198 987	1087 298 026

645Ci

6	4.4L 4398cc RWD	05-04	(E63), (E64) All w/ Trans Type Plate # 1060 012 160	6HP26	-	24 00 7 547 886	1068 010 160	1068 012 366 *	1068 198 932	4168 026 624
						24 00 7 536 931	1068 010 160	1068 012 331	1068 198 932	4168 026 624
			(E63), (E64) All w/ Trans Type Plate # 1068 010 093	6HP26	-	24 00 7 536 931	1068 010 093	1068 012 253 *	1068 198 932	4168 026 624

650i

6	4.8L 4837cc RWD	10-08	(E63), (E64) All	6HP28	-	24 00 7 592 376	1068 040 009	1068 042 079 *	1068 198 922	4168 027 086
		08-06	(E63), (E64) All	6HP26	-	24 00 7 555 928	1068 010 154	1068 012 400 *	1068 198 936	4168 027 090

740i

5	4.0L 3982cc RWD	1995	(E38) All	5HP30	-	24 00 1 422 510	1055 000 031 *	-	-	4168 028 221			
		94-93	(E32) All	5HP30	-	24 00 1 422 506	1055 000 029 *	-	-	4168 028 221			
						24 00 1 422 506	1055 000 010	-	-	4168 028 221			
	4.4L 4398cc RWD	01-97	(E38) All w/ Trans Type Plate # 1058 000 022	5HP24	-	24 00 1 423 305	1058 000 022 *	-	-	4168 026 396			
						(E38) All w/ Trans Type Plate # 1058 000 021	5HP24	-	24 00 1 423 303	1058 000 021 *	-	-	4168 026 392
						(E38) All w/ Trans Type Plate # 1058 000 016	5HP24	-	24 00 1 423 193	1058 000 016 *	-	-	4168 026 376

* Most current transmission model available

¹ Use Trans. Mfr. Code to find ZF's Transmission Oil recommendations on page iii.

Spd.	Engine & Drive Type	Year	Description	Trans. Mfr. Code ¹	Trans. Code	OEM # / Reman. #	Trans. #	Programmed Trans. #	Replacement Mechatronic	Torque Converter #
------	---------------------	------	-------------	-------------------------------	-------------	------------------	----------	---------------------	-------------------------	--------------------

BMW**740i (Continued)**

5	4.4L 4398cc RWD	95-93	(E38) All	5HP30	-	24 00 1 422 477	1055 000 026 *	-	-	4168 028 221
6	3.0L 2979cc RWD	12-11	(F01) All	6HP21	-	24 00 7 630 979	1071 030 071	1071 032 173 *	1071 198 853	4168 025 554
						24 00 7 613 895	1071 030 063	1071 032 167	1071 198 853	4168 025 554
						24 00 7 600 130	1071 030 049	1071 032 157	1071 198 853	4168 025 554

740iL

5	4.0L 3982cc RWD	1995	(E38) All	5HP30	-	24 00 1 422 510	1055 000 031 *	-	-	4168 028 221			
		94-93	(E32) All	5HP30	-	24 00 1 422 506	1055 000 029 *	-	-	4168 028 221			
						24 00 1 422 506	1055 000 010	-	-	4168 028 221			
	4.4L 4398cc RWD	01-96	(E38) All w/ Trans Type Plate # 1058 000 022	5HP24	-	24 00 1 423 305	1058 000 022 *	-	-	4168 026 396			
						(E38) All w/ Trans Type Plate # 1058 000 021	5HP24	-	24 00 1 423 303	1058 000 021 *	-	-	4168 026 392
						(E38) All w/ Trans Type Plate # 1058 000 016	5HP24	-	24 00 1 423 193	1058 000 016 *	-	-	4168 026 376
			95-93	(E38) All	5HP30	-	24 00 1 422 477	1055 000 026 *	-	-	4168 028 221		

740Li

6	3.0L 2979cc RWD	12-11	(F02) All	6HP21	-	24 00 7 613 895	1071 030 063	1071 032 167 *	1071 198 853	4168 025 554
						24 00 7 600 130	1071 030 049	1071 032 157	1071 198 853	4168 025 554

745i

6	4.4L 4398cc RWD	05-02	(E65) All w/ Trans Type Plate # 1068 010 097	6HP26	-	24 00 7 531 245	1068 010 097	1068 012 249 *	1070 198 997	4168 026 624
						24 00 7 531 245	1068 010 097	1068 012 221	1070 198 997	4168 026 624
						24 00 7 531 245	1068 010 097	1068 012 197	1070 198 997	4168 026 624
			(E65) All w/ Trans Type Plate # 1068 010 051	6HP26	-	24 00 7 528 952	1068 010 051	1068 012 157 *	1068 198 937	4168 026 624
						24 00 7 528 952	1068 010 051	1068 012 100	1068 198 937	4168 026 624
			(E65) All w/ Trans Type Plate # 1068 010 060	6HP26	-	24 00 7 528 161	1068 010 060	1068 012 116 *	1068 198 931	4168 026 624
						(E65) All w/ Trans Type Plate # 1068 010 057	6HP26	-	24 00 7 521 144	1068 010 057
			(E65) All w/ Trans Type Plate # 1068 010 057	6HP26	-	24 00 7 521 144	1068 010 057	1068 012 092	1068 198 931	4168 026 624
						24 00 7 521 144	1068 010 057	1068 012 065	1068 198 931	4168 026 624
						24 00 7 521 144	1068 010 057	1068 012 065	1068 198 931	4168 026 624
						24 00 7 521 144	1068 010 057	1068 012 047	1068 198 931	4168 026 624

745Li

6	4.4L 4398cc RWD	05-02	(E66) All w/ Trans Type Plate # 1068 010 097	6HP26	-	24 00 7 531 245	1068 010 097	1068 012 249 *	1070 198 997	4168 026 624
						24 00 7 531 245	1068 010 097	1068 012 221	1070 198 997	4168 026 624
						24 00 7 531 245	1068 010 097	1068 012 197	1070 198 997	4168 026 624
			(E66) All w/ Trans Type Plate # 1068 010 060	6HP26	-	24 00 7 528 161	1068 010 060	1068 012 116 *	1068 198 931	4168 026 624
			(E66) All w/ Trans Type Plate # 1068 010 057	6HP26	-	24 00 7 521 144	1068 010 057	1068 012 106 *	1068 198 931	4168 026 624
						24 00 7 521 144	1068 010 057	1068 012 092	1068 198 931	4168 026 624
			(E66) All w/ Trans Type Plate # 1068 010 057	6HP26	-	24 00 7 521 144	1068 010 057	1068 012 065	1068 198 931	4168 026 624
						24 00 7 521 144	1068 010 057	1068 012 065	1068 198 931	4168 026 624
						24 00 7 521 144	1068 010 057	1068 012 047	1068 198 931	4168 026 624
						24 00 7 521 144	1068 010 057	1068 012 047	1068 198 931	4168 026 624
(E66) All w/ Trans Type Plate # 1068 010 051	6HP26	-	24 00 7 528 952	1068 010 051	1068 012 100 *	1068 198 937	4168 026 624			

750i

6	4.4L 4398cc RWD	12-09	(F01) All w/ Trans Type Plate # 1068 040 057 & # 1068 040 047	6HP28	-	24 00 7 631 073	1068 040 057	1068 042 146 *	1068 198 426	4168 026 716
						24 00 7 612 139	1068 040 047	1068 042 132	1068 198 426	4168 026 716

* Most current transmission model available

¹ Use Trans. Mfr. Code to find ZF's Transmission Oil recommendations on page iii.

Spd.	Engine & Drive Type	Year	Description	Trans. Mfr. Code ¹	Trans. Code	OEM # / Reman. #	Trans. #	Programmed Trans. #	Replacement Mechatronic	Torque Converter #
------	---------------------	------	-------------	-------------------------------	-------------	------------------	----------	---------------------	-------------------------	--------------------

BMW

750i (Continued)										
6	4.4L 4398cc RWD	12-09	(F01) All w/ Trans Type Plate # 1068 040 032	6HP28	-	24 00 7 590 125	1068 040 032	1068 042 096 *	1068 198 426	4168 026 716
	4.8L 4837cc RWD	08-06	(E65) All	6HP26	-	24 00 7 583 313	1068 010 166	1068 012 463 *	1068 198 933	4168 027 090
						24 00 7 539 767	1068 010 166	1068 012 351	1068 198 933	4168 027 090
						24 00 7 539 767	1068 010 166	1068 012 336	1068 198 933	4168 027 090
						24 00 7 539 767	1068 010 166	1068 012 304	1068 198 933	4168 027 090
						24 00 7 539 767	1068 010 166	1068 012 261	1068 198 933	4168 027 090
						24 00 7 539 767	1068 010 123	1068 012 336	1068 198 933	4168 027 090
						24 00 7 539 767	1068 010 123	1068 012 304	1068 198 933	4168 027 090
						24 00 7 539 767	1068 010 123	1068 012 261	1068 198 933	4168 027 090

750iL										
5	5.4L 5379cc RWD	01-95	(E38) All	5HP30	-	24 00 1 423 479	1055 000 040 *	-	-	4168 028 213
						24 00 1 422 512	1055 000 032	-	-	4168 028 213
						24 00 1 422 512	1055 000 017	-	-	4168 028 213

750Li										
6	4.4L 4398cc RWD	12-09	(F02), (F04) All	6HP28	-	24 00 7 590 125	1068 040 032	1068 042 096 *	1068 198 426	4168 026 716
						24 00 7 592 486	1068 040 024	1068 042 081	1068 198 426	4168 026 716

760i															
6	6.0L 5972cc RWD	06-04	(E65) All	6HP26	-	24 00 7 539 773	1068 010 125	1068 012 338 *	1068 198 933	4168 028 632					
						24 00 7 539 773	1068 010 125	1068 012 306	1068 198 933	4168 028 632					
						24 00 7 539 773	1068 010 125	1068 012 263	1068 198 933	4168 028 632					
						24 00 7 556 841	1068 010 168	1068 012 353	1068 198 933	4168 028 632					
						24 00 7 531 250	1068 010 092	1068 012 251	1070 198 997	4168 028 632					
						24 00 7 531 250	1068 010 092	1068 012 223	1070 198 997	4168 028 632					
						24 00 7 531 250	1068 010 092	1068 012 199	1070 198 997	4168 028 632					
						24 00 7 534 330	1068 010 083	1068 012 185	1068 198 937	4168 028 632					
						24 00 7 534 330	1068 010 083	1068 012 159	1068 198 937	4168 028 632					
						24 00 7 534 330	1068 010 083	1068 012 103	1068 198 937	4168 028 632					
						24 00 7 528 215	1068 010 062	1068 012 118	1068 198 931	4168 028 632					
						24 00 7 534 330	1068 010 054	1068 012 159	1068 198 937	4168 028 632					
						24 00 7 534 330	1068 010 054	1068 012 103	1068 198 937	4168 028 632					
											24 00 7 556 843	1068 010 171	1068 012 355 *	1068 198 933	4168 028 632
											24 00 7 546 653	1068 010 127	1068 012 339	1068 198 933	4168 028 632
											24 00 7 545 781	1068 010 106	1068 012 257	1070 198 997	4168 028 632
					24 00 7 537 877	1068 010 106	1068 012 226	1070 198 997	4168 028 632						
					24 00 7 537 876	1068 010 106	1068 012 220	1070 198 997	4168 028 632						

* Most current transmission model available

¹ Use Trans. Mfr. Code to find ZF's Transmission Oil recommendations on page iii.

Spd.	Engine & Drive Type	Year	Description	Trans. Mfr. Code ¹	Trans. Code	OEM # / Reman. #	Trans. #	Programmed Trans. #	Replacement Mechatronic	Torque Converter #
------	---------------------	------	-------------	-------------------------------	-------------	------------------	----------	---------------------	-------------------------	--------------------

BMW

760Li										
6	6.0L 5972cc RWD	08-03	(E66) All	6HP26	-	24 00 7 539 773	1068 010 125	1068 012 338 *	1068 198 933	4168 028 632
						24 00 7 539 773	1068 010 125	1068 012 306	1068 198 933	4168 028 632
						24 00 7 539 773	1068 010 125	1068 012 263	1068 198 933	4168 028 632
						24 00 7 556 841	1068 010 168	1068 012 353	1068 198 933	4168 028 632
						24 00 7 531 250	1068 010 092	1068 012 251	1070 198 997	4168 028 632
						24 00 7 531 250	1068 010 092	1068 012 223	1070 198 997	4168 028 632
						24 00 7 531 250	1068 010 092	1068 012 199	1070 198 997	4168 028 632
						24 00 7 534 330	1068 010 083	1068 012 185	1068 198 937	4168 028 632
						24 00 7 534 330	1068 010 083	1068 012 159	1068 198 937	4168 028 632
						24 00 7 534 330	1068 010 083	1068 012 103	1068 198 937	4168 028 632
						24 00 7 528 215	1068 010 062	1068 012 118	1068 198 931	4168 028 632
						24 00 7 534 330	1068 010 054	1068 012 159	1068 198 937	4168 028 632
						24 00 7 534 330	1068 010 054	1068 012 103	1068 198 937	4168 028 632

840Ci											
5	4.0L 3982cc RWD	95-94	(E31) All	5HP30	-	24 00 1 422 508	1055 000 030 *	-	-	4168 028 221	
		4.4L 4398cc RWD	97-96	(E31) All	5HP24	-	24 00 1 422 201	1058 000 005 *	-	-	4168 026 376
			1996	(E31) All	5HP30	-	24 00 1 422 477	1055 000 026 *	-	-	4168 028 221

840i										
5	4.0L 3982cc RWD	95-94	(E31) All	5HP30	-	24 00 1 422 508	1055 000 030 *	-	-	4168 028 221
						24 00 1 422 508	1055 000 011	-	-	4168 028 221

850Ci										
5	5.0L 4988cc RWD	97-95	(E31) All	5HP30	-	24 00 1 422 512	1055 000 032 *	-	-	4168 028 213
						24 00 1 422 512	1055 000 017	-	-	4168 028 213

ACTIVE HYBRID 7										
8	3.0L 2979cc RWD	14-13	(F02) All	8HP70	-	24 00 7 616 612	1087 040 003	1087 042 006 *	1087 198 988	1087 298 044
						24 00 7 605 238	1087 040 002	1087 042 004	1087 198 988	1087 298 044

ALPINA B7										
6	4.4L 4398cc RWD	12-11	(F01) All	6HP28X	-	24 00 7 612 003	1068 050 034	1068 052 123 *	1068 198 426	4168 026 715
		08-07	(E65) All	6HP26	-	24 00 7 544 599	1068 010 134	1068 012 357 *	1070 198 354	4168 028 632

ALPINA B7 XDRIVE										
6	4.4L 4395cc AWD	12-11	(F01) All	6HP28X	-	24 00 7 631 082	1068 050 048	1068 052 135 *	1068 198 426	4168 026 715

M3										
5	3.0L 2990cc RWD	99-95	(E36) All	5HP18	-	24 00 1 421 947	1056 000 097 *	-	-	4168 026 349
		3.2L 3152cc RWD	99-95	(E36) All	5HP18	-	24 00 2 228 376	1056 000 099 *	-	-

X3										
8	3.0L 2979cc AWD	14-11	(F25) All xDrive35i w/ Start-Stop Feature	8HP45XHIS	-	24 00 7 637 229	1090 024 012	1090 026 067 *	1090 198 998	1090 298 002
						24 00 7 616 512	1090 024 012	1090 026 011	1090 198 998	1090 298 002
						(F25) All xDrive35i (Exc. Start-Stop Feature)	8HP45X	-	24 00 7 616 511	1090 020 023
	3.0L 2996cc AWD	12-11	(F25) All xDrive 28i	8HP45X	-	24 00 7 636 210	1090 020 029	1090 022 089 *	1087 198 986	1090 298 031
						24 00 7 623 318	1090 020 029	1090 022 051	1087 198 986	1090 298 031
						24 00 7 616 510	1090 020 013	1090 022 036	1087 198 986	1090 298 031

* Most current transmission model available

¹ Use Trans. Mfr. Code to find ZF's Transmission Oil recommendations on page iii.

Spd.	Engine & Drive Type	Year	Description	Trans. Mfr. Code ¹	Trans. Code	OEM # / Reman. #	Trans. #	Programmed Trans. #	Replacement Mechatronic	Torque Converter #
------	---------------------	------	-------------	-------------------------------	-------------	------------------	----------	---------------------	-------------------------	--------------------

BMW

X5										
5	4.4L 4398cc AWD	03-00	(E53) All	5HP24	-	24 00 1 423 950	1058 000 029 *	-	-	4168 026 604
	4.6L 4598cc AWD	03-02	(E53) All	5HP24	-	24 00 7 512 588	1058 000 034 *	-	-	4168 028 299
6	3.0L 2996cc AWD	10-07	(E70) All	6HP21X	-	24 00 7 571 680	1071 050 016	1071 052 016 *	1071 198 854	4168 024 234
						24 00 7 567 487	1071 050 001	1071 052 006	1071 198 854	4168 024 234
						24 00 7 558 718	1071 050 001	1071 052 001	1071 198 854	4168 024 234
	4.4L 4395cc AWD	13-10	(E70) All	6HP28X	-	24 00 7 631 076	1068 050 046	1068 052 133 *	1068 198 870	4168 026 715
						24 00 7 607 877	1068 050 035	1068 052 116	1068 198 870	4168 026 715
	4.4L 4398cc AWD	06-04	(E53) All 4.4i	6HP26X	-	24 00 7 533 910	1068 020 018	1068 022 090 *	1068 198 985	4168 026 624
24 00 7 533 910						1068 020 018	1068 022 058	1068 198 985	4168 026 624	
24 00 7 533 910						1068 020 018	1068 022 043	1068 198 985	4168 026 624	
24 00 7 533 910						1068 020 018	1068 022 028	1068 198 985	4168 026 624	
4.8L 4837cc AWD	06-04	(E53) All	6HP26X	-	24 00 7 530 100	1068 020 014	1068 022 092 *	1068 198 985	4168 028 634	
					24 00 7 530 100	1068 020 014	1068 022 057	1068 198 985	4168 028 634	
					24 00 7 530 100	1068 020 014	1068 022 007	1068 198 985	4168 028 634	
					(E53) All 4.8is	6HP28X	-	24 00 7 570 298	1068 050 001	1068 052 015 *
24 00 7 566 707	1068 050 001	1068 052 008	1068 198 935	4168 027 086						
8	3.0L 2979cc AWD	13-11	(E70) All	8HP45X	-	24 00 7 616 513	1090 020 012	1090 022 037 *	1087 198 985	1090 322 347
						24 00 7 612 811	1090 020 012	1090 022 028	1087 198 985	1090 322 347
	4.4L 4395cc AWD	13-11	(E70) All	8HP70X	-	24 00 7 630 573	1087 020 014	1087 022 062 *	1087 198 985	1087 298 026
						24 00 7 612 812	1087 020 014	1087 022 031	1087 198 985	1087 298 026

X6										
6	4.4L 4395cc AWD	14-08	(E71) All	6HP28X	-	24 00 7 631 076	1068 050 046	1068 052 133 *	1068 198 870	4168 026 715
8	3.0L 2979cc AWD	14-11	(E71) All xDrive 35i	8HP45X	-	24 00 7 616 513	1090 020 012	1090 022 037 *	1087 198 985	1090 298 002
						24 00 7 612 811	1090 020 012	1090 022 028	1087 198 985	1090 298 002
	4.4L 4395cc AWD	14-11	(E71) All xDrive 50i	8HP70X	-	24 00 7 630 573	1087 020 014	1087 022 062 *	1087 198 985	1087 298 026
						24 00 7 612 812	1087 020 014	1087 022 031	1087 198 985	1087 298 026

Z4										
5	2.5L 2494cc RWD	05-03	(E85) All	5HP19	-	24 00 1 423 931	1060 000 009 *	-	-	4168 025 145
	3.0L 2979cc RWD	05-03	(E85) All	5HP19	-	24 00 1 423 933	1060 000 010 *	-	-	4168 025 331
6	3.0L 2996cc RWD	08-06	(E85), (E86) All	6HP19	-	24 00 7 573 806	1071 010 029	1071 012 090 *	1071 198 974	4168 024 240
						24 00 7 573 806	1071 010 029	1071 012 081	1071 198 974	4168 024 240
						24 00 7 573 806	1071 010 029	1071 012 079	1071 198 974	4168 024 240

Z8										
5	4.8L 4837cc RWD	2003	(E52) All	5HP24	-	24 00 8 025 841	1058 000 035 *	-	-	4168 028 299

JAGUAR

S-TYPE										
6	3.0L 2967cc RWD	08-06	(X206) All	6HP26	-	6R837000DD	1068 010 162	1068 012 388 *	1068 198 943	4168 026 606
		05-04/04	(X204) All	6HP26	-	2R837000GP	1068 010 115	1068 012 316 *	1068 198 946	4168 026 606
						2R837000GN	1068 010 115	1068 012 231	1068 198 946	4168 026 606
						2R837000GM	1068 010 102	1068 012 240 *	1068 198 950	4168 026 606
		04/04-03	(X204) All	6HP26	-	2R837000GL	1068 010 102	1068 012 207	1068 198 950	4168 026 606
						2R837000GK	1068 010 079	1068 012 144	1068 198 950	4168 026 606

* Most current transmission model available

¹ Use Trans. Mfr. Code to find ZF's Transmission Oil recommendations on page iii.

Spd.	Engine & Drive Type	Year	Description	Trans. Mfr. Code ¹	Trans. Code	OEM # / Reman. #	Trans. #	Programmed Trans. #	Replacement Mechatronic	Torque Converter #
------	---------------------	------	-------------	-------------------------------	-------------	------------------	----------	---------------------	-------------------------	--------------------

JAGUAR**S-TYPE (Continued)**

6	4.2L 4196cc RWD	2003	(X202) All	6HP26	-	2R837000GJ	1068 010 045	1068 012 149 *	1068 198 948	4168 026 606
						2R837000GH	1068 010 045	1068 012 084	1068 198 948	4168 026 606
						2R837000GG	1068 010 032	1068 012 072	1068 198 948	4168 026 606
						2R837000GF	1068 010 032	1068 012 069	1068 198 948	4168 026 606
		08-06	(X206) All Non-Supercharged	6HP26	-	6R837000BD	1068 010 163	1068 012 386 *	1068 198 943	4168 026 608
						6R837000BC	1068 010 163	1068 012 378	1068 198 943	4168 026 608
			(X206) All Supercharged	6HP26	-	6R837000CD	1068 010 164	1068 012 387 *	1068 198 948	4168 028 635
						6R837000CC	1068 010 164	1068 012 379	1068 198 943	4168 028 635
		05-04	(X204) All Non-Supercharged	6HP26	-	2R837000KL	1068 010 113	1068 012 314 *	1068 198 946	4168 026 608
						2R837000KJ	1068 010 100	1068 012 205	1068 198 947	4168 026 608
						2R837000KH	1068 010 075	1068 012 140	1068 198 948	4168 026 608
			(X204) All Supercharged	6HP26	-	2R837000LH	1068 010 076	1068 012 141 *	1068 198 948	4168 028 635
		05-03	(X202) All Supercharged	6HP26	-	2R837000LG	1068 010 044	1068 012 148 *	1068 198 948	4168 028 635
						2R837000LF	1068 010 044	1068 012 083	1068 198 948	4168 028 635
						2R837000LE	1068 010 031	1068 012 068	1068 198 948	4168 028 635
						2R837000KE	1068 010 030	1068 012 067	1068 198 948	4168 026 608
		2003	(X202) All Non-Supercharged	6HP26	-	2R837000KG	1068 010 043	1068 012 147 *	1068 198 948	4168 026 608
						2R837000KF	1068 010 043	1068 012 082	1068 198 948	4168 026 608
						2R837000KE	1068 010 030	1068 012 067	1068 198 948	4168 026 608

XF

6	4.2L 4196cc RWD	10-09	All Non-Supercharged	6HP26	-	9X237000FC	1068 010 213	1068 012 491 *	1068 198 429	4168 026 608
		2009	All Supercharged	6HP26	-	9X237000FA	1068 010 213	1068 012 487	1068 198 429	4168 026 608
						8X237000CE	1068 010 193	1068 012 477 *	1068 198 915	4168 028 635
	5.0L 5000cc RWD	12-10	(X250) All Non-Supercharged	6HP28	-	9X237000CE	1068 040 061	1068 042 150 *	1068 198 428	4168 027 093
						9X237000CD	1068 040 035	1068 042 138	1068 198 428	4168 027 093
			(X250) All Supercharged	6HP28	-	9X237000BE	1068 040 062	1068 042 151 *	1068 198 428	4168 027 094
						9X237000BD	1068 040 036	1068 042 139	1068 198 428	4168 027 094

XJ

6	3.0L 2967cc RWD	04-03	(X350) All Non-Supercharged w/ Trans Plate Type # 1068 010 079	6HP26	-	2W937000DH	1068 010 079	1068 012 139 *	1068 198 950	4168 026 606
			(X350) All Non-Supercharged w/ Trans Type Plate # 1068 010 065	6HP26	-	2W937000DE	1068 010 065	1068 012 121 *	1068 198 945	4168 026 606
			5.0L 5000cc RWD	12-11	(X351) All Non-Supercharged	6HP28	-	9X237000CE	1068 040 061	1068 042 150 *
	9X237000CD	1068 040 035						1068 042 138	1068 198 428	4168 027 093
	(X351) All Supercharged	6HP28			-	9X237000BE	1068 040 062	1068 042 151 *	1068 198 428	4168 027 094
							9X237000BD	1068 040 036	1068 042 139	1068 198 428

XJ8

5	4.0L 3996cc RWD	03-98	All w/ Trans Type Plate # 1058 000 026	5HP24	-	NNE4400AAE	1058 000 026 *	-	-	4168 026 389
			All w/ Trans Type Plate # 1058 000 015	5HP24	-	NJB4400ABE	1058 000 015 *	-	-	4168 026 381
6	4.2L 4196cc RWD	09-07	(X358) All Non-Supercharged	6HP26	-	6W937000BE	1068 010 163	1068 012 495 *	1068 198 948	4168 026 608
						6W937000BD	1068 010 163	1068 012 389	1068 198 948	4168 026 608
						6W937000BC	1068 010 163	1068 012 381	1068 198 948	4168 026 608
						6W937000BB	1068 010 163	1068 012 348	1068 198 948	4168 026 608

* Most current transmission model available

¹ Use Trans. Mfr. Code to find ZF's Transmission Oil recommendations on page iii.

Spd.	Engine & Drive Type	Year	Description	Trans. Mfr. Code ¹	Trans. Code	OEM # / Reman. #	Trans. #	Programmed Trans. #	Replacement Mechatronic	Torque Converter #
------	---------------------	------	-------------	-------------------------------	-------------	------------------	----------	---------------------	-------------------------	--------------------

JAGUAR**XJ8 (Continued)**

6	4.2L 4196cc RWD	06-04	(X350) All Non-Supercharged	6HP26	-	2W937000BN	1068 010 113	1068 012 320 *	1068 198 946	4168 026 608
						2W937000BK	1068 010 100	1068 012 211	1068 198 947	4168 026 608
						2R837000KG1	1068 010 075	1068 012 178	1068 198 947	4168 026 608
						2W937000BJ	1068 010 075	1068 012 135	1068 198 950	4168 026 608
						2W937000BH	1068 010 070	1068 012 153	1068 198 948	4168 026 608

XJR

6	4.2L 4196cc RWD	09-07	(X358) All Supercharged	6HP26	-	6W937000CE	1068 010 164	1068 012 496 *	1068 198 948	4168 028 635
						6W937000CD	1068 010 164	1068 012 390	1068 198 943	4168 028 635
						6W937000CC	1068 010 164	1068 012 382	1068 198 948	4168 028 635
						6W937000CB	1068 010 164	1068 012 349	1068 198 948	4168 028 635
	06-04	(X350) All Supercharged	6HP26	-	2W937000CN	1068 010 114	1068 012 321 *	1068 198 946	4168 028 635	
					2W937000CK	1068 010 101	1068 012 212	1068 198 947	4168 028 635	
					2R837000LG1	1068 010 076	1068 012 179	1068 198 947	4168 028 635	
					2W937000CJ	1068 010 076	1068 012 136	1068 198 950	4168 028 635	
					2W937000CH	1068 010 071	1068 012 154	1068 198 945	4168 028 635	
					2W937000AF	1068 010 066	1068 012 122	1068 198 945	4168 026 607	
					2W937000CF	1068 010 064	1068 012 120	1068 198 945	4168 028 635	
					2W937000CE	1068 010 044	1068 012 087	1068 198 948	4168 028 635	

XK

6	4.2L 4196cc RWD	09-07	All Non-Supercharged	6HP26	-	6W837000BC	1068 010 136	1068 012 373 *	1068 198 941	4168 026 608
	5.0L 5000cc RWD	14-10	(X150) All Non-Supercharged	6HP28	-	9X237000CE	1068 040 061	1068 042 150 *	1068 198 428	4168 027 093
						9X237000CD	1068 040 035	1068 042 138	1068 198 428	4168 027 093

XK8

5	4.0L 3996cc RWD	02-00	All	5HP24	-	NNE4400AAE	1058 000 026 *	-	-	4168 026 389
		99-98	All	5HP24	-	NJB4400ABE	1058 000 015 *	-	-	4168 026 381
						NJA4400AGE	1058 000 013	-	-	4168 026 381
		1997	All	5HP24	-	NJA4400AFE	1058 000 009 *	-	-	4168 026 381
6	4.2L 4196cc RWD	06-03	(X100) All Non-Supercharged	6HP26	-	3W837000AL	1068 010 113	1068 012 318 *	1068 198 946	4168 026 608
						3W837000AJ	1068 010 100	1068 012 209	1068 198 947	4168 026 608
						2R837000KG1	1068 010 075	1068 012 178	1068 198 947	4168 026 608
						3W837000AH	1068 010 075	1068 012 142	1068 198 947	4168 026 608
						3W837000AG	1068 010 043	1068 012 151	1068 198 948	4168 026 608
						3W837000AF	1068 010 043	1068 012 123	1068 198 948	4168 026 608
						3W837000AE	1068 010 043	1068 012 108	1068 198 948	4168 026 608
						3W837000AD	1068 010 043	1068 012 090	1068 198 948	4168 026 608
						3W837000AC	1068 010 036	1068 012 104	1068 198 945	4168 026 608

XKR

6	4.2L 4196cc RWD	09-03	All Supercharged	6HP26	-	7W837000AC	1068 010 185	1068 012 410 *	1068 198 941	4168 028 635
						7W837000AA	1068 010 130	1068 012 260	1068 198 941	4168 028 635
						3W837000BL	1068 010 114	1068 012 319	1068 198 946	4168 028 635
						3W837000BJ	1068 010 101	1068 012 210	1068 198 947	4168 028 635
						2R837000BH	1068 010 076	1068 012 143	1068 198 950	4168 028 635
						3W837000BG	1068 010 044	1068 012 152	1068 198 948	4168 028 635
	5.0L 5000cc RWD	14-10	(X150) All Supercharged	6HP28	-	9X237000BE	1068 040 062	1068 042 151 *	1068 198 428	4168 027 094
9X237000BD						1068 040 036	1068 042 139	1068 198 428	4168 027 094	

* Most current transmission model available

¹ Use Trans. Mfr. Code to find ZF's Transmission Oil recommendations on page iii.

Spd.	Engine & Drive Type	Year	Description	Trans. Mfr. Code ¹	Trans. Code	OEM # / Reman. #	Trans. #	Programmed Trans. #	Replacement Mechatronic	Torque Converter #
------	---------------------	------	-------------	-------------------------------	-------------	------------------	----------	---------------------	-------------------------	--------------------

JAGUAR

XKR-S										
6	5.0L 5000cc RWD	14-12	(X150) All Supercharged	6HP28	-	BW8M7000BC	1068 040 063	1068 042 152 *	1068 198 428	4168 027 106

LAND ROVER

DISCOVERY										
4	4.0L 3950cc 4WD	02-96	All	4HP22	-	TGD 101360R	1043 010 765 *	-	-	4168 028 354

LR3										
6	4.0L 4009cc 4WD	07-05	All	6HP26X	-	TGD 500580	1068 020 052	1068 022 070 *	1068 198 942	4168 026 605
						TGD 500580	1068 020 043	1068 022 079	1068 198 938	4168 026 605
	4.4L 4394cc 4WD	09-05	All	6HP26X	-	TGD 500560	1068 020 069	1068 022 098 *	1068 198 942	4168 026 608
						TGD 500560	1068 020 065	1068 022 069	1068 198 938	4168 026 608
						TGD 500560	1068 020 044	1068 022 080	1068 198 938	4168 026 608

LR4										
6	5.0L 5000cc 4WD	13-10	All	6HP28X	-	AH4 27000AH	1068 050 019	1068 052 128 *	1068 198 431	4168 027 093
						AH4 27000AH	1068 050 019	1068 052 119	1068 198 431	4168 027 093
						AH4 27000AG	1068 050 019	1068 052 102	1068 198 431	4168 027 093

RANGE ROVER										
4	4.0L 3950cc 4WD	95-87	All	4HP22	-	TGD 101030R	1043 010 764 *	-	-	4168 028 354
	4.6L 4554cc 4WD	02-93	All	4HP24	-	TGD 000170R	1043 030 069 *	-	-	4168 028 354
						TGD 101420R	1043 030 065	-	-	4168 028 354
5	4.4L 4398cc 4WD	05-04	All	5HP24	-	TGD 000150R	1058 000 032 *	-	-	4168 026 604
6	4.2L 4196cc 4WD	09-06	All Supercharged	6HP26X	-	6H2 270041DA	1068 020 070	1068 022 099 *	1068 198 944	4168 028 635
						TGD 500600	1068 020 066	1068 022 071	1068 198 944	4168 028 635
						TGD 500600	1068 020 054	1068 022 082	1068 198 944	4168 028 635
						TGD 500600	1068 020 054	1068 022 067	1068 198 944	4168 028 635
	4.4L 4394cc 4WD	09-06	All	6HP26X	-	6H2 270041AA	1068 020 069	1068 022 098 *	1068 022 098	1068 198 944
						TGD 500560	1068 020 051	1068 022 065	1068 198 944	4168 026 608
	5.0L 5000cc 4WD	12-10	All HSE (Non-Supercharged)	6HP28X	-	AH4 27000AJ	1068 050 041	1068 052 128 *	1068 198 431	4168 027 093
						AH4 27000AH	1068 050 019	1068 052 119	1068 198 431	4168 027 093
						AH4 27000AG	1068 050 019	1068 052 102	1068 198 431	4168 027 093
						AH4 27000AE	1068 050 019	1068 052 099	1068 198 431	4168 027 093
AH4 27000BH						1068 050 020	1068 052 120 *	1068 198 431	4168 027 094	
AH4 27000BG						1068 050 020	1068 052 103	1068 198 431	4168 027 094	
					AH4 27000BE	1068 050 020	1068 052 100	1068 198 431	4168 027 094	
						AH4 27000BJ	1068 050 042	1068 052 129	1068 198 431	4168 027 094

RANGE ROVER SPORT										
6	4.2L 4196cc 4WD	09-06	All Supercharged	6HP26X	-	TGD 500600	1068 020 070	1068 022 099 *	1068 198 942	4168 028 635
						TGD 500600	1068 020 054	1068 022 082	1068 198 944	4168 028 635
						TGD 500600	1068 020 054	1068 022 067	1068 198 944	4168 028 635
4.4L 4394cc 4WD	09-06	All	6HP26X	-	6H2 270041AA	1068 020 069	1068 022 098 *	1068 198 938	4168 026 608	
					TGD 500560	1068 020 065	1068 022 069	1068 198 938	4168 026 608	
					TGD 500560	1068 020 064	1068 022 096	1068 198 944	4168 026 608	
					TGD 500560	1068 020 044	1068 022 080	1068 198 938	4168 026 608	

* Most current transmission model available

¹ Use Trans. Mfr. Code to find ZF's Transmission Oil recommendations on page iii.

Spd.	Engine & Drive Type	Year	Description	Trans. Mfr. Code ¹	Trans. Code	OEM # / Reman. #	Trans. #	Programmed Trans. #	Replacement Mechatronic	Torque Converter #
------	---------------------	------	-------------	-------------------------------	-------------	------------------	----------	---------------------	-------------------------	--------------------

LAND ROVER**RANGE ROVER SPORT (Continued)**

6	5.0L 5000cc 4WD	13-10	All Supercharged	6HP28X	-	AH4 27000BH	1068 050 020	1068 052 120 *	1068 198 431	4168 027 094
						AH4 27000BG	1068 050 020	1068 052 103	1068 198 431	4168 027 094
						AH4 27000BE	1068 050 020	1068 052 100	1068 198 431	4168 027 094

PORSCHE**911**

4	3.6L 3606cc RWD	98-95	(993) All	4HP22HL	-	993 300 010 EX	1043 050 014 *	-	-	4168 026 221
						993 300 010 EX	1043 050 010	-	-	4168 026 221
		94-90	(964) All	4HP22HL	-	993 300 010 CX	1043 050 008 *	-	-	4168 026 221
						993 300 010 AX	1043 050 006	-	-	4168 026 221
5	3.4L 3400cc RWD	01-99	(996) All Carrera	5HP19HL	-	996 300 011 DX	1060 050 004 *	-	-	4168 025 332
						996 300 011 DX	1060 050 003	-	-	4168 025 332
			(996) All Carrera 4	5HP19HLA	-	996 300 011 MX	1060 060 003 *	-	-	4168 025 127
						996 300 011 MX	1060 060 002	-	-	4168 025 332
	3.6L 3596cc AWD	05-02	(996) All Carrera 4S	5HP19HLA	-	996 300 011 MX	1060 060 003 *	-	-	4168 025 127
						996 300 011 MX	1060 060 002	-	-	4168 025 332

968

4	3.0L 2983cc RWD	95-92	All	4HP18FLE	-	944 300 010 AX	1050 012 004 *	-	-	4168 026 252
---	--------------------	-------	-----	----------	---	----------------	-----------------------	---	---	--------------

BOXSTER

5	2.5L 2480cc RWD	99-97	All	5HP19FL	-	986 300 011 CX	1060 030 053 *	-	-	4168 025 067
						986 300 011 BX	1060 030 031	-	-	4168 025 067
						986 300 011 BX	1060 030 009	-	-	4168 025 067
	2.7L 2687cc RWD	04-00	All	5HP19FL	-	986 300 011 EX	1060 030 050 *	-	-	4168 025 114
3.2L 3179cc RWD	04-00	All	5HP19FL	-	986 300 011 TX	1060 030 030 *	-	-	4168 025 332	

ROLLS ROYCE**SILVER SERAPH**

5	5.4L 5379cc RWD	02-98	All	5HP30	-	PL20365PA	1055 000 027 *	-	-	4168 028 213
---	--------------------	-------	-----	-------	---	-----------	-----------------------	---	---	--------------

VOLKSWAGEN**PASSAT**

5	1.8L 1781cc FWD	05-03	All GL, Turbo	5HP19FL	EZS	01V 300 048 GX	1060 030 072 *	-	-	4168 025 069
						01V 300 048 GX	1060 030 072 *	-	-	4168 025 069
		05-98	All GLS, Turbo	5HP19FL	EFP	01V 300 043 QX	1060 030 049	-	-	4168 025 069
						DDT	01V 300 041 QX	1060 030 013	-	-
	2.0L 1967cc FWD	05-04	All GL TDI	5HP19FL	GMR	01V 300 053 BX	1060 030 106 *	-	-	4168 025 288
	2.8L 2771cc AWD	2005	All GLS 4 Motion w/ Trans Type Plate # 1060 040 065	5HP19FLA	FAS	01V 300 049 MX	1060 040 065 *	-	-	4168 025 046
			All GLS 4 Motion w/ Trans Type Plate # 1060 040 035	5HP19FLA	EKD	01V 300 046 HX	1060 040 035 *	-	-	4168 025 046

* Most current transmission model available

¹ Use Trans. Mfr. Code to find ZF's Transmission Oil recommendations on page iii.

Spd.	Engine & Drive Type	Year	Description	Trans. Mfr. Code ¹	Trans. Code	OEM # / Reman. #	Trans. #	Programmed Trans. #	Replacement Mechatronic	Torque Converter #
------	---------------------	------	-------------	-------------------------------	-------------	------------------	----------	---------------------	-------------------------	--------------------

VOLKSWAGEN**PASSAT (Continued)**

5	2.8L 2771cc AWD	05-01	All GLX 4 Motion w/ Trans Type Plate # 1060 040 065	5HP19FLA	FAS	01V 300 049 MX	1060 040 065 *	-	-	4168 025 046
			All GLX 4 Motion w/ Trans Type Plate # 1060 040 035	5HP19FLA	EKD	01V 300 046 HX	1060 040 035 *	-	-	4168 025 046
		02-01	All GLS 4 Motion w/ Trans Type Plate # 1060 040 065	5HP19FLA	FAS	01V 300 049 MX	1060 040 065 *	-	-	4168 025 046
			All GLS 4 Motion w/ Trans Type Plate # 1060 040 035	5HP19FLA	EKD	01V 300 046 HX	1060 040 035 *	-	-	4168 025 046
2.8L 2771cc FWD	05-00	All GLS & GLX	5HP19FLA	EZZ	01V 300 048 PX	1060 030 088 *	-	-	4168 025 046	
	99-98	All GLS & GLX	5HP19FL	DRD	01V 300 042 TX	1060 030 021 *	-	-	4168 025 063	
4.0L 3998cc AWD	04-02	All W8	5HP19FLA	-	01V 300 052 PX	1060 040 100 *	-	-	4168 025 335	

PHAETON

5	6.0L 5998cc AWD	06-05	All	5HP24A	-	01L 300 042 SX	1058 020 027 *	-	-	4168 026 599
	6.0L 6000cc AWD	2004	All	5HP24A	-	01L 300 042 SX	1058 020 027 *	-	-	4168 026 599
6	4.2L 4172cc AWD	06-10/05	All	6HP19A	-	09L 300 039 HX	1071 040 079	1071 042 300 *	1071 198 986	4168 025 576
						09L 300 039 GX	1071 040 079	1071 042 292	1071 198 986	4168 025 576
						09L 300 039 GX	1071 040 079	1071 042 240	1071 198 986	4168 025 576
						09L 300 039 HX	1071 040 079	1071 042 239	1071 198 986	4168 025 576
		10/05-04	All	6HP19A	-	09L 300 037 T	1071 040 039	1071 042 317 *	1071 198 996	4168 025 576
						09L 300 037 SX	1071 040 039	1071 042 236	1071 198 984	4168 025 576
						09L 300 037 TX	1071 040 039	1071 042 235	1071 198 984	4168 025 576
						09L 300 037 TX	1071 040 039	1071 042 207	1071 198 984	4168 025 576
						09L 300 037 SX	1071 040 039	1071 042 206	1071 198 984	4168 025 576
						09L 300 037 TX	1071 040 039	1071 042 076	1071 198 984	4168 025 576
						09L 300 035 QX	1071 040 015	1071 042 290	1071 198 999	4168 025 576
						09L 300 036 RX	1071 040 015	1071 042 154	1071 198 999	4168 025 576
						09L 300 036 QX	1071 040 015	1071 042 153	1071 198 999	4168 025 576
						09L 300 036 RX	1071 040 015	1071 042 104	1071 198 999	4168 025 576
						09L 300 036 QX	1071 040 015	1071 042 103	1071 198 999	4168 025 576
						09L 300 035 QX	1071 040 015	1071 042 019	1071 198 999	4168 025 576
						09L 300 036 DX	1071 040 015	1071 042 018	1071 198 999	4168 025 576
						09L 300 036 CX	1071 040 010	1071 042 289	1071 198 996	4168 025 576
						09L 300 036 CX	1071 040 010	1071 042 045	1071 198 996	4168 025 576
						09L 300 036 CX	1071 040 010	1071 042 032	1071 198 996	4168 025 576
09L 300 036 CX	1071 040 010	1071 042 028	1071 198 996	4168 025 576						
09L 300 035 PX	1071 040 010	1071 042 027	1071 198 996	4168 025 576						
09L 300 036 CX	1071 040 010	1071 042 017	1071 198 996	4168 025 576						

* Most current transmission model available

¹ Use Trans. Mfr. Code to find ZF's Transmission Oil recommendations on page iii.

Every transmission needs parts.

ZF Kits and Spare Parts Reference Guides.

ZF AUTOMATIC TRANSMISSION

QUICK REFERENCE KIT GUIDE

For a complete kits and parts listing please visit www.zf.com/us/zfparts.

Trans. #	Fiber Clutch Kit	Steel Clutch Kit	Overhaul Kit	Solenoid Kit	Filter Kit	Filter Kit w/ Plastic Pan	Valve Body Kit	5HP30 Molded Rubber Kit	5HP30 Bearing Kit
----------	------------------	------------------	--------------	--------------	------------	---------------------------	----------------	-------------------------	-------------------

4HP-18FLA

1050 020 XXX

1050 020 023	1050 298 048	-	1050 298 025	1050 298 047	-	-	-	-	-
1050 020 030	1050 298 048	-	1050 298 025	1050 298 047	-	-	-	-	-
1050 020 036	1050 298 048	-	1050 298 041	1050 298 047	-	-	-	-	-

4HP-18FLE

1050 012 XXX

1050 012 002	1050 298 048	-	1050 298 042	1050 298 047	-	-	-	-	-
1050 012 004	1050 298 048	-	1050 298 046	1050 298 047	1050 298 037	-	-	-	-
1050 012 014	1050 298 048	-	1050 298 042	1050 298 047	-	-	-	-	-

4HP-22

1043 010 XXX

1043 010 764	-	-	1043 298 105	1043 298 108	-	-	-	-	-
1043 010 765	-	-	1043 298 105	1043 298 108	-	-	-	-	-

4HP-22HL

1043 050 XXX

1043 050 006	-	-	1043 298 099	1043 298 108	-	-	-	-	-
1043 050 008	-	-	1043 298 099	1043 298 108	-	-	-	-	-
1043 050 010	-	-	1043 298 099	1043 298 108	-	-	-	-	-
1043 050 014	-	-	1043 298 099	1043 298 108	-	-	-	-	-

4HP-24

1043 030 XXX

1043 030 065	-	-	1043 298 105	1043 298 108	-	-	-	-	-
1043 030 069	-	-	1043 298 105	1043 298 108	-	-	-	-	-

4HP-24A

1043 040 XXX

1043 040 020	-	-	1043 298 103	1043 298 108	-	-	-	-	-
1043 040 022	-	-	1043 298 103	1043 298 108	-	-	-	-	-
1043 040 025	-	-	1043 298 103	1043 298 108	-	-	-	-	-
1043 040 026	-	-	1043 298 103	1043 298 108	-	-	-	-	-

5HP-18

1056 000 XXX

1056 000 081	1056 298 063	1056 298 064	1056 298 062	-	1056 298 047	-	5HP1 8VBK 01	-	-
1056 000 087	1056 298 063	1056 298 064	1056 298 062	1056 198 021	1056 298 047	-	5HP1 8VBK 01	-	-
1056 000 088	1056 298 063	1056 298 064	1056 298 062	1056 198 021	1056 298 047	-	5HP1 8VBK 01	-	-
1056 000 097	1056 298 063	1056 298 064	1056 298 062	1056 198 021	1056 298 047	-	5HP1 8VBK 01	-	-
1056 000 099	1056 298 063	1056 298 065	1056 298 062	1056 198 021	1056 298 047	-	5HP1 8VBK 01	-	-

Every transmission needs parts.

ZF Kits and Spare Parts Reference Guides.

ZF AUTOMATIC TRANSMISSION

QUICK REFERENCE KIT GUIDE

For a complete kits and parts listing please visit www.zf.com/us/zfparts.

Trans. #	Fiber Clutch Kit	Steel Clutch Kit	Overhaul Kit	Solenoid Kit	Filter Kit	Filter Kit w/ Plastic Pan	Valve Body Kit	5HP30 Molded Rubber Kit	5HP30 Bearing Kit
----------	------------------	------------------	--------------	--------------	------------	---------------------------	----------------	-------------------------	-------------------

5HP-19

1060 000 XXX

1060 000 005	1060 298 023	1060 298 027	1060 298 030	1060 298 033	5HP19FK	-	5HP19VBK	-	-
1060 000 008	1061 298 023	1060 298 027	1060 298 030	1060 298 033	5HP19FK	-	5HP19VBK	-	-
1060 000 009	1062 298 023	1060 298 027	1060 298 030	1060 298 033	5HP19FK	-	5HP19VBK	-	-
1060 000 010	1063 298 023	1060 298 027	1060 298 030	1060 298 033	5HP19FK	-	5HP19VBK	-	-
1060 000 011	1064 298 023	1060 298 027	1060 298 030	1060 298 033	5HP19FK	-	5HP19VBK	-	-

5HP-19FL

1060 030 XXX

1060 030 005	1060 298 024	1060 298 026	1060 298 032	1060 298 033	5HP19FKFL	-	sold separately ³	-	-
1060 030 006	1060 298 024	1060 298 026	1060 298 032	1060 298 033	5HP19FKFL	-	sold separately ³	-	-
1060 030 009	1060 298 024	1060 298 026	1060 298 032	1060 298 035	5HP19FKFL	-	sold separately ³	-	-
1060 030 013	1060 298 024	1060 298 026	1060 298 032	1060 298 033	5HP19FKFL	-	sold separately ³	-	-
1060 030 021	1060 298 024	1060 298 026	1060 298 032	1060 298 033	5HP19FKFL	-	sold separately ³	-	-
1060 030 027	1060 298 024	1060 298 026	1060 298 032	1060 298 033	5HP19FKFL	-	sold separately ³	-	-
1060 030 030	1060 298 024	1060 298 026	1060 298 032	1060 298 034	5HP19FKFL	-	sold separately ³	-	-
1060 030 031	1060 298 024	1060 298 026	1060 298 032	1060 298 035	5HP19FKFL	-	sold separately ³	-	-
1060 030 049	1060 298 022	1060 298 025	1060 298 032	1060 298 033	5HP19FKFL	-	sold separately ³	-	-
1060 030 050	1060 298 024	1060 298 026	1060 298 032	1060 298 034	5HP19FKFL	-	sold separately ³	-	-
1060 030 053	1060 298 024	1060 298 026	1060 298 032	1060 298 034	5HP19FKFL	-	sold separately ³	-	-
1060 030 059	1060 298 022	1060 298 025	1060 298 032	1060 298 033	5HP19FKFL	-	sold separately ³	-	-
1060 030 072	1060 298 022	1060 298 025	1060 298 032	1060 298 033	5HP19FKFL	-	sold separately ³	-	-
1060 030 088	1060 298 022	1060 298 025	1060 298 032	1060 298 033	5HP19FKFL	-	sold separately ³	-	-
1060 030 106	1060 298 022	1060 298 026	1060 298 032	1060 298 033	5HP19FKFL	-	sold separately ³	-	-

5HP-19FLA

1060 040 XXX

1060 040 002	1060 298 024	1060 298 026	1060 298 031	1060 298 035	5HP19FKFL	-	sold separately ³	-	-
1060 040 012	1060 298 024	1060 298 026	1060 298 031	1060 298 035	5HP19FKFL	-	sold separately ³	-	-
1060 040 013	1060 298 024	1060 298 026	1060 298 031	1060 298 035	5HP19FKFL	-	sold separately ³	-	-
1060 040 018	1060 298 024	1060 298 026	1060 298 031	1060 298 035	5HP19FKFL	-	sold separately ³	-	-
1060 040 030	1060 298 022	1060 298 025	1060 298 031	1060 298 033	5HP19FKFL	-	sold separately ³	-	-
1060 040 035	1060 298 022	1060 298 025	1060 298 031	1060 298 033	5HP19FKFL	-	sold separately ³	-	-
1060 040 036	1060 298 024	1060 298 026	1060 298 031	1060 298 035	5HP19FKFL	-	sold separately ³	-	-
1060 040 063	1060 298 022	1060 298 026	1060 298 031	1060 298 033	5HP19FKFL	-	sold separately ³	-	-
1060 040 044	1060 298 022	1060 298 026	1060 298 031	1060 298 033	5HP19FKFL	-	sold separately ³	-	-
1060 040 053	1060 298 022	1060 298 026	1060 298 031	1060 298 033	5HP19FKFL	-	sold separately ³	-	-
1060 040 054	1060 298 022	1060 298 025	1060 298 031	1060 298 033	5HP19FKFL	-	sold separately ³	-	-
1060 040 065	1060 298 022	1060 298 025	1060 298 031	1060 298 033	5HP19FKFL	-	sold separately ³	-	-
1060 040 073	1060 298 022	1060 298 025	1060 298 031	1060 298 033	5HP19FKFL	-	sold separately ³	-	-
1060 040 075	1060 298 022	1060 298 026	1060 298 031	1060 298 033	5HP19FKFL	-	sold separately ³	-	-
1060 040 087	1060 298 022	1060 298 026	1060 298 031	1060 298 033	5HP19FKFL	-	sold separately ³	-	-

³All parts sold separately available in ZF Parts Transmission catalog online at www.zf.com/us/zfparts.

Every transmission needs parts.

ZF Kits and Spare Parts Reference Guides.

ZF AUTOMATIC TRANSMISSION

QUICK REFERENCE KIT GUIDE

For a complete kits and parts listing please visit www.zf.com/us/zfparts.

Trans. #	Fiber Clutch Kit	Steel Clutch Kit	Overhaul Kit	Solenoid Kit	Filter Kit	Filter Kit w/ Plastic Pan	Valve Body Kit	5HP30 Molded Rubber Kit	5HP30 Bearing Kit
----------	------------------	------------------	--------------	--------------	------------	---------------------------	----------------	-------------------------	-------------------

5HP-19FLA

1060 040 XXX (Continued)

1060 040 093	1060 298 022	1060 298 026	1060 298 031	1060 298 033	5HP19FKFL	-	sold separately ³	-	-
1060 040 100	1060 298 022	1060 298 026	1060 298 031	1060 298 033	5HP19FKFL	-	sold separately ³	-	-
1060 040 101	1060 298 022	1060 298 025	1060 298 031	1060 298 033	5HP19FKFL	-	sold separately ³	-	-
1060 040 103	1060 298 022	1060 298 026	1060 298 031	1060 298 033	5HP19FKFL	-	sold separately ³	-	-

5HP-19HL

1060 050 XXX

1060 050 003	1060 298 024	1060 298 026	-	1060 298 034	-	-	-	-	-
1060 050 004	1060 298 024	1060 298 026	-	1060 298 034	-	-	-	-	-

5HP-19HLA

1060 060 XXX

1060 060 002	1060 298 024	1060 298 026	-	1060 298 034	-	-	-	-	-
1060 060 003	1060 298 024	1060 298 026	-	1060 298 034	-	-	-	-	-

5HP-24

1058 000 XXX

1058 000 005	1058 298 014	1058 298 016	1058 298 022	1060 298 035	5HP24FK	-	5HP24VBK	-	-
1058 000 009	1058 298 014	1058 298 016	1058 298 022	1060 298 035	5HP24FK	-	5HP24VBK	-	-
1058 000 013	1058 298 015	1058 298 017	1058 298 022	1060 298 035	5HP24FK	-	5HP24VBK	-	-
1058 000 015	1058 298 015	1058 298 017	1058 298 022	1060 298 035	5HP24FK	-	5HP24VBK	-	-
1058 000 016	1058 298 015	1058 298 017	1058 298 022	1060 298 035	5HP24FK	-	5HP24VBK	-	-
1058 000 021	1058 298 015	1058 298 017	1058 298 022	1060 298 034	5HP24FK	-	5HP24VBK	-	-
1058 000 022	1058 298 015	1058 298 017	1058 298 022	1060 298 034	5HP24FK	-	5HP24VBK	-	-
1058 000 026	1058 298 015	1058 298 017	1058 298 022	1060 298 034	5HP24FK	-	5HP24VBK	-	-
1058 000 029	1058 298 015	1058 298 017	1058 298 022	1060 298 034	5HP24FK	-	5HP24VBK	-	-
1058 000 032	1058 298 015	1058 298 017	1058 298 022	1060 298 034	5HP24FK	-	5HP24VBK	-	-
1058 000 034	1058 298 015	1058 298 017	1058 298 022	1060 298 034	5HP24FK	-	5HP24VBK	-	-
1058 000 035	1058 298 015	1058 298 017	1058 298 022	1060 298 034	5HP24FK	-	5HP24VBK	-	-

5HP-24A

1058 020 XXX

1058 020 004	1058 298 014	1058 298 016	1058 298 023	1060 298 034	5HP24FKA	-	sold separately ³	-	-
1058 020 007	1058 298 014	1058 298 016	1058 298 023	1060 298 034	5HP24FKA	-	sold separately ³	-	-
1058 020 009	1058 298 015	1058 298 017	1058 298 023	1060 298 034	5HP24FKA	-	sold separately ³	-	-
1058 020 014	1058 298 015	1058 298 017	1058 298 023	1060 298 034 ²	5HP24FKA	-	sold separately ³	-	-
1058 020 015	1058 298 015	1058 298 017	1058 298 023	1060 298 034 ²	5HP24FKA	-	sold separately ³	-	-
1058 020 018	1058 298 015	1058 298 017	1058 298 023	1060 298 034 ²	5HP24FKA	-	sold separately ³	-	-
1058 020 021	1058 298 015	1058 298 017	1058 298 023	1060 298 034 ²	5HP24FKA	-	sold separately ³	-	-
1058 020 027	1058 298 015	1058 298 017	1058 298 023	1060 298 034	5HP24FKA	-	sold separately ³	-	-

³All parts sold separately available in ZF Parts Transmission catalog online at www.zf.com/us/zfparts.

Every transmission needs parts.

ZF Kits and Spare Parts Reference Guides.

ZF AUTOMATIC TRANSMISSION

QUICK REFERENCE KIT GUIDE

For a complete kits and parts listing please visit www.zf.com/us/zfparts.

Trans. #	Fiber Clutch Kit	Steel Clutch Kit	Overhaul Kit	Solenoid Kit	Filter Kit	Filter Kit w/ Plastic Pan	Valve Body Kit	5HP30 Molded Rubber Kit	5HP30 Bearing Kit
----------	------------------	------------------	--------------	--------------	------------	---------------------------	----------------	-------------------------	-------------------

5HP-24A

1058 020 XXX (Continued)

1058 020 029	1058 298 015	1058 298 017	1058 298 023	1060 298 034 ²	5HP24FKA	-	sold separately ³	-	-
1058 020 030	1058 298 015	1058 298 017	1058 298 023	1060 298 034 ²	5HP24FKA	-	sold separately ³	-	-
1058 020 031	1058 298 015	1058 298 017	1058 298 023	1060 298 034 ²	5HP24FKA	-	sold separately ³	-	-
1058 020 033	1058 298 015	1058 298 017	1058 298 023	1060 298 034 ²	5HP24FKA	-	sold separately ³	-	-
1058 020 035	1058 298 015	1058 298 017	1058 298 023	1060 298 034	5HP24FKA	-	sold separately ³	-	-

5HP-30

1055 000 XXX

1055 000 010	1055 298 024	1055 298 027	1055 298 019	1055 298 029	5HP30FK	-	5HP30VBK	1055 298 030	5HP30BRGK
1055 000 011	1055 298 024	1055 298 027	1055 298 019	1055 298 029	5HP30FK	-	5HP30VBK	1055 298 030	5HP30BRGK
1055 000 017	1055 298 025	1055 298 027	1055 298 019	1055 298 028	5HP30FK	-	5HP30VBK	1055 298 030	5HP30BRGK
1055 000 026	1055 298 026	1055 298 027	1055 298 019	1055 298 028	5HP30FK	-	5HP30VBK	1055 298 030	5HP30BRGK
1055 000 027	1055 298 025	1055 298 027	1055 298 019	1055 298 028	5HP30FK	-	5HP30VBK	1055 298 030	5HP30BRGK
1055 000 028	1055 298 025	1055 298 027	1055 298 019	1055 298 028	5HP30FK	-	5HP30VBK	1055 298 030	5HP30BRGK
1055 000 029	1055 298 024	1055 298 027	1055 298 019	1055 298 029	5HP30FK	-	5HP30VBK	1055 298 030	5HP30BRGK
1055 000 030	1055 298 024	1055 298 027	1055 298 019	1055 298 029	5HP30FK	-	5HP30VBK	1055 298 030	5HP30BRGK
1055 000 031	1055 298 024	1055 298 027	1055 298 019	1055 298 029	5HP30FK	-	5HP30VBK	1055 298 030	5HP30BRGK
1055 000 032	1055 298 025	1055 298 027	1055 298 019	1055 298 028	5HP30FK	-	5HP30VBK	1055 298 030	5HP30BRGK
1055 000 039	1055 298 025	1055 298 027	1055 298 019	1055 298 028	5HP30FK	-	5HP30VBK	1055 298 030	5HP30BRGK
1055 000 040	1055 298 025	1055 298 027	1055 298 019	1055 298 028	5HP30FK	-	5HP30VBK	1055 298 030	5HP30BRGK
1055 000 046	1055 298 025	1055 298 027	1055 298 019	1055 298 028	5HP30FK	-	5HP30VBK	1055 298 030	5HP30BRGK

6HP-19

1071 010 XXX

1071 010 005	-	-	1071 298 007	1068 298 044	-	1071 298 031	-	-	-
1071 010 007	-	-	1071 298 007	1068 298 044	-	1071 298 031	-	-	-
1071 010 027	-	-	1076 298 007	1068 298 044	-	1071 298 031	-	-	-
1071 010 029	-	-	1078 298 007	1068 298 044	-	1071 298 031	-	-	-

6HP-19A

1071 040 XXX

1071 040 009	-	-	1071 298 010	1068 298 044	-	-	-	-	-
1071 040 010	-	-	1071 298 010	1068 298 044	-	-	-	-	-
1071 040 013	-	-	1071 298 010	1068 298 044	-	-	-	-	-
1071 040 015	-	-	1071 298 010	1068 298 044	-	-	-	-	-
1071 040 050	-	-	1071 298 010	1068 298 044	-	-	-	-	-
1071 040 072	-	-	1071 298 010	1068 298 044	-	-	-	-	-
1071 040 090	-	-	1071 298 010	1068 298 044	-	-	-	-	-
1071 040 021	-	-	1071 298 010	1068 298 044	-	-	-	-	-
1071 040 027	-	-	1071 298 010	1068 298 044	-	-	-	-	-

²Includes extra Solenoid.

³All parts sold separately available in ZF Parts Transmission catalog online at www.zf.com/us/zfparts.

Every transmission needs parts.

ZF Kits and Spare Parts Reference Guides.

ZF AUTOMATIC TRANSMISSION

QUICK REFERENCE KIT GUIDE

For a complete kits and parts listing please visit www.zf.com/us/zfparts.

Trans. #	Fiber Clutch Kit	Steel Clutch Kit	Overhaul Kit	Solenoid Kit	Filter Kit	Filter Kit w/ Plastic Pan	Valve Body Kit	5HP30 Molded Rubber Kit	5HP30 Bearing Kit
----------	------------------	------------------	--------------	--------------	------------	---------------------------	----------------	-------------------------	-------------------

6HP-19A

1071 040 XXX (Continued)

1071 040 052	-	-	1071 298 010	1068 298 044	-	-	-	-	-
1071 040 033	-	-	1071 298 010	1068 298 044	-	-	-	-	-
1071 040 028	-	-	1071 298 010	1068 298 044	-	-	-	-	-
1071 040 032	-	-	1071 298 010	1068 298 044	-	-	-	-	-
1071 040 065	-	-	1071 298 010	1068 298 044	-	-	-	-	-
1071 040 035	-	-	1071 298 010	1068 298 044	-	-	-	-	-
1071 040 039	-	-	1071 298 010	1068 298 044	-	-	-	-	-
1071 040 066	-	-	1071 298 010	1068 298 044	-	-	-	-	-
1071 040 040	-	-	1071 298 010	1068 298 044	-	-	-	-	-
1071 040 051	-	-	1071 298 010	1068 298 044	-	-	-	-	-
1071 040 067	-	-	1071 298 010	1068 298 044	-	-	-	-	-
1071 040 073	-	-	1071 298 010	1068 298 044	-	-	-	-	-
1071 040 079	-	-	1071 298 010	1068 298 044	-	-	-	-	-
1071 040 084	-	-	1071 298 010	1068 298 044	-	-	-	-	-
1071 040 087	-	-	1071 298 010	1068 298 044	-	-	-	-	-
1071 040 101	-	-	1071 298 010	1068 298 044	-	-	-	-	-
1071 040 102	-	-	1071 298 010	1068 298 044	-	-	-	-	-
1071 040 111	-	-	1071 298 010	1068 298 044	-	-	-	-	-

6HP-19X

1071 020 XXX

1071 020 006	-	-	1071 298 007	1068 298 044	1071 298 031	-	-	-	-
1071 020 007	-	-	1071 298 007	1068 298 044	1071 298 031	-	-	-	-
1071 020 008	-	-	1071 298 007	1068 298 045	1071 298 031	-	-	-	-
1071 020 009	-	-	1071 298 007	1068 298 045	1071 298 031	-	-	-	-

6HP-21

1071 030 XXX

1071 030 003	-	-	1071 298 007	1068 298 046	-	1071 298 031	-	-	-
1071 030 018	-	-	1071 298 007	1068 298 046	-	1073 298 031	-	-	-
1071 030 019	-	-	1071 298 007	1071 298 047	-	1074 298 031	-	-	-
1071 030 021	-	-	1071 298 007	1071 298 047	-	1076 298 031	-	-	-
1071 030 026	-	-	1074 298 007	1068 298 046	-	1079 298 031	-	-	-
1071 030 049	-	-	1071 298 007	1071 298 047	-	1071 298 031	-	-	-
1071 030 063	-	-	1071 298 007	1071 298 047	-	1071 298 031	-	-	-
1071 030 071	-	-	1071 298 007	1071 298 047	-	1071 298 031	-	-	-
1071 030 072	-	-	1071 298 007	1068 298 046	-	1071 298 031	-	-	-

Every transmission needs parts.

ZF Kits and Spare Parts Reference Guides.

ZF AUTOMATIC TRANSMISSION

QUICK REFERENCE KIT GUIDE

For a complete kits and parts listing please visit www.zf.com/us/zfparts.

Trans. #	Fiber Clutch Kit	Steel Clutch Kit	Overhaul Kit	Solenoid Kit	Filter Kit	Filter Kit w/ Plastic Pan	Valve Body Kit	5HP30 Molded Rubber Kit	5HP30 Bearing Kit
----------	------------------	------------------	--------------	--------------	------------	---------------------------	----------------	-------------------------	-------------------

6HP-21X

1071 050 XXX

1071 050 001	-	-	1071 298 007	1068 298 047	1071 298 031	-	-	-	-
1071 050 006	-	-	1071 298 007	1068 298 046	1071 298 031	-	-	-	-
1071 050 008	-	-	1071 298 007	1068 298 047	1071 298 031	-	-	-	-
1071 050 016	-	-	1071 298 007	1068 298 047	1071 298 031	-	-	-	-
1071 050 017	-	-	1071 298 007	1068 298 046	1071 298 031	-	-	-	-

6HP-26

1068 010 XXX

1068 010 030	-	-	1068 298 051	1068 298 044	-	1068 298 075	-	-	-
1068 010 031	-	-	1068 298 051	1068 298 044	-	1068 298 075	-	-	-
1068 010 032	-	-	1068 298 051	1068 298 044	-	1068 298 075	-	-	-
1068 010 036	-	-	1068 298 051	1068 298 044	-	1068 298 075	-	-	-
1068 010 043	-	-	1068 298 051	1068 298 044	-	1068 298 075	-	-	-
1068 010 044	-	-	1068 298 051	1068 298 044	-	1068 298 075	-	-	-
1068 010 045	-	-	1068 298 051	1068 298 044	-	1068 298 075	-	-	-
1068 010 051	-	-	1068 298 051	1068 298 043	-	1068 298 075	-	-	-
1068 010 054	-	-	1068 298 051	1068 298 043	-	1068 298 075	-	-	-
1068 010 057	-	-	1068 298 051	1068 298 043	-	1068 298 075	-	-	-
1068 010 060	-	-	1068 298 051	1068 298 043	-	1068 298 075	-	-	-
1068 010 062	-	-	1068 298 051	1068 298 043	-	1068 298 075	-	-	-
1068 010 064	-	-	1068 298 051	1068 298 044	-	1068 298 075	-	-	-
1068 010 065	-	-	1068 298 051	1068 298 044	-	1068 298 075	-	-	-
1068 010 066	-	-	1068 298 051	1068 298 044	-	1068 298 075	-	-	-
1068 010 070	-	-	1068 298 051	1068 298 044	-	1068 298 075	-	-	-
1068 010 071	-	-	1068 298 051	1068 298 044	-	1068 298 075	-	-	-
1068 010 075	-	-	1068 298 051	1068 298 044	-	1068 298 075	-	-	-
1068 010 076	-	-	1068 298 051	1068 298 044	-	1068 298 075	-	-	-
1068 010 079	-	-	1068 298 051	1068 298 044	-	1068 298 075	-	-	-
1068 010 083	-	-	1068 298 051	1068 298 043	-	1068 298 075	-	-	-
1068 010 092	-	-	1068 298 051	1068 298 043	-	1068 298 075	-	-	-
1068 010 093	-	-	1068 298 051	1068 298 044	-	1068 298 075	-	-	-
1068 010 097	-	-	1068 298 051	1068 298 043	-	1068 298 075	-	-	-
1068 010 100	-	-	1068 298 051	1068 298 044	-	1068 298 075	-	-	-
1068 010 101	-	-	1068 298 051	1068 298 044	-	1068 298 075	-	-	-
1068 010 102	-	-	1068 298 051	1068 298 044	-	1068 298 075	-	-	-
1068 010 106	-	-	1068 298 051	1068 298 043	-	1068 298 075	-	-	-
1068 010 113	-	-	1068 298 051	1068 298 044	-	1068 298 075	-	-	-
1068 010 114	-	-	1068 298 051	1068 298 044	-	1068 298 075	-	-	-
1068 010 115	-	-	1068 298 051	1068 298 044	-	1068 298 075	-	-	-
1068 010 123	-	-	1068 298 051	1068 298 043	-	1068 298 075	-	-	-
1068 010 125	-	-	1068 298 051	1068 298 043	-	1068 298 075	-	-	-
1068 010 127	-	-	1068 298 051	1068 298 043	-	1068 298 075	-	-	-
1068 010 130	-	-	1068 298 051	1068 298 044	-	1068 298 075	-	-	-
1068 010 134	-	-	1068 298 051	1068 298 043	-	1068 298 075	-	-	-

Every transmission needs parts.

ZF Kits and Spare Parts Reference Guides.

ZF AUTOMATIC TRANSMISSION

QUICK REFERENCE KIT GUIDE

For a complete kits and parts listing please visit www.zf.com/us/zfparts.

Trans. #	Fiber Clutch Kit	Steel Clutch Kit	Overhaul Kit	Solenoid Kit	Filter Kit	Filter Kit w/ Plastic Pan	Valve Body Kit	5HP30 Molded Rubber Kit	5HP30 Bearing Kit
----------	------------------	------------------	--------------	--------------	------------	---------------------------	----------------	-------------------------	-------------------

6HP-26

1068 010 XXX (Continued)

1068 010 136	-	-	1068 298 051	1068 298 044	-	1068 298 075	-	-	-
1068 010 151	-	-	1068 298 051	1068 298 044	-	1068 298 075	-	-	-
1068 010 154	-	-	1068 298 051	1068 298 044	-	1068 298 075	-	-	-
1068 010 160	-	-	1068 298 051	1068 298 044	-	1068 298 075	-	-	-
1068 010 162	-	-	1068 298 051	1068 298 044	-	1068 298 075	-	-	-
1068 010 163	-	-	1068 298 051	1068 298 044	-	1068 298 075	-	-	-
1068 010 164	-	-	1068 298 051	1068 298 044	-	1068 298 075	-	-	-
1068 010 166	-	-	1068 298 051	1068 298 043	-	1068 298 075	-	-	-
1068 010 168	-	-	1068 298 051	1068 298 043	-	1068 298 075	-	-	-
1068 010 171	-	-	1068 298 051	1068 298 043	-	1068 298 075	-	-	-
1068 010 185	-	-	1068 298 051	1068 298 044	-	1068 298 075	-	-	-
1068 010 193	-	-	1068 298 051	1068 298 043	-	1068 298 075	-	-	-
1068 010 194	-	-	1068 298 051	1068 298 043	-	1068 298 075	-	-	-
1068 010 213	-	-	1068 298 051	1068 298 043	-	1068 298 075	-	-	-

6HP-26A61

1068 030 XXX

1068 030 014	-	-	1068 298 052	1068 298 044	-	-	-	-	-
1068 030 027	-	-	1068 298 052	1068 298 044	-	-	-	-	-
1068 030 031	-	-	1068 298 052	1068 298 044	-	-	-	-	-
1068 030 036	-	-	1068 298 052	1068 298 044	-	-	-	-	-
1068 030 040	-	-	1068 298 052	1068 298 045	-	-	-	-	-
1068 030 044	-	-	1068 298 052	1068 298 045	-	-	-	-	-
1068 030 058	-	-	1068 298 052	1068 298 045	-	-	-	-	-
1068 030 059	-	-	1068 298 052	1068 298 045	-	-	-	-	-
1068 030 061	-	-	1068 298 052	1068 298 045	-	-	-	-	-
1068 030 064	-	-	1068 298 052	1068 298 045	-	-	-	-	-
1068 030 068	-	-	1068 298 052	1068 298 045	-	-	-	-	-
1068 030 070	-	-	1068 298 052	1068 298 045	-	-	-	-	-
1068 030 074	-	-	1068 298 052	1068 298 045	-	-	-	-	-
1068 030 075	-	-	1068 298 052	1068 298 045	-	-	-	-	-
1068 030 077	-	-	1068 298 052	1068 298 045	-	-	-	-	-
1068 030 079	-	-	1068 298 052	1068 298 045	-	-	-	-	-
1068 030 081	-	-	1068 298 052	1068 298 045	-	-	-	-	-
1068 030 083	-	-	1068 298 052	1068 298 045	-	-	-	-	-

6HP-26X

1068 020 XXX

1068 020 014	-	-	1068 298 030	1068 298 044	-	1068 298 075	-	-	-
1068 020 018	-	-	1068 298 030	1068 298 044	-	1068 298 075	-	-	-
1068 020 043	-	-	1068 298 030	1068 298 044	-	1068 298 075	-	-	-
1068 020 044	-	-	1068 298 030	1068 298 044	-	1068 298 075	-	-	-
1068 020 051	-	-	1068 298 030	1068 298 044	-	1068 298 075	-	-	-

Every transmission needs parts.

ZF Kits and Spare Parts Reference Guides.

ZF AUTOMATIC TRANSMISSION

QUICK REFERENCE KIT GUIDE

For a complete kits and parts listing please visit www.zf.com/us/zfparts.

Trans. #	Fiber Clutch Kit	Steel Clutch Kit	Overhaul Kit	Solenoid Kit	Filter Kit	Filter Kit w/ Plastic Pan	Valve Body Kit	5HP30 Molded Rubber Kit	5HP30 Bearing Kit
----------	------------------	------------------	--------------	--------------	------------	---------------------------	----------------	-------------------------	-------------------

6HP-26X

1068 020 XXX (Continued)

1068 020 052	-	-	1068 298 030	1068 298 044	-	1068 298 075	-	-	-
1068 020 054	-	-	1068 298 030	1068 298 044	-	1068 298 075	-	-	-
1068 020 064	-	-	1068 298 030	1068 298 044	-	1068 298 075	-	-	-
1068 020 065	-	-	1068 298 030	1068 298 044	-	1068 298 075	-	-	-
1068 020 066	-	-	1068 298 030	1068 298 044	-	1068 298 075	-	-	-
1068 020 069	-	-	1068 298 030	1068 298 044	-	1068 298 075	-	-	-
1068 020 070	-	-	1068 298 030	1068 298 044	-	1068 298 075	-	-	-

6HP-28

1068 040 XXX

1068 040 009	-	-	1068 298 051	1068 298 047	1068 298 075	-	-	-	-
1068 040 021	-	-	1068 298 051	1068 298 046	1068 298 075	-	-	-	-
1068 040 024	-	-	1068 298 051	1068 298 047	1068 298 075	-	-	-	-
1068 040 032	-	-	1068 298 051	1068 298 047	1068 298 075	-	-	-	-
1068 040 035	-	-	1068 298 051	1068 298 047	1068 298 075	-	-	-	-
1068 040 036	-	-	1068 298 051	1068 298 047	1068 298 075	-	-	-	-
1068 040 047	-	-	1068 298 051	1068 298 047	1068 298 075	-	-	-	-
1068 040 057	-	-	1068 298 051	1068 298 047	1068 298 075	-	-	-	-
1068 040 061	-	-	1068 298 051	1068 298 047	1068 298 075	-	-	-	-
1068 040 062	-	-	1068 298 051	1068 298 047	1068 298 075	-	-	-	-
1068 040 063	-	-	1068 298 051	1068 298 047	1068 298 075	-	-	-	-

6HP-28AF

1084 030 XXX

1084 030 007	-	-	-	1068 298 046	-	-	-	-	-
1084 030 013	-	-	-	1068 298 046	-	-	-	-	-
1084 030 014	-	-	-	1068 298 046	-	-	-	-	-
1084 030 015	-	-	-	1068 298 046	-	-	-	-	-
1084 030 016	-	-	-	1068 298 046	-	-	-	-	-
1084 030 018	-	-	-	1068 298 046	-	-	-	-	-
1084 030 019	-	-	-	1068 298 046	-	-	-	-	-
1084 030 020	-	-	-	1068 298 046	-	-	-	-	-
1084 030 022	-	-	-	1068 298 046	-	-	-	-	-
1084 030 023	-	-	-	1068 298 046	-	-	-	-	-

6HP-28X

1068 050 XXX

1068 050 001	-	-	1068 298 030	1068 298 047	-	1068 298 075	-	-	-
1068 050 019	-	-	1068 298 030	1068 298 046	-	1068 298 075	-	-	-
1068 050 020	-	-	1068 298 030	1068 298 046	-	1068 298 075	-	-	-
1068 050 034	-	-	1068 298 051	1068 298 047	-	1068 298 075	-	-	-
1068 050 035	-	-	1068 298 051	1068 298 047	-	1068 298 075	-	-	-

Every transmission needs parts.

ZF Kits and Spare Parts Reference Guides.

ZF AUTOMATIC TRANSMISSION

QUICK REFERENCE KIT GUIDE

For a complete kits and parts listing please visit www.zf.com/us/zfparts.

Trans. #	Fiber Clutch Kit	Steel Clutch Kit	Overhaul Kit	Solenoid Kit	Filter Kit	Filter Kit w/ Plastic Pan	Valve Body Kit	5HP30 Molded Rubber Kit	5HP30 Bearing Kit
----------	------------------	------------------	--------------	--------------	------------	---------------------------	----------------	-------------------------	-------------------

6HP-28X

1068 050 XXX (Continued)

1068 050 041	-	-	1068 298 051	1068 298 046	-	1068 298 075	-	-	-
1068 050 042	-	-	1068 298 030	1068 298 046	-	1068 298 075	-	-	-
1068 050 046	-	-	1068 298 051	1068 298 047	-	1068 298 075	-	-	-
1068 050 048	-	-	1068 298 051	1068 298 047	-	1068 298 075	-	-	-

8HP-45

1090 010 XXX

1090 010 002	-	-	1090 298 113	-	1087 298 053	-	-	-	-
1090 010 008	-	-	1090 298 113	-	1087 298 053	-	-	-	-

8HP-45HIS

1090 014 XXX

1090 014 004	-	-	1090 298 113	-	1087 298 053	-	-	-	-
1090 014 011	-	-	1090 298 113	-	1087 298 053	-	-	-	-

8HP-45X

1090 020 XXX

1090 020 012	-	-	1090 298 113	-	1087 298 053	-	-	-	-
1090 020 013	-	-	1090 298 113	-	1087 298 053	-	-	-	-
1090 020 023	-	-	1090 298 113	-	1087 298 053	-	-	-	-
1090 020 029	-	-	1090 298 113	-	1087 298 053	-	-	-	-

8HP-45XHIS

1090 024 XXX

1090 024 012	-	-	1090 298 113	-	1087 298 053	-	-	-	-
--------------	---	---	--------------	---	--------------	---	---	---	---

8HP-55A

1087 030 XXX

1087 030 014	-	-	1087 298 302	-	1087 298 012	-	-	-	-
1087 030 015	-	-	1087 298 302	-	1087 298 012	-	-	-	-
1087 030 018	-	-	1087 298 302	-	1087 298 012	-	-	-	-
1087 030 019	-	-	1087 298 302	-	1087 298 012	-	-	-	-
1087 030 021	-	-	1087 298 302	-	1087 298 012	-	-	-	-
1087 030 023	-	-	1087 298 302	-	1087 298 012	-	-	-	-
1087 030 030	-	-	1087 298 302	-	1087 298 012	-	-	-	-
1087 030 040	-	-	1087 298 302	-	1087 298 012	-	-	-	-

8HP-70

1087 010 XXX

1087 010 002	-	-	1087 298 282	-	1087 298 247	-	-	-	-
1087 010 007	-	-	1087 298 282	-	1087 298 247	-	-	-	-

Every transmission needs parts.

ZF Kits and Spare Parts Reference Guides.

ZF AUTOMATIC TRANSMISSION

QUICK REFERENCE KIT GUIDE

For a complete kits and parts listing please visit www.zf.com/us/zfparts.

Trans. #	Fiber Clutch Kit	Steel Clutch Kit	Overhaul Kit	Solenoid Kit	Filter Kit	Filter Kit w/ Plastic Pan	Valve Body Kit	5HP30 Molded Rubber Kit	5HP30 Bearing Kit
----------	------------------	------------------	--------------	--------------	------------	---------------------------	----------------	-------------------------	-------------------

8HP-70H

1087 040 XXX

1087 040 002	-	-	1087 298 282	-	1087 298 247	-	-	-	-
1087 040 003	-	-	1087 298 282	-	1087 298 247	-	-	-	-

8HP-70X

1087 020 XXX

1087 020 007	-	-	1087 298 282	-	1087 298 247	-	-	-	-
1087 020 013	-	-	1087 298 282	-	1087 298 247	-	-	-	-
1087 020 014	-	-	1087 298 282	-	1087 298 247	-	-	-	-

ZF Parts

ZF Services, LLC

777 Hickory Hill Drive
Vernon Hills, IL 60061
Phone: 800-321-0784

www.zf.com/us/zfparts



The purpose of this catalog is to furnish the customers of ZF Services, LLC with as complete a listing of their parts requirements as possible. ZF Services cannot assume any responsibility for possible errors in listings, applications or interchanges.

All references by ZF Services to the original manufacturer trade names and part numbers are for identification purposes only. ©2014 ZF Services, LLC, All Rights Reserved.

PC-RE-10152014