

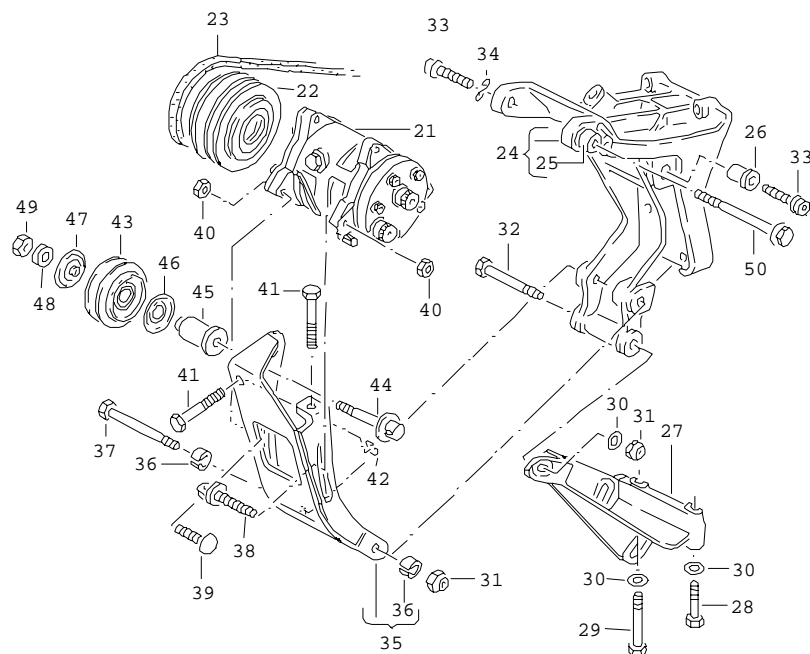
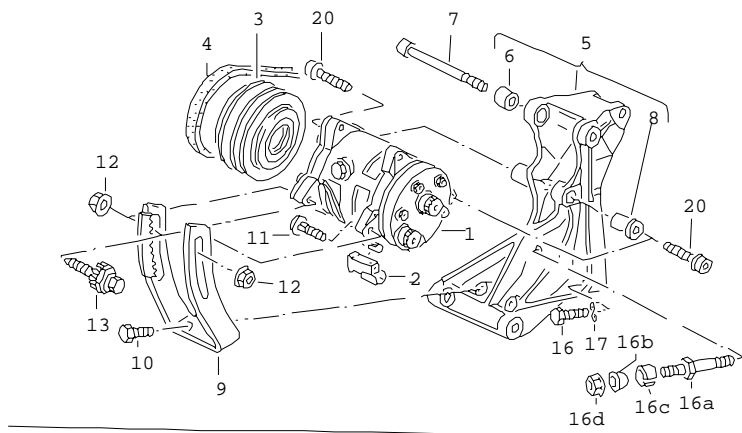




Model	Year	MG	SG	Illustration	Restrictions	Update	11:32	05.11.2005		ETKA	
PA	92	2	60	58-00		450					



Pos	Part Number	Name	Remarks	Qty	Model
		refrigerant compressor connecting and mounting parts for compressor			KR, AAM, ABS, EZ, 9A, ABN
		F for refrigerant: >> 31-N-400 000*	R12		
(1)	357 820 803 C	refrigerant compressor with electro-magnetic coupling	SD 709	1	
2	171 971 934	flat terminal pin housing	2 pin	1	
3	357 820 811	electro-magnetic coupling		1	
4	068 260 849 G	v-belt	12,5X947MM	1	
5	027 260 881	bracket - compressor		1	
(5)	051 260 881 B	bracket for alternator for models with air conditioner and power steering use if required:	049 903 103 B	1	KR, 9A
7	N 044 759 1	allen key head bolt	M8X95	1	
8	037 260 921	threaded bush		1	
9	027 260 917 A	angled bracket		1	
10	N 010 239 11	hexagonal head bolt	M8X18	2	
11	N 100 366 01	flat round head bolt	M8X32	1	
12	N 011 008 30	hexagonal nut	M8	4	
13	034 903 555 B	bolt		1	
16A	051 260 821	stud with hex. hd.	M8X54/M8X23	2	KR, 9A
(16A)	051 260 821 A	stud with hex. hd.	M8X38/M8X34	2	KR, 9A
16B	051 260 907	cotter, split		1	KR, 9A
16C	051 260 909	spring sleeve		1	KR, 9A
16D	N 900 744 01	hexagon nut, self-locking	M8	4	
17	N 012 229 3	spring washer	A8X15X0,5	2	
20	N 014 723 6	allen key head bolt	M10X30	2	
-	357 298 012	attachment parts for electro- magnetic coupling	1/2=20UNF	1	

Model	Year	MG	SG	Illustration	Restrictions	Update	11:32	05.11.2005		ETKA	
PA	92	2	60	58-00		450					

Pos	Part Number	Name	Remarks	Qty	Model	Pos	Part Number	Name	Remarks	Qty	Model
		refrigerant compressor connecting and mounting parts for compressor			diesel eng.: AAZ	45	068 260 907	spacer bush		1	
						46	068 260 947	locking disc		1	
(21)	357 820 803 T	refrigerant compressor with electro-magnetic coupling	SD709	1		47	068 260 947 A	locking disc		1	
-	028 260 679 B	bracket for compressor		1		48	N 900 722 01	washer	10X21X5	1	
-	N 903 202 02	allen key head bolt (combi)	M10X35	2		49	N 011 010 11	hexagonal nut	M10	1	
22	357 820 811 A	electro-magnetic coupling		1		50	N 906 283 01	hexagonal head bolt	M10X95	1	
23	028 260 849 L	ribbed v-belt	21,36X1145MM	1		-	357 298 012	attachment parts for electro-magnetic coupling	1/2=20UNF	1	
24	068 903 141 T	bracket for alternator		1				- - - E N D - - -			
25	068 903 147 G	bush		1							
26	037 260 921	threaded bush		1							
27	027 145 531 A	vane pump bracket	rear	1							
28	N 010 345 10	hexagonal head bolt	M8X45	1							
29	N 010 385 7	hexagonal head bolt	M8X85	1							
30	N 900 333 01	washer	B8,4X20X2,5	X							
31	N 022 146 4	hexagon nut, self-locking	VM8	2							
32	N 010 375 10	hexagonal head bolt	M8X75	1							
33	N 014 723 6	allen key head bolt	M10X30	3							
34	N 012 230 7	spring washer	B10X21X1	2							
35	068 260 917 B	angled bracket		1							
36	068 903 149 B	bush		2							
37	N 010 388 3	hexagonal head bolt	M8X90	1							
38	027 260 937	eye bolt		1							
39	N 100 366 01	flat round head bolt	M8X32	1							
40	N 900 744 01	hexagon nut, self-locking	M8	2							
41	N 010 274 1	hexagonal head bolt	M8X75	2							
42	N 011 525 20	washer	A8,4X16X1,6	2							
43	068 260 940	relay roller		1							
44	068 260 910	hexagonal head bolt	M10	1							