

Technical data

Application of PR Nos./brakes



The PR No. on the vehicle data sticker indicates the type of brakes installed in the vehicle.

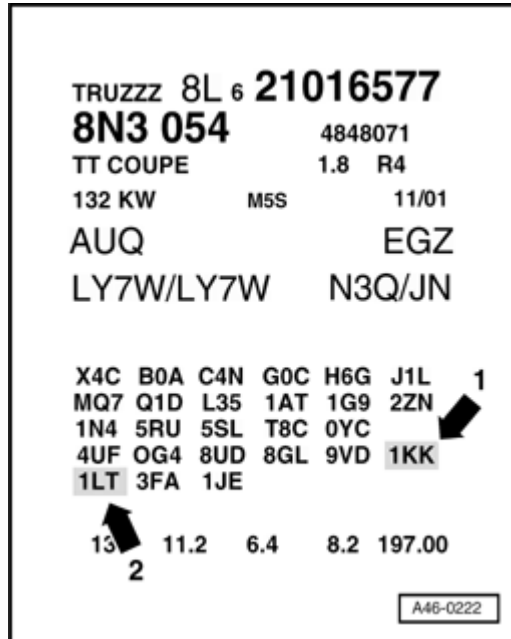
- ◆ Arrow 1 - Rear brake
- ◆ Arrow 2 - Front brake

The vehicle data sticker is located in the spare wheel recess and in service booklet.

The PR No. can be used to identify the proper brake caliper/brake disc/brake pad combination.

⇒ *Parts catalog*

| Engine | PR No. | Front brake |
|-------------------|----------|---------------|
| 1.8 ltr. - 110 kW | 1LT | FN 3 (16") |
| 1.8 ltr. - 132 kW | | |
| 1.8 ltr. - 165 kW | | |
| 1.8 ltr. - 132 kW | G1A, 1LV | FN 3 (16") |
| 3.2 l - 184 kW | 1ZT | 2 FN 42 (17") |





| Engine | PR No. | Rear brake |
|--------------------------|--------|------------|
| Front-wheel drive | | |
| 1.8 ltr. - 110 kW | 1KK | C 38 |
| 1.8 ltr. - 132 kW | | |
| 1.8 ltr. - 132 kW | 2EK | C 38 |
| All wheel drive | | |
| 1.8 ltr. - 132 kW | 1KE | C 41 |
| 1.8 ltr. - 165 kW | 1KF | C 38 |
| 3.2 ltr. - 184 kW | 1KF | C 38 |

Brakes

| Brake system | | |
|--|--------------|-----------|
| Dual-circuit brake system with diagonal distribution, Anti-locking Brake System (ABS) with Electronic Brake Pressure Distribution (EBD), Electronic Differential Lock (EDL), Traction Control System (ASR), Electronic Stabilization Program (ESP) | | |
| Brake master cylinder | dia., mm | 23.81 |
| Brake booster, pneumatic | dia., inches | 10" |
| | Function | pneumatic |
| Boost factor | | i = 5 |



| Front brakes | | | | |
|---|----------|-------------------|-----------------|------------|
| Brake caliper | | PR No. 1LT | PR No. G1A, 1LV | PR No. 1ZT |
| Front brake caliper | | FN 3 | FN 3 | 2FN |
| Piston | dia., mm | 54 | 54 | 42 |
| Brake disc | | | | |
| Front brake disc | dia., mm | 312 | 312 | 334 |
| Brake disc thickness, ventilated | mm | 25 | 25 | 32 |
| Wear limit | mm | 23 | 23 | 30 |
| Brake pad | | | | |
| Brake pad thickness (without backing plate) | mm | 14 | 14 | 14 |
| Wear limit (without backing plate) | mm | 2 | 2 | 2 |

| Rear brakes | | | | | |
|---|----------|------------|------------|------------|------------|
| Brake caliper | | PR No. 1KK | PR No. 1KE | PR No. 2EK | PR No. 1KF |
| Rear brake caliper | | C 38 | C 41 HR | C 38 | C 38 |
| Piston | dia., mm | 38 | 41 | 38 | 38 |
| Brake disc | | | | | |
| Rear brake disc | dia., mm | 232 | 239 | 232 | 256 |
| Brake disc thickness, not ventilated | mm | 9 | 9 | 9 | - |
| Brake disc thickness, ventilated | mm | - | - | - | 22 |
| Wear limit | mm | 7 | 7 | 20 | 20 |
| Brake pad | | | | | |
| Brake pad thickness (without backplate) | mm | 12 | 12 | 12 | 12 |
| Wear limit (without backplate) | mm | 2 | 2 | 2 | 2 |