

Touareg Air Suspension Adjustment

Please be sure to use the latest version of the VAG-COM software. This procedure is written for version 404.0 or later.

First as a reference, please read this article: [THE 402 MOD: Audi allroad suspension adjustment how-to](#)

- 1) park on level ground - concrete garage floor is good.
- 2) Now connect VAG-COM to car with car running
- 3) Set the car on Auto level and take measurements from wheel center to fender lip per this drawing:

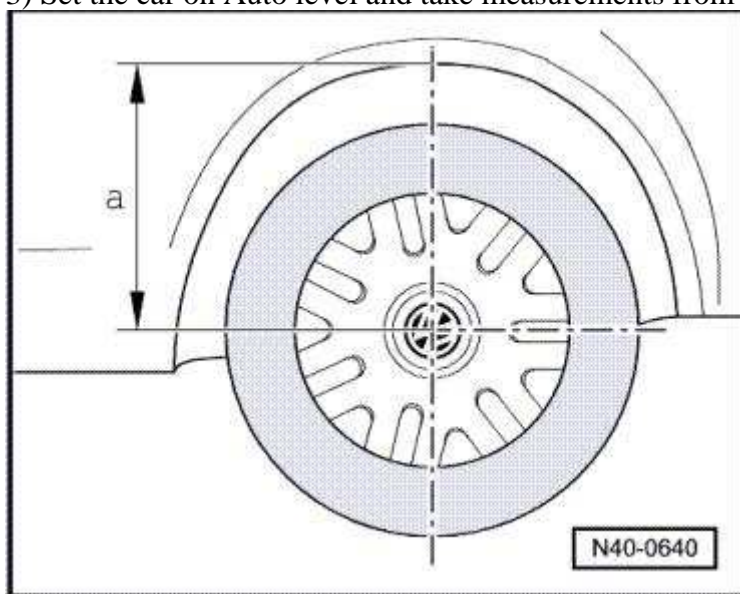


Chart them as:

	Right Front	Left Front	Right Rear	Left Rear
Before	497 mm - 19 5/8"	497 mm - 19 5/8"	502 mm - 19 3/4"	502 mm - 19 3/4"
After				

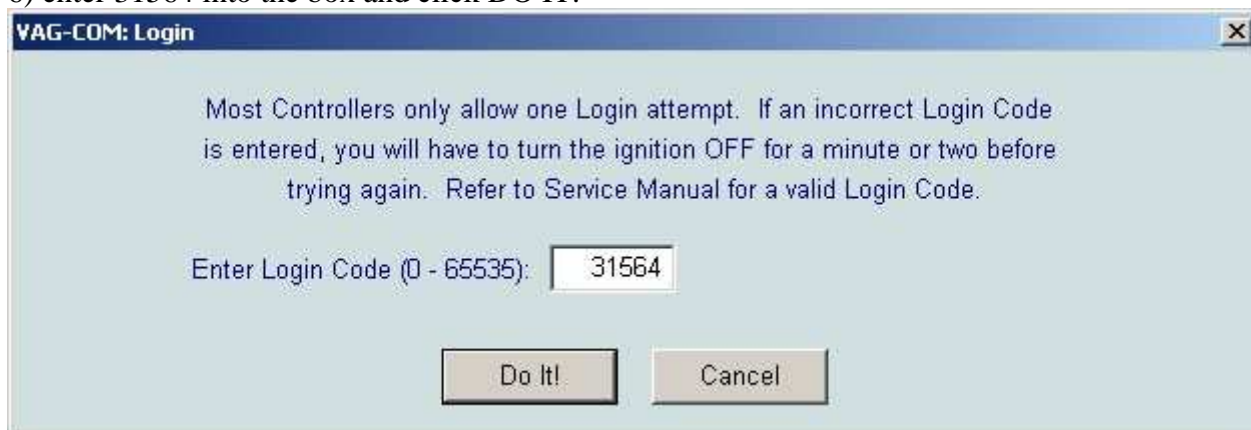
- 4) Enter module 34 - level ctrl.



5) Function 16 - security access



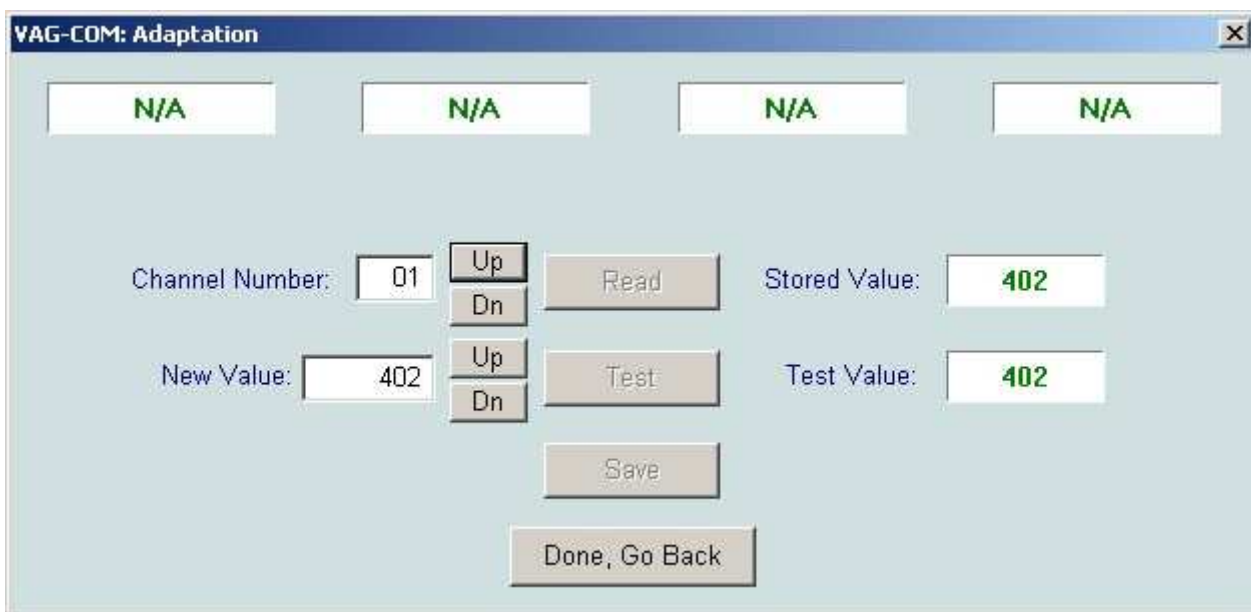
6) enter 31564 into the box and click DO IT.



7) now go to Adaptation - 10



8) advance to ch 1 using the UP box - The car's air suspension will lower itself and then raise itself into auto position. Allow the car to do this cycle before entering data. You will get a running gear fault at this point. This isn't a problem and will clear when you have completed the process. **Remember: To lower you want to go up in value. To raise the car, you want to go down in value.** The reference value for the front is 497 mm and the rear is 502 mm. So if you want to lower the car by 1", you will ADD 25 mm to those numbers to get the new numbers: 522 mm and 527 mm.



9) In the NEW VALUE box for CH 1, enter the new number you want.

Then click the TEST box.

Then click the SAVE box.

Then click YES in the confirmation box that pops up.

At this point, the stored value should be your new number.

In some cases, the controller doesn't accept the value the first time you try it. So do it again if it didn't accept the number; enter the new number you want. Then click the TEST box. Then click the SAVE box.

Then click the confirmation box that pops up. Now the stored value should be the new number.



Now follow this procedure for each of the next three channels: CH2, CH3 and CH4.

At channel number 5, you must raise the NEW VALUE from 0 to 1. This confirms all the previous channel 1 through 4 changes. If you do not do channel 5 you will either get an error message if you try to close or no changes will take place.

CH 5 - New value

change from 0 to 1

then click save

Then click YES on the confirmation box that pops up



10) In about 10 to 15 seconds the green text at the top of the adaptation box will turn red with an error message. This is normal. Click DONE, GO BACK. At this point you should see the car lower or raise to its new height. Exit the controller and you are done.

11) Now measure the car's height. It should be lower/higher per the difference you desired.

Disclaimer: I assume no liability or responsibility for any damages or loss that may arise either directly or indirectly as a result of the application of the information provided herein. Please read instructions fully before attempting this modification. Serious harm or injury may come to you or your vehicle by performing these modifications. This mod will seriously alter the handling characteristics of your vehicle. Perform this modification AT YOUR OWN RISK.



Blue Silver car is lowered by about 1".