

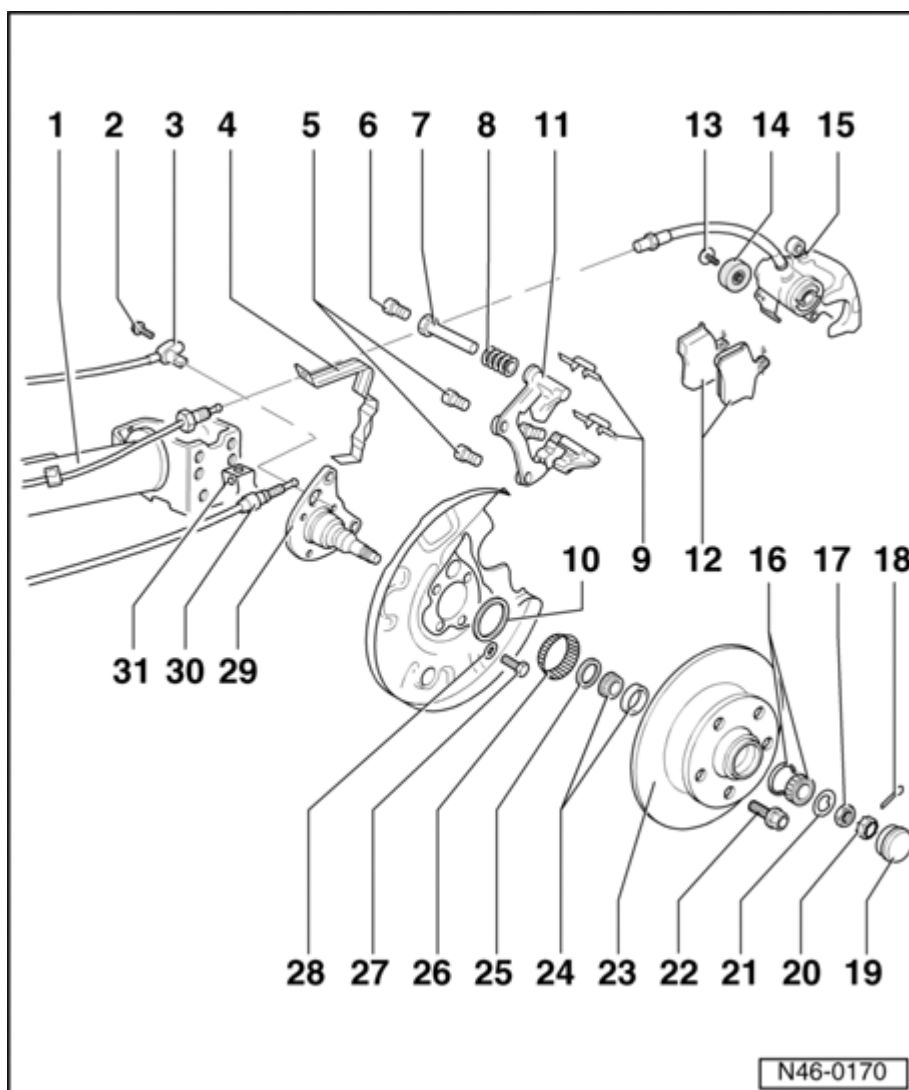


## Rear brakes - disc brake, servicing

### Rear brake - Girling disc brake for vehicles with Front and All-Wheel Drive, servicing

#### Note :

- For All-Wheel Drive, illustration does only apply for ⇒ [Item - 5 -](#) , ⇒ [Item - 6 -](#) , ⇒ [Item - 7 -](#) , ⇒ [Item - 8 -](#) , ⇒ [Item - 9 -](#) , ⇒ [Item - 10 -](#) , ⇒ [Item - 11 -](#) and ⇒ [Item - 12 -](#) .



- Axle beam
- Hex socket head bolt, 10 Nm
- Wheel speed sensor
  - For vehicles with ABS only

- Insert with solid lubricant G 000 650
  
- **Bracket for brake hose**
  
- **Hex socket head bolt, 65 Nm**
  
- **Hex bolt, self-locking, 35 Nm**
  - Replace
  
  - When loosening and tightening, counter-hold at guide pin
  
- **Guide pins**
  
- **Protective cap**
  
- **Brake pad securing spring**
  - Always replace when pads are replaced
  
- **Cover ring**
  - Distance collar - cover ring to cover plate 9.5 mm
  
- **Brake carrier with guide pins and protective cap**
  - Supplied as pre-assembled replacement part with sufficient grease on guide pins
  
  - If protective caps or guide pins are damaged, install repair kit. Use grease packet supplied to lubricate guide pins
  
- **Brake pads**
  - Thickness 12 mm
  
  - Checking thickness:  
⇒ ⇒ [Repair Manual, Maintenance](#)

- Wear limit: 7 mm (including backing plate)
- Must always be replaced together on both sides of axle
- Removing and installing ⇒ [46-3, Brake pads, removing and installing](#)
  
- **Hex bolt, 23 Nm**
  - (for USA vehicles only)
  
- **Vibration damper**
  - (for USA vehicles only)
  
- **Brake caliper**
  - Servicing ⇒ [47-4, Rear brake caliper, servicing](#)
  - After servicing or replacing, parking brake cable must be adjusted first.

**Foot brake must not be operated beforehand!**

**Adjusting parking brake** ⇒ [46-3, Parking brake - disc brake, adjusting](#)

- **Outer wheel bearing**
- **Hex nut**
  - Adjust wheel bearing play; thrust pad must be movable when applying finger pressure on screwdriver without prying ⇒ [42-3, Adjusting wheel bearing play](#)
  - Secure with castle nut and new pin.
  
- **Pin**

- Replace
  
- **Grease cap**
  - Removing and installing ⇒ [42-3, Pressing off grease cap](#)
  
- **Castle nut**
  
- **Thrust pad**
  
- **Wheel bolt, 110 Nm**
  
- **Brake disc**
  - Brake disc for Front Wheel Drive (FWD) vehicles: 226 mm  $\varnothing$
  
  - Removing and installing ⇒ [42-3, Wheel bearing - Front Wheel Drive Vehicles - disc brakes, servicing](#)
  
  - Brake disc for Front Wheel Drive (FWD) vehicles: 239 mm  $\varnothing$
  
  - Removing and installing ⇒ [42-3, Wheel bearing - All Wheel Drive Vehicles - disc brakes, servicing](#)
  
  - Brake disc thickness for both versions: 10 mm
  
  - Wear limit: 8 mm
  
  - Always replace pads on both sides of axle if worn.
  
  - Assembly sequence for run-in brake disc
    - **Brake caliper**
  
    - **Brake pads**
  
    - **Brake carrier**

- **Inner wheel bearing**
- **Seal**
- **Rotor for speed sensor**
  - Drive off through wheel bolt bores using drift
  - Install using appropriate sleeve
- **Hex bolt, 60 Nm**
- **Dished washer**
  - Large contact surface faces splash plate
- **Stub axle**
- **Parking brake cable**
  - Adjusting parking brake ⇒ [46-3, Parking brake - disc brake, adjusting](#)
- **Spring clamp**

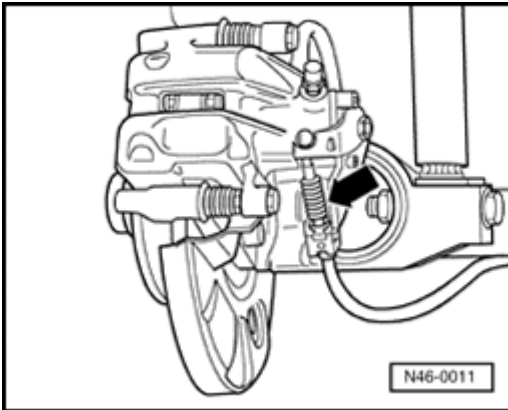
## Brake pads, removing and installing

### **Note:**

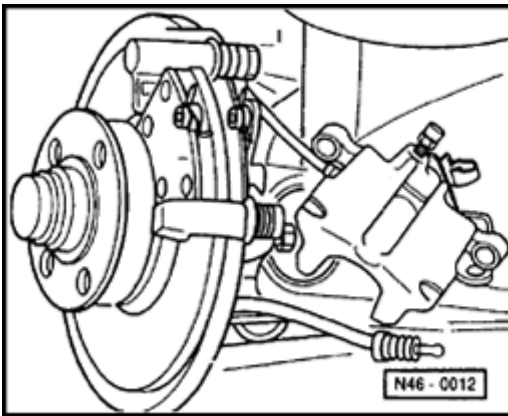
- *When removing, mark brake pads that will be used again. Install in the same position, otherwise braking effect will be uneven!*

### Removing

- Remove wheels.



- Remove parking brake cable at brake caliper - **arrow** - .

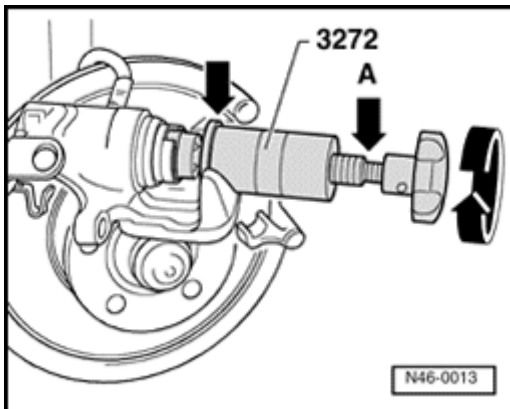


- Remove mounting bolts from brake caliper housing, counter-hold guide pins to do so.
- Remove brake pads and pad retaining springs.
- Clean brake caliper housing, especially adhesive surface for brake pad. It must be free of residual adhesive and grease.

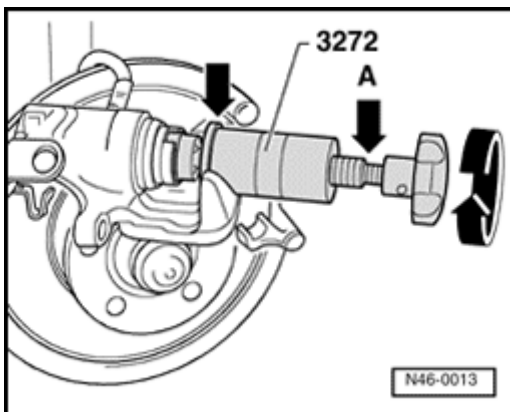
### Installing

#### **Note:**

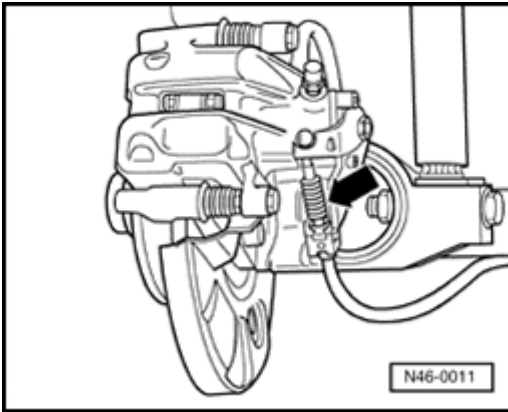
- *Before pushing back the piston, siphon some of the brake fluid out of the brake fluid reservoir. When siphoning brake fluid, always use a bleeder bottle or a plastic bottle that is used exclusively for brake fluid. Brake fluid is poisonous. NEVER siphon brake fluid with your mouth!*



- *Insert Reset And Screwout Tool 3272 so that collar - **arrow** - of tool makes contact at brake caliper.*
- *For pistons that are difficult to move, an open-end wrench (size 13 mm) can be applied at the appropriate wrench surface - **arrow A** - .*
- *When piston is misadjusted with a piston resetting tool, the automatic reset function of the brake caliper is destroyed.*



- Screw in piston by turning toward right - **direction of arrow** - on knurled wheel of Reset And Screwout Tool 3272 .
- Remove protective foil on backing plate of brake pad.
- Insert brake pads.
- Secure brake caliper housing with new self-locking bolts.



- Secure parking brake cable - **arrow** - at brake caliper housing.

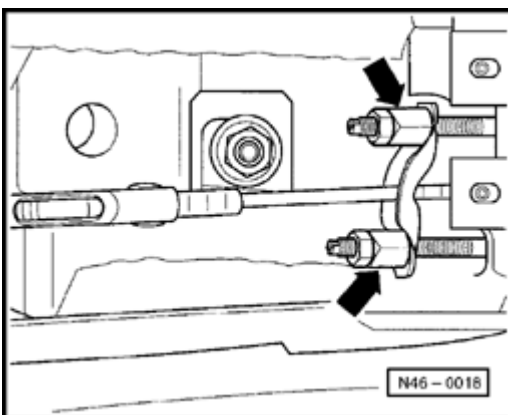
**Note:**

- *After replacing brake pads and before moving vehicle, always depress brake pedal several times firmly to properly seat brake pads in their normal operating position.*
  
- *Check brake fluid level after replacing brake pad.*

**Parking brake - disc brake, adjusting**

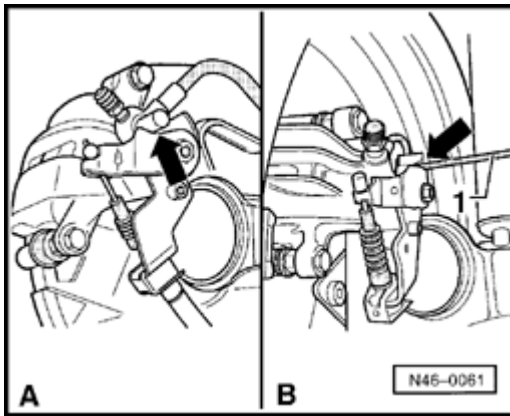
**Note:**

- *Because the rear brakes have an automatic adjustment function, readjusting the parking brake is usually not necessary. Only adjust after replacing parking brake cables, brake calipers and brake discs.*



- *To adjust adjustment nut - **arrows** - , remove handle and center console ⇒ [46-4, Remove handle](#) .*





- Parking brake lever in released position. Tighten adjustment nuts enough that the levers - **arrow** - lift off stops at brake calipers.

A - up to vehicle identification no. 3A-S-990 000

B - as of vehicle identification no. 3A-T-000 001

1 - Feeler gauge

- Maximum 1.5 mm distance to stop - **arrow** - per side permissible, adjust uniformly on both sides.

- Tighten parking brake 3 times and then release again.

- Check whether wheels turn freely.