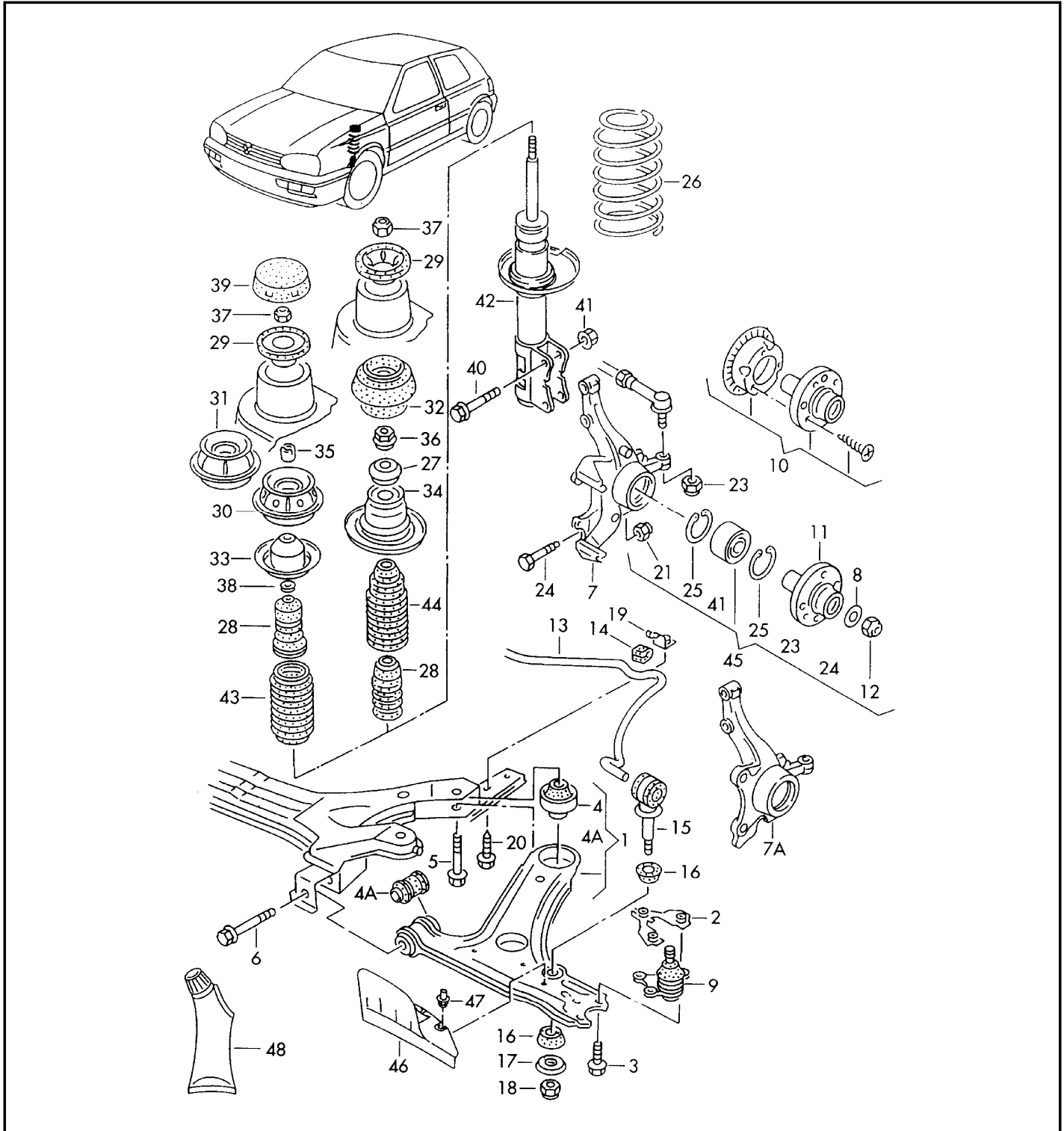




# ETKA

Model	Year	MG	SG	Illustration	Restrictions	UPD	23:28	09.05.2006
JEM	1998	4	07	407-10		618		





# ETKA

Model	Year	MG	SG	Illustration	Restrictions	UPD	23:28	09.05.2006
JEM	1998	4	07	407-10		618		

Pos	Part Number	Name	Remarks	Qty	Model
		track control arm suspension wheel bearing housing	front		ABA,ACC,AAZ, AHU
1	1H0 407 151	track control arm		2	
2	191 407 175	retainer plate		2	
(3)	+ N 101 277 06	bolt, hex. hd. with shoulder	M8X26	6	
4	191 407 181 D	bonded rubber mounting	rear	2	
(4)	357 407 182	bonded rubber mounting	front	2	
5	N 102 078 03	screw, hex. hd.	M12X1,5X78	2	
6	N 904 840 03	screw, hex. hd.	M12X1,5X82	2	
(7)	1H0 407 255 B	wheel bearing housing	left	1	"CDN"+ACC, AAZ
(7)	1H0 407 256 B	wheel bearing housing	right	1	"CDN"+ACC, AAZ
7A	357 407 255 C	wheel bearing housing	left	1	AHU,ABA
(7A)	357 407 256 C	wheel bearing housing	right	1	AHU,ABA
8	171 407 277	washer		2	
(9)	357 407 365	ball joint F 1W-X-261 909>>*		2	
10	357 407 613 B	wheel hub with rotor for vehicles with anti-locking brake system -abs-	4/100	2	
11	357 407 615 E	wheel hub	4/100	2	
(12)	171 407 643 A	hex. nut, self-locking	M20X1,5	2	
(13)	1H9 411 309	stabilizer	21,5MM also use: 1H0 411 314	1 2	ABA,ACC,AAZ
(13)	1H0 411 309 G	stabilizer	20MM also use: 1H0 411 314	1 2	AHU
(14)	1H0 411 314	rubber mounting	D=19MM	2	
14	191 411 314	rubber mounting	D=17MM	2	
15	191 411 315 B	connecting link		2	



# ETKA

Model	Year	MG	SG	Illustration	Restrictions	UPD	23:28	09.05.2006
JEM	1998	4	07	407-10		618		

Pos	Part Number	Name	Remarks	Qty	Model
16	6N0 411 329	support ring F 1H-W-155 486>>*		4	
17	+ 191 411 331	washer		2	
18	+ N 011 184 9	hex. nut, self-locking	M8	2	
19	191 411 334	clamp	inner	2	
20	+ N 010 241 18	screw, hex. hd.	M8X22	2	
21	* N 011 185 9	hex. nut, self-locking	M10	2	
22	+ N 900 577 01	washer	8,4X21X2	2	
(23)	N 903 213 02	hex. nut, self-locking	M12X1,5	2	
24	* N 903 289 01	screw, hex. hd.	M10X50	2	
25	* N 903 293 01	lock ring	72X2	4	
(26)	1J0 411 105 AG	coil spring 1 paint mark 4 paint marks	green white	2	AAZ,ABA,ACC
(26)	1H9 411 105 G	coil spring 1 paint mark 2 paint marks	pink blue	2	
(26)	1H9 411 105 H	coil spring 1 paint mark 3 paint marks	pink blue	2	AHU
(26)	357 411 105 AA	coil spring 2 paint marks 1 paint mark	pink green	2	ACC
(26)	357 411 105 AB	coil spring 2 paint marks 2 paint marks	pink green	2	ABA
(26)	357 411 105 P	coil spring 3 paint marks 1 paint mark	pink green	2	ABA
27	1J0 412 249	ball bearing		2	
(28)	1H0 412 303 B	rubber stop for shock absorber	63	2	
29	357 412 319 B	stop		2	
32	357 412 331 A	suspension strut mounting		2	



# ETKA

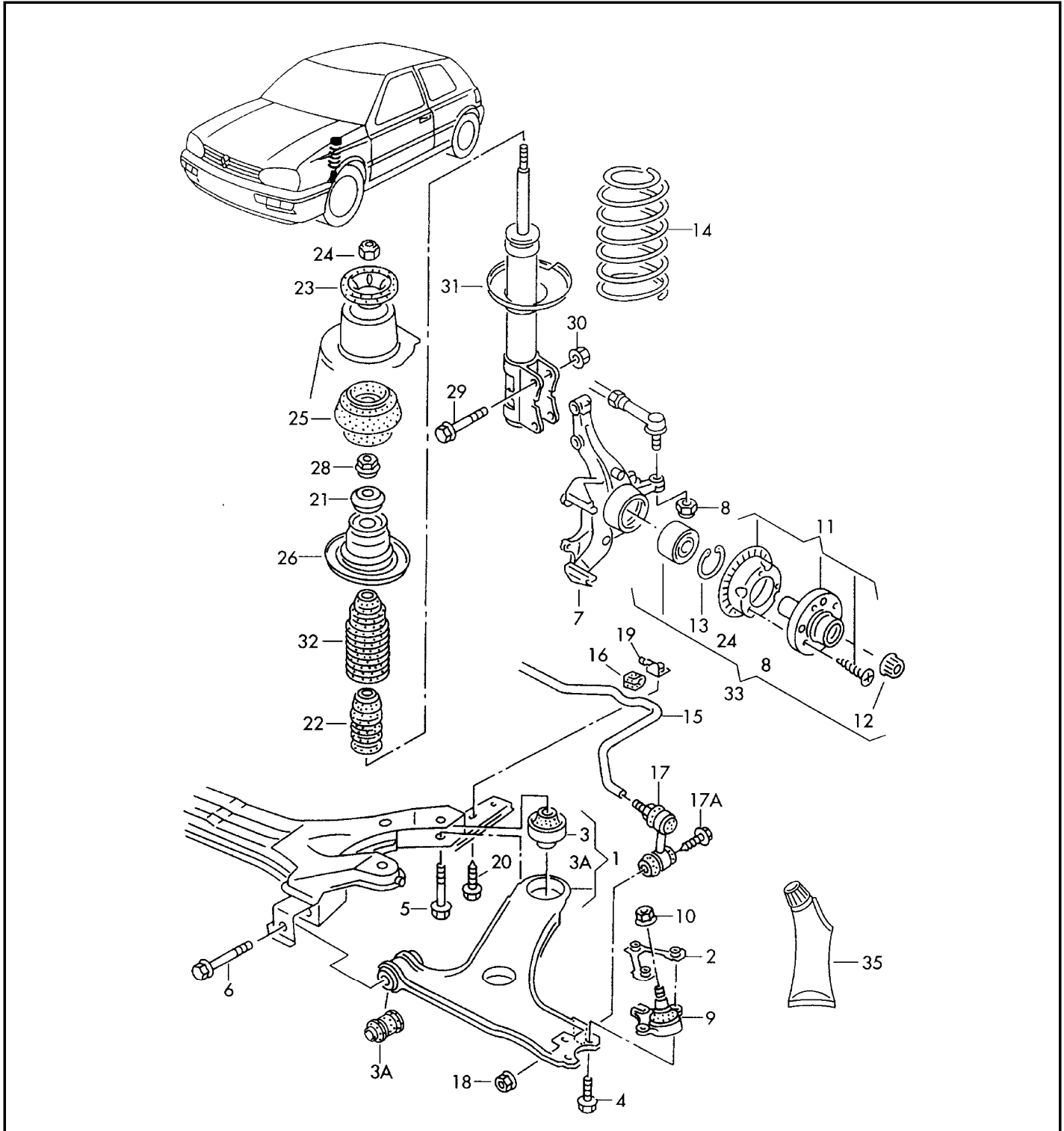
Model	Year	MG	SG	Illustration	Restrictions	UPD	23:28	09.05.2006
JEM	1998	4	07	407-10		618		

Pos	Part Number	Name	Remarks	Qty	Model
34	1J0 412 341	spring seat	upper	2	
36	1H0 412 365 A	threaded bushing	M14X1,5	2	
37	N 022 150 1	hex. nut, self-locking	M14X1,5	2	
39	1HM 412 359	cap		2	
(40)	N 101 740 02	bolt, hex. hd. with shoulder for camber correction	BM12X1,5X58	4	
41	N 903 237 04	shouldered hex. nut, self-locking	M12X1,5	4	
42	1H0 413 031 P	shock absorber		2	AAZ, ABA, AHU
(42)	1H0 413 031 N	shock absorber		2	ACC
44	357 413 175 A	boot	221,5MM	2	
45	357 498 625 B	wheel bearing with mounting parts		2	
46	1H0 615 447	air duct	left	1	
(46)	1H0 615 448	air duct	right	1	



# ETKA

Model	Year	MG	SG	Illustration	Restrictions	UPD	23:29	09.05.2006
JEM	1998	4	07	407-15		618		





# ETKA

Model	Year	MG	SG	Illustration	Restrictions	UPD	23:29	09.05.2006
JEM	1998	4	07	407-15		618		

Pos	Part Number	Name	Remarks	Qty	Model
		track control arm suspension wheel bearing housing	front		AAA
1	1H0 407 151 A	track control arm	left	1	
(1)	1H0 407 152	track control arm	right	1	
2	1J0 407 175	retainer plate		2	
3	191 407 181 D	bonded rubber mounting	rear	2	
(3)	357 407 182	bonded rubber mounting	front	2	
(4)	+ N 101 277 06	bolt, hex. hd. with shoulder	M8X26	6	
5	N 102 078 03	screw, hex. hd.	M12X1,5X78	2	
6	N 904 840 03	screw, hex. hd.	M12X1,5X82	2	
7	1H0 407 255	wheel bearing housing only for:	left 15"	1	
(7)	1H0 407 256	wheel bearing housing only for:	right 15"	1	
(8)	N 903 213 02	hex. nut, self-locking	M12X1,5	2	
(9)	1H0 407 365 A	ball joint		2	
10	N 903 237 04	shouldered hex. nut, self-locking	M12X1,5	4	
(11)	1H0 407 613 B	wheel hub with rotor	5/100	2	
-	1H0 614 150	rotor for speed sensor		2	
12	N 905 876 02	12 point socket shouldered nut self-locking	M20X1,5	2	
13	* N 903 293 01	lock ring	72X2	2	
(14)	357 411 105 R	coil spring 4 paint marks 3 paint marks	pink green	2	
(15)	1H0 411 309 F	stabilizer 1 paint mark F >> 1H-V-060 016*	20MM yellow	1	
(15)	1H9 411 309 A	stabilizer marked with: F 1H-V-060 017>>*	front 20MM	1	



# ETKA

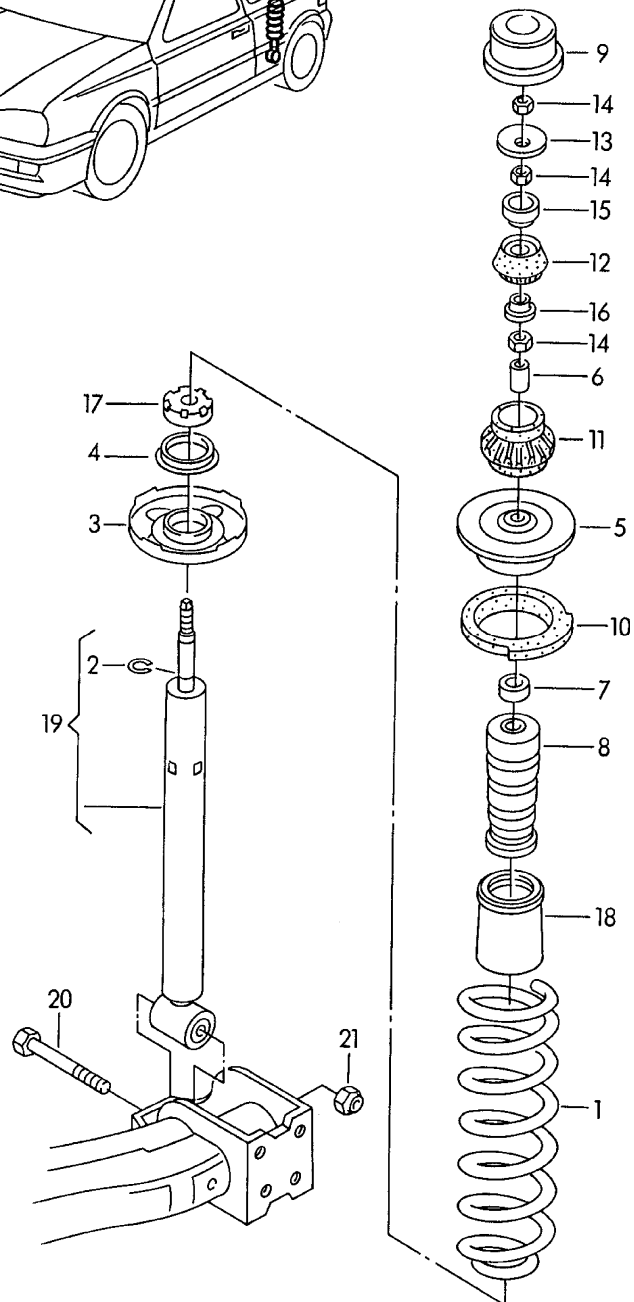
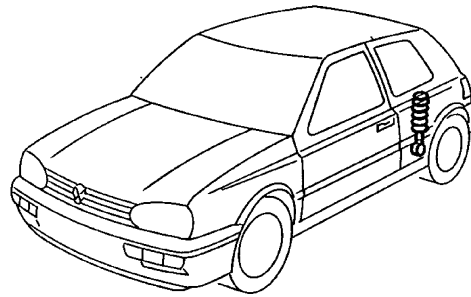
Model	Year	MG	SG	Illustration	Restrictions	UPD	23:29	09.05.2006
JEM	1998	4	07	407-15		618		

Pos	Part Number	Name	Remarks	Qty	Model
16	191 411 314	rubber mounting	inner	2	
17	535 411 315	connecting link		2	
17A	N 019 504 3	screw, hex. hd.	BM8X45	2	
18	+ N 902 264 03	shouldered hex. nut, self-locking	M8	2	
19	191 411 334	clamp	inner	2	
20	N 019 538 2	bolt, hex. hd. with shoulder	M8X18	2	
21	1J0 412 249	ball bearing		2	
(22)	1H0 412 303 B	rubber stop for shock absorber	63	2	
23	357 412 319 B	stop		2	
24	* N 022 150 1	hex. nut, self-locking	M14X1,5	2	
25	357 412 331 A	suspension strut mounting		2	
(26)	1J0 412 341	spring seat	upper	2	
28	1H0 412 365 A	threaded bushing	M14X1,5	2	
(29)	N 101 740 02	bolt, hex. hd. with shoulder for camber correction	BM12X1,5X58	4	
30	N 903 237 04	shouldered hex. nut, self-locking	M12X1,5	4	
(31)	1H0 413 031 L	shock absorber F >> 1H-V-060 016*		2	
(31)	1H0 413 031 Q	shock absorber F 1H-V-060 017>>*		2	
32	1H0 413 175	boot	228,5MM	2	
33	1H0 498 625	wheel bearing with mounting parts		2	



# ETKA

Model	Year	MG	SG	Illustration	Restrictions	UPD	23:25	09.05.2006
JEM	1998	5	11	511-10		618		







# ETKA

Model	Year	MG	SG	Illustration	Restrictions	UPD	23:25	09.05.2006
JEM	1998	5	11	511-10		618		

Pos	Part Number	Name	Remarks	Qty	Model
(1)	1H5 511 115 J	suspension coil spring 2 paint marks 1 paint mark  to be used for: 2 paint marks 1 paint mark	rear  yellow brown  yellow green	2	JETTA+ACC, ABA,AAA,AAZ
(1)	1H5 511 115 H	coil spring 1 paint mark 1 paint mark	yellow brown	2	JETTA+AHU
(1)	1H6 511 115 J	coil spring 2 paint marks	yellow	2	GOLF
2	8D0 512 097	circlip		2	
3	3A0 512 103	spring seat	lower	2	
4	321 512 109	packing	lower	2	
5	191 512 113	spring seat	upper	2	
6	191 512 117	spacer sleeve		2	
7	191 512 119	ring	4,1X20X11,1	2	
8	191 512 131 B	buffer	146MM	2	ACC,AAZ,ABA, AHU
(8)	1H0 512 131 C	buffer	140MM	2	AAA
9	191 512 135	protective cap		2	
10	1H0 512 149	packing	upper	2	
11	191 512 333	support ring	lower	2	
12	191 512 335	support ring	upper	2	
13	191 512 337	concave washer		2	
14	+ N 103 286 02	hex. nut	M10X1	6	
15	191 512 339	thrust washer		2	
16	191 512 340	support washer		2	
17	191 513 269	protective cap		2	ACC,AAZ,ABA
(17)	1H0 513 269 C	protective cap		2	AAA



# ETKA

Model	Year	MG	SG	Illustration	Restrictions	UPD	23:25	09.05.2006
JEM	1998	5	11	511-10		618		

Pos	Part Number	Name	Remarks	Qty	Model
18	191 513 425	protective pipe	90MM	2	
19	1HM 513 031 E	shock absorber		2	ABA
(19)	1HM 513 031 F	shock absorber		2	ACC,AAZ
(19)	1H0 513 031 D	shock absorber		2	AHU
(19)	1H0 513 031 S	gas-filled shock absorber for sports-type running gear		2	AAA
20	+ N 905 173 02	screw, hex. hd.	M10X75	2	
21	+ N 102 090 05	hex. nut, self-locking	M10	2	
-	165 501 462	protective plate	right	1	