



Sales Information

6 Speed Transmission Parts



Identification of the transmission

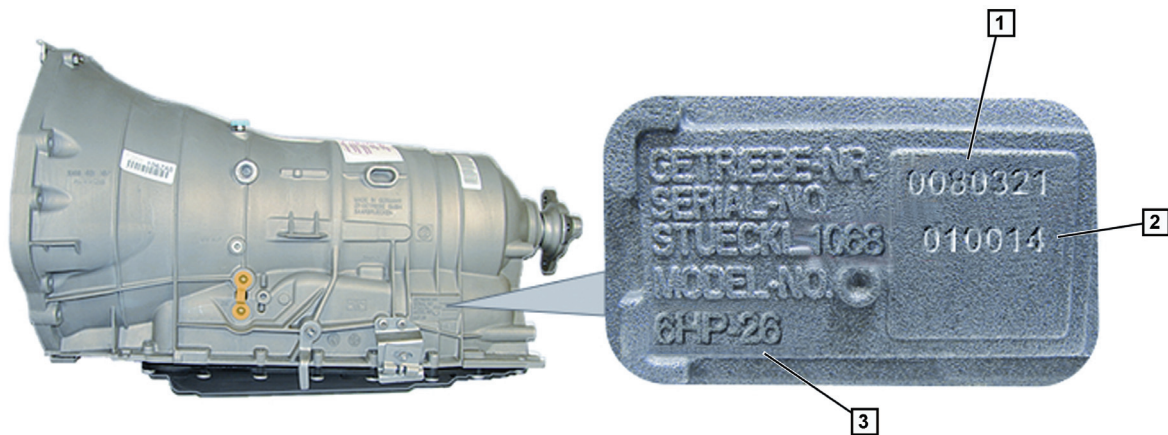





Fig. 1: 1 Serial Number, 2 Main Parts List, 3 Transmission Type

The first 4 digits of the **Main Parts List** are cast into the transmission housing, followed by the remaining 6 digits stamped into the housing. Main Parts List in this example = **1068 010 014**

Part	Fits
	<p>0501 216 244 Oil pan for 6HP19. Will fit all applications where a plastic oil pan is used.</p>
	<p>0501 323 156 Oil pan gasket for 6HP19/21 oil pan.</p>
	<p>0501 216 243 Oil pan for 6HP26. Will fit all applications where a plastic oil pan is used.</p>



Sales Information

6 Speed Transmission Parts






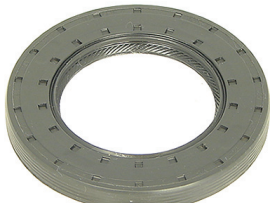
Part	Fits
	0501 323 155 Oil pan gasket for 6HP26/28/32 oil pan.
	0501 216 272 Connector sleeve, fits all ZF 6 speed transmissions.
	0501 216 272 Drain plug, fits all ZF 6 speed transmissions.
	0501 319 012 Filter o.-ring, fits all ZF 6 speed transmissions.
	1068 303 017 Oil pan gasket for 6HP26X. Will fit applications with steel oil pan.
	0501 213 359 Oil filter for 6HP26X. Will fit applications with steel oil pan.
	0736 101 486 Oil pan screw for plastic oil pan.



Sales Information

6 Speed Transmission Parts



Part	Fits
	<p>0736 010 347 Oil pan screw for steel oil pan.</p> <p>LifeGuardFluid6 S671 090 255</p> <p>all 6HP19, all 6HP19X except for Audi Q7, all 6HP21, 6HP21X, 6HP26, 6HP26X, all 6HP26A61(2) except vehicles with Audi W12-engine all 6HP28, 6HP28X, 6HP28A61, all 6HP32, 6HP32A (2), 6HP32X</p>
	<p>LifeGuardFluid6+ S671 090 281 6HP26A61(2) for vehicles with Audi W12-engine</p>
	<p>LifeGuardFluid8 AA00 601 304 all 6HP19A (2) 6HP19X for Audi Q7 all 6HP28AF (2)</p>
(2) differential require different oil, see TE-ML11 for specifications.	(2) differential require different oil, see TE-ML11 for specifications.
	<p>0501 212 940 Adapter for all 6HP19/21 applications. Mechatronic seal adapter, fits between mechatronic and transmission housing.</p>
	<p>0501 219 952 Adapter for all 6HP26/28/32 applications. Mechatronic seal adapter, fits between mechatronic and transmission housing.</p>
	<p>0734 310 418 Inner output flange seal, fits all 6 speed transmissions so equipped.</p>
	<p>0734 319 633 Output flange shaft seal, fits all 6 speed transmissions with output flange.</p>



Sales Information

6 Speed Transmission Parts





Part	Fits
 	<p>0734 319 706 Output shaft seal, fits 6 speed transmissions with external transfer case.</p> <p>0734 319 695 Torque converter (pump) shaft seal, fits all 6 speed transmissions.</p>
	<p>0501 321 759 Output flange locking nut, fits all 6 speed transmissions with output flange.</p>
	<p>4168 026 624 06</p> <p>Will fit the following main parts lists: 1068 010 014/034/051/057/060/067/074/084/093 097/160 and 1068 020 018 BMW E65/E66 745 N62 BMW E60/E63/E64 545/645 N62 BMW E53 X5 N62</p> <p>To identify the correct transmission, see Fig.1,2</p>
	<p>4168 024 150 06</p> <p>Will fit the following main parts lists: 1071 010 007 BMW E60 525 M54</p> <p>To identify the correct transmission, see Fig.1,2</p>
	<p>4168 024 151 06</p> <p>Will fit the following main parts lists: 1071 010 005 and 1071 010 013 BMW E60 530 M54</p> <p>To identify the correct transmission, see Fig.1,2</p>



Sales Information

6 Speed Transmission Parts



Part	Fits
	1071 210 087 Intermediate plate screw with usit ring. 6HP19/21 require 11 pieces 6HP26/28/32 require 13 pieces
	1068 210 116 6HP26/28/32 require 1 piece

BMW Vehicle	Main Parts List	Transmission Part #	Mechatronic Part #
E90-E91-E92-E93 325 N52	1071 010 025 1071 010 027	1071 012 085 06	1071 198 974 06
E90-E92 325xi N52	1071 020 006	1071 022 016 06	1071 198 974 06
E90-E91 330 N52	1071 010 024 or 1071 010 029	1071 012 086 06	1071 198 974 06
E90-E91 330xi N52	1071 020 007	1071 022 015 06	1071 198 974 06
E60 525 M54	1071 010 007	1071 012 049 06	1071 198 980 06
E60 525 N52	1071 010 027	1071 012 085 06	1071 198 974 06
E60-E61 525xi N52	1071 020 006	1071 022 016 06	1071 198 974 06
E60 530 M54	1071 010 005	1071 012 050 06	1071 198 980 06
E60-E61 530 N52	1071 010 024 or 1071 010 029	1071 012 086 06	1071 198 974 06
E60-E61 530xi N52	1071 020 007	1071 022 015 06	1071 198 974 06
E60-E61 545 N62 E63-E64 645 N62	1068 010 050 or 1068 010 067 or 1068 010 093	1068 012 253 06	1068 198 932 06
E60-E61 545 N62 E63-E64 645 N62	1068 010 160	1068 012 366 06	1068 198 932 06
E53 X5 N62	1068 020 018	1068 022 043 06	1068 198 985 06
E65-E66 745 N62	1068 010 034 or 1068 010 057	1068 012 106 06	1068 198 931 06
E65-E66 745 N62	1068 010 060	1068 012 116 06	1068 198 931 06
E65-E66 745 N62	1068 010 051	1068 012 157 06	1068 198 937 06
E65-E66 745 N62	1068 010 097	1068 012 249 06	1070 198 997 06
E65-E66 750 N62	1068 010 123	1068 012 351 06	1068 198 933 06
E65-E66 750 N62	1068 010 166	1068 012 463 06	1068 198 933 06
E65-E66 760	1068 010 062	1068 012 118 06	1068 198 931 06
E65-E66 760	1068 010 054	1068 012 159 06	1068 198 937 06
E65-E66 760	1068 010 092	1068 012 251 06	1070 198 997 06
gE65-E66 760	1068 010 125 or 1068 010 168	1068 012 338 06	1068 198 933 06
E85 Z4 3.0i	1071 010 027	1071 012 089 06	1071 198 974 06
E85 Z4 3.0si	1071 010 029	1071 012 090 06	1071 198 974 06
E86 Z4 3.0si Coupe	1071 010 029	1071 012 090 06	1071 198 974 06



Sales Information

6 Speed Transmission Parts



S-Type Jaguar Vehicle	Main Parts List	Transmission Part #	Mechatronic Part #
S-Type 4.2L V8 NA	1068 010 075	1068 012 140	1068 198 948 06
S-Type 4.2L V8 SC	1068 010 076	1068 012 141	1068 198 948 06
S-Type 3.0L V6 NA	1068 010 045	1068 012 149	1068 198 948 06
S-Type 4.2L V8 NA	1068 010 100	1068 012 205	1068 198 947 06
S-Type 4.2L V8 SC	1068 010 101	1068 012 206	1068 198 947 06
S-Type 3.0L V6 NA	1068 010 102	1068 012 207	1068 198 947 06
S-Type 4.2L V8 NA	1068 010 113	1068 012 314	1068 198 946 06
S-Type 4.2L V8 SC	1068 010 114	1068 012 315	1068 198 946 06
S-Type 3.0L V6 NA	1068 010 115	1068 012 316	1068 198 946 06
S-Type 3.0L V6 NA	1068 010 162	1068 012 388	1068 198 043 06
S-Type 4.2L V8 NA	1068 010 163	1068 012 389	1068 198 043 06
S-Type 4.2L V8 SC	1068 010 164	1068 012 390	1068 198 043 06

XJ Jaguar Vehicle	Main Parts List	Transmission Part #	Mechatronic Part #
XJ 4.2L V8 NA	1068 010 075	1068 012 135	1068 198 948 06
XJ 4.2L V8 SC	1068 010 076	1068 012 136	1068 198 948 06
XJ 4.2L V8 NA	1068 010 100	1068 012 211	1068 198 947 06
XJ 4.2L V8 SC	1068 010 101	1068 012 212	1068 198 947 06
XJ 4.2L V8 NA	1068 010 113	1068 012 320	1068 198 946 06
XJ 4.2L V8 SC	1068 010 114	1068 012 321	1068 198 946 06
XJ 4.2L V8 NA	1068 010 163	1068 012 389	1068 198 943 06
XJ 4.2L V8 SC	1068 010 164	1068 012 390	1068 198 943 06

XK Jaguar Vehicle	Main Parts List	Transmission Part #	Mechatronic Part #
XK 4.2L V8 NA	1068 010 075	1068 012 142	1068 198 948 06
XK 4.2L V8 SC	1068 010 076	1068 012 143	1068 198 948 06
XK 4.2L V8 NA	1068 010 100	1068 012 209	1068 198 947 06
XK 4.2L V8 SC	1068 010 101	1068 012 210	1068 198 947 06
XK 4.2L V8 NA	1068 010 113	1068 012 318	1068 198 946 06
XK 4.2L V8 SC	1068 010 114	1068 012 319	1068 198 946 06



Sales Information

6 Speed Transmission Parts



Land Rover Vehicle	Main Parts List	Transmission Part #	Mechatronic Part #
Discovery 4.0L V6 NA	1068 020 043	1068 022 079 06	1068 198 938 06
Discovery 4.0L V6 NA	1068 020 052	1068 022 070 06	1068 198 942 06
Discovery 4.4L V8 NA	1068 020 069	1068 022 098 06	1068 198 942 06
Discovery 4.4L V8 NA	1068 020 044	1068 022 080 06	1068 198 938 06
Discovery 4.4L V8 NA	1068 020 065	1068 022 069 06	1068 198 938 06

Land Rover Vehicle	Main Parts List	Transmission Part #	Mechatronic Part #
Range Rover Sport 4.4L V8 NA	1068 020 044	1068 022 080 06	1068 198 938 06
Range Rover Sport 4.4L V8 NA	1068 020 065	1068 022 069 06	1068 198 938 06
Range Rover Sport 4.4L V8 NA	1068 020 069	1068 022 098 06	1068 198 942 02
Range Rover Sport 4.2L V8 SC	1068 020 054	1068 022 067 06	1068 198 944 06
Range Rover Sport 4.2L V8 SC	1068 020 066	1068 022 071 06	1068 198 944 06
Range Rover Sport 4.2L V8 SC	1068 020 070	1068 022 099 06	1068 198 942 06

Land Rover Vehicle	Main Parts List	Transmission Part #	Mechatronic Part #
Range Rover 4.4L V8 NA	1068 020 051	1068 022 065 06	1068 198 944 06
Range Rover 4.4L V8 NA	1068 020 064	1068 022 096 06	1068 198 944 06
Range Rover 4.4L V8 NA	1068 020 069	1068 022 098 06	1068 198 942 02
Range Rover 4.2L V8 SC	1068 020 054	1068 022 067 06	1068 198 944 06
Range Rover 4.2L V8 SC	1068 020 066	1068 022 071 06	1068 198 944 06
Range Rover 4.2L V8 SC	1068 020 070	1068 022 099 06	1068 198 942 06