

# Borg Warner (Schwitzer) Contents

Turbo Model	Catalogue Contents	Page No.	Notes
<b>3L</b>	See Holset 3L Section	<b>1</b>	
<b>4MD / 4HD</b>	Repair Kits / Oversize Bearings & Piston Rings	<b>5</b>	
<b>4LE / F / G</b>	Repair Kits / Oversize Bearings & Piston Rings	<b>9</b>	
<b>4LE / F / G</b>	Major Parts (Shaft Wheels)	<b>10</b>	
<b>S1AG / S1B / S1BG</b>	Repair Kits / Oversize Bearings & Piston Rings	<b>13</b>	NEW KITS
<b>S2A</b>	Repair Kits / Oversize Bearings & Piston Rings	<b>17</b>	NEW KITS
<b>S2B (Short Brg)</b>	Repair Kits / Oversize Bearings & Piston Rings	<b>21</b>	NEW KITS
<b>S2B / S2C / S2E</b>	Repair Kits / Oversize Bearings & Piston Rings	<b>25</b>	NEW KITS
<b>S3/S3A</b>	Repair Kits / Oversize Bearings & Piston Rings	<b>29</b>	NEW KITS
<b>S3B</b>	Repair Kits / Oversize Bearings & Piston Rings	<b>33</b>	NEW KITS
<b>S4D / S4DW</b>	Repair Kits / Oversize Bearings & Piston Rings	<b>37</b>	Updated
<b>S4T</b>	Repair Kits / Oversize Bearings & Piston Rings	<b>41</b>	
<b>S200</b>	Repair parts	<b>45</b>	Updated
<b>S300</b>	Repair Kits	<b>49</b>	NEW
<b>S400</b>	Repair Kits	<b>53</b>	NEW
<b>S400</b>	Major Parts (Shaft Wheel)	<b>53</b>	NEW
<b>S500</b>	Repair Parts	<b>57</b>	Updated

# Schwitzer 3L Type Turbos

Melett still stocks repair kits and some parts for 3L turbos.

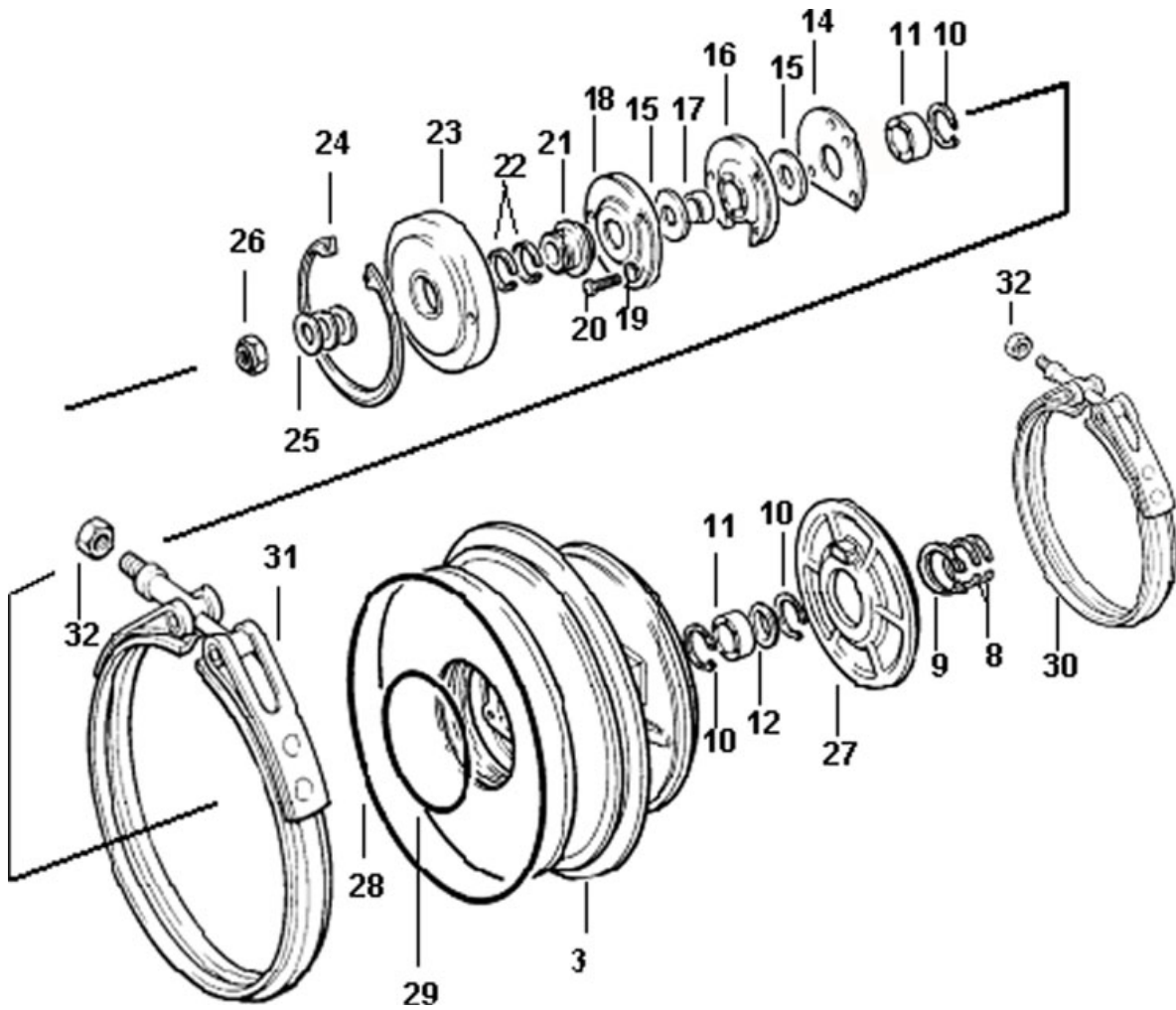
All 3L parts available can be found in the Holset 3L section of this catalogue.

# Schwitzer 4MD/4HD Type Turbos

Common Service Parts  
Oversize Service Parts

# 4MD Type

## Component Parts Common



This illustration is a guide and does not necessarily show all parts accurately

## 4MD Type

### Repair Parts & Service Kits

All parts are available for purchase as individual components or in the following popular Repair Kits

Key	Part Description	MELETT Part Number	Qty per Turbo	Repair Kit <b>1250-404-750</b>	Repair Kit <b>1250-404-751</b>	Repair Kit <b>1250-404-753</b>
11	Bearing (Internal and End Grooves)	<b>1250-404-100</b>	2	2	2	2
10	Snap Ring	<b>1250-404-140</b>	3	3	3	3
24	Snap Ring (insert)	<b>N/A</b>	1			
9	Snap Ring (Turbine back plate)	<b>N/A</b>	1			
29	"O" Ring (insert)	<b>1250-404-150</b>	1	1	1	1
28	"O" Ring (B/Hsg to C/Hsg)	<b>1250-404-155</b>	1	1	1	1
28	"O" Ring (B/Hsg to C/Hsg)	<b>1250-404-156</b>	1			1
8	Piston Ring (Turbine end)	<b>1150-400-170</b>	2	2	2	2
22	Piston Ring (Comp. End)	<b>1150-400-170</b>	2	2	2	2
21	Flinger	<b>N/A</b>	1			
17	Spacer sleeve	<b>N/A</b>	1			
15	Thrust Ring	<b>1250-404-240</b>	2			2
25	Shim 0.003	<b>1250-404-250</b>	As reqd	2	2	2
25	Shim 0.005	<b>1250-404-251</b>	As reqd	2	2	2
25	Shim 0.010	<b>1250-404-252</b>	As reqd	2	2	2
12	Oil Control Sleeve	<b>1250-404-260</b>	1	1	1	1
23	Insert Plate	<b>1250-404-300</b>	1			
18	Oil Deflector (Thrust bearing cover)	<b>N/A</b>	1			
16	Thrust Bearing	<b>1250-404-320</b>	1	1	1	1
14	Spacer Plate	<b>N/A</b>	1			
27	Heat Shield	<b>1250-404-340</b>	1			
26	Shaft Nut (Nylock)	<b>N/A</b>	1			
26	Shaft Nut (Non Nylock)	<b>1250-404-351</b>	1			1
19	Spring Washer (Thrust bearing retainer)	<b>1250-404-580</b>	3	3	3	3
	Set Screw 3/8 UNC	<b>1250-404-600</b>	1			8
20	Bolt, Insert Plate	<b>1100-120-610</b>	3	3	3	
32	Nut, V Band Clamp	<b>1100-120-645</b>	2			2
	Gasket Turbine Inlet	<b>1900-000-004</b>	1	1		
	Gasket Oil Outlet	<b>1900-000-025</b>	1	1		
	Gasket Oil Inlet	<b>1900-000-035</b>	1	1		

Replaces  
 Schwitzer  
**318357**

## 4MD Type

### Oversize Repair Parts Available

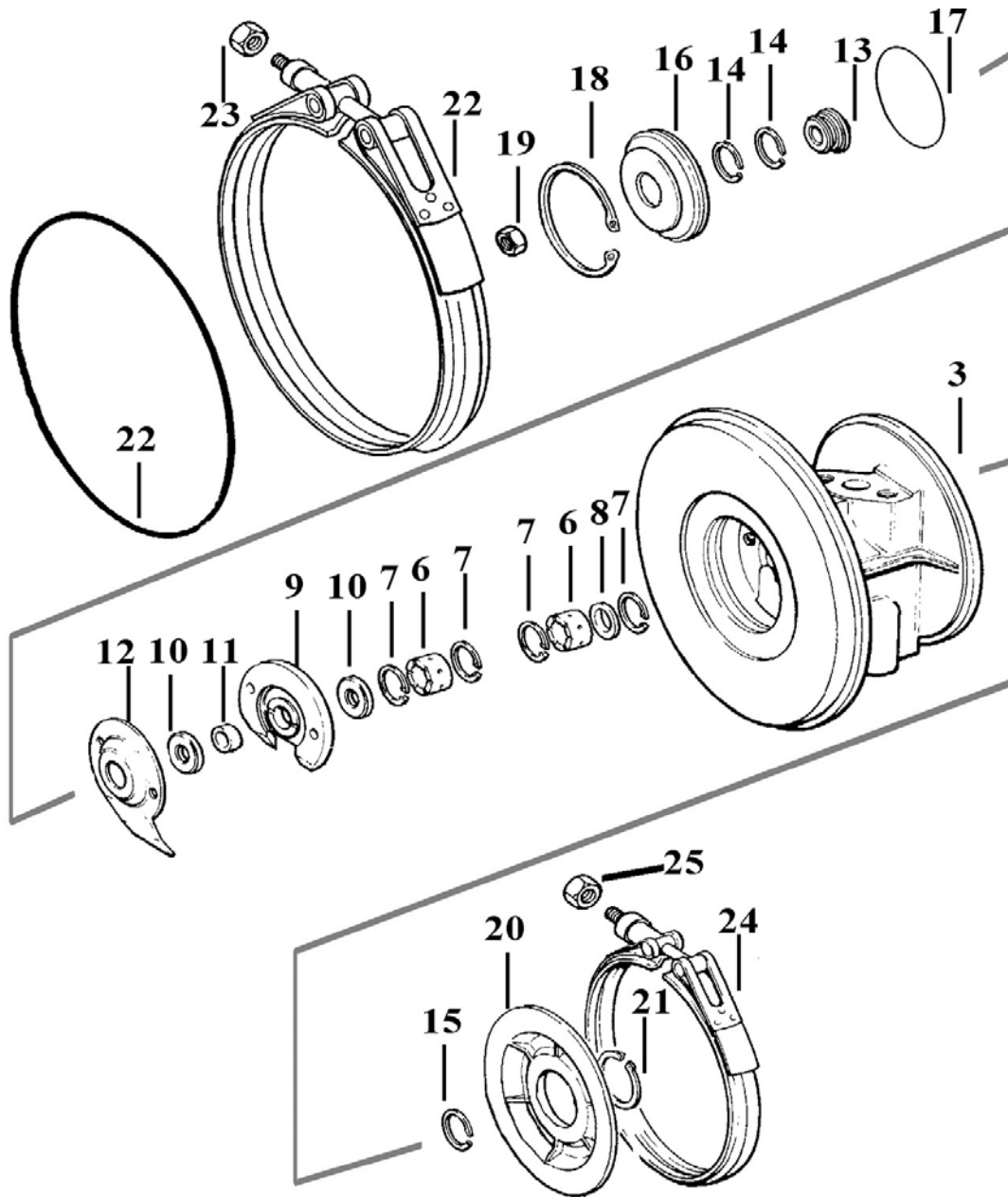
<b>Journal Bearings</b>			
To fit models with original Journal Bearing Part Number: <b>H13070 / S186148</b> (Grooved Ends & Grooved ID)			
<b>Oversize's Available</b>		<b>Part Number</b>	
OD +.010"	ID -.010"	<b>1250-040-120</b>	
OD +.010"	ID Std	<b>1250-040-124</b>	
OD Std.	ID -.010"	<b>1250-040-127</b>	

<b>Piston Rings</b>			
Oversizes Available – Turbine & Comp End			
<b>Description</b>	<b>OD</b>	<b>Width</b>	<b>Part Number</b>
Step bore ring 0.885"	+0.010"	Std	<b>1150-400-180</b>
Step bore ring 0.885"	Std	+0.010"	<b>1150-400-185</b>
Compressor ring 0.750"	+0.010"	Std	<b>1150-400-181</b>
Compressor ring 0.750"	+0.020"	Std	<b>1150-400-182</b>

# Schwitzer 4LE/F/G Type Turbos

Common Service Parts  
Oversize Service Parts  
Major Replacement Parts  
(Shaft & Wheels, Compressor Wheels etc)

## Schwitzer 4LE/F/G Type Common Service Parts



This illustration is a guide and does not necessarily show all parts accurately



# Schwitzer 4LE/F/G Type

## Repair Parts & Service Kits

All parts are available for purchase as individual components or in the following popular Repair Kits

Key	Part Description	MELETT Number	Qty Per Turbo	Repair Kit Step bore <b>1250-040-750</b>	Repair Kit All 4LE/4LF <b>1250-040-751</b>
6	Bearing	<b>1250-040-100</b>	2	2	2
7	Snap Ring (Bearing Retainer)	<b>1301-036-140</b>	4	4	4
21	Snap Ring (Heat Shield)	<b>1250-404-142</b>	1		
17	O Ring (Seal Plate)	<b>1250-030-150</b>	1	1	1
22	O Ring (Comp. Hsg)	<b>1250-040-155</b>		1	1
15	Piston Ring 0.885"	<b>1150-400-160</b>	1	1	1
14	Piston Ring 0.875"	<b>1150-400-170</b>	2	2	4
	Thrust Collar	N/A			
11	Spacer Sleeve	<b>1301-036-220</b>	1		
10	Thrust Ring	<b>1301-036-240</b>	2		
8	Oil Control Sleeve	<b>1250-040-260</b>	1	1	1
16	Insert	<b>1250-403-300</b>	1		
9	Thrust Bearing	<b>1250-040-320</b>	1	1	1
19	Shaft nut (RH)	<b>1250-040-350</b>	1	1	1
19	Shaft nut (LH)	N/A	1		
12	Oil Deflector	N/A	1		
18	Snap Ring (Insert Retainer)	<b>1250-403-140</b>	1	1	1
23	Lock nut v band	<b>1100-120-645</b>	1 / 2	2	2
	Lock washer	<b>1301-027-580</b>	10	10	10
				<b>Replace 318355</b>	<b>Replace 318350 318351 318355</b>

## Oversize Repair Parts Available

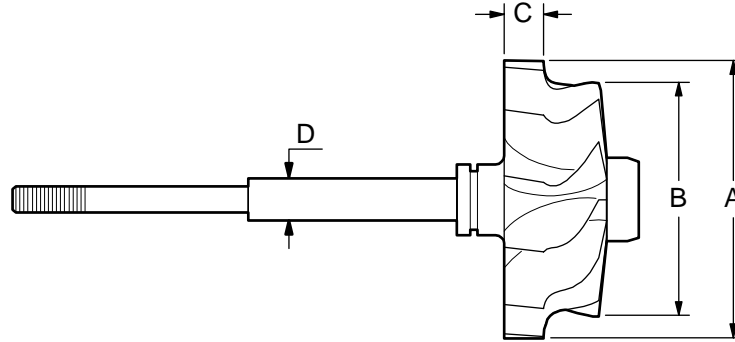
Journal Bearings		
Oversize's Available		Part Number
OD +.010"	ID -.010"	<b>1250-040-120</b>
OD +.010"	ID Std	<b>1250-040-124</b>
OD Std.	ID -.010"	<b>1250-040-127</b>

Piston Rings			
Oversizes Available – Turbine & Comp End			
Description	OD	Width	Part Number
Smooth bore ring 0.875"	+0.010"	Std	<b>1150-400-160</b>
Step bore ring 0.885"	+0.010"	Std	<b>1150-400-180</b>
Step bore ring 0.885"	Std	+0.010"	<b>1150-400-185</b>
Compressor ring 0.750"	+0.010"	Std	<b>1150-400-181</b>
Compressor ring 0.750"	+0.020"	Std	<b>1150-400-182</b>
Compressor ring 0.750"	Std	+0.006"	<b>1150-400-183</b>

# Schwitzer 4LE/F/G Type

## Major Replacement Parts - Detail

### Shaft & Wheel



Melett Part No.	To replace	(A) Inducer Ø mm's	(B) Exducer Ø mm's	(C) Tip width mm's	(D) Shaft OD	Shaft Length (Comp wheel) mm's
1152-303-435	186648	96.4	86.3	14.7	14.3	85.0
1152-303-436	186649	96.4	81.0	14.7	14.3	85.0

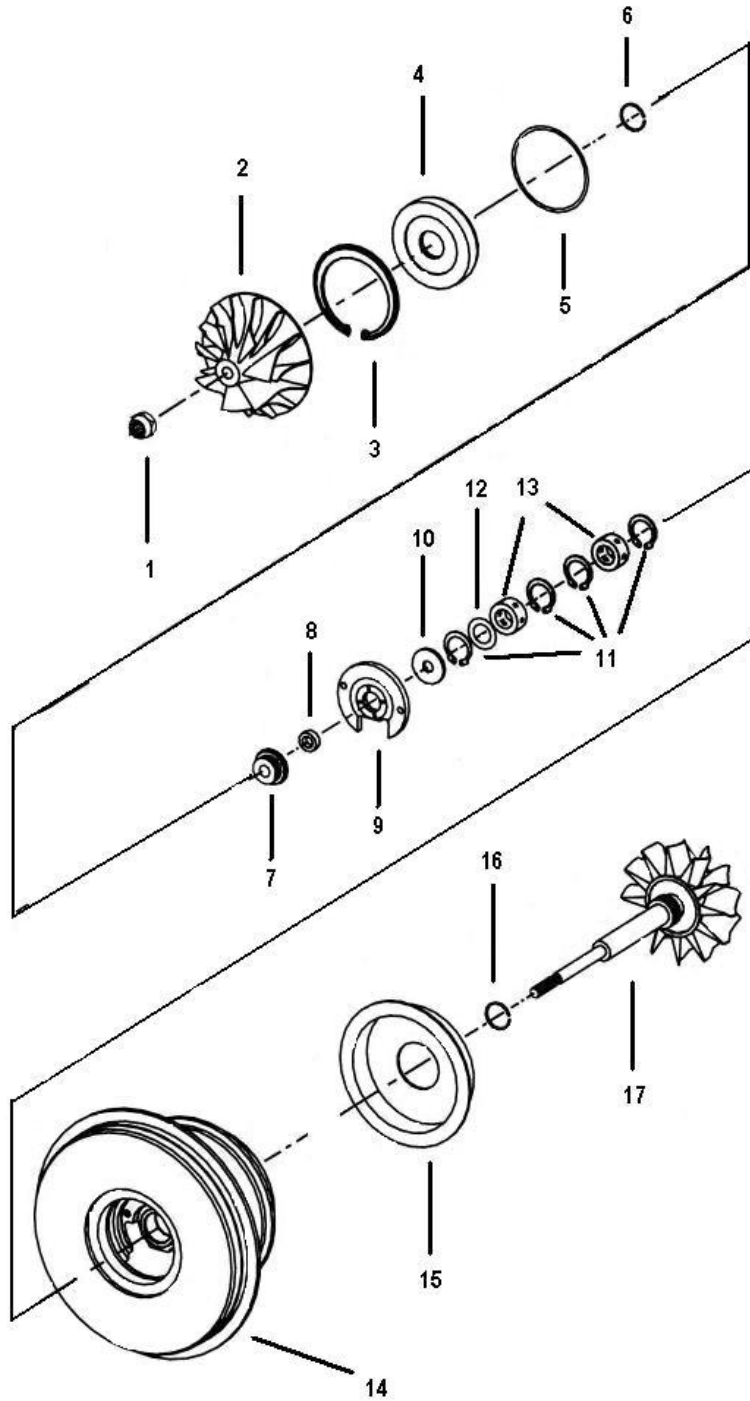
Melett's fully qualified Engineers are available to answer any technical enquiry regarding limits, tolerances, and turbo set-up configurations. Email: [Engineer@melett.com](mailto:Engineer@melett.com)

# Borg Warner (Schwitzer) S1AG S1B / S1BG Type Turbos

Common Repair Parts  
Oversize Repair Parts

# S1B Type

## Component Parts Common



This illustration is a guide and does not necessarily show all parts accurately

# S1B Type

## Repair Parts & Service Kits

All parts are available for purchase as individual components or in the following popular Repair Kits

Key	Part Description	Qty Per Turbo	MELETT Part Number	OE Part Number	Repair Kit <b>1252-201-750</b>
13	Journal Bearing (Std/Std)	2	<b>1252-201-100</b>	312758	2
11	Retaining Ring (J/Brg)	4	<b>1252-201-140</b>	312760	4
3	Retaining Ring Bevelled	1	<b>N/A</b>	311860	
5	'O' Ring (Seal Plate)	1	<b>1252-201-150</b>	311861	1
16	Piston Ring (Turb)	1	<b>1252-201-160</b>	313783	1
6	Piston Ring (Comp)	1	<b>1252-201-170</b>	311857	1
-	'O' Ring (Comp Cover)	1	<b>1252-201-155</b>	312553	1
9	Thrust Bearing	1	<b>1252-201-320</b>	169947	1
-	Bolt T/Hsg (Stainless Steel)	4	<b>1252-201-600</b>	315599	4
-	Bolts C/Cvr (Patched)	4	<b>1100-045-610</b>	312345	4
1	Shaft Nut (M6 LHT)	1	<b>1100-025-350</b>	316605	1
1	Shaft Nut (M5 x 0.8 LHT)	1	<b>1102-015-351</b>	313590	1
					Replace 318374

## Oversize Repair Parts Available

Journal Bearings		
Original Schwitzer Part Number (Std/Std): 312758		
Oversize's Available	Part Number	
OD +.005"	ID -.005"	<b>1252-201-110</b>
OD +.005"	ID Std	<b>1252-201-114</b>
OD Std	ID -.005"	<b>1252-201-117</b>
OD +.010"	ID -.010"	<b>1252-201-120</b>
OD +.010"	ID Std	<b>1252-201-124</b>
OD STD	ID -.010"	<b>1252-201-127</b>

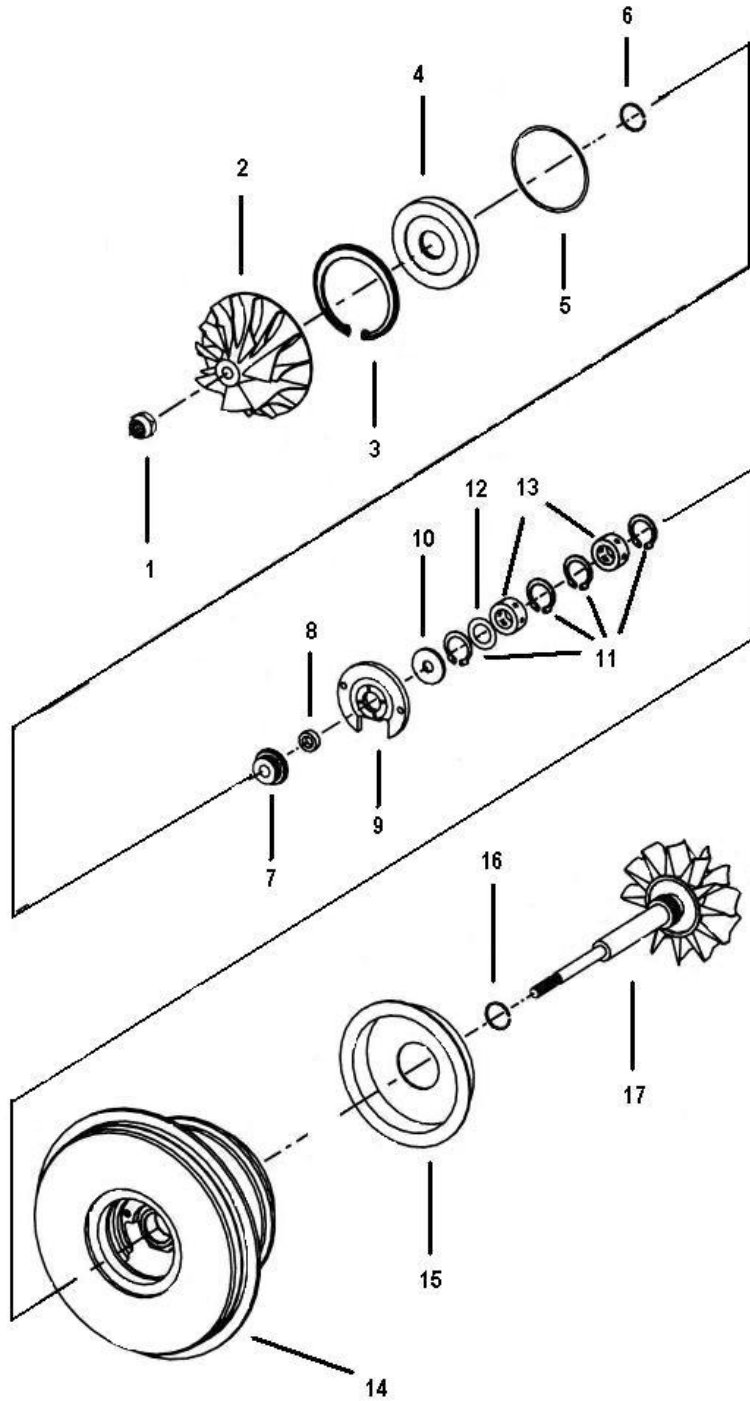
Piston Rings	
Original Schwitzer Part Number (Turb End): 313783	
Original Schwitzer Part Number (Comp End): 311857	
Oversize's Available	Part Number
Only standard sizes currently available. Please contact Melett Sales with requirements	

# Borg Warner (Schwitzer) S2A Type Turbos

Common Repair Parts  
Oversize Repair Parts

# S2A Type

## Component Parts Common



# S2A Type

## Repair Parts & Service Kits

All parts are available for purchase as individual components or in the following popular Repair Kits

Key	Description	O.E. No.	Melett No.	Qty Per turbo	Repair Kit S2A <b>1252-102-750</b>
13	Journal Bearing	194914	<b>1252-102-100</b>	2	2
11	Retaining Ring	186796	<b>1100-040-140</b>	4	4
5	'O' Ring (B/Hsg)	194281	<b>1252-202-150</b>	1	1
-	'O' Ring (Comp Cover)	193710	<b>1252-102-155</b>	1	1
16	Piston Ring T/End	312868	<b>1252-102-160</b>	1	1
6	Piston Ring C/End	186842	<b>1252-102-170</b>	1	1
10	Thrust Ring	197276	<b>1252-102-220</b>	2	2
9	Thrust Bearing S2A/B	312719	<b>1252-102-320</b>	1	1
1	Shaft Nut RHT	192512	<b>1100-040-350</b>	1	1
1	Shaft Nut LHT	168508	<b>1100-030-351</b>	1	1
-	V Band Nut M5	311589	<b>1252-102-645</b>	1	1
-	V Band Nut M8	198689	<b>1252-102-646</b>	1	1
					Replace 318377

## Oversize Repair Parts Available

Journal Bearings		
Original Schwitzer Part Number (Std/Std): 194914		
Oversize's Available		Part Number
OD +.005"	ID -.005"	<b>1252-102-110</b>
OD +.005"	ID Std	<b>1252-102-114</b>
OD Std	ID -.005"	<b>1252-102-117</b>
OD +.010"	ID -.010"	<b>1252-102-120</b>
OD +.010"	ID Std	<b>1252-102-124</b>
OD +.005"	ID -.010"	<b>1252-102-130</b>

Piston Ring – Turbine End			Piston Ring – Compressor End		
Original Schwitzer Part Number (Turb End): 312868			Original Schwitzer Part Number (Comp End): 186842		
Oversize's Available		Part Number	Oversize's Available		Part Number
OD +.010"	Wth Std	<b>1252-102-180</b>	OD +.010"	Wth Std	<b>1252-102-181</b>
OD +.010"	Wth +0.010"	<b>1252-102-184</b>			
OD +.010"	Wth +0.020"	<b>1252-102-182</b>			
OD Std	Wth +0.010"	<b>1252-102-185</b>			
OD Std	Wth +0.020"	<b>1252-102-183</b>			

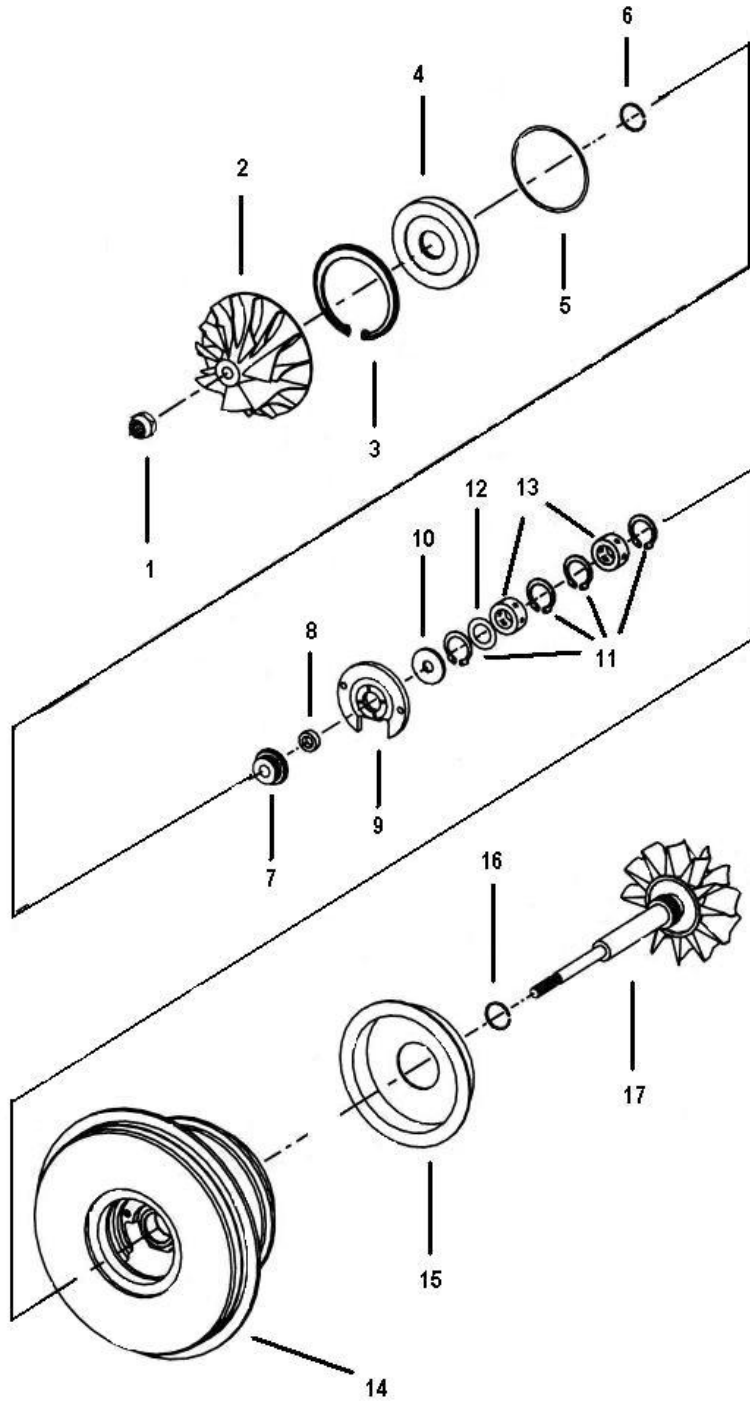


# Borg Warner (Schwitzer) S2B (Narrow bearing) Type Turbos

Common Repair Parts  
Oversize Repair Parts

## S2B (Narrow Brg) Type

### Component Parts Common



This illustration is a guide and does not necessarily show all parts accurately

## S2B (Narrow Brg) Type

### Repair Parts Kits

All parts are available for purchase as individual components or in the following popular Repair Kits

Key	Part Description	OE Number	MELETT Part Number	Qty Per turbo	Repair Kit S2B 1252-202-750
13	Journal Bearing S2B (8.7mm)	194931	1252-202-100	2	2
11	Retaining Ring	311020	1252-212-140	4	4
5	'O' Ring (B/Hsg)	194281	1252-202-150	1	1
16	Piston Ring T/End	313861	1252-202-160	1	1
6	Piston Ring C/End	186842	1252-102-170	1	1
10	Thrust Ring S2B	194289	1252-212-220	2	2
12	Wear Washer (Shim) S2B	194932	1252-212-250	1	1
9	Thrust Bearing	194179	1252-202-320	1	1
1	Shaft Nut LHT	167492	1252-212-351	1	1
1	Shaft Nut RHT	194279	N/A	1	
-	Housing Bolt	186844	1252-212-560	4	4
-	Housing Bolt	196424	1252-212-600	4	4
					Replace 318380

### Oversize Repair Parts Available

Journal Bearings		
Original Schwitzer Part Number (Std/Std): 194931		
Oversize's Available	Part Number	
OD +.005" ID -.005"	1252-202-110	
OD +.005" ID Std	1252-202-114	
OD Std ID -.005"	1252-202-117	
OD +.010" ID -.010"	1252-202-120	
OD +.010" ID Std	1252-202-124	
OD +.005" ID -.010"	1252-202-130	

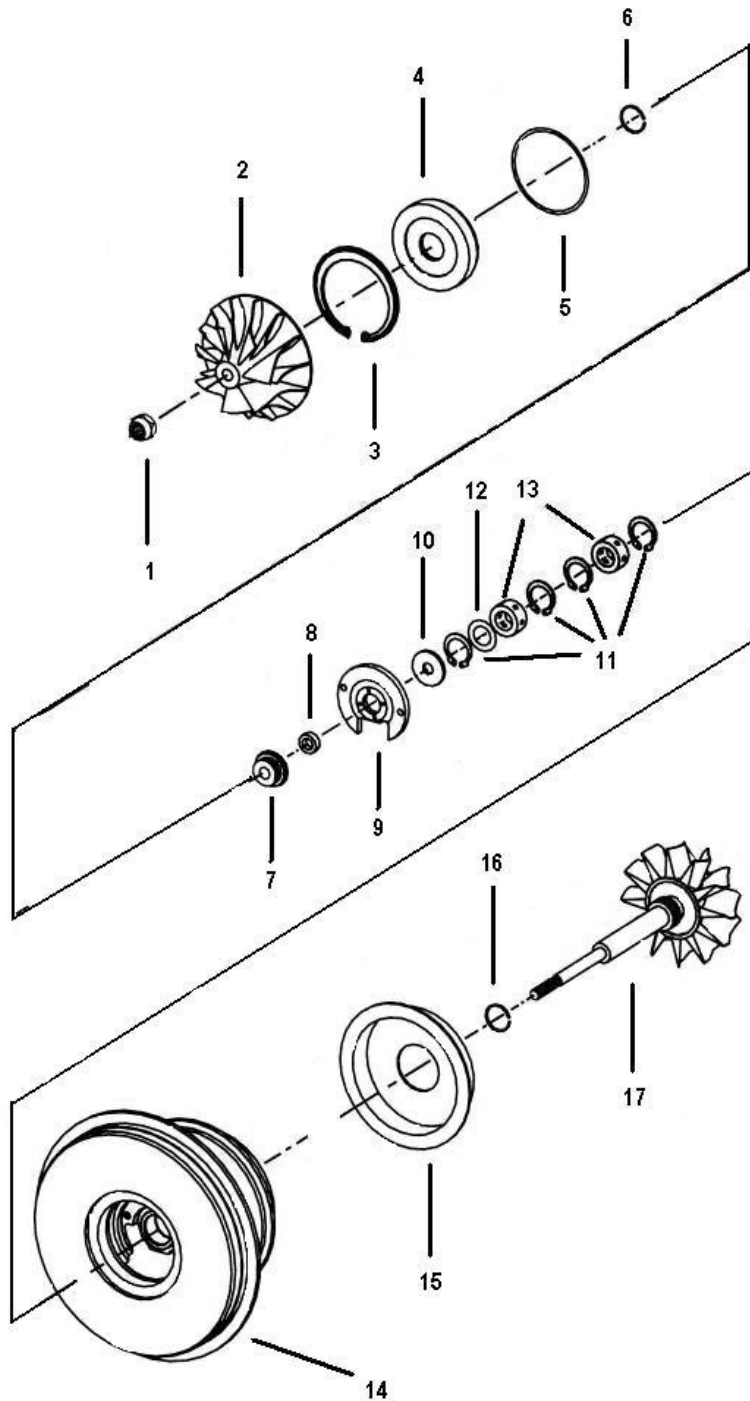
Piston Ring – Turbine End			Piston Ring – Compressor End		
Original Schwitzer Part Number (Turb End): 186135			Original Schwitzer Part Number (Comp End): 186842		
Oversize's Available		Part Number	Oversize's Available		Part Number
OD +.010	Wth Std	1252-202-180	OD +.010"	Wth Std	1252-102-181
OD Std	Wth +.010	1252-202-181			
OD +.010	Wth +.010	1252-202-182			

# Borg Warner (Schwitzer) S2B / S2C / S2E (Caterpillar) (Wide bearing) Type Turbos

Common Repair Parts  
Oversize Repair Parts

## S2B/C/E (Wide Brg) Type

### Component Parts Common



This illustration is a guide and does not necessarily show all parts accurately

## S2B/C/E (Wide Brg) Type

### Repair Parts & Service Kits

All parts are available for purchase as individual components or in the following popular Repair Kits

Key	Part Description	OE Part Number	MELETT Part Number	Qty Per Turbo	Repair Kit S2B <b>1252-212-750</b>
13	Journal Bearing S2B (9.8mm)	312455	<b>1252-212-100</b>	2	2
11	Retaining Ring	311020	<b>1252-212-140</b>	4	4
5	'O' Ring B/Hsg	194281	<b>1252-202-150</b>	1	1
-	'O' Ring Comp Cvr	193710	<b>1252-102-155</b>	1	1
16	Piston Ring T/End	313861	<b>1252-212-160</b>	1	1
6	Piston Ring C/End	186842	<b>1252-102-170</b>	1	1
10	Thrust Ring S2	194289	<b>1252-212-220</b>	2	2
12	Wear Washer (Shim) S2B	194932	<b>1252-212-250</b>	1	1
9	Thrust Bearing S2A/B	312719	<b>1252-102-320</b>	1	1
1	Shaft Nut LHT	167492	<b>1252-212-351</b>	1	1
1	Shaft Nut RHT	194279	<b>N/A</b>	1	1
-	Bolt (Seal Plate)	186844	<b>1252-212-560</b>	4	4
					Replace 318378

### Oversize Repair Parts Available

Journal Bearings		
Original Schwitzer Part Number (Std/Std): 312455		
Oversize's Available	Part Number	
OD +.005"	ID -.005"	<b>1252-212-110</b>
OD +.005"	ID Std	<b>1252-212-114</b>
OD Std	ID -.005"	<b>1252-212-117</b>
OD +.010"	ID -.010"	<b>1252-212-120</b>
OD +.010"	ID Std	<b>1252-212-124</b>
OD +.005"	ID -.010"	<b>1252-212-130</b>

Piston Ring – Turbine End			Piston Ring – Compressor End		
Original Schwitzer Part Number (Turb End): 313861			Original Schwitzer Part Number (Comp End): 186842		
Oversize's Available		Part Number	Oversize's Available		Part Number
OD +.010	Wth Std	<b>1252-202-180</b>	OD +.010"	Wth Std	<b>1252-102-181</b>
OD Std	Wth +.010	<b>1252-202-181</b>			
OD +.010	Wth +.010	<b>1252-202-182</b>			

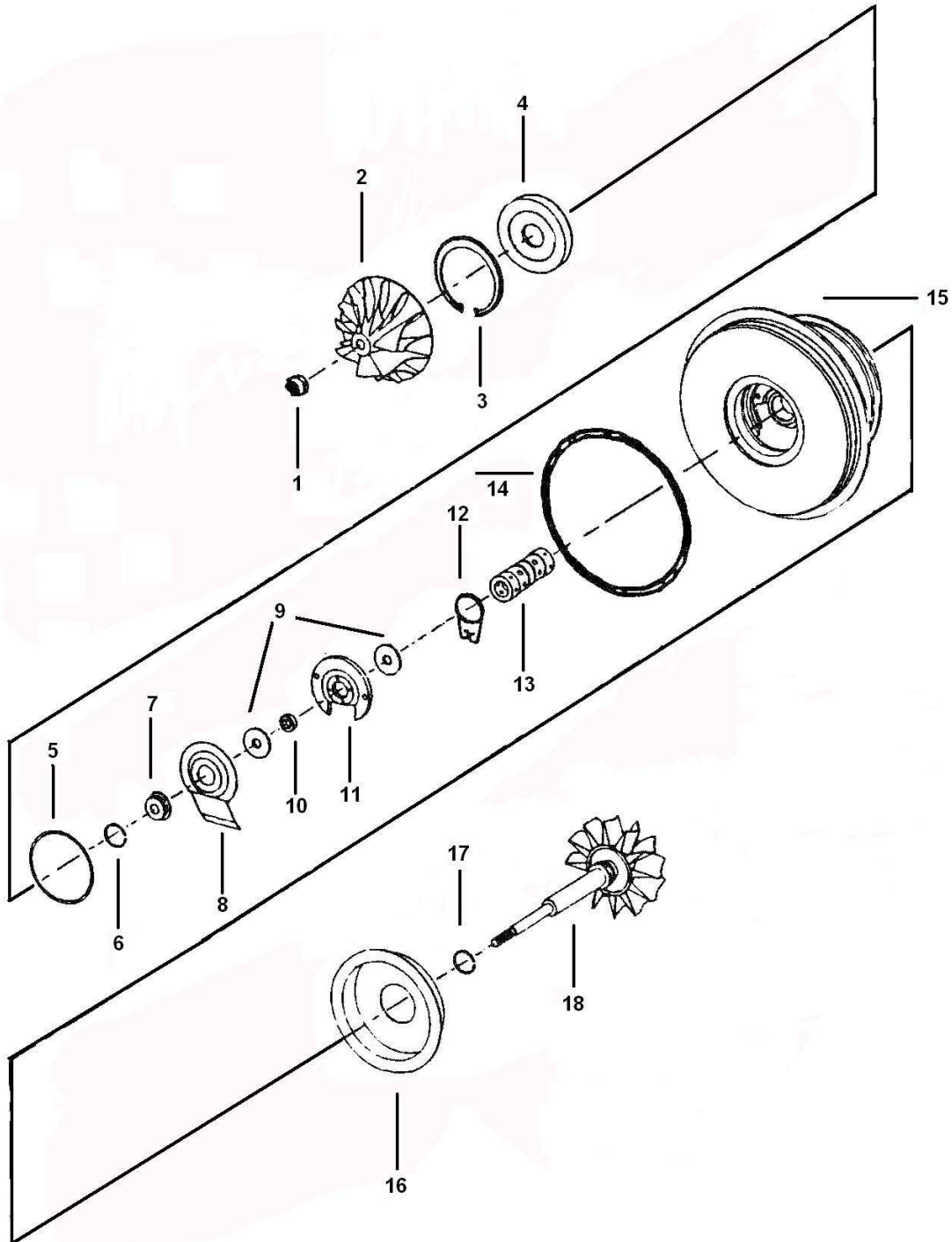
# Borg Warner (Schwitzer) S3 / S3A Type Turbos

Common Repair Parts  
Oversize Repair Parts



# S3A Type

## Component Parts Common





# S3A Type

## Repair Parts & Service Kits

All parts are available for purchase as individual components or in the following popular Repair Kits

Key	Part Description	MELETT	OE	Qty Per Turbo	Minor Repair Kit	Repair Kit	Repair Kit
		Part Number	Part Number		1252-103-755	1252-103-756	1252-103-757
13	Journal Bearing (Std/Std)	1252-103-100	189906	1	1	1	1
14	'O' Ring (C/Cvr to B/Hsg)	1252-103-150	146608	1	1	1	
5	O Ring (Insert)	1250-030-150	151242	1	1	1	1
17	Piston Ring (Turb)	1252-419-160	194798	1	1	1	
6	Piston Ring (Comp)	1252-103-170	314612	1	1	1	1
1	Shaft Nut (5/16"-24)	1100-120-350	192510	1	1	1	1
	Locknut (V-Band)	1100-120-645	316328	2	2	2	2
12	Spring Clamp	N/A	191822	1			
17	Piston Ring (Turb)	1252-103-161	341612	1			1
9	Thrust Ring S3	1252-103-240	189909	2		2	2
11	Thrust Bearing	1252-203-320	196284	1	1	1	1
1	Shaft Nut (Flanged) LHT	1252-103-350	166496	1	1	1	1
						Replace 318391	Replace 318392

## Oversize Repair Parts Available

Journal Bearings		
Original Schwitzer Part Number (Std/Std): 189906		
Oversize's Available		Part Number
OD Std	ID -.005"	1252-103-117
OD Std	ID -.010"	1252-103-127

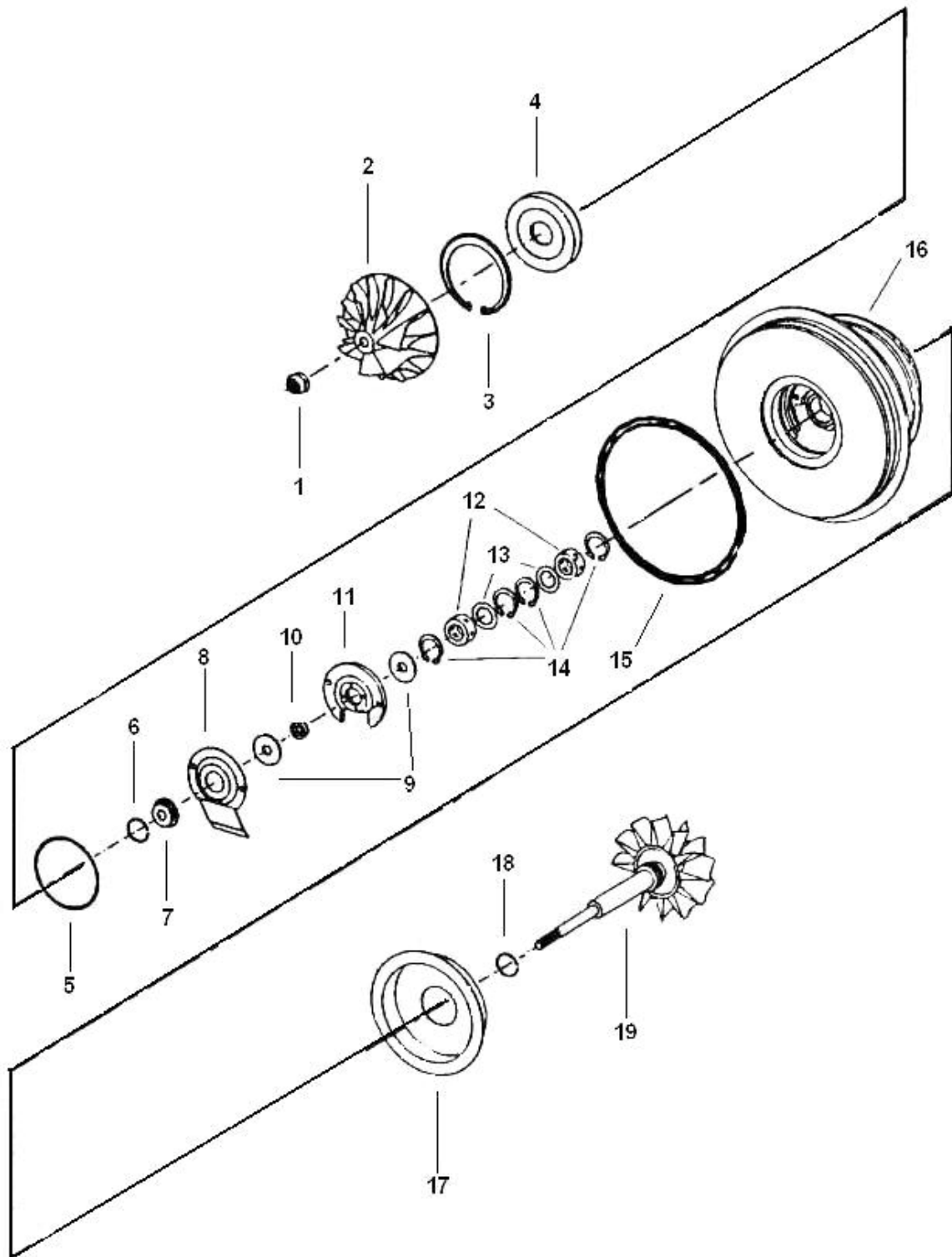
Piston Ring – Turbine End			Piston Ring – Compressor End		
Original Schwitzer Part Number (Turb End): 194798			Original Schwitzer Part Number (Comp End): 310279		
Oversize's Available		Part Number	Oversize's Available		Part Number
OD Std	Wth +0.010"	1252-419-181	OD +.010	Wth Std	1252-103-180
OD +0.010"	Wth Std	1252-419-161	OD Std	Wth +.010	1252-103-181
OD +0.020"	Wth Std	1252-419-162	OD +.010	Wth +.010	1252-103-182

# Borg Warner (Schwitzer) S3B Type Turbos

Common Repair Parts  
Oversize Repair Parts

# S3B Type

## Component Parts Common



## S3B Type

### Repair Parts & Service Kits

All parts are available for purchase as individual components or in the following popular Repair Kits

Key	Part Description	MELETT Part Number	OE Part Number	Qty Per Turbo	Repair Kit	Repair Kit
					<b>1252-203-750</b>	<b>1252-203-751</b>
12	Journal Bearing (Std/Std)	<b>1252-203-100</b>	199113	2	2	2
14	Retaining Ring	<b>1100-045-140</b>	196021	4	4	4
5	O Ring (Insert)	<b>1250-030-150</b>	151242	1	1	1
18	Piston Ring (Turb)	<b>1252-419-160</b>	194798	1	1	
6	Piston Ring (Comp)	<b>1252-103-170</b>	310279	1	1	1
1	Shaft Nut (5/16"-24)	<b>1100-120-350</b>	192510	1	1	1
	Locknut (V-Band)	<b>1100-120-645</b>	316328	2	2	2
15	'O' Ring (C/Cvr to B/Hsg)	<b>1252-103-150</b>	146608	1	1	1
18	Piston Ring (Turb)	<b>1252-203-161</b>	316193	1	1	
18	Piston Ring (Turb)	<b>1253-400-161</b>	317324	2		2
6	Piston Ring (Comp)	<b>1253-300-170</b>	167551	2		2
13	Wear Washer	<b>1252-203-250</b>	197470	2	2	2
9	Thrust Ring	<b>1252-103-240</b>	189909	2	2	2
11	Thrust Bearing	<b>1252-203-320</b>	196284	1	1	1
1	Shaft Nut (Flanged) LHT	<b>1252-103-350</b>	166496	1	1	1
					Replace 318386 318387	Replace 318388

### Oversize Repair Parts Available

Journal Bearings	
Original Schwitzer Part Number (Std/Std): 199113	
Oversize's Available	Part Number
<b>Oversize bearings in development – contact Melett Sales for latest availability</b>	

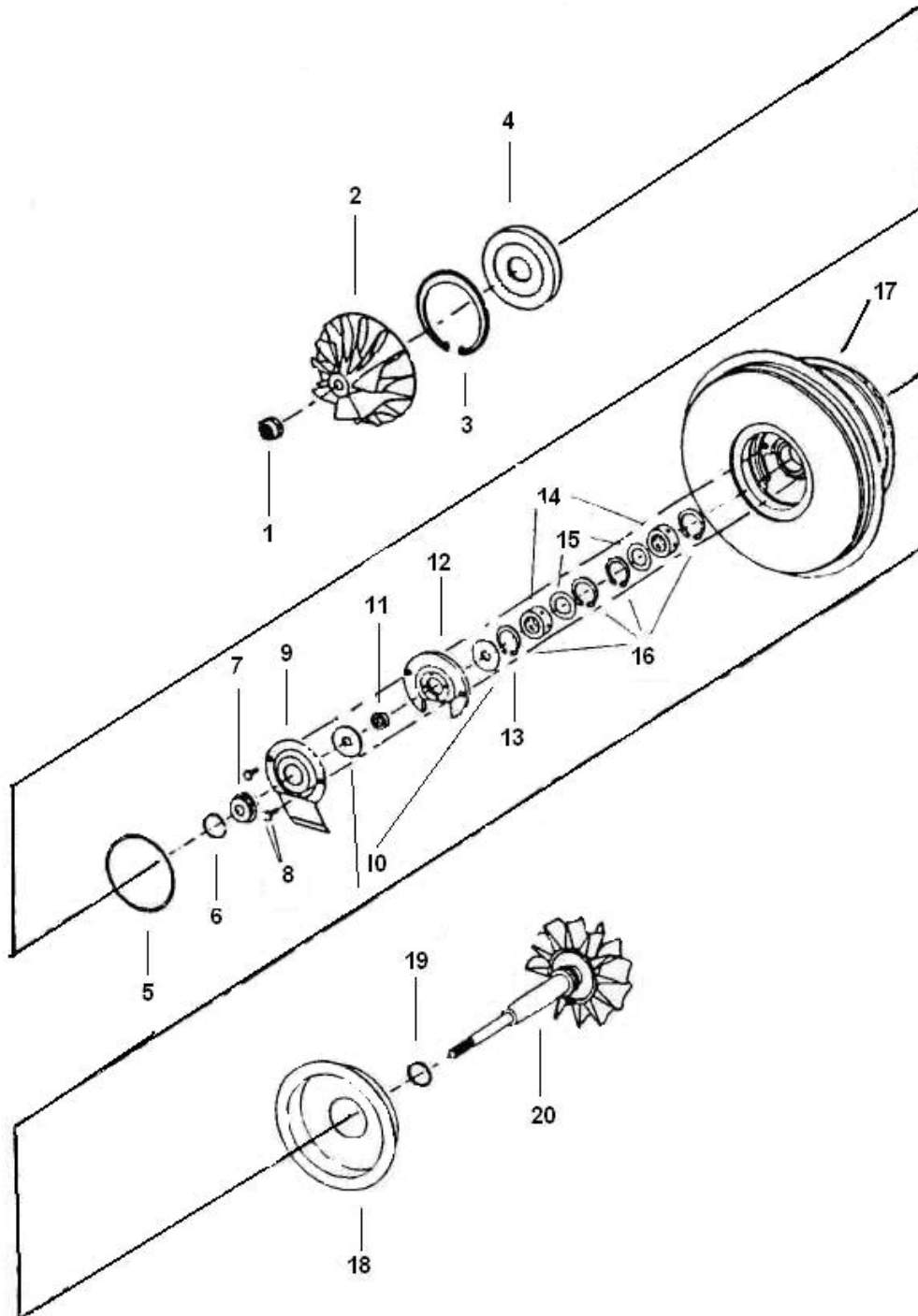
Piston Ring – Turbine End			Piston Ring – Compressor End		
Original Schwitzer Part Number (Turb End): 194798			Original Schwitzer Part Number (Comp End): 310279		
Oversize's Available		Part Number	Oversize's Available		Part Number
OD Std	Wth +0.010"	<b>1252-419-181</b>	OD +.010	Wth Std	<b>1252-103-180</b>
OD +0.010"	Wth Std	<b>1252-419-161</b>	OD Std	Wth +.010	<b>1252-103-181</b>
OD +0.020"	Wth Std	<b>1252-419-162</b>	OD +.010	Wth +.010	<b>1252-103-182</b>

# Borg Warner (Schwitzer) S4D / S4DW Type Turbos

Common Repair Parts  
Oversize Repair Parts

# S4D Type

## Component Parts Common



## S4D Type

### Repair Parts & Service Kits

All parts are available for purchase as individual components or in the following popular Repair Kits

Key	Part Description	MELETT Part Number	Qty Per Turbo	Repair Kit
14	Journal Bearing (Std/Std)	<b>1252-419-100</b>	2	See Note below Repair kits in development
16	Retaining ring (J-brg)	<b>1100-180-140</b>	4	
5	O Ring (Insert)	<b>1250-030-150</b>	1	
19	Piston Ring (Turb)	<b>1252-419-160</b>	1	
6	Piston Ring (Comp)	<b>1150-400-170</b>	2	
10	Thrust Ring	<b>1301-036-240</b>	2	
1	Shaft Nut	<b>1250-040-350</b>	1	
	Locknut (V-Band)	<b>1100-120-645</b>	2	

**These models are currently under development in 2008 – please contact Melett Sales for latest availability.**

**Parts shown on this page are available from stock.**

### Oversize Repair Parts Available

Journal Bearings		
Original Schwitzer Part Number (Std/Std): 188985		
Oversize's Available		Part Number
OD +.010"	ID -.010"	<b>1252-419-120</b>
OD +.010"	ID Std	<b>1252-419-124</b>
OD Std.	ID -.010"	<b>1252-419-127</b>
OD +.020"	ID Std	<b>1252-419-137</b>

Piston Ring – Turbine End			Piston Ring – Compressor End		
Original Schwitzer Part Number (Turb End): 194798			Original Schwitzer Part Number (Comp End): 310724		
Oversize's Available		Part Number	Oversize's Available		Part Number
OD +0.010"	Wth Std	<b>1252-419-161</b>	OD +.020	Wth Std	<b>1150-400-180</b>
OD +0.020	Wth Std	<b>1252-419-162</b>	OD +.010	OD +.010	<b>1150-400-185</b>
OD Std	Wth +0.010"	<b>1252-419-181</b>			

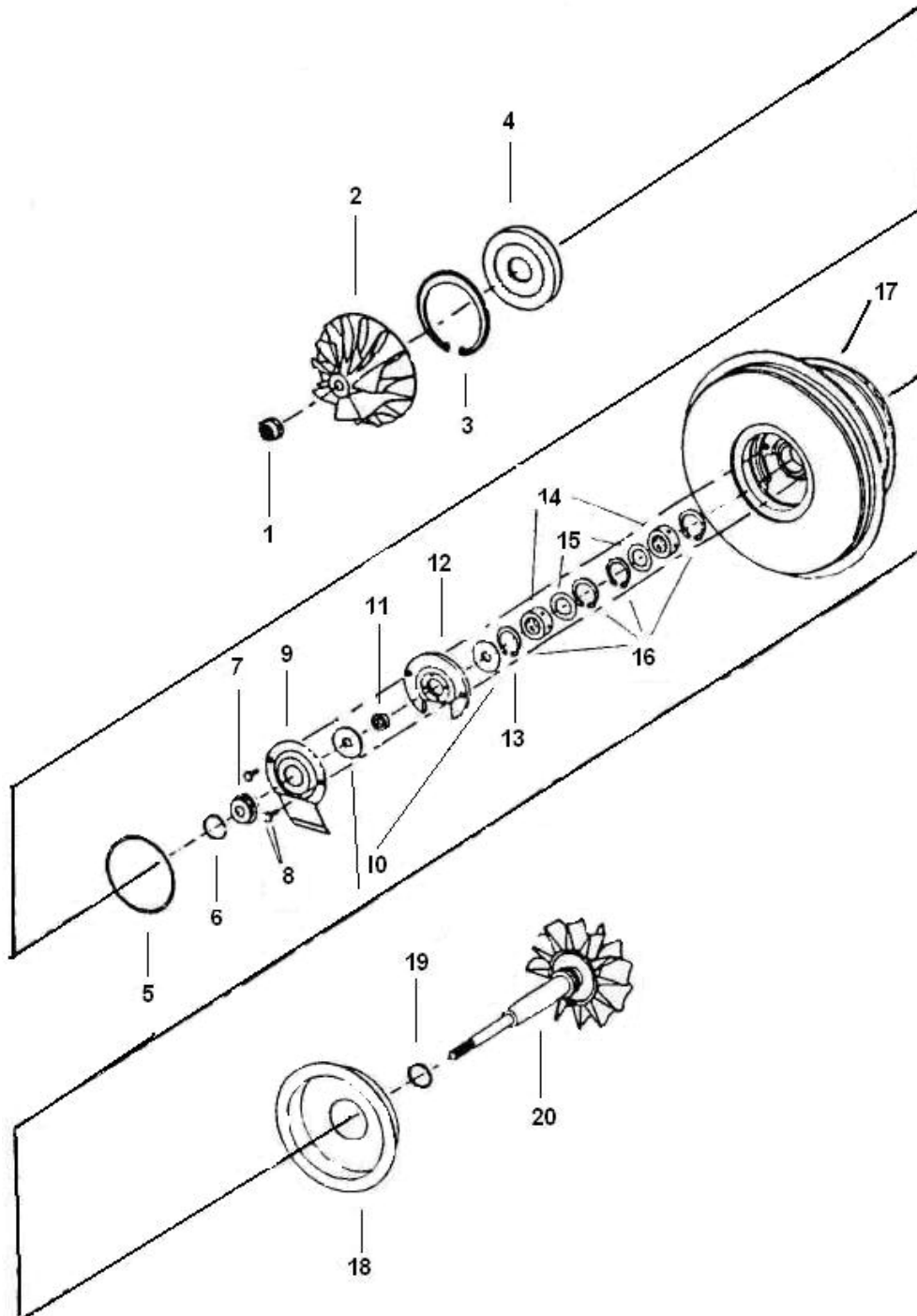
# Borg Warner (Schwitzer) S4T Type Turbos

Common Repair Parts  
Oversize Repair Parts



# S4T Type

## Component Parts Common



## S4T Type

### Repair Parts & Service Kits

All parts are available for purchase as individual components or in the following popular Repair Kits

Key	Part Description	MELETT Part Number	Qty Per Turbo	Repair Kit
14	Journal Bearing (Std/Std) (189483)	N/A	2	See Note below Repair kits in development
14	Journal Bearing (Std/Std) (139055)	1252-004-100	2	
16	Retaining ring (J-brg)	1250-404-140	4	
5	O Ring (Insert)	1250-030-150	1	
19	Piston Ring (Turb)	1252-419-160	1	
6	Piston Ring (Comp)	1150-400-170	2	
10	Thrust Ring	1301-036-240	2	
	Oil Control Sleeve	1250-404-260	1	
12	Thrust Bearing (188585)	N/A	1	
12	Thrust Bearing (313407)	N/A	1	
1	Shaft Nut	1250-040-350	1	
	Locknut (V-Band)	1100-120-645	2	

These models are currently under development in 2008 – please contact Melett Sales for latest availability.

Parts shown on this page are available from stock.

### Oversize Repair Parts Available

Oversize bearings not currently available

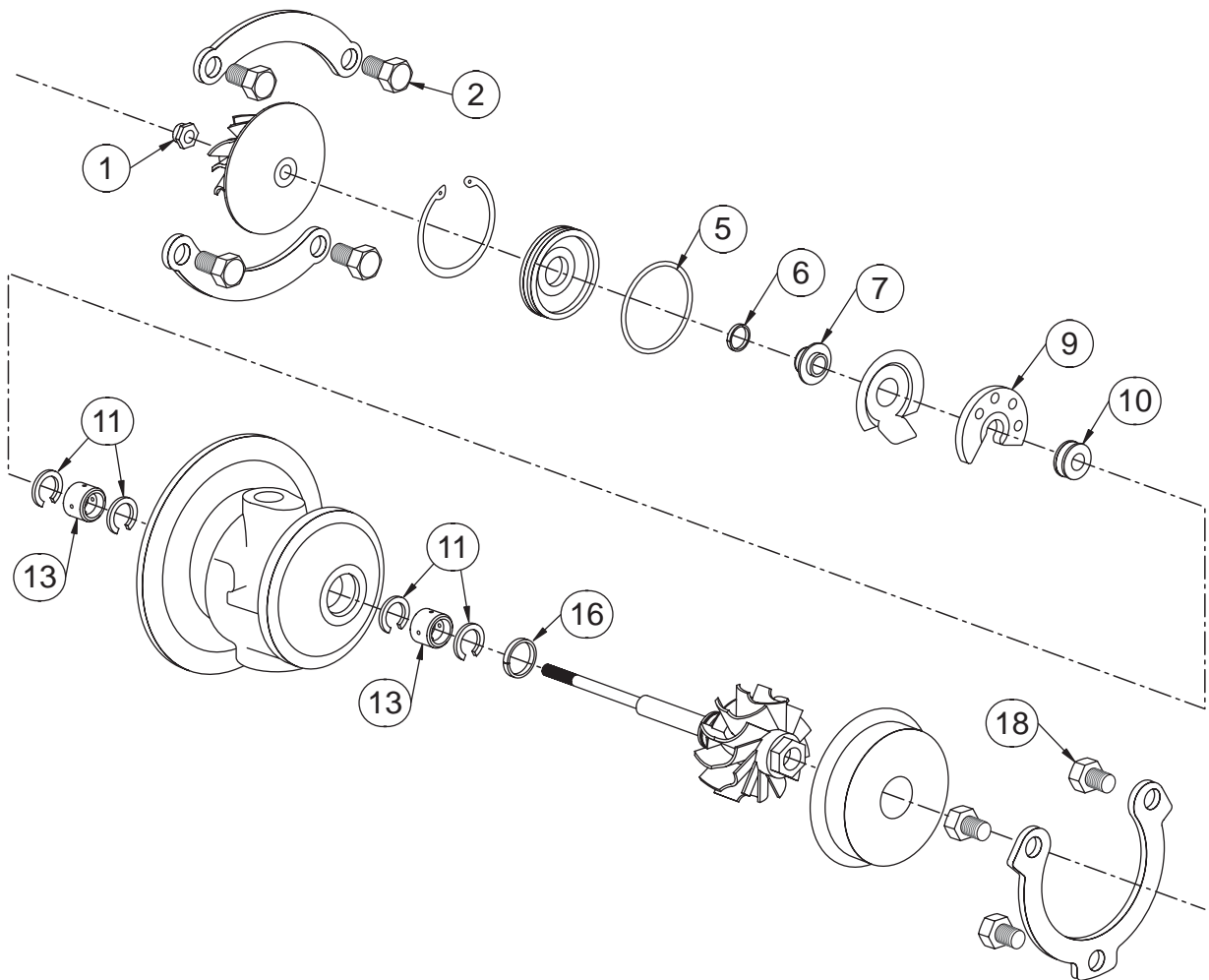
Piston Ring – Turbine End			Piston Ring – Compressor End		
Original Schwitzer Part Number (Turb End): 194798			Original Schwitzer Part Number (Comp End): 310724		
Oversize's Available	Part Number		Oversize's Available	Part Number	
OD +0.010"	Wth Std	1252-419-161	OD +.020	Wth Std	1150-400-180
OD +0.020	Wth Std	1252-419-162	OD +.010	OD +.010	1150-400-185
OD Std	Wth +0.010"	1252-419-181	OD +.010	Wth Std	1150-400-160

# Borg Warner (Schwitzer) S200 Type Turbos

Common Repair Parts  
Oversize Repair Parts

# S200 Type

## Component Parts Common



## S200 Type

### Repair Parts & Service Kits

All parts are available for purchase as individual components

**This model is currently under development in 2008 – please contact Melett Sales for latest availability.**

The following parts are available from stock as shown.

### S200

	Part Description	MELETT Part Number	OE Part Number	Qty Per Turbo	Repair Kit
11	Retaining Ring	<b>1252-212-140</b>	311020	4	
13	Journal Bearing S200 Std/Std	<b>1253-200-100</b>	167657	2	
16	Piston Ring S200 (Turb)	<b>1253-200-160</b>	315534	1	
9	Thrust bearing	<b>In Development</b>	167743	1	
6	Piston Ring S200 (Comp)	<b>1253-200-170</b>	167747	1	
5	O Ring	<b>1252-202-150</b>	196457	1	
1	Shaft Nut	<b>1152-301-351</b>	167492	1	
2	Capscrew & Lockwasher	<b>1253-200-610</b>	313015	6	
18	Turbine Bolt	<b>1252-212-600</b>	196424	4	
	O Ring C/Cover		313286	1	
	O Ring C/Cover	<b>1253-300-156</b>	313765	1	
					Similar to 318382/318383

# Borg Warner (Schwitzer) S300 Type Turbos

Common Repair Parts  
Oversize Repair Parts

## S300 Type

### Component Parts Common

Illustration for this turbo is not currently available – please contact Melett Engineers for latest availability of technical information.

# S300 Type

## Repair Parts & Service Kits

All parts are available for purchase as individual components or in the following popular Repair Kits

Key	Part Description	MELETT Part Number	OE Part Number	Qty Per Turbo	Repair Kit <b>1252-202-750</b>
13	Journal Bearing Std/Std	<b>1253-300-100</b>	167416	2	2
18	Piston Ring (Turb)	<b>1253-300-160</b>	315535	1	1
7	Piston Ring (Comp)	<b>1253-300-170</b>	186841	1	1
12	Retaining Ring J-Brg	<b>1152-302-140</b>	167548	4	4
24	O Ring (Comp Cover)	<b>1153-050-155</b>	315377	1	1
2	Shaft Nut	<b>1153-050-350</b>	167451	1	1
6	O Ring (Seal Plate)	<b>1252-202-150</b>	196457	1	1
24	O-Ring C/Cvr (OD139mm)	<b>1253-300-156</b>	313765	1	1
10	Thrust Collar/Sleeve	<b>1253-300-240</b>	167546	1	1
8	Thrust Flinger	<b>1253-300-200</b>	167542	1	
11	Thrust Bearing	<b>1253-300-320</b>	167558	1	1
17	Bolt & Washer (C/Cvr Patched)	<b>1253-300-610</b>	167048	8	8
21	Bolt (Stainless) Turb Hsg	<b>1301-031-600</b>	314631	6	6
					Replace 318380



# Borg Warner (Schwitzer) S400 Type Turbos

Common Repair Parts  
Oversize Repair Parts

# S400 Type

## Component Parts Common

Illustration for this turbo is not currently available – please contact Melett Engineers for latest availability of technical information.

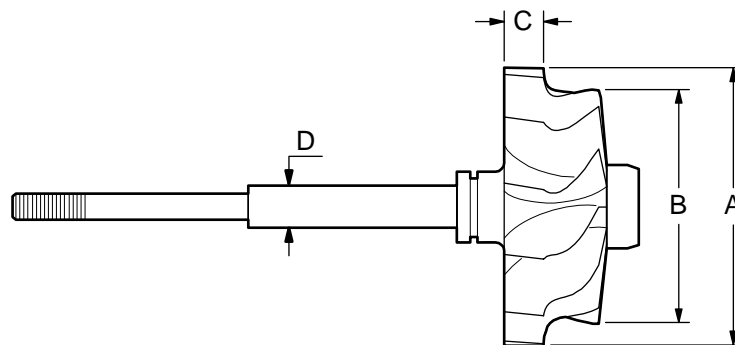
## S400 Type

### Repair Parts & Service Kits

All parts are available for purchase as individual components or in the following popular Repair Kits

Key	Part Description	MELETT Part Number	OE Part Number	Qty Per Turbo	Repair Kit <b>1253-400-750</b>	Repair Kit + Thrust Flinger <b>1253-400-755</b>
13	Bearing S400 Std/Std	<b>1253-400-100</b>	167787	2	2	2
	V-Band Nut HX50/55	<b>1153-050-645</b>	316328	2	2	2
6	O Ring (Insert 65mm)	<b>1250-030-150</b>	151242	1	1	1
12	Retaining Ring (J-Brg)	<b>1253-400-140</b>	167788	4	4	4
18	Piston Ring (Turb. 26mmOD)	<b>1253-400-160</b>	315536	1	1	1
18	Piston Ring T/End.	<b>1253-400-161</b>	317324	1	1	1
18	Piston Ring (T/End 22.5mm)	<b>1253-400-162</b>	317589	2	2	2
7	Piston Ring Comp End	<b>1253-400-170</b>	167551	1	1	1
10	Thrust Collar/Sleeve	<b>1253-400-240</b>	167785	1	1	1
11	Thrust Bearing	<b>1253-400-320</b>	167786	1	1	1
8	Thrust Flinger	<b>1253-400-200</b>	167781	1		1
					Replace 318396 318397	

## Shaft & Wheel



Melett Part No.	To replace	(A) Inducer Ø mm's	(B) Exducer Ø mm's	(C) Tip width mm's	(D) Shaft OD
<b>1253-400-435</b>	315273	83.6	74.4	13.5	14.5

Melett's fully qualified Engineers are available to answer any technical enquiry regarding limits, tolerances, and turbo set-up configurations. Email: [Engineer@melett.com](mailto:Engineer@melett.com)

# Borg Warner (Schwitzer)

## S500 Type Turbos

Common Repair Parts  
Oversize Repair Parts

# S500 Type

## Component Parts Common

Illustration for this turbo is not currently available – please contact Melett Engineers for latest availability of technical information.

## S500 Type

### Repair Parts & Service Kits

All parts are available for purchase as individual components

**This model is currently under development in 2008 – please contact Melett Sales for latest availability.**

The following parts are available from stock as shown.

### S500

	Part Description	MELETT Part Number	OE Part Number	Qty Per Turbo
	Retaining Ring	<b>1250-404-140</b>	134058	4
	Journal Bearing	<b>1252-004-100</b>	139055	2
	Piston Ring S500 (Turb)	<b>1253-500-160</b>	171519	2
	Piston Ring S500 (Comp)	<b>1253-500-170</b>	167782	2
	V-Band Nut	<b>1253-400-645</b>	316328	3