

Borg Warner (KKK) Contents

| Turbo Model | Catalogue Contents | Page No. | Notes |
|-------------|--|----------|----------|
| 3L | See Holset 3L Section | 1 | |
| 4LE/F/G | Repair Kits / Oversize Bearings & Piston Rings | 5 | |
| 4LE/F/G | Major Parts (Shaft Wheels, Comp Wheels) | 6 | |
| KP31 | Repair Kits | 9 | NEW |
| KP/BV35 | Repair Kits | 13 | NEW |
| KP/BV35 | Major Parts (Shaft Wheels , Comp Wheels) | 14 | NEW |
| KP/BV39 | Repair Kits | 17 | NEW |
| KP/BV39 | Major Parts (Shaft Wheels , Comp Wheels) | 18 | NEW |
| K03/K04 | Repair Kits / Oversize Bearings & Piston Rings | 21 | |
| K03/K04 | Chra Kits and Complete Chra's | 22 | |
| K03/K04 | Major Parts (Shaft Wheels) | 23 | |
| K03/K04 | Major Parts (Comp Wheels, Bearing Housings) | 24 | Updated |
| K03/K04 | Turbine Housings | 25 | Updated |
| K14/K16 | Repair Kits / Oversize Bearings & Piston Rings | 29 | Updated |
| K14/K16 | Major Parts (Shaft Wheels) | 30 | Updated |
| K14/K16 | Major Parts (Comp Wheels) | 31 | |
| K24 | Repair Kits / Oversize Bearings & Piston Rings | 35 | NEW KITS |
| K24 | Major Parts (Comp Wheels) | 36 | |
| K26 | Repair Kits | 39 | |
| K26 | Oversize Bearings & Piston Rings | 40 | |
| K27 | Repair Kits | 43 | |
| K27 | Oversize Bearings & Piston Rings | 44 | |
| K27 | Major Parts (Shaft Wheel) | 45 | |
| K27 | Major Parts (Comp Wheel) | 46 | |
| K27 | Major Parts (Bearing Housing, Backplate Turbine Housing) | 47 | |
| K28 / K29 | Repair Kits | 51 | |
| K28/K29 | Oversize Bearings & Piston Rings | 52 | |
| K31 | Repair Kits / Oversize Bearings & Piston Rings | 55 | NEW |
| K33 | Repair Kits / Oversize Bearings & Piston Rings | 59 | |
| K33 | Major Parts (Comp Wheels) | 60 | |
| K36/K37 | Repair Kits / Oversize Bearings & Piston Rings | 63 | |
| K36/K37 | Major Parts (Shafts , Comp Wheels) | 64 | |

Borg Warner (KKK) 3L Type Turbos

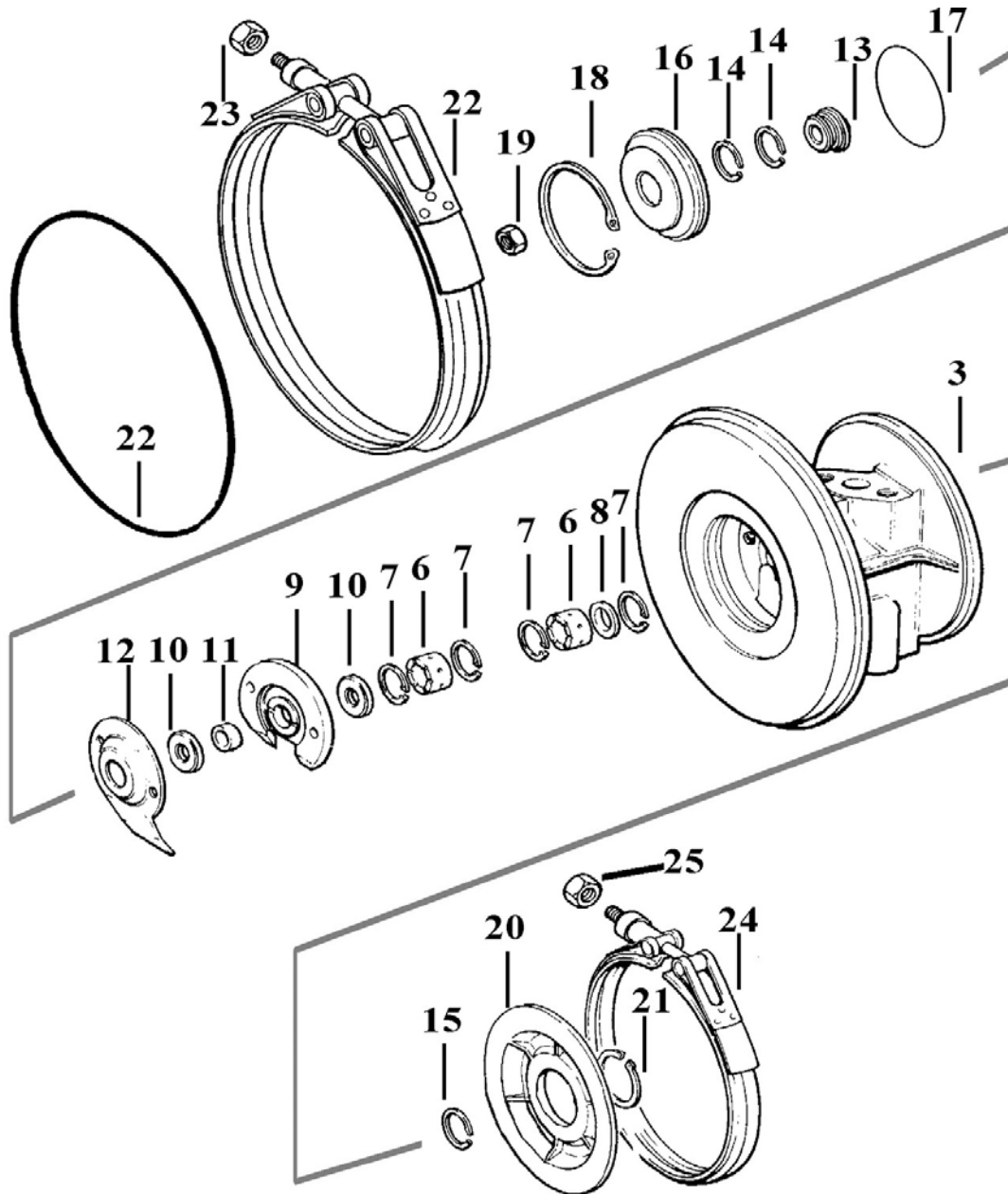
Melett still stocks repair kits and some parts for 3L turbos.

All 3L parts available can be found in the Holset 3L section of this catalogue.

Borg Warner (KKK) 4LE/F/G Type Turbos

Common Service Parts
Oversize Service Parts
Major Replacement Parts
(Shaft & Wheels, Compressor Wheels etc)

KKK 4LE/F/G Type Common Service Parts



This illustration is a guide and does not necessarily show all parts accurately

KKK 4LE/F/G Type

Repair Parts & Service Kits

All parts are available for purchase as individual components or in the following popular Repair Kits

| Key | Part Description | MELETT Number | Qty Per Turbo | Repair Kit All 1301-504-752 |
|-----|------------------------------|---------------|---------------|---|
| 6 | Bearing | 1250-040-100 | 2 | 2 |
| 7 | Snap Ring (Bearing Retainer) | 1301-036-140 | 4 | 4 |
| 21 | Snap Ring (Heat Shield) | 1250-404-142 | 1 | |
| 17 | O Ring (Seal Plate) | 1250-030-150 | 1 | 1 |
| 22 | O Ring (Ø176.8 Comp. Hsg) | 1250-040-155 | 1 | 1 |
| 22 | O Ring (Ø210 Comp. Hsg) | 1301-036-150 | 1 | 1 |
| 15 | Piston Ring 0.885" | 1150-400-160 | 1 | 1 |
| 14 | Piston Ring 0.875" | 1150-400-170 | 2 | 4 |
| | Thrust Collar | N/A | | |
| 11 | Spacer Sleeve | 1301-036-220 | 1 | |
| 10 | Thrust Ring | 1301-036-240 | 2 | |
| 8 | Oil Control Sleeve | 1250-040-260 | 1 | 1 |
| 16 | Insert | 1250-403-300 | 1 | |
| 9 | Thrust Bearing | 1250-040-320 | 1 | 1 |
| 19 | Shaft nut (RH) | 1250-040-350 | 1 | 1 |
| 19 | Shaft nut (LH) | N/A | 1 | |
| 12 | Oil Deflector | N/A | 1 | |
| 18 | Snap Ring (Insert Retainer) | 1250-403-140 | 1 | 1 |
| 23 | Lock nut v band | 1100-120-645 | 1 / 2 | 2 |
| | Lock washer | 1301-027-580 | 10 | |
| 24 | V clamp turbine | N/A | 1 | |
| 22 | V clamp compressor | N/A | 1 | |
| | | | | Replace 5232-711-0004/6/10 5336-711-0004/16 |

Oversize Repair Parts Available

| Journal Bearings | | |
|----------------------|-----------|--------------|
| Oversize's Available | | Part Number |
| OD +.010" | ID -.010" | 1250-040-120 |
| OD +.010" | ID Std | 1250-040-124 |
| OD Std. | ID -.010" | 1250-040-127 |

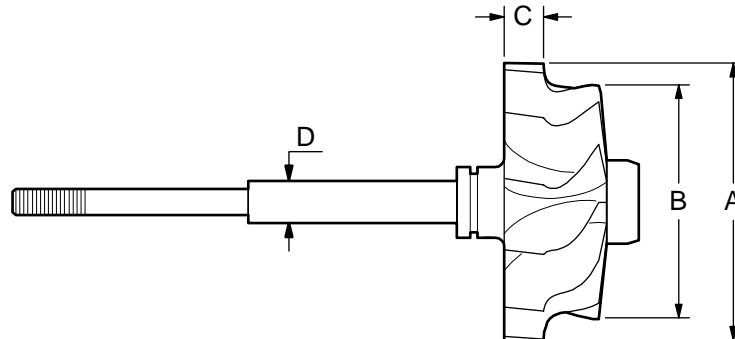
| Piston Rings | | | |
|--|---------|---------|--------------|
| Oversizes Available – Turbine & Comp End | | | |
| Description | OD | Width | Part Number |
| Smooth bore ring 0.875" | +0.010" | Std | 1150-400-160 |
| Step bore ring 0.885" | +0.010" | Std | 1150-400-180 |
| Step bore ring 0.885" | Std | +0.010" | 1150-400-185 |

KKK

4LE/F/G Type

Major Replacement Parts - Detail

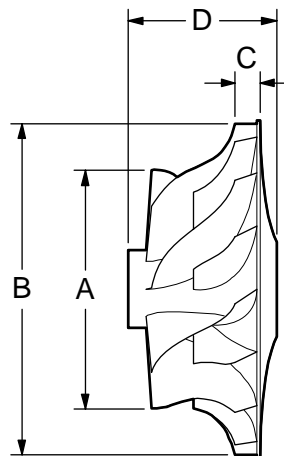
Shaft & Wheel



| Melett Part No. | To replace | (A) Inducer ϕ mm's | (B) Exducer ϕ mm's | (C) Tip width mm's | (D) Shaft OD | Shaft Length (Comp wheel) mm's |
|-----------------|---------------|-------------------------------|-------------------------------|--------------------------|-----------------|--------------------------------------|
| 1152-303-435 | 5232-120-2125 | 96.4 | 86.3 | 14.7 | 14.3 | 85.0 |
| 1152-303-436 | 5232-120-2130 | 96.4 | 81.0 | 15.0 | 14.3 | 85.0 |

Melett's fully qualified Engineers are available to answer any technical enquiry regarding limits, tolerances, and turbo set-up configurations. Email: Engineer@melett.com

Compressor Wheel

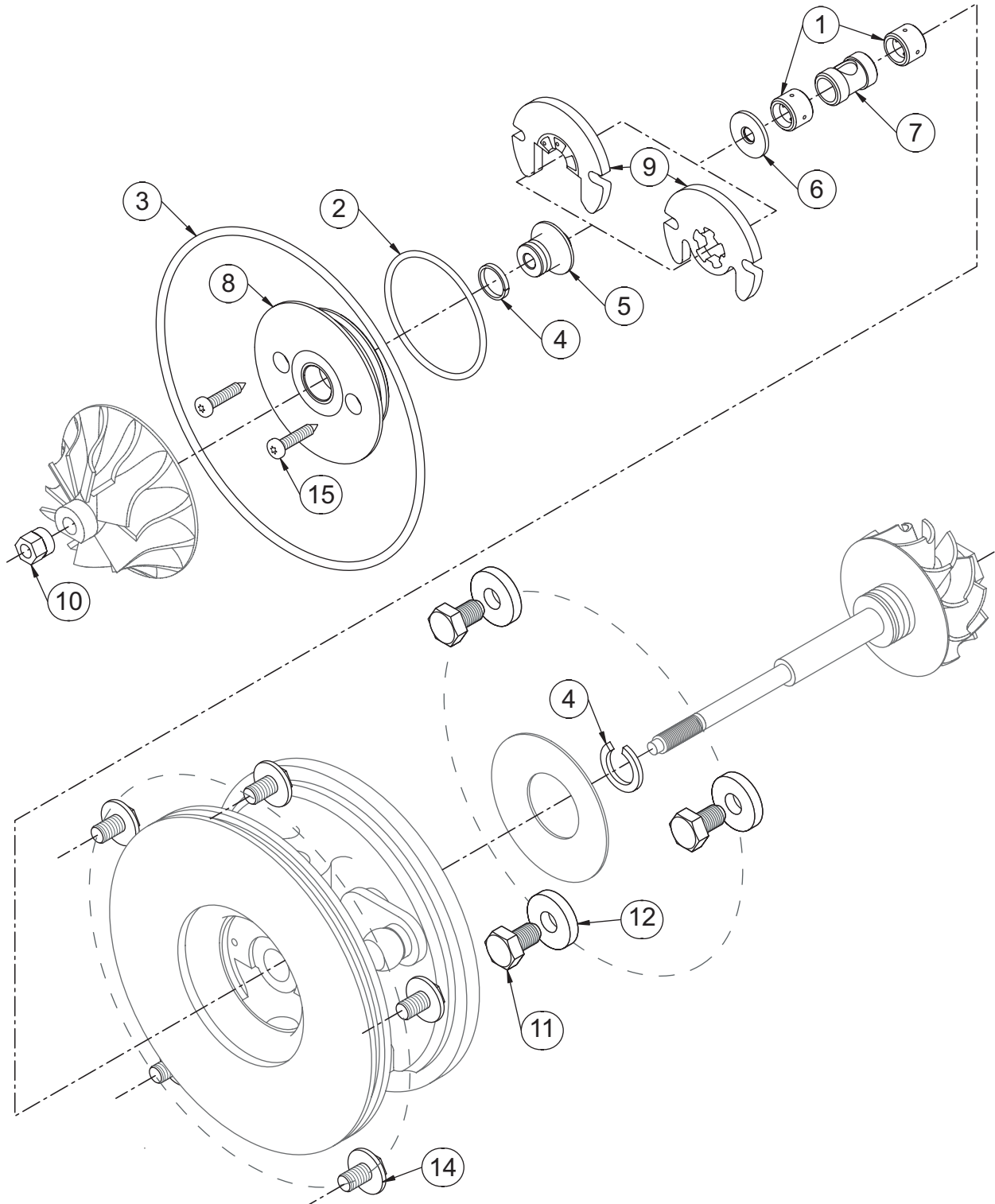


| Melett Part No. | To replace | Trim | (A) Inducer ϕ mm's | (B) Exducer ϕ mm's | (C) Tip width mm's | (D) Overall Height mm's | No. of Blades |
|-----------------|------------|------|-------------------------------|-------------------------------|--------------------------|-------------------------------|------------------|
| 1250-040-400 | 159608 | 302 | 62.5 | 93.7 | 8.0 | 36.0 | 12 |

Borg Warner KP31 Type Turbos

Common Service Parts
Repair Kits

Borg Warner KP31 Common Service Parts



Borg Warner KP31 Type

Repair Parts & Service Kits

All parts are available for purchase as individual components or in the following popular Repair Kits

| Key | Part Description | OE Part Number | Melett Part Number | Major Kit KP31 1303-031-750 | Universal Kit KP35/39 1303-035-756 |
|-----|------------------------------------|----------------|---------------------|--------------------------------|---------------------------------------|
| 1 | Journal bearing KP31/35/39 Std/Std | 5431-155-1002 | 1303-035-100 | 2 | 2 |
| 2 | O-ring Insert to B/Hsg | 5431-158-0501 | 1303-035-150 | 1 | 1 |
| 3 | O-ring KP31 C/Cvr (Ø63mm) | 5431-158-0502 | 1303-031-155 | 1 | 1 |
| 3 | O-ring KP35 C/Cvr (Ø102mm) | 5314-158-0500 | 1303-035-155 | | 1 |
| 3 | O-ring KP35 C/Cvr (Ø92mm) | 5435-158-0501 | 1303-035-156 | | 1 |
| 3 | O-ring KP39 C/Cvr (Ø76mm) | 5439-158-0500 | 1303-039-155 | | 1 |
| 4 | Piston Ring (Turb & Comp) | 5431-127-0102 | 1303-035-160 | 2 | 2 |
| 5 | Flinger sleeve (12.6mm F/back) | 5431-127-0402 | 1303-035-200 | 1 | 1 |
| 5 | Flinger sleeve (9.8mm S/back) | 5431-127-0405 | 1303-035-201 | | 1 |
| 6 | Thrust ring | 5431-124-0000 | 1303-035-220 | 1 | 1 |
| 7 | Spacer (J/ Brg) | 5431-109-4303 | N/A | | |
| 8 | Insert/Seal Plate KP31 | 5431-152-3002 | N/A | | |
| 9 | Thrust bearing (180 deg) | 5431-155-1301 | 1303-035-320 | 1 | |
| 9 | Thrust bearing (360 deg) | ? | 1303-035-321 | | 1 |
| 10 | Shaft nut M4x0.5 | 5431-128-5002 | 1303-035-351 | 1 | 1 |
| 12 | Clamp Washer KP39 (Turbine) | 5900-109-5800 | 1303-035-580 | | 2 |
| 11 | Bolt KP35 Turbine (M6x12) | 5900-117-4503 | 1303-035-600 | | 3 |
| 14 | Bolt (Flanged) KP35 C/Cvr | 500-3536-0612 | 1303-035-610 | | 6 |
| 15 | Screw (M3 Socket-head) Seal Plate | 5900-117-4507 | 1303-035-620 | 2 | 2 |
| 11 | Bolt (M6x10) KP39 Turbine | 5900-109-0400 | 1303-039-600 | | 4 |

Technical Note: The piston ring for KP31/5/9 turbo is dimensionally the same as K03 but they are not interchangeable. The KP turbo runs hotter and requires higher temperature material. Ensure the correct ring is used for a quality repair.

Melett recommend the earlier 180° thrust bearing is replaced by the later 360° Thrust bearing as an upgrade. The earlier 180° thrust bearing is available separately or part of various other kits.

Oversize Repair Parts Available

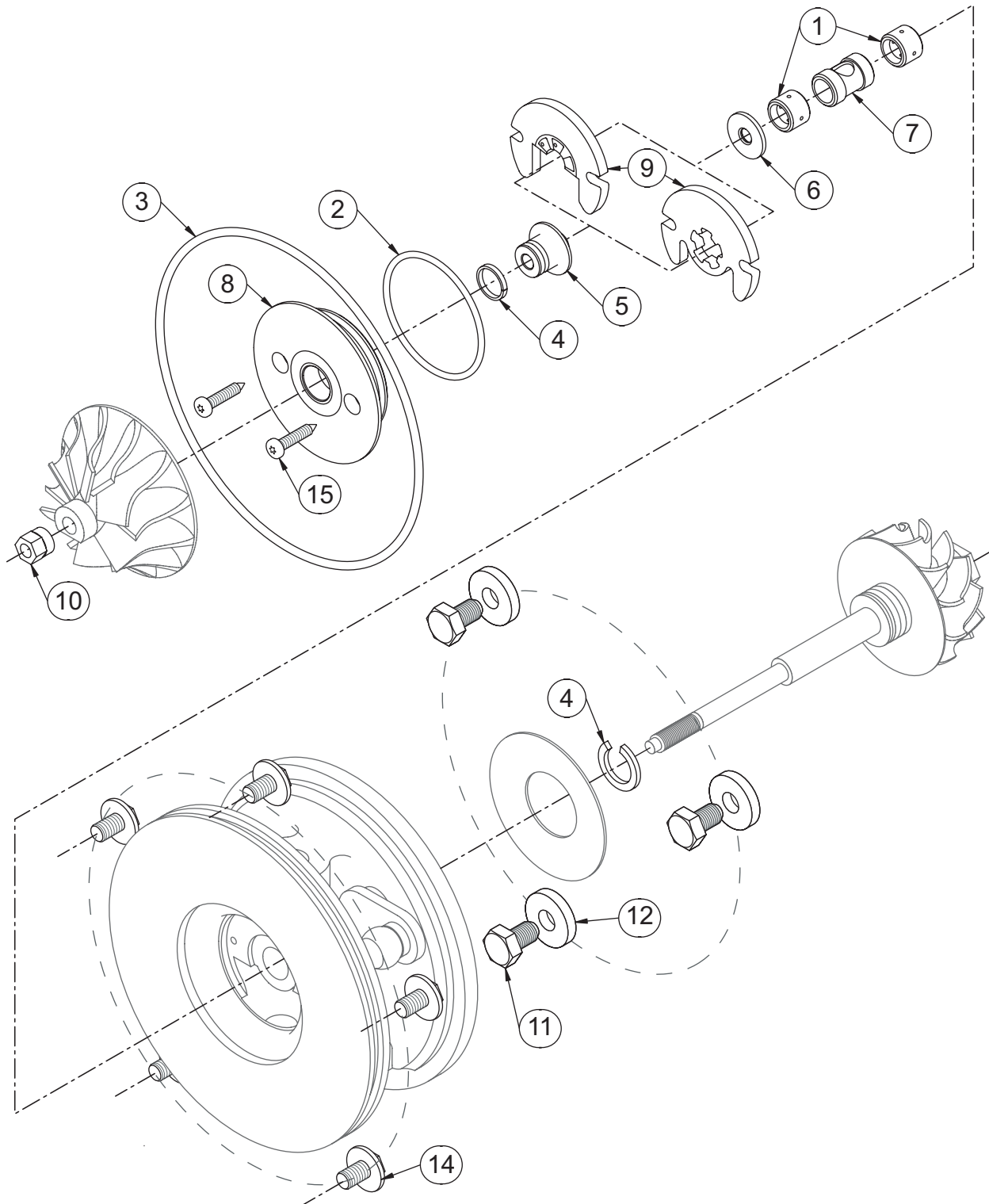
Melett do not offer oversize parts for the KP turbos. The turbo design does not allow for material removal during repair and oversizing should not be attempted.

Borg Warner KP/BV35 Type Turbos

Common Service Parts
Repair Kits

KP/BV35 Type

Common Service Parts



KP/BV35 Type Repair Parts & Service Kits

All parts are available for purchase as individual components or in the following popular Repair Kits

| Key | Part Description | OE Part Number | Melett Part Number | Major Kit Flatback 1303-035-752 | Major Kit Superback 1303-035-753 | Universal Kit KP35/39 1303-035-756 |
|-----|------------------------------------|----------------|---------------------|------------------------------------|-------------------------------------|---------------------------------------|
| 1 | Journal bearing KP31/35/39 Std/Std | 5431-155-1002 | 1303-035-100 | 2 | 2 | 2 |
| 2 | O-ring Insert to B/Hsg | 5431-158-0501 | 1303-035-150 | 1 | 1 | 1 |
| 3 | O-ring KP31 C/Cvr (Ø63mm) | 5431-158-0502 | 1303-031-155 | | | 1 |
| 3 | O-ring KP35 C/Cvr (Ø102mm) | 5314-158-0500 | 1303-035-155 | 1 | 1 | 1 |
| 3 | O-ring KP35 C/Cvr (Ø92mm) | 5435-158-0501 | 1303-035-156 | 1 | 1 | 1 |
| 3 | O-ring KP39 C/Cvr (Ø76mm) | 5439-158-0500 | 1303-039-155 | | | 1 |
| 4 | Piston Ring (Turb & Comp) | 5431-127-0102 | 1303-035-160 | 2 | 2 | 2 |
| 5 | Flinger sleeve (12.6mm F/back) | 5431-127-0402 | 1303-035-200 | | 1 | 1 |
| 5 | Flinger sleeve (9.8mm S/back) | 5431-127-0405 | 1303-035-201 | 1 | | 1 |
| 6 | Thrust ring | 5431-124-0000 | 1303-035-220 | 1 | 1 | 1 |
| 7 | Spacer (J/ Brg) | 5431-109-4303 | N/A | | | |
| 8 | Insert/Seal Plate KP35 | 5435-152-3003 | N/A | | | |
| 9 | Thrust bearing (180 deg) | 5431-155-1301 | 1303-035-320 | | | |
| 9 | Thrust bearing (360 deg) | ? | 1303-035-321 | 1 | 1 | 1 |
| 10 | Shaft nut M4x0.5 | 5431-128-5002 | 1303-035-351 | 1 | 1 | 1 |
| 12 | Clamp Washer KP39 (Turbine) | 5900-109-5800 | 1303-035-580 | | | 2 |
| 11 | Bolt KP35 Turbine (M6x12) | 5900-117-4503 | 1303-035-600 | 3 | 3 | 3 |
| 14 | Bolt (Flanged) KP35 C/Cvr | 500-3536-0612 | 1303-035-610 | 6 | 6 | 6 |
| 15 | Screw (M3 Socket-head) Seal Plate | 5900-117-4507 | 1303-035-620 | 2 | 2 | 2 |
| 11 | Bolt (M6x10) KP39 Turbine | 5900-109-0400 | 1303-039-600 | | | 4 |

Technical Note: The piston ring for KP31/5/9 turbo is dimensionally the same as K03 but they are not interchangeable. The KP turbo runs hotter and requires higher temperature material. Ensure the correct ring is used for a quality repair.

Melett recommend the earlier 180° thrust bearing is replaced by the later 360° Thrust bearing as an upgrade. The earlier 180° thrust bearing is available separately or part of various other kits.

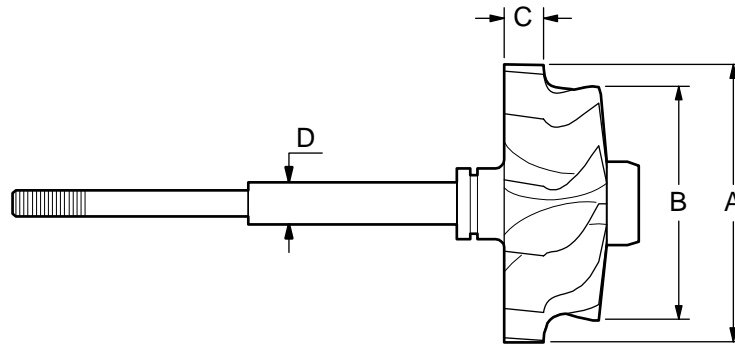
Oversize Repair Parts

Melett do not offer oversize parts for the KP turbos. The turbo design does not allow for material removal during repair and oversizing should not be attempted.

KP/BV35 Type

Major Replacement Parts - Detail

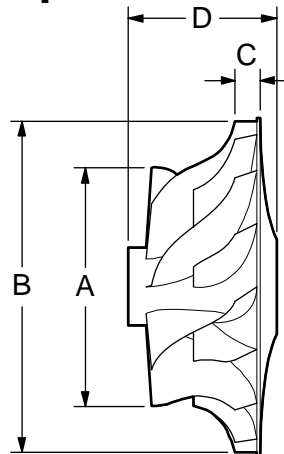
Shaft & Wheel



| Melett Part No. | To replace KKK.. | (A) Inducer \varnothing mm's | (B) Exducer \varnothing mm's | (C) Tip width mm's | (D) Shaft OD mm's | Comp Wheel Bore mm's |
|---------------------|------------------|--------------------------------------|--------------------------------------|--------------------------|-------------------------|----------------------------|
| KP35 | | | | | | |
| 1303-035-435 | 5435-120-5000 | 34.7 | 29.2 | 5.3 | 6.0 | 4.1 |
| 1303-035-435 | 5435-120-5004 | 34.7 | 29.2 | 5.3 | 6.0 | 4.1 |
| 1303-035-435 | 5435-120-5006 | 34.7 | 29.2 | 5.3 | 6.0 | 4.1 |
| 1303-035-435 | 5435-120-5010 | 34.7 | 29.2 | 5.3 | 6.0 | 4.1 |
| 1303-035-435 | 5435-120-5015 | 34.7 | 29.2 | 5.3 | 6.0 | 4.1 |
| 1303-035-435 | 5435-120-8500 | 34.7 | 29.2 | 5.3 | 6.0 | 4.1 |

Melett's fully qualified Engineers are available to answer any technical enquiry regarding limits, tolerances, and turbo set-up configurations. Email: Engineer@melett.com

Compressor Wheel



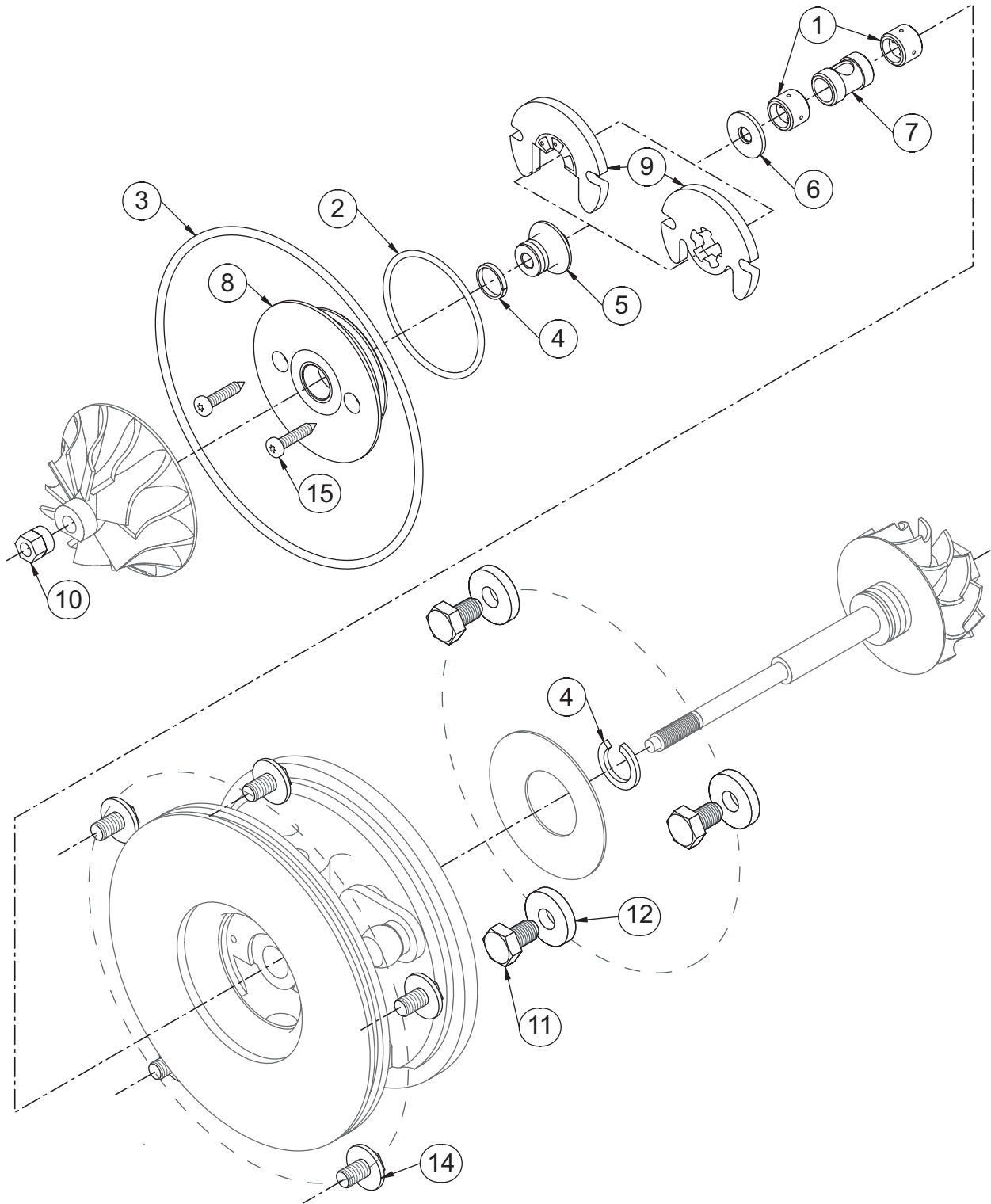
| Melett Part No. | To replace KKK... | KKK Trim | (A) Inducer \varnothing mm's | (B) Full \varnothing mm's | (C) Tip width mm's | (D) Total Hub Length | No. of Blades |
|---------------------|-------------------|----------|--------------------------------------|-----------------------------------|--------------------------|----------------------------|------------------|
| KP35 | | | | | | | |
| 1303-035-400 | 5439-123-2001 | 1672CA | 29.5 | 41.0 | 4.2 | 21.9 | 5\5 |

Borg Warner KP/BV39 Type Turbos

Common Service Parts
Repair Kits

KP/BV39 Type

Common Service Parts



KP/BV39 Type Repair Parts & Service Kits

All parts are available for purchase as individual components or in the following popular Repair Kits

| Key | Part Description | OE Part Number | Melett Part Number | Major Kit Flatback 1303-039-752 | Major Kit Superback 1303-039-753 | Universal Kit KP35/39 1303-035-756 |
|-----|------------------------------------|----------------|---------------------|------------------------------------|-------------------------------------|---------------------------------------|
| 1 | Journal bearing KP31/35/39 Std/Std | 5431-155-1002 | 1303-035-100 | 2 | 2 | 2 |
| 2 | O-ring Insert to B/Hsg | 5431-158-0501 | 1303-035-150 | 1 | 1 | 1 |
| 3 | O-ring KP31 C/Cvr (Ø63mm) | 5431-158-0502 | 1303-031-155 | | | 1 |
| 3 | O-ring KP35 C/Cvr (Ø102mm) | 5314-158-0500 | 1303-035-155 | | | 1 |
| 3 | O-ring KP35 C/Cvr (Ø92mm) | 5435-158-0501 | 1303-035-156 | | | 1 |
| 3 | O-ring KP39 C/Cvr (Ø76mm) | 5439-158-0500 | 1303-039-155 | 1 | 1 | 1 |
| 4 | Piston Ring (Turb & Comp) | 5431-127-0102 | 1303-035-160 | 2 | 2 | 2 |
| 5 | Flinger sleeve (12.6mm F/back) | 5431-127-0402 | 1303-035-200 | 1 | | 1 |
| 5 | Flinger sleeve (9.8mm S/back) | 5431-127-0405 | 1303-035-201 | | 1 | 1 |
| 6 | Thrust ring | 5431-124-0000 | 1303-035-220 | 1 | 1 | 1 |
| 7 | Spacer (J/ Brg) | 5431-109-4303 | N/A | | | |
| 8 | Insert/Seal Plate KP39 | 5439-152-3001 | 1303-039-300 | | | |
| 9 | Thrust bearing (180 deg) | 5431-155-1301 | 1303-035-320 | | | |
| 9 | Thrust bearing (360 deg) | ? | 1303-035-321 | 1 | 1 | 1 |
| 10 | Shaft nut M4x0.5 | 5431-128-5002 | 1303-035-351 | 1 | 1 | 1 |
| 12 | Clamp Washer KP39 (Turbine) | 5900-109-5800 | 1303-035-580 | 2 | 2 | 2 |
| 11 | Bolt KP35 Turbine (M6x12) | 5900-117-4503 | 1303-035-600 | | | 3 |
| 14 | Bolt (Flanged) KP35 C/Cvr | 500-3536-0612 | 1303-035-610 | 6 | 6 | 6 |
| 15 | Screw (M3 Socket-head) Seal Plate | 5900-117-4507 | 1303-035-620 | 2 | 2 | 2 |
| 11 | Bolt (M6x10) KP39 Turbine | 5900-109-0400 | 1303-039-600 | 4 | 4 | 4 |

Technical Note: The piston ring for KP31/5/9 turbo is dimensionally the same as K03 but they are not interchangeable. The KP turbo runs hotter and requires higher temperature material. Ensure the correct ring is used for a quality repair.

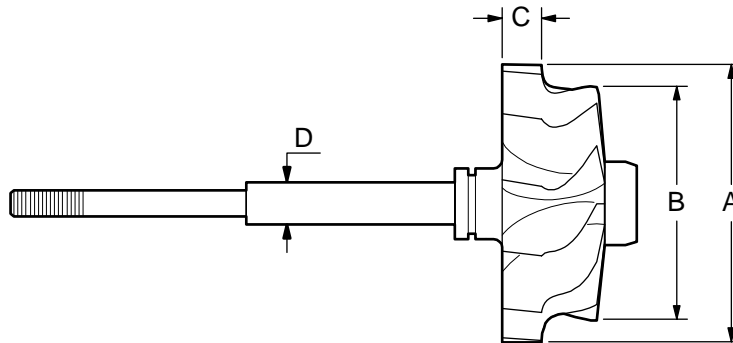
Melett recommend the earlier 180° thrust bearing is replaced by the later 360° Thrust bearing as an upgrade. The earlier 180° thrust bearing is available separately or part of various other kits.

Oversize Repair Parts

Melett do not offer oversize parts for the KP turbos. The turbo design does not allow for material removal during repair and oversizing should not be attempted.

KP/BV39 Type Major Replacement Parts - Detail

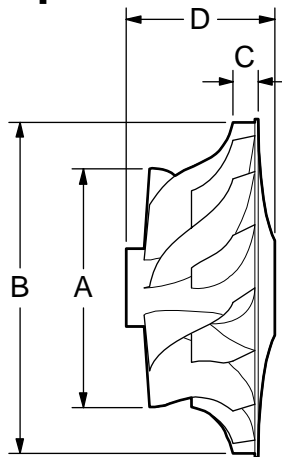
Shaft & Wheel



| Melett Part No. | To replace KKK.. | (A) Inducer \varnothing mm's | (B) Exducer \varnothing mm's | (C) Tip width mm's | (D) Shaft OD mm's | Comp Wheel Bore mm's |
|-----------------|------------------|--------------------------------------|--------------------------------------|--------------------------|-------------------------|----------------------------|
| 1303-039-435 | 5439-120-5011 | 38.5 | 37.5 | 6.5 | 6.0 | 4.1 |

Melett's fully qualified Engineers are available to answer any technical enquiry regarding limits, tolerances, and turbo set-up configurations. Email: Engineer@melett.com

Compressor Wheel



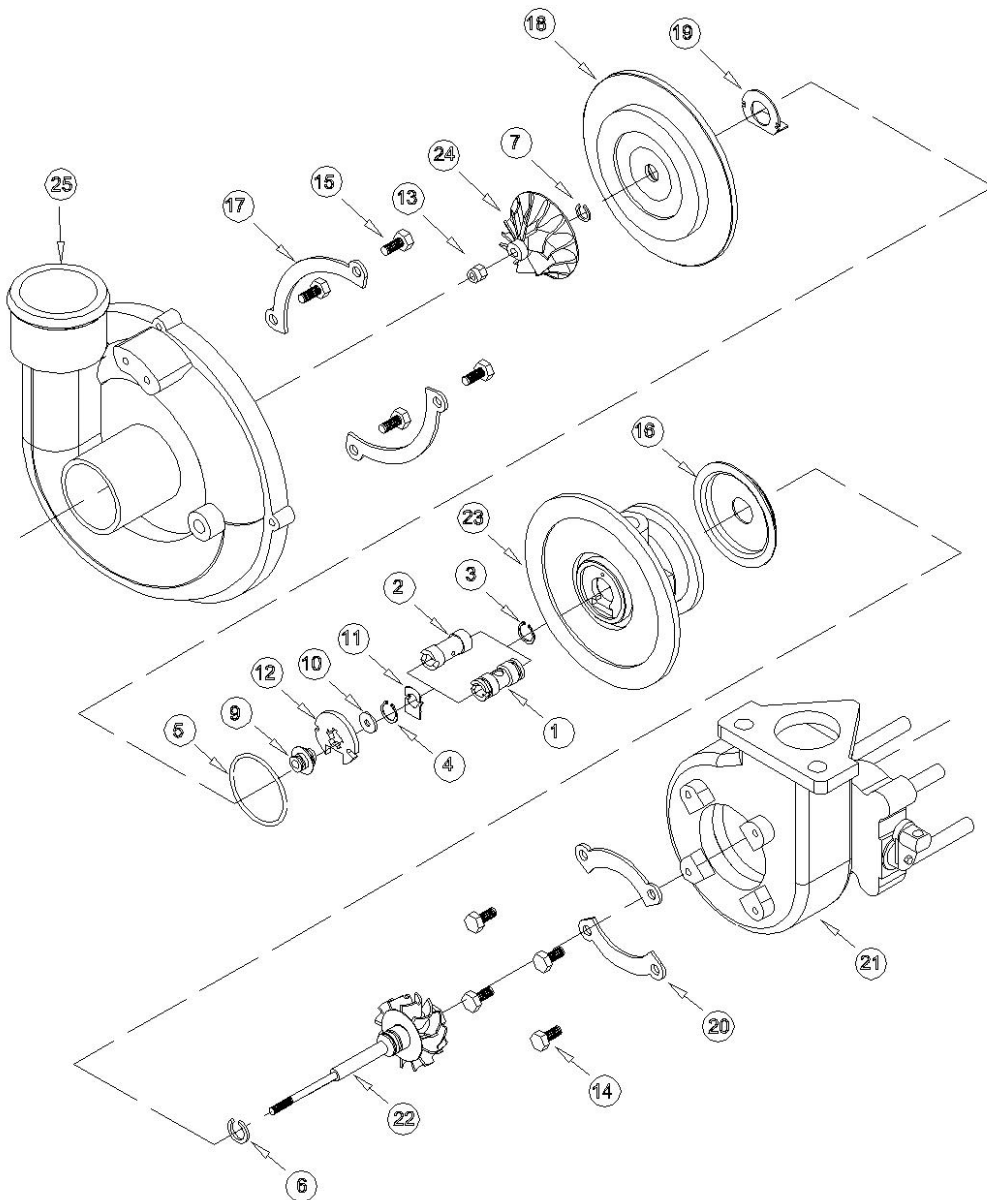
| Melett Part No. | To replace KKK... | KKK Trim | (A) Inducer \varnothing mm's | (B) Full \varnothing mm's | (C) Tip width mm's | (D) Total Hub Length | No. of Blades |
|-----------------|-------------------|----------|--------------------------------------|-----------------------------------|--------------------------|----------------------------|------------------|
| 1303-039-400 | 5443-123-2008 | 1873CC | 33.7 | 46.0 | 4.0 | 21.9 | 6\6 |
| 1303-039-400 | 5443-123-2012 | 1873CC | 33.7 | 46.0 | 4.0 | 21.9 | 6\6 |

Borg Warner K03/K04 Type Turbos

Common Service Parts
Oversize Service Parts
Major Replacement Parts
(Shaft & Wheels, Compressor Wheels etc)

K03/K04 Type

Common Service Parts



K03/K04

Repair Parts & Service Kits

All parts are available for purchase as individual components or in the following popular Repair Kits

| Key | Part Description | Melett Part Number | Qty Per Turbo | Minor Kit (Twin Feed) 1302-003-751 | Minor Kit (Sing. feed) 1302-003-752 | Major Kit (Twin Feed) 1302-003-753 | Major Kit (Sing. feed) 1302-003-754 |
|-----|-----------------------------------|--------------------|---------------|---------------------------------------|--|---------------------------------------|--|
| 1 | Journal Bearing (twin oil feed) | 1302-003-100 | 1 | 1 | | 1 | |
| 2 | Journal Bearing (single oil feed) | 1302-004-100 | 1 | | 1 | | 1 |
| 3 | Circlip | 1302-003-140 | 1 | 1 | 1 | 1 | 1 |
| 4 | "C"Clip (lock plate retainer) | 1302-003-141 | 1 | 1 | 1 | 1 | 1 |
| 5 | "O"Ring Seal Plate | 1302-003-150 | 1 | 1 | 1 | 1 | 1 |
| 6 | Piston Ring Turb End | 1302-003-160 | 1 | 1 | 1 | 1 | 1 |
| 7 | Piston Ring Comp End | 1302-003-170 | 1 | 1 | 1 | 1 | 1 |
| 9 | Thrust flinger (Ø4.6mm) | 1302-003-200 | 1 | | | 1 | 1 |
| 9 | Thrust flinger (Ø4.4mm) | N/A | 1 | | | | |
| 10 | Thrust Washer/Ring (Ø4.6mm) | 1302-003-220 | 1 | | | 1 | 1 |
| 10 | Thrust Washer/Ring (Ø4.4mm) | N/A | 1 | | | | |
| 11 | J-Bearing Lock plate | 1302-003-290 | 1 | 1 | 1 | 1 | 1 |
| 12 | Thrust Bearing | 1302-003-320 | 1 | 1 | 1 | 1 | 1 |
| 13 | Shaft nut 4mm LHT | 1302-003-350 | 1 | 1 | 1 | 1 | 1 |
| 13 | Shaft nut 4.5mm LHT | 1302-003-351 | 1 | 1 | 1 | 1 | 1 |
| 13 | Shaft Nut 4mm RHT | N/A | 1 | | | | |
| 14 | Bolts (Turb Hsg) | 1302-003-600 | 6 | 6 | 6 | 6 | 6 |
| 15 | Bolts (Comp Cover) | 1302-003-610 | 4 | 4 | 4 | 4 | 4 |
| 16 | Heat Shield | N/A | 1 | | | | |
| 17 | Clamps (Comp Cover) | N/A | 2 | | | | |
| 18 | Seal Plate | N/A | 1 | | | | |
| 19 | Oil Deflector | 1302-003-310 | 1 | | | | |
| 20 | Clamps (Turb Hsg) | N/A | 2 | | | | |
| | | | | Replaces 5303-711-0001 | Replaces 5303-711-0000 | | |

Oversize Repair Parts Available

| Journal Bearings | | | |
|--|-----------|-----------------------------|-------------------------------|
| OE Part Number 5303-155-1010 / 5303-155-1007 | | | |
| Oversize's Available | | Part Number (twin oil feed) | Part Number (single oil feed) |
| OD Std | ID -.005" | 1302-003-117 | 1302-004-117 |
| OD Std | ID -.010" | 1302-003-127 | 1302-004-127 |

| Piston Rings | | |
|------------------------------|------------|--------------|
| OE Part Number 5314-127-0100 | | |
| Oversize's Available | | Part Number |
| Turbine End | | |
| OD +.010" | Wth Std | 1302-003-180 |
| OD Std | Wth +.010" | 1302-003-181 |
| OD +.010" | Wth +.010" | 1302-003-182 |

K03/K04 Type Major Replacement Parts - Detail

CHRA Kits

| Melett CHRA Kit | OE Number | Bearing housing | Shaft and wheel | Comp wheel | backplate | Kit |
|-----------------|---------------|-----------------|-----------------|--------------|--------------|--------------|
| 1302-003-700 | 5303-710-0500 | 1302-004-451 | 1302-003-442 | 1302-003-401 | 1302-003-300 | 1302-003-753 |
| 1302-003-701 | 5303-710-0501 | 1302-004-451 | 1302-003-442 | 1302-003-401 | 1302-003-300 | 1302-003-753 |
| 1302-003-702 | 5303-710-0502 | 1302-003-460 | 1302-003-438 | 1302-003-402 | 1302-003-302 | 1302-003-754 |
| 1302-003-704 | 5303-710-0504 | 1302-003-460 | 1302-003-435 | 1302-003-402 | 1302-003-302 | 1302-003-754 |
| 1302-003-709 | 5303-710-0509 | 1302-003-460 | 1302-003-438 | 1302-003-401 | 1302-003-303 | 1302-003-754 |
| 1302-003-711 | 5303-710-0511 | 1302-003-460 | 1302-003-435 | 1302-003-402 | 1302-003-302 | 1302-003-754 |
| 1302-003-713 | 5303-710-0513 | 1302-004-451 | 1302-003-435 | 1302-003-406 | 1302-003-304 | 1302-003-753 |
| 1302-003-723 | 5303-710-0523 | 1302-004-451 | 1302-003-435 | 1302-003-406 | 1302-003-305 | 1302-003-753 |
| 1302-004-701 | 5304-710-0501 | 1302-004-450 | 1302-004-436 | 1302-003-402 | 1302-003-302 | 1302-003-753 |
| 1302-004-709 | 5304-710-0509 | 1302-004-451 | 1302-004-437 | 1302-003-402 | 1302-003-302 | 1302-003-753 |

**These core assembly kits are supplied in kit form ready for assembly and balancing.
Contact Melett Sales for further information and prices.**

Complete CHRA'S built and VSR Balanced

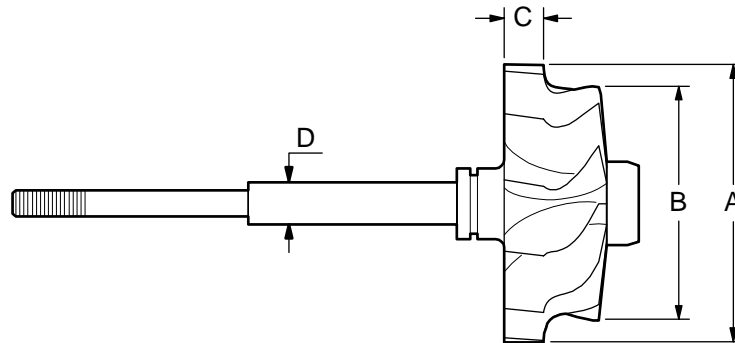
| Melett CHRA | OE Number | Comments |
|--------------|---------------|---|
| 1302-003-900 | 5303-710-0500 | CHRA Fully built and VSR Balanced in the UK |
| 1302-003-901 | 5303-710-0501 | CHRA Fully built and VSR Balanced in the UK |
| 1302-003-902 | 5303-710-0502 | CHRA Fully built and VSR Balanced in the UK |
| 1302-003-904 | 5303-710-0504 | CHRA Fully built and VSR Balanced in the UK |
| 1302-003-909 | 5303-710-0509 | CHRA Fully built and VSR Balanced in the UK |
| 1302-003-911 | 5303-710-0511 | CHRA Fully built and VSR Balanced in the UK |
| 1302-003-913 | 5303-710-0513 | CHRA Fully built and VSR Balanced in the UK |
| 1302-003-923 | 5303-710-0523 | CHRA Fully built and VSR Balanced in the UK |
| 1302-004-901 | 5304-710-0501 | CHRA Fully built and VSR Balanced in the UK |
| 1302-004-909 | 5304-710-0509 | CHRA Fully built and VSR Balanced in the UK |

Contact Melett Sales for further information and prices.

K03/K04 Type

Major Replacement Parts - Detail

Shaft & Wheel



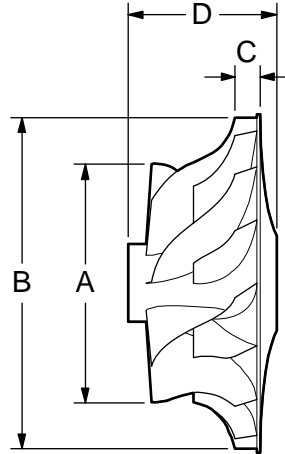
| Melett Part No. | To replace KKK.. | (A) Inducer \varnothing mm's | (B) Exducer \varnothing mm's | (C) Tip width mm's | (D) Shaft OD mm's | Comp Wheel Bore mm's |
|---------------------|------------------|--------------------------------------|--------------------------------------|--------------------------|-------------------------|----------------------------|
| K03 | | | | | | |
| 1302-003-435 | 5303-120-5008 | 45.0 | 40.5 | 6.8 | 7.0 | 4.6 |
| 1302-003-435 | 5303-120-5023 | 45.0 | 40.5 | 6.8 | 7.0 | 4.6 |
| 1302-003-438 | 5303-120-5029 | 45.0 | 38.0 | 6.8 | 7.0 | 4.6 |
| 1302-003-439 | 5303-120-5015 | 45.0 | 34.0 | 6.8 | 7.0 | 4.6 |
| 1302-003-440 | 5303-120-5001 | 45.0 | 34.0 | 6.8 | 7.0 | 4.4 |
| K04 | | | | | | |
| 1302-004-436 | 5304-120-5008 | 50.0 | 42.0 | 7.6 | 7.0 | 4.6 |
| 1302-004-437 | 5304-120-5010 | 50.0 | 42.0 | 6.4 | 7.0 | 4.6 |

Melett's fully qualified Engineers are available to answer any technical enquiry regarding limits, tolerances, and turbo set-up configurations. Email: Engineer@melett.com

K03/K04 Type

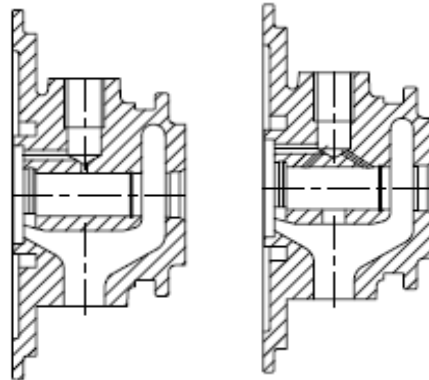
Major Replacement Parts - Detail

Compressor Wheel



| Melett Part No. | To replace KKK... | KKK Trim | (A) Inducer ϕ mm's | (B) Full ϕ mm's | (C) Tip width mm's | (D) Total Hub Length | No. of Blades |
|-----------------|-------------------|----------|-------------------------|----------------------|--------------------|----------------------|---------------|
| 1302-003-401 | 5303-123-2011 | 1870E | 32.0 | 46.0 | 3.2 | 25.6 | 4/4 |
| 1302-003-402 | 5304-123-2007 | 2072G | 36.0 | 50.0 | 4.7 | 25.6 | 6/6 |
| 1302-003-402 | 5304-123-2018 | 2072G | 36.0 | 50.0 | 4.7 | 25.6 | 6/6 |
| 1302-003-405 | 5304-123-2202 | 2074C | 37.8 | 51.0 | 4.4 | 25.6 | 6/6 |
| 1302-003-406 | 5304-123-2201 | 2076C | 38.5 | 51.0 | 5.5 | 25.6 | 6/6 |

Bearing Housings



Single feed

Twin feed

| Melett Part No. | To replace KKK... | Oil Inlet | Oil Outlet Bore | Water Ports | Oil/Water Cooled | Brg feed |
|-----------------|-------------------|-----------|-----------------|-------------|------------------|----------|
| 1302-004-450 | 5304-150-0004 | M12 x 1.5 | 12mm | N/A | Oil | Twin |
| 1302-004-451 | 5304-150-0010/11 | M12 x 1.5 | 12mm | N/A | Oil | Twin |
| 1302-004-452 | 5304-151-0006 | M10 x 1.0 | 12mm | N/A | Oil | Twin |
| 1302-003-460 | 5304-150-0006/9 | M12 x 1.5 | 15mm | M14 x 1.5 | water | Single |

K03/K04 Type Major Replacement Parts

Backplate

| To replace ... | Melett Part No. | C/W Recess A | C/C Diameter B | OD (mm) C | Comments |
|----------------|---------------------|--------------|----------------|-----------|----------|
| 5303-151-5701 | 1302-003-300 | 46.0 | 112.9 | 71.7 | |
| 5304-151-5702 | 1302-003-302 | 51.2 | 112.9 | 76.0 | |
| 5304-151-5703 | 1302-003-303 | 46.0 | 112.9 | 76.0 | |
| 5304-151-5705 | 1302-003-301 | 47.2 | 112.9 | 76.0 | |
| 5304-151-5708 | 1302-003-306 | 57.2 | 112.9 | 86.6 | |
| 5304-151-5712 | 1302-003-304 | 52.0 | 112.9 | 85.2 | |
| 5304-151-5716 | 1302-003-305 | 52.0 | 108.8 | 85.2 | |

Heatshield

| To replace ... | Melett Part No. | Comments |
|----------------|---------------------|---------------|
| 5303-165-2000 | 1302-003-340 | Recessed Dome |
| 5304-165-2000 | 1302-003-341 | Flat Dome |

Turbine Housings

| Make | Model | Turbo Model | To fit turbo... | Fit Shaft & Wheel trim... | OE Housing No. | Melett Number |
|------|---------------|-------------|-------------------|------------------------------------|----------------|---------------------|
| Audi | A4 / A6 1.8T | K03 | 5303-988-0005 | | 5303-100-9019 | 1302-003-890 |
| VW | Passat 1.8T | K03 | 5303-988-0005 | | 5303-100-9019 | 1302-003-890 |
| VW | Sharan 1.8T | K03 | 5303-988-0022 | | 5303-100-9019 | 1302-003-890 |
| Seat | Alhambra 1.8T | K03 | 5303-988-0022 | | 5303-100-9019 | 1302-003-890 |
| | | | | | | |
| Audi | A4 / A6 1.8T | K03 | 5303-988-0025 | | 5303-100-9060 | 1302-003-891 |
| Audi | A4 / A6 1.8T | K03 | 5303-988-0029 | | 5303-100-9060 | 1302-003-891 |
| Seat | Alhambra 1.8T | K03 | 5303-988-0049 | | 5303-100-9060 | 1302-003-891 |
| Audi | A4 1.8T | K03 | 5303-988-0073 | | 5303-100-9060 | 1302-003-891 |
| | | | | | | |
| Ford | Transit 2.5LD | K04 | 5304-988-0001/6/8 | 5304-120-5008 (7.6mm Tip Width) | 5304-100-9006 | 1302-004-890 |
| Ford | Transit 2.5LD | K04 | 5304-988-0001/6/8 | 5304-120-5010 (6.4mm Tip width) | 5304-100-9010 | 1302-004-891 |

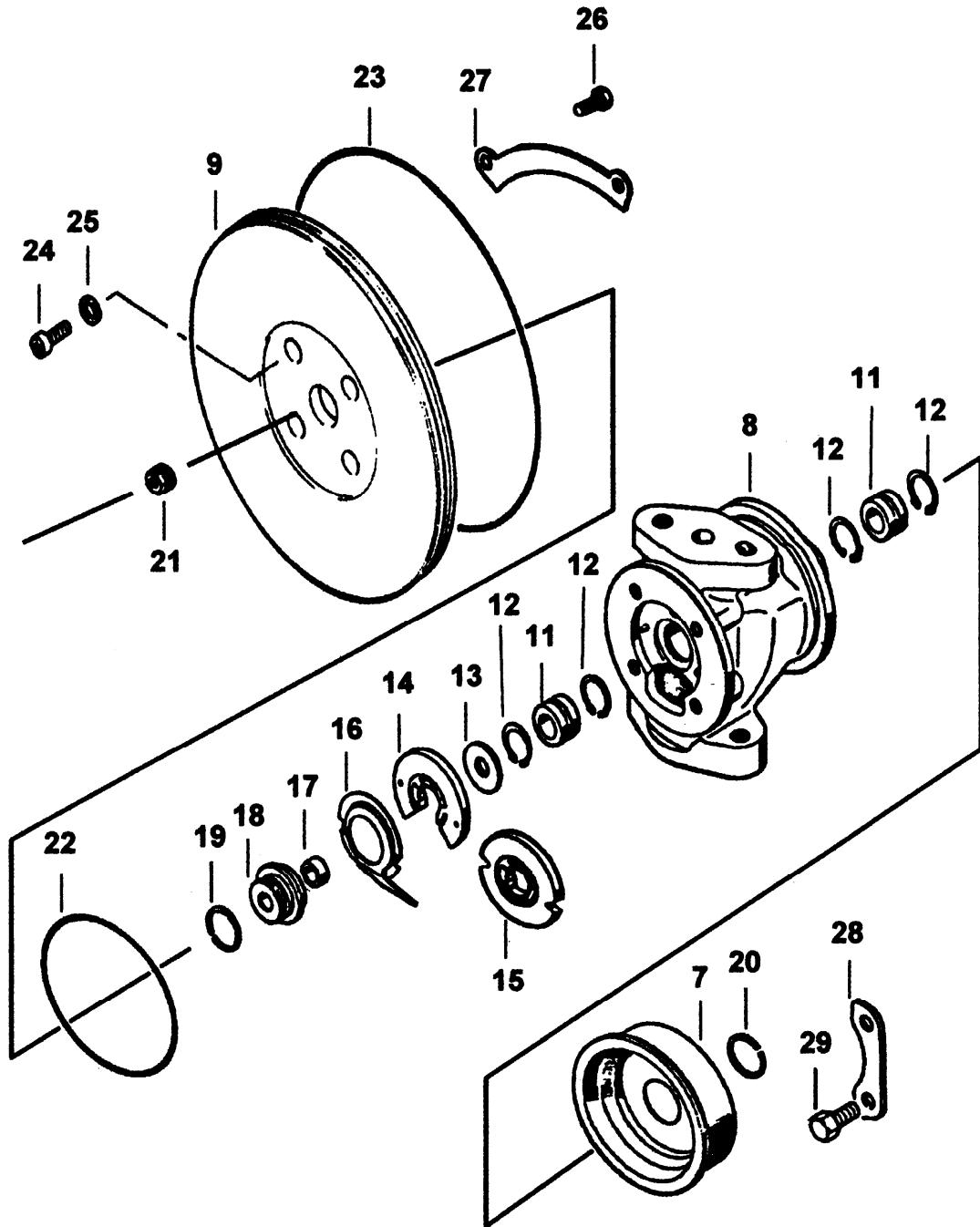
Technical Note: If in doubt of the type of S&W or T/Hsg required for K04 Transit, the 1302-004-890 housing takes a deeper trim wheel and will fit the more recent CHRA with the 5304-120-5010 shaft but performance will be reduced. Melett recommend the correct housing is used.

Borg Warner K14/K16 Type Turbos

Common Service Parts
Oversize Service Parts
Major Replacement Parts
(Shaft & Wheels, Compressor Wheels etc)
Where Used List

K14/16 Type

Common Service Parts



This illustration is a guide and does not necessarily show all parts accurately

K14/16 Type

Repair Parts & Service Kits

All parts are available for purchase as individual components or in the following popular Repair Kits

| Key | Part Description | MELETT Part Number | OE Number | Qty Per Turbo | Minor Kit K14&16 1301-014-754 | Major Kit K14&16 1301-014-755 | Thrust Kit K14/16 1301-014-760 |
|-----|-------------------------------|---------------------|---------------|---------------|---|---|--|
| 11 | Journal Bearing | 1301-014-100 | 5314-155-1003 | 2 | 2 | 2 | |
| 12 | Retaining Ring | 1301-014-140 | 500-4079-0007 | 4 | 4 | 4 | |
| 22 | O-ring B/Hsg | 1301-014-150 | 5314-158-0501 | 1 | 1 | 1 | |
| 23 | O-ring K14 C/cvr (102mm) | 1301-014-151 | 5314-158-0500 | 1 | 1 | 1 | |
| 23 | O-ring K16 C/Cvr (114mm) | 1301-016-151 | 5316-158-0501 | 1 | 1 | 1 | |
| 20 | Piston Ring (T&C) | 1301-014-160 | 5314-127-0100 | 2 | 2 | 2 | |
| 18 | Thrust Flinger K14/16 | 1301-014-200 | 5314-127-0400 | 1 | | 1 | 1 |
| 17 | Thrust Spacer K14/16 | 1301-014-220 | 5314-127-0500 | 1 | | 1 | 1 |
| 13 | Thrust Ring K14/16 | 1301-014-240 | 5314-124-0001 | 1 | | 1 | 1 |
| 14 | Thrust Bearing (360 deg) | 1302-003-320 | 5314-155-1302 | 1 | 1 | 1 | |
| 21 | Shaft Nut M5x7 RHT | 1301-014-350 | 5314-128-0202 | 1 | 1 | 1 | |
| 21 | Shaft Nut M5x7 LHT | 1301-014-351 | 5314-128-5000 | 1 | 1 | 1 | |
| 25 | Washer (Seal Plate) | 1301-014-581 | 5314-159-3300 | 4 | 4 | 4 | |
| 29 | Bolt (Turbine Clamps) | 1301-026-600 | 5900-109-0400 | 6 | 6 | 6 | |
| 26 | Bolt (Comp Cover) | 1301-026-610 | 5003-535-5219 | 4 | 4 | 4 | |
| 24 | Bolt (Socket head Seal Plate) | 1301-014-620 | 5900-129-0202 | 4 | 4 | 4 | |
| | | | | | Similar to 5316-711-0002 | 5316-711-0002 & 5316-711-0500 | Replace 5316-711-0500 |

Oversize Repair Parts Available

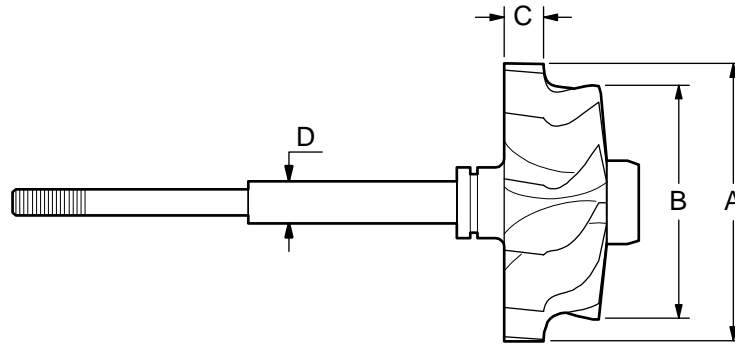
| Journal Bearings | | |
|---|-----------|---------------------|
| Original KKK Part Number (Std/Std): 5314-155-1005 | | |
| Oversize's Available | | Part Number |
| OD +.005" | ID -.005" | 1301-014-110 |
| OD +.005" | ID Std | 1301-014-114 |
| OD Std. | ID -.005" | 1301-014-117 |
| OD +.010" | ID -.010" | 1301-014-120 |
| OD +.010" | ID Std | 1301-014-124 |
| OD Std. | ID -.010" | 1301-014-127 |
| OD +.005" | ID -.010" | 1301-014-130 |

| Piston Rings | | | |
|--|------------|-------------|---------------------|
| Oversizes Available – Turbine & Comp End | | | |
| Description | OD | Width | Part Number |
| 14mm Ring | OD +0.1mm | Wth Std | 1301-014-180 |
| 14mm Ring | OD +0.010" | Wth Std | 1301-014-182 |
| 14mm Ring | OD +0.010" | Wth +0.010" | 1301-014-183 |
| 14mm Ring | OD Std | Wth +0.010" | 1301-014-184 |

K14/16 Type

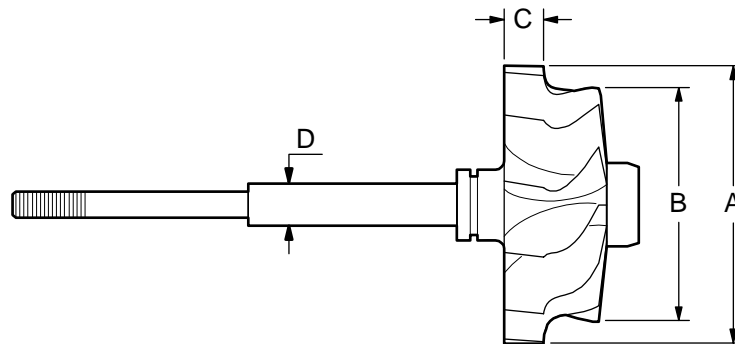
Major Replacement Parts - Detail

Shaft & Wheel K14



| Melett Part No. | To replace KKK.. | (A) Inducer \varnothing mm's | (B) Exducer \varnothing mm's | (C) Tip width mm's | (D) Shaft OD mm's |
|-----------------|--------------------|--------------------------------------|--------------------------------------|--------------------------|-------------------------|
| 1301-014-435 | 5314-120-2101/2111 | 50.0 | 37.2 | 6.2 | 8.5 |
| | 5314-120-5009 | | | | |
| 1301-014-436 | 5314-120-2104/2105 | 50.0 | 42.0 | 5.9 | 8.5 |
| | 5314-120-2114/2115 | | | | |
| | 5314-120-5002/5006 | | | | |

Shaft & Wheel K16



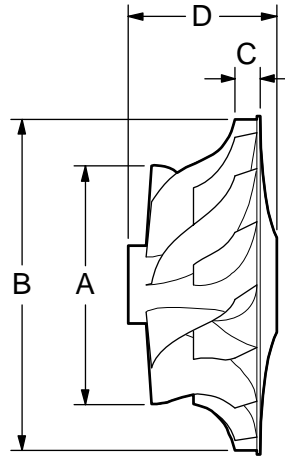
| Melett Part No. | To replace KKK.. | (A) Inducer \varnothing mm's | (B) Exducer \varnothing mm's | (C) Tip width mm's | (D) Shaft OD mm's |
|-----------------|--------------------|--------------------------------------|--------------------------------------|--------------------------|-------------------------|
| 1301-016-435 | 5316-120-2101/2103 | 55.0 | 41.0 | 6.3 | 8.5 |
| 1301-016-436 | 5316-120-2113/5000 | 55.0 | 49.1 | 6.7 | 8.5 |
| 1301-016-437 | 5316-120-5015/5028 | 55.0 | 46.2 | 6.5 | 8.5 |

Melett's fully qualified Engineers are available to answer any technical enquiry regarding limits, tolerances, and turbo set-up configurations. Email: Engineer@melett.com

K14/16 Type

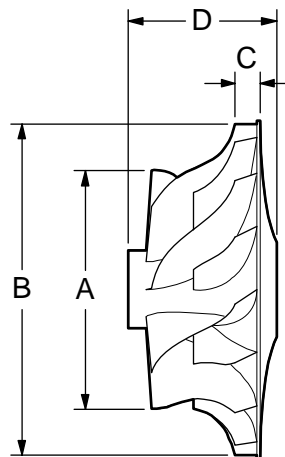
Major Replacement Parts - Detail

Compressor Wheel K14



| Melett Part No. | To replace KKK... | KKK Trim | (A) Inducer \varnothing mm's | (B) Full \varnothing mm's | (C) Tip width mm's | (D) Total Hub Length | No. of Blades |
|-----------------|--------------------|----------|--------------------------------|-----------------------------|--------------------|----------------------|---------------|
| 1301-014-400 | 5314-123-2000/2005 | 2060G | 30.1 | 49.8 | 4.6 | 26.0 | 12 |
| 1301-014-401 | 5314-123-2002 | 2070G | 35.0 | 50.0 | 6.2 | 26.0 | 12 |

Compressor Wheel K16



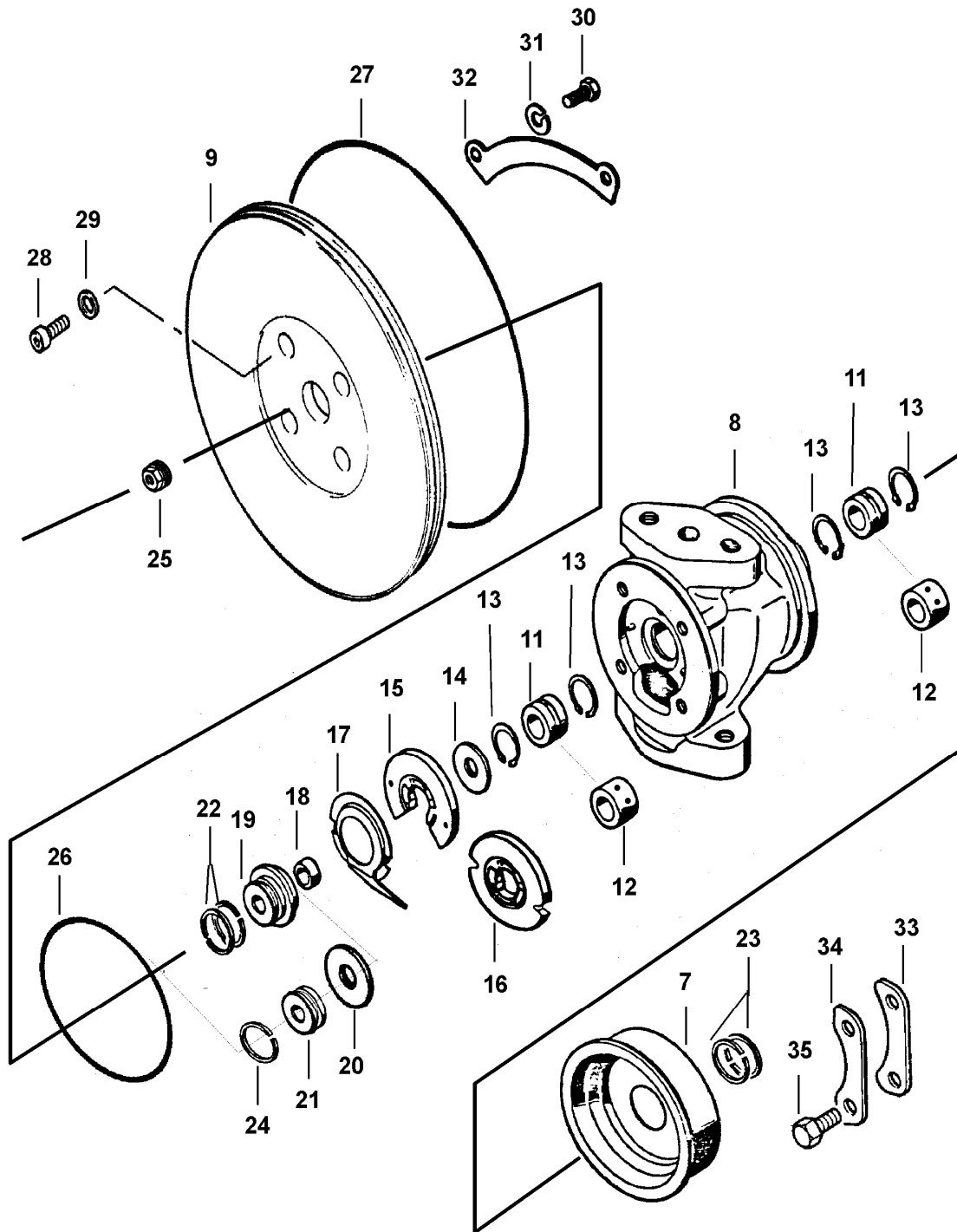
| Melett Part No. | To replace KKK... | KKK Trim | (A) Inducer \varnothing mm's | (B) Full \varnothing mm's | (C) Tip width mm's | (D) Total Hub Length | No. of Blades |
|-----------------|--------------------|----------|--------------------------------|-----------------------------|--------------------|----------------------|---------------|
| 1301-016-400 | 5316-123-2001/2003 | 2267G | 36.7 | 54.8 | 4.7 | 26.0 | 12 |
| 1301-016-401 | 5316-123-2002/2004 | 2264G | 35.2 | 54.8 | 4.5 | 26.0 | 12 |
| 1301-016-415 | 5316-123-2000/2005 | 2260G | 33.2 | 54.8 | 4.2 | 26.0 | 12 |

Borg Warner K24 Type Turbos

Common Service Parts
Oversize Service Parts
Compressor Wheels
'Where Used' for repair kits

K24 Type

Common Service Parts



This illustration is a guide and does not necessarily show all parts accurately

K24 Type

Repair Parts & Service Kits

All parts are available for purchase as individual components or in the following popular Repair Kits

| Key | Description | MELETT Part Number | Quantity Per Turbo | Minor Kit (K27 Style) 1301-024-750 | Minor Kit (K24 Minor) 1301-024-752 | Minor Kit Kit (K24 Style) 1301-024-755 |
|-----|---------------------------------|---------------------|--------------------|--|--|--|
| 11 | Bearing K14 / K16 Std. | 1301-014-100 | 2 | | 2 | 2 |
| 11 | Bearing (K2) Std | 1301-027-101 | 2 | 2 | | |
| 13 | Snap Ring (Bearing Retainer) | 1100-040-140 | 4 | 4 | | |
| 13 | Snap Ring (Bearing Retainer) | 1301-014-140 | 4 | | 4 | 4 |
| 17 | Oil Deflector | 1301-027-310 | 1 | 1 | | |
| 22 | Piston Ring K14 | 1301-014-160 | 1 | | | |
| 23 | Piston Ring (Turb.19.3mm) | 1301-027-161 | 2 | 2 | 2 | 2 |
| 24 | Piston Ring (Comp.19.3mm) | 1301-027-170 | 2 | 2 | | |
| 22 | Piston Ring (Comp. 14mm) | 1301-027-171 | 1 | | 1 | 1 |
| 16 | Thrust Bearing (K24.2) | 1301-024-320 | 1 | | 1 | 1 |
| 16 | Thrust Bearing (K27 360 degree) | 1301-027-321 | 1 | 1 | | |
| 25 | Shaft Nut K2 | 1301-027-350 | 1 | 1 | | |
| 25 | Shaft Nut K14/16 RHT > | 1301-014-350 | 1 | | | 1 |
| 25 | Shaft Nut K14/16 LHT | 1301-014-351 | 1 | | | 1 |
| 27 | O Ring (Comp Cover) | 1200-050-150 | 1 | 1 | | |
| 27 | O-Ring - K24 (Comp Cover) | 1301-024-155 | 1 | | | 1 |
| 27 | O Ring (K26) (Comp Cover) | 1301-026-150 | 1 | | | 1 |
| 26 | O Ring (Insert) | 1250-030-150 | 1 | 1 | 1 | 1 |
| 35 | Bolt K26 Turbine | 1301-026-600 | 6 | 6 | | |
| 29 | Washer (Seal plate) | 1301-027-581 | 4 | 4 | | 4 |
| 30 | Bolt K26 C/Hsg to Seal plate | 1301-026-610 | 6 | | | |
| 30 | Bolt (Turbine) | 1301-027-600 | 6 | | | 6 |
| 28 | Cap screws | 1301-026-620 | 4 | 4 | | 4 |
| | | | | | Replace 5324-711-0021 | Replace 5324-711-0009 |

Oversize Repair Parts Available

K24 turbos are based on either K14/16 style or K27 style.

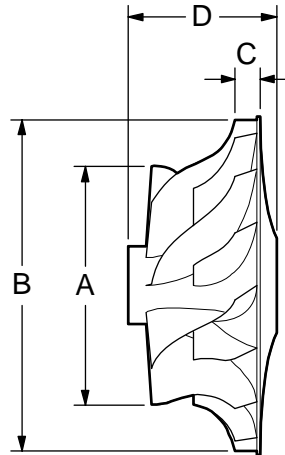
For oversize bearings and piston rings, see the appropriate catalogue section.

A full range is available of both styles.

K24 Type

Major Replacement Parts – Detail

Compressor Wheel



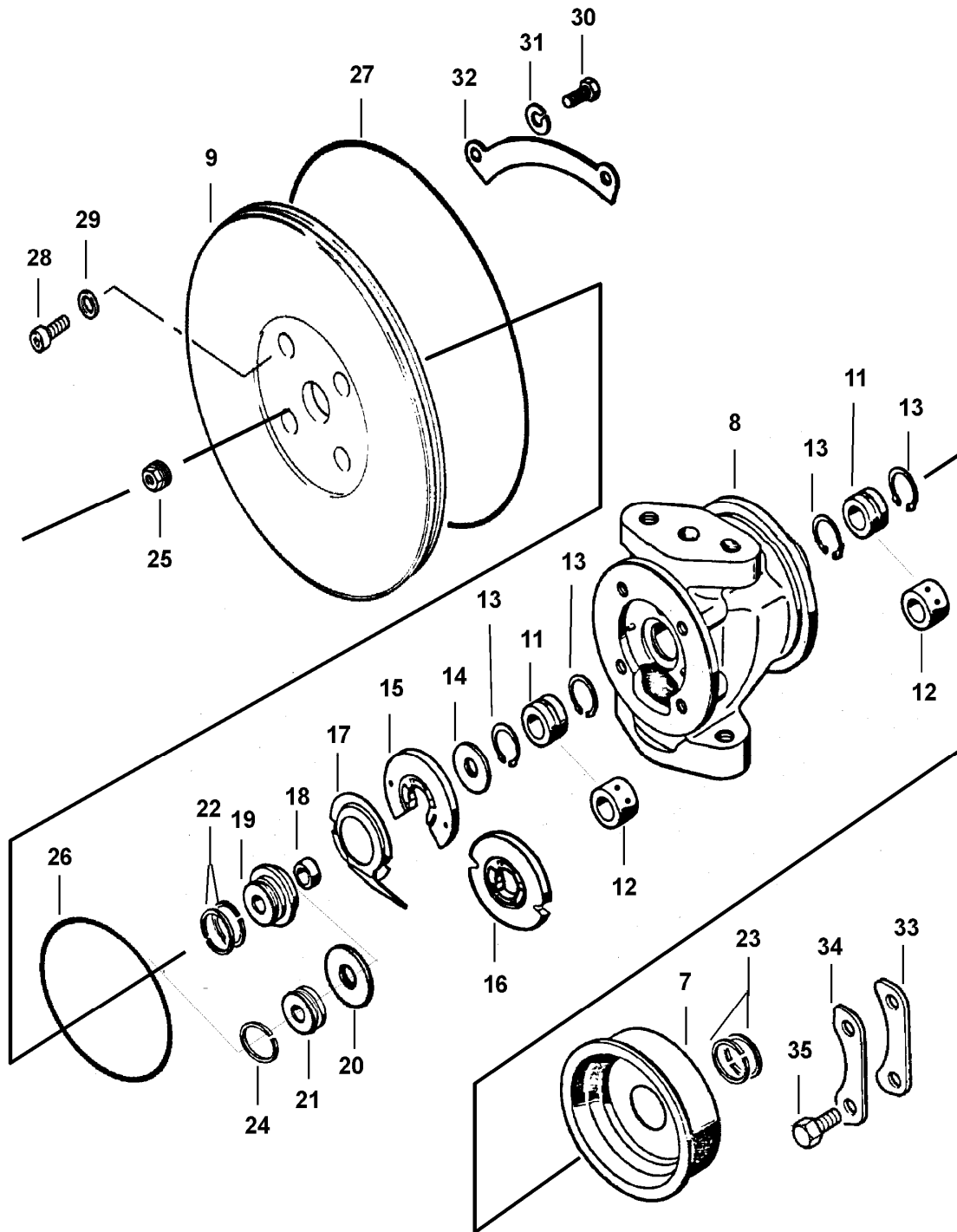
| Melett Part No. | To replace KKK... | KKK Trim | (A) Inducer \varnothing mm's | (B) Full \varnothing mm's | (C) Tip width mm's | (D) Total Hub Length | No. of Blades |
|-----------------|--------------------|----------|--------------------------------|-----------------------------|--------------------|----------------------|---------------|
| 1301-024-400 | 5324-123-2000/2014 | 2460G | | | | | |

Borg Warner K26 Type Turbos

Common Service Parts
Oversize Service Parts

K26 Type

Common Service Parts



This illustration is a guide and does not necessarily show all parts accurately

K26 Type

Repair Parts & Service Kits

All parts are available for purchase as individual components or in the following popular Repair Kits

| Key | Description | MELETT Part Number | Repair Kit (19mm) 1301-026-750 | Repair Kit (14mm) 1301-026-752 | Repair Kit (19 & 14) 1301-026-751 |
|-----|--|--------------------|-----------------------------------|-----------------------------------|--------------------------------------|
| 12 | Bearing (Grooved OD) | 1301-027-101 | 2 | 2 | 2 |
| 13 | Snap Ring | 1100-040-140 | 4 | 4 | 4 |
| 16 | Thrust Bearing 360 Deg. | 1301-027-321 | 1 | 1 | 1 |
| 17 | Oil Deflector | 1301-027-310 | | | |
| 18 | Spacer Sleeve | 1301-027-220 | | | |
| 19 | Flinger Sleeve (19.3 P/R) | 1301-027-200 | | | |
| 14 | Flinger Thrust Ring | 1301-027-240 | | | |
| 21 | Flinger Sleeve (14.0 P/R) | N/A | | | |
| 23 | Piston Ring (Turb) Ø19.3 x 1.2mm Radial | 1301-027-161 | 2 | 2 | 2 |
| 22 | Piston Ring (Comp) Ø19.3 x 1.0mm Radial | 1301-027-170 | 2 | | 2 |
| 24 | Piston Ring Ø14.0mm | 1301-027-171 | | 1 | 1 |
| 25 | Shaft Nut 7mm LHT | 1301-027-351 | 1 | 1 | 1 |
| 26 | O Ring (B/Hsg to Seal Plate) | 1250-030-150 | 1 | 1 | 1 |
| 27 | O Ring (S/P to C/H) K26 (135mm) | 1301-026-150 | 1 | 1 | 1 |
| 27 | O Ring (S/P to C/H) K26/27 (152mm) | 1301-027-150 | 1 | 1 | 1 |
| 28 | Cap Bolts (S/Plate to B/Hsg) | 1301-026-620 | 4 | 4 | 4 |
| 35 | Lock nut k26 Turbine | 1301-026-640 | | | |
| 29 | Washer (Seal plate) | 1301-027-581 | 4 | 4 | 4 |
| 30 | Bolt (C/Hsg - S/Plate) | 1301-026-610 | | | |
| 35 | Bolt (Turbine) | 1301-026-600 | 6 | 6 | 6 |
| | | | | Replaces 5326-711-0001 | |

Important Notes:

19.3mm Piston rings – Piston rings for the turbine end have a radial thickness of 1.2mm and the piston rings for the compressor end have a radial thickness of 1.0mm. To ensure a quality repair on a 19mm comp end design, the rings must be fitted the correct way around.

14mm Piston rings – Piston rings for the compressor end have a radial thickness of 1.0mm and are not interchangeable with the K14/16 piston ring which has the same OD but smaller (0.8mm) radial thickness.

See over for Oversize Repair Parts available

K26 Type

Oversize Repair Parts Available

| Journal Bearings (Grooved OD) | | |
|---|-----------|---------------------|
| OE Part Number (Std/Std): 5326-155-1003 | | |
| Oversize's Available | | Part Number |
| OD +.010" | ID -.010" | 1301-027-121 |
| OD +.010" | ID Std | 1301-027-125 |
| OD Std. | ID -.010" | 1301-027-128 |

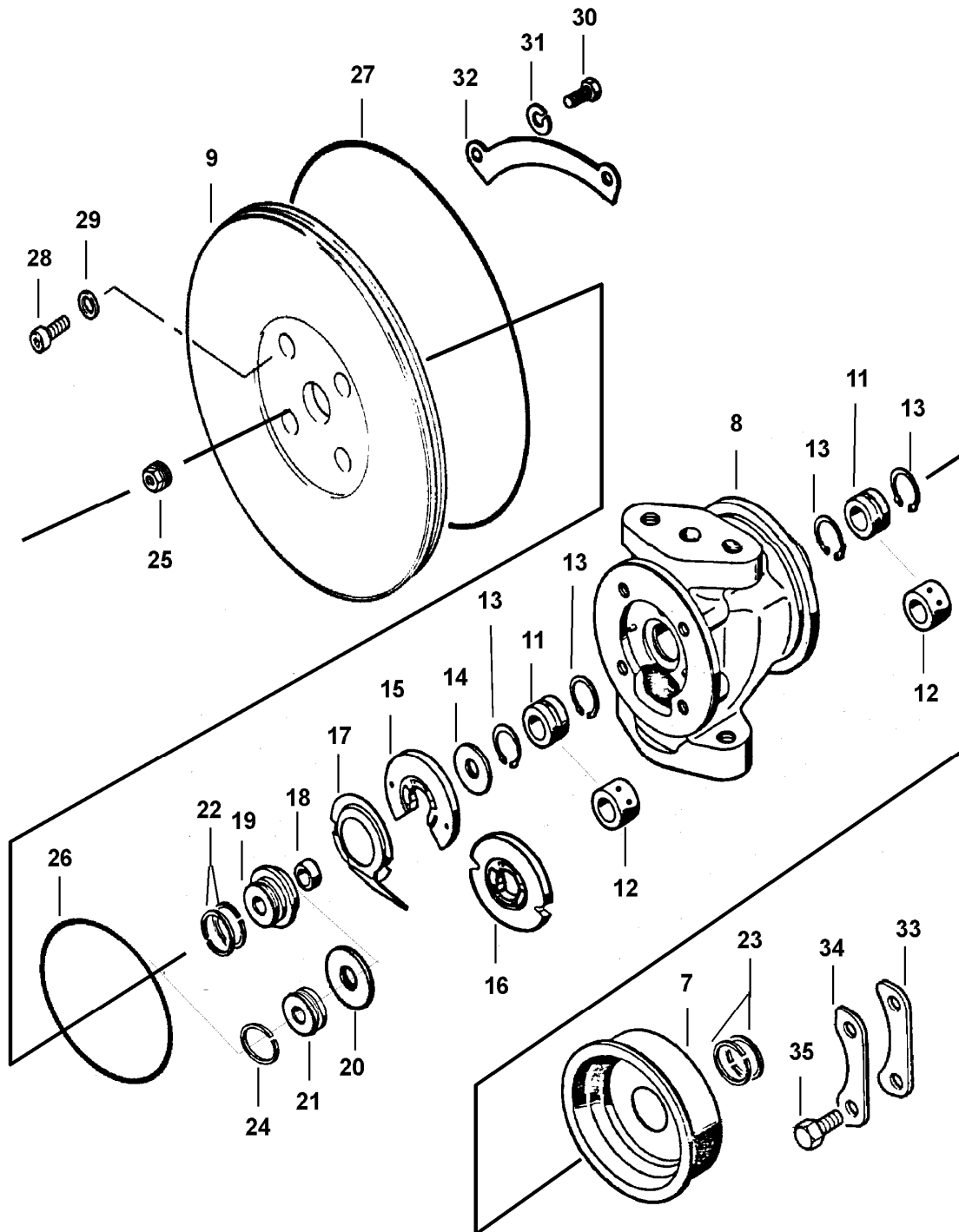
| Piston Rings | | | |
|---|------------|--------------|---------------------|
| OE Part Number (Turbine Std/Std): 5327-127-0102 | | | |
| OE Part Number (Comp 19mm Std/Std): 5223-127-0102 / 5326-127-0101 | | | |
| OE Part Number (Comp 14mm Std/Std): 5326-127-0103 | | | |
| Oversizes Available – Turbine & Comp End | | | |
| Description | OD | Width | Part Number |
| Ø19.3mm Comp End | Std | Wth +0.008" | 1301-027-180 |
| Ø19.3mm Turbine End | OD +0.010" | Wth Std | 1301-027-182 |
| Ø19.3mm Turbine End | OD +0.010" | Wth +0.010" | 1301-027-183 |
| | | | |
| Ø19.3mm Comp End | OD +0.010" | Wth Std | 1301-027-185 |

Borg Warner K27 Type Turbos

Common Service Parts
Oversize Service Parts
Major Replacement Parts
(Shaft & Wheels, Compressor Wheels etc)
Core Assemblies

K27 Type

Common Service Parts



This illustration is a guide and does not necessarily show all parts accurately

K27 Type Repair Parts & Service Kits

All parts are available for purchase as individual components or in the following popular Repair Kits

| Key | Description | MELETT Number | Qty Per Turbo | Repair Kit 14&19mm 1301-027-750 | Repair Kit 14mm 1301-027-751 | Repair Kit 19mm 1301-027-753 | Thrust Kit 19mm 1301-027-766 |
|-----|--|---------------|---------------|---------------------------------|---------------------------------|------------------------------|---------------------------------|
| 12 | Bearing (Smooth OD) | 1301-027-100 | 2 | | | | |
| 11 | Bearing (Grooved OD) | 1301-027-101 | 2 | 2 | 2 | 2 | |
| 13 | Snap Ring | 1100-040-140 | 4 | 4 | 4 | 4 | |
| 26 | O Ring (B/Hsg to Seal Plate) | 1250-030-150 | 1 | 1 | 1 | 1 | |
| 27 | O Ring (Seal/P to Comp/Hsg) Ø152mm - K26/27 | 1301-027-150 | 1 | 1 | 1 | 1 | |
| 27 | O Ring (Seal/P to Comp/Hsg) Ø175mm - K27/28 | 1301-027-151 | 1 | 1 | 1 | 1 | |
| 27 | O Ring (Seal/P to Comp/Hsg) Ø184.5mm - K27/28/29 | 1301-028-150 | 1 | 1 | 1 | 1 | |
| 23 | Piston Ring (Turb) Ø19.3 x 1.2mm Radial | 1301-027-161 | 2 | 2 | 2 | 2 | |
| 22 | Piston Ring (Comp) Ø19.3 x 1.0mm Radial | 1301-027-170 | 0/2 | 2 | | 2 | |
| 24 | Piston Ring Ø14.0mm | 1301-027-171 | 0/1 | 1 | 1 | | |
| 19 | Flinger Sleeve (19.3 P/R) | 1301-027-200 | 1 | | | | 1 |
| 18 | Spacer Sleeve (19.3 P/R) | 1301-027-220 | 1 | | | | 1 |
| 14 | Thrust Ring (19.3 P/R) | 1301-027-240 | 1 | | | | 1 |
| 21 | Flinger Sleeve (14.0 P/R) | N/A | 1 | | | | |
| 17 | Oil Deflector | 1301-027-310 | 1 | | | | |
| 16 | Thrust Bearing 360 Deg. | 1301-027-321 | 1 | 1 | 1 | 1 | |
| 25 | Shaft Nut 6mm RHT | 1301-027-350 | 1 | 1 | 1 | 1 | |
| 25 | Shaft Nut 7mm LHT | 1301-027-351 | 1 | 1 | 1 | 1 | |
| 33 | Clamp Plate (Turbine) K27 | 1301-027-480 | 3 | | | | |
| 32 | Clamp Plate (Comp) K27 | 1301-027-500 | 4 | | | | |
| 34 | Lock Plate (Turbine) K27 | 1301-027-520 | 3 | | | | |
| 31 | Washer (Comp) | 1301-027-580 | 8 | | | | |
| 29 | Washer (Seal plate) | 1301-027-581 | 4 | 4 | 4 | 4 | |
| 35 | Bolt (Turbine) | 1301-027-600 | 6 | 6 | 6 | 6 | |
| 30 | Bolt (Seal Plate) Comp | 1301-027-610 | 8 | | | | |
| 28 | Bolt (Seal Plate to B/Hsg) | 1301-026-620 | 4 | 4 | 4 | 4 | |
| | | | | | Replace 5327-711-0053 | | Replace 5324-711-0500 |

Important Notes:

19.3mm Piston rings – Piston rings for the turbine end have a radial thickness of 1.2mm and the piston rings for the compressor end have a radial thickness of 1.0mm. To ensure a quality repair on a 19mm comp end design, the rings must be fitted the correct way around.

14mm Piston rings – Piston rings for the compressor end have a radial thickness of 1.0mm and are not interchangeable with the K14/16 piston ring which has the same OD but smaller (0.8mm) radial thickness.

See next page for oversize bearings and piston rings

K27 Type Oversize Repair Parts Available

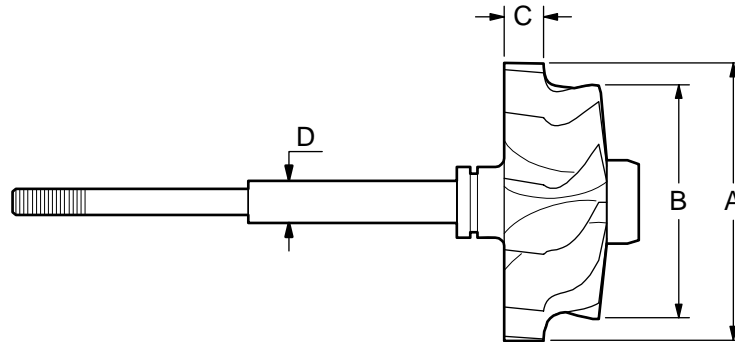
| Journal Bearings (Grooved OD) | | |
|---|-----------|---------------------|
| OE Part Number (Std/Std): 5326-155-1003 | | |
| Oversize's Available | | Part Number |
| OD +.010" | ID -.010" | 1301-027-121 |
| OD +.010" | ID Std | 1301-027-125 |
| OD Std. | ID -.010" | 1301-027-128 |

| Piston Rings | | | |
|---|------------|-------------|---------------------|
| OE Part Number (Turbine Std/Std): 5327-127-0102 | | | |
| OE Part Number (Comp 19mm Std/Std): 5223-127-0102 / 5326-127-0101 | | | |
| OE Part Number (Comp 14mm Std/Std): 5326-127-0103 | | | |
| Oversizes Available – Turbine & Comp End | | | |
| Description | OD | Width | Part Number |
| Ø19.3mm Turbine End | OD +0.010" | Wth Std | 1301-027-182 |
| Ø19.3mm Turbine End | OD +0.010" | Wth +0.010" | 1301-027-183 |
| Ø19.3mm Comp End | OD +0.010" | Wth Std | 1301-027-185 |

K27 Type

Major Replacement Parts - Detail

Shaft & Wheel



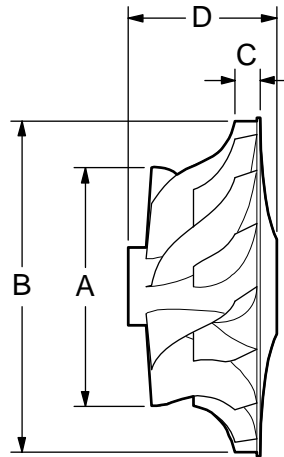
| To replace KKK.. | Melett Part No. | (A) Inducer Ø mm's | (B) Exducer Ø mm's | (C) Tip width mm's | D (Shaft OD) |
|------------------|-----------------|--------------------------|--------------------------|--------------------------|--------------|
| 5327-120-2103 | 1301-027-435 | 76.2 | 64.0 | 11.5 | 10.0 |
| 5327-120-2105 | 1301-027-435 | 76.2 | 64.0 | 11.5 | 10.0 |
| 5327-120-2108 | 1301-027-436 | 76.2 | 64.0 | 11.5 | 10.0 |
| 5327-120-2109 | 1301-027-438 | 76.2 | 68.2 | 11.0 | 10.0 |
| 5327-120-2110 | 1301-027-438 | 76.2 | 68.2 | 11.0 | 10.0 |
| 5327-120-2111 | 1301-027-437 | 70.0 | 62.0 | 11.0 | 10.0 |
| 5327-120-2112 | 1301-027-436 | 76.2 | 64.0 | 11.5 | 10.0 |
| 5327-120-2113 | 1301-027-438 | 76.2 | 68.2 | 11.0 | 10.0 |
| 5327-120-2117 | 1301-027-438 | 76.2 | 68.2 | 11.0 | 10.0 |
| 5327-120-2121 | 1301-027-437 | 70.0 | 62.0 | 11.0 | 10.0 |
| 5327-120-5000 | 1301-027-436 | 76.2 | 64.0 | 11.5 | 10.0 |
| 5327-120-5005 | 1301-027-438 | 76.2 | 68.2 | 11.0 | 10.0 |
| 5327-120-5006 | 1301-027-437 | 70.0 | 62.0 | 11.0 | 10.0 |
| 5327-120-5011 | 1301-027-437 | 70.0 | 62.0 | 11.0 | 10.0 |
| 5327-120-5012 | 1301-027-437 | 70.0 | 62.0 | 11.0 | 10.0 |
| 5327-120-5013 | 1301-027-435 | 76.2 | 64.0 | 11.5 | 10.0 |
| 5327-120-5016 | 1301-027-438 | 76.2 | 68.2 | 11.0 | 10.0 |
| 5327-120-5017 | 1301-027-438 | 76.2 | 68.2 | 11.0 | 10.0 |
| 5327-120-5075 | 1301-027-437 | 70.0 | 62.0 | 11.0 | 10.0 |
| 5327-120-5079 | 1301-027-437 | 70.0 | 62.0 | 11.0 | 10.0 |
| 5327-120-5080 | 1301-027-437 | 70.0 | 62.0 | 11.0 | 10.0 |
| 5327-120-5093 | 1301-027-437 | 70.0 | 62.0 | 11.0 | 10.0 |

Melett's fully qualified Engineers are available to answer any technical enquiry regarding limits, tolerances, and turbo set-up configurations. Email: Engineer@melett.com

K27 Type

Major Replacement Parts - Detail

Compressor Wheel



| To replace KKK... | Melett Part No. | KKK Trim | (A) Inducer \varnothing mm's | (B) Full \varnothing mm's | (C) Tip width mm's | (D) Total Hub Length | No. of Blades |
|-------------------|---------------------|----------|--------------------------------|-----------------------------|--------------------|----------------------|---------------|
| 5327-123-2000 | 1301-027-402 | 2963U | 45.6 | 72.3 | 6.3 | 29.4 | 12 |
| 5327-123-2002 | 1301-027-406 | 2970N | 50.6 | 72.4 | 7.6 | 29.4 | 12 |
| 5327-123-2003 | 1301-027-401 | 2960U | 43.5 | 72.3 | 5.4 | 29.3 | 12 |
| 5327-123-2006 | 1301-027-405 | 2966NV | 48.1 | 72.3 | 6.7 | 29.4 | 12 |
| 5327-123-2009 | 1301-027-400 | 3060G | 45.6 | 75.9 | 6.3 | 32.9 | 12 |
| 5327-123-2012 | 1301-027-403 | 3064G | 48.3 | 75.9 | 7.4 | 32.9 | 12 |
| 5327-123-2015 | 1301-027-404 | 3070G | 52.5 | 75.8 | 8.5 | 32.9 | 12 |
| 5327-123-2021 | 1301-027-415 | 3262MAA | 49.1 | 80.7 | 6.1 | 40.7 | 14 |
| 5327-123-2035 | 1301-027-425 | 3262MGB | 49.1 | 80.7 | 6.1 | 44.0 | 14 |
| 5327-123-2217 | 1301-027-425 | 3262MNA | 49.1 | 80.7 | 6.1 | 44.0 | 14 |
| 5327-123-2234 | 1301-027-402 | 2963U | 45.6 | 72.3 | 6.3 | 29.4 | 12 |
| 5327-123-2236 | 1301-027-406 | 2970N | 50.6 | 72.4 | 7.6 | 29.4 | 12 |
| 5327-123-2237 | 1301-027-401 | 2960U | 43.5 | 72.3 | 5.4 | 29.3 | 12 |
| 5327-123-2238 | 1301-027-405 | 2966NV | 48.1 | 72.3 | 6.7 | 29.4 | 12 |
| 5327-123-2301 | 1301-027-400 | 3060G | 45.6 | 75.9 | 6.3 | 32.9 | 12 |
| 5327-123-2302 | 1301-027-403 | 3064G | 48.3 | 75.9 | 7.4 | 32.9 | 12 |
| 5327-123-2303 | 1301-027-404 | 3070G | 52.5 | 75.8 | 8.5 | 32.9 | 12 |

K27 Type

Major Replacement Parts - Detail

Bearing Housing

| Melett Part No. | To replace KKK... | Description |
|-----------------|-------------------|--------------------------|
| 1301-027-450 | 5327-150-0001 | Large Turbine end flange |
| 1301-027-450 | 5327-150-0004 | Large Turbine end flange |
| 1301-027-450 | 5327-150-0006 | Large Turbine end flange |
| 1301-027-450 | 5327-150-0010 | Large Turbine end flange |
| 1301-027-455 | 5327-150-0012 | Small Turbine end flange |
| 1301-027-455 | 5327-150-0016 | Small Turbine end flange |

Backplate

| Melett Part No. | To replace KKK... | Comp Wheel Recess(A) mm's | Overall Diameter(C) mm's | Piston ring bore(D) Mm's |
|-----------------|-------------------|---------------------------|--------------------------|--------------------------|
| 1301-027-360 | 5327-151-5706 | 78.0 | 158.7 | 19.0 |
| 1301-027-360 | 5327-151-5710 | 78.0 | 158.7 | 19.0 |
| 1301-027-360 | 5327-151-5730 | 78.0 | 158.7 | 19.0 |
| 1301-027-361 | 5327-151-5700 | 74.0 | 158.7 | 19.0 |
| 1301-027-361 | 5327-151-5707 | 74.0 | 158.7 | 19.0 |
| 1301-027-361 | 5327-151-5734 | 74.0 | 158.7 | 19.0 |
| 1301-027-362 | 5327-151-5715 | 83.0 | 158.7 | 19.0 |
| 1301-027-362 | 5327-151-5732 | 83.0 | 158.7 | 19.0 |

Turbine Housing

| Melett Part No. | To replace KKK Hsg No.... | Description | Entry Detail | To fit turbo No. |
|-----------------|---------------------------|---------------------------|--------------|-------------------------|
| 1301-027-850 | 5223-101-6320 | Turbine Housing K27 6.11 | Single | 5327-988-6002 |
| 1301-027-851 | 5327-101-6305 | Turbine Housing K27 9.11 | Single | 5327-988-6003/6037/6720 |
| 1301-027-852 | 5223-101-6323 | Turbine Housing K27 11.11 | Single | 5327-988-6004/7003 |
| 1301-027-853 | - | Turbine Housing K27 11.11 | Single | CZ K27-80 |
| 1301-027-854 | - | Turbine Housing K27 13.21 | Twin | CZ K27-61 |
| 1301-027-855 | - | Turbine Housing K27 13.11 | Single | CZ K27-80 |
| 1301-027-863 | - | Turbine Housing K27 17.21 | Twin | CZ K27-98 |

Notes:

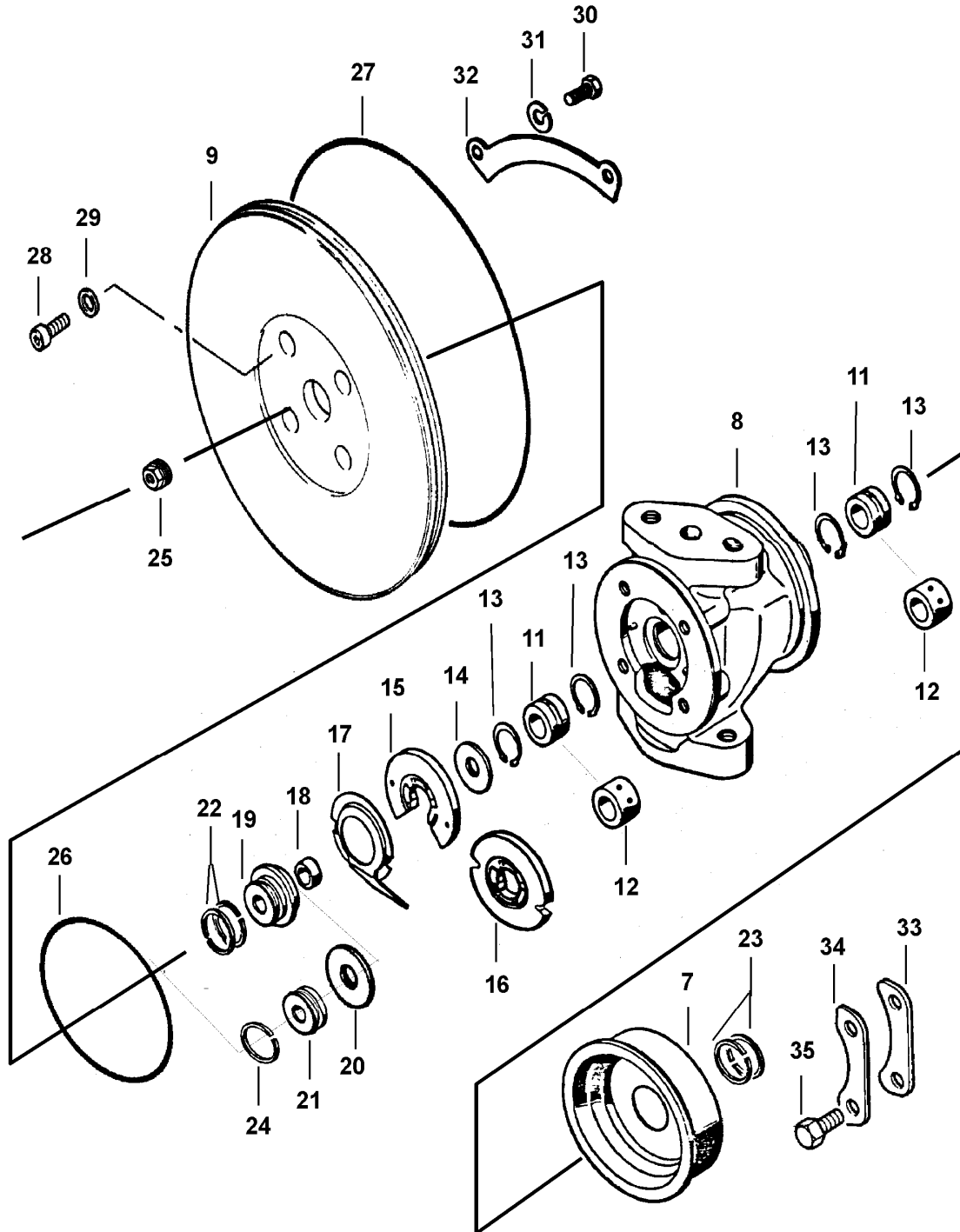
- 1) In the description, the first number denotes the A/R – e.g. K27 9.11 A/R = 9.
- 2) All the above housings have a 4-bolt outlet

Borg Warner K28/K29 Type Turbos

Common Service Parts
Oversize Service Parts
Major Replacement Parts

K28/29 Type

Common Service Parts



This illustration is a guide and does not necessarily show all parts accurately

K28/29 Type Repair Parts & Service Kits

All parts are available for purchase as individual components or in the following popular Repair Kits

| Key | Description | MELETT Number | Qty Per Turbo | Repair Kit 19mm 1301-028-750 | Repair Kit 14mm 1301-027-751 | Repair Kit 14&19mm 1301-028-752 | Thrust Kit 19mm 1301-027-766 |
|-----|---|---------------|---------------|---------------------------------|---------------------------------|------------------------------------|---------------------------------|
| 12 | Bearing (Smooth OD) | 1301-027-100 | 2 | | | | |
| 11 | Bearing (Grooved OD) | 1301-027-101 | 2 | 2 | 2 | 2 | |
| 13 | Snap Ring | 1100-040-140 | 4 | 4 | 4 | 4 | |
| 26 | O Ring (B/Hsg to Seal Plate) | 1250-030-150 | 1 | 1 | 1 | 1 | |
| 27 | O Ring (Seal/P to Comp/Hsg) Ø152mm - K26/27 | 1301-027-150 | 1 | | 1 | | |
| 27 | O Ring (Seal/P to Comp/Hsg) Ø175mm - K27/28 | 1301-027-151 | 1 | 1 | 1 | 1 | |
| 27 | O Ring (Seal/P to Comp/Hsg) Ø184.5mm - K27/28/29 | 1301-028-150 | 1 | 1 | 1 | 1 | |
| 23 | Piston Ring (Turb) Ø19.3 x 1.2mm Radial | 1301-027-161 | 2 | 2 | 2 | 2 | |
| 22 | Piston Ring (Comp) Ø19.3 x 1.0mm Radial | 1301-027-170 | 0/2 | 2 | | 2 | |
| 24 | Piston Ring Ø14.0mm | 1301-027-171 | 0/1 | | 1 | 1 | |
| 19 | Flinger Sleeve (19.3 P/R) | 1301-027-200 | 1 | | | | 1 |
| 18 | Spacer Sleeve (19.3 P/R) | 1301-027-220 | 1 | | | | 1 |
| 14 | Thrust Ring (19.3 P/R) | 1301-027-240 | 1 | | | | 1 |
| 21 | Flinger Sleeve (14.0 P/R) | N/A | 1 | | | | |
| 17 | Oil Deflector | 1301-027-310 | 1 | | | | |
| 16 | Thrust Bearing 360 Deg. | 1301-027-321 | 1 | 1 | 1 | 1 | |
| 25 | Shaft Nut 6mm RHT | 1301-027-350 | 1 | 1 | 1 | 1 | |
| 25 | Shaft Nut 7mm LHT | 1301-027-351 | 1 | 1 | 1 | 1 | |
| 33 | Clamp Plate (Turbine) K27 | 1301-027-480 | 3 | | | | |
| 32 | Clamp Plate (Comp) K27 | 1301-027-500 | 4 | | | | |
| 34 | Lock Plate (Turbine) K27 | 1301-027-520 | 3 | | | | |
| 31 | Washer (Comp) | 1301-027-580 | 8 | | | | |
| 29 | Washer (Seal plate) | 1301-027-581 | 4 | 4 | 4 | 4 | |
| 35 | Bolt (Turbine) | 1301-027-600 | 6 | 6 | 6 | 6 | |
| 30 | Bolt (Seal Plate) Comp | 1301-027-610 | 8 | | | | |
| 28 | Bolt (Seal Plate to B/Hsg) | 1301-026-620 | 4 | 4 | 4 | 4 | |
| | | | | Replace 5328-711-0013 | Replace 5327-711-0053 | Replace 5328-711-0009 | Replace 5324-711-0500 |

Important Notes:

19.3mm Piston rings – Piston rings for the turbine end have a radial thickness of 1.2mm and the piston rings for the compressor end have a radial thickness of 1.0mm. To ensure a quality repair on a 19mm comp end design, the rings must be fitted the correct way around.

14mm Piston rings – Piston rings for the compressor end have a radial thickness of 1.0mm and are not interchangeable with the K14/16 piston ring which has the same OD but smaller (0.8mm) radial thickness.

See over for Oversize Repair Parts

K28/29 Type

Oversize Repair Parts Available

| Journal Bearings (Grooved OD) | | |
|---|-----------|---------------------|
| OE Part Number (Std/Std): 5326-155-1003 | | |
| Oversize's Available | | Part Number |
| OD +.010" | ID -.010" | 1301-027-121 |
| OD +.010" | ID Std | 1301-027-125 |
| OD Std. | ID -.010" | 1301-027-128 |

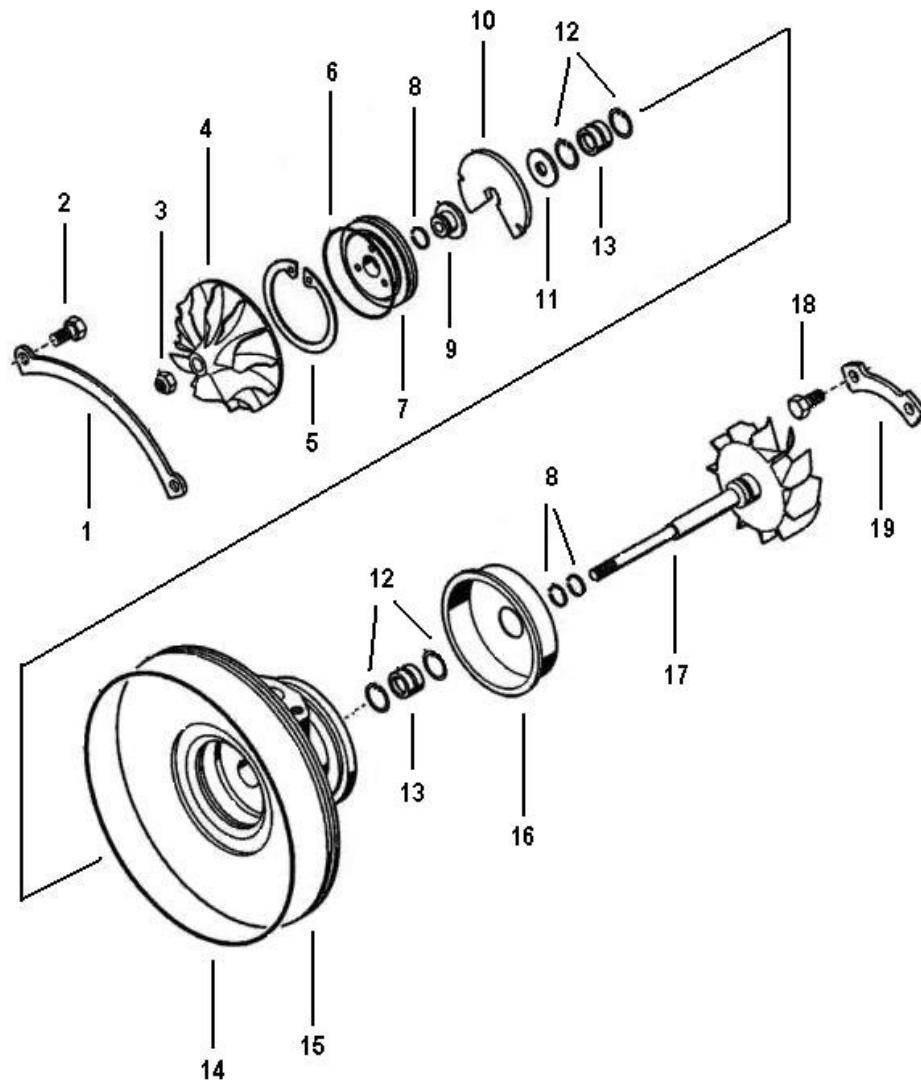
| Piston Rings | | | |
|--|------------|-------------|---------------------|
| OE Part Number (Turbine Std/Std): 5327-127-0102 | | | |
| OE Part Number (Comp 19mm Std/Std): 5223-127-0102 / 5326-127-0101 | | | |
| OE Part Number (Comp 14mm Std/Std): 5326-127-0103 | | | |
| Oversizes Available – Turbine & Comp End | | | |
| Description | OD | Width | Part Number |
| Ø19.3mm Turbine End | OD +0.010" | Wth Std | 1301-027-182 |
| Ø19.3mm Turbine End | OD +0.010" | Wth +0.010" | 1301-027-183 |
| | | | |
| Ø19.3mm Comp End | OD +0.010" | Wth Std | 1301-027-185 |

Borg Warner K31 Type Turbos

Common Service Parts
Oversize Service Parts

K31 Type

Repair Parts & Service Kits



K31 Type

Repair Parts & Service Kits

All parts are available for purchase as individual components or in the following popular Repair Kits

| Key | Description | MELETT | | Minor Kit | Major Kit |
|-----|--------------------------|--------------|----------------|--------------------------|--|
| | | Part Number | OE Part Number | 1301-031-750 | 1301-031-755 |
| 13 | Journal Bearing | 1301-031-100 | 5331-155-1000 | 2 | 2 |
| 12 | Retaining Ring | 1301-031-140 | 5004-079-0013 | 4 | 4 |
| 14 | O' ring (196.0 x 2.83) | 1301-031-150 | 5331-158-0503 | 1 | 1 |
| 14 | O' ring (166.5 x 3.0) | 1301-031-155 | 5329-158-0500 | 1 | 1 |
| 6 | O' ring (59.6 x 2.7) | 1301-031-156 | 5331-158-0501 | 1 | 1 |
| 8 | Piston Ring T.E. | 1301-027-161 | 5327-127-0102 | 2 | 2 |
| 8 | Piston Ring C.E. | 1301-031-170 | 5331-127-0100 | 1 | 1 |
| 9 | Flinger Sleeve | 1301-031-200 | 5329-127-0401 | | 1 |
| 11 | Thrust Ring | 1301-031-240 | 5331-124-0000 | | 1 |
| 10 | Thrust Bearing | 1301-031-320 | 5331-155-1301 | 1 | 1 |
| 3 | Shaft Nut | 1301-031-351 | 5331-128-5001 | 1 | 1 |
| 18 | Set Screw T.E. (M8 x 14) | 1301-031-600 | 5327-109-0402 | 6 | 6 |
| - | Gasket Ring | 1301-031-790 | 5008-037-0208 | 1 | 1 |
| | | | | Replace 5331-711-0005 | Replace 5331-711-0005 & 5331-711-0503 |

Oversize Repair Parts Available

| Journal Bearings | |
|---|-------------|
| Original KKK Part Number (Std/Std): 5331-155-1000 | |
| Oversize's Available | Part Number |
| Oversize bearings in development – contact Melett Sales for latest availability | |

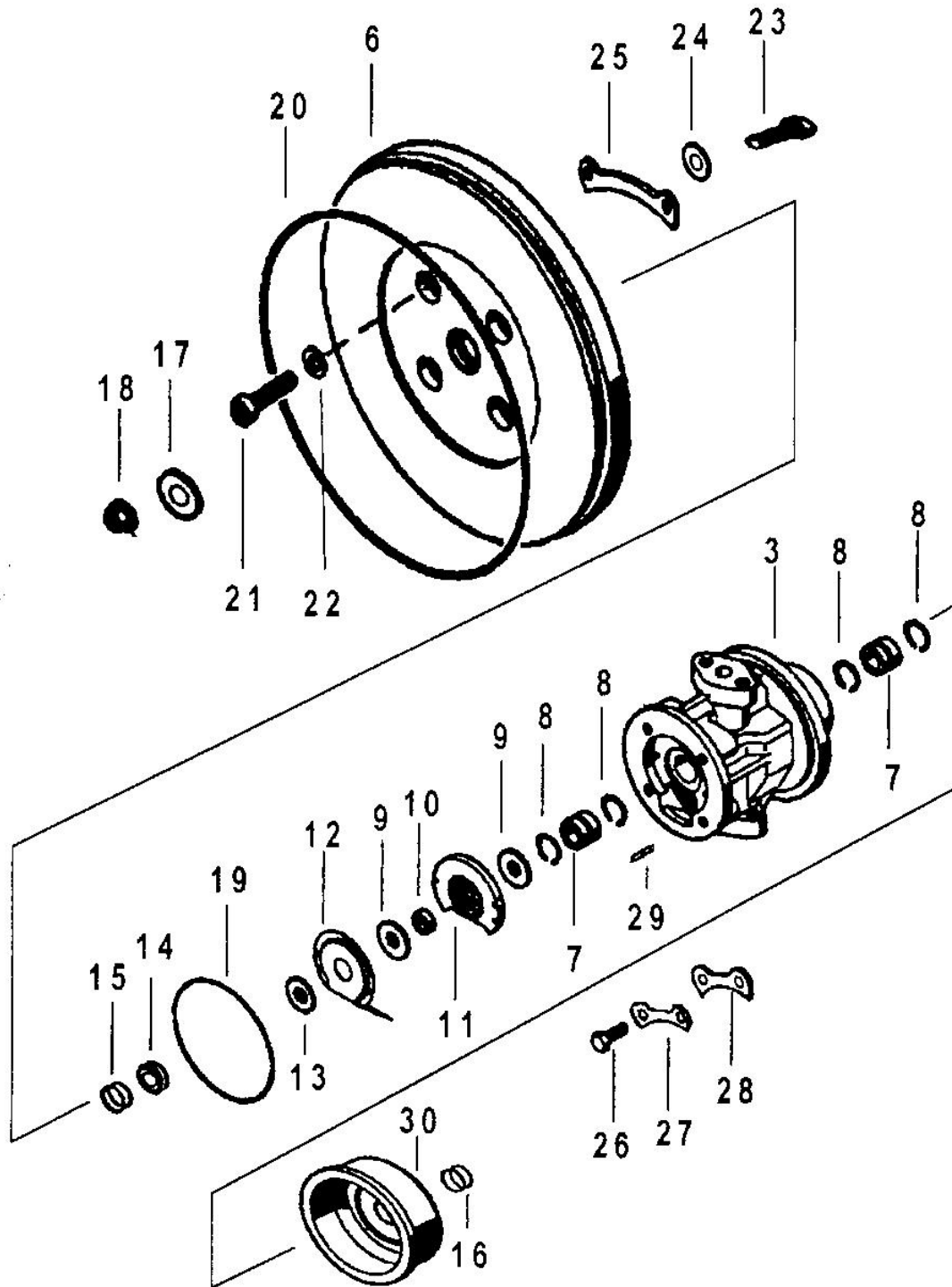
| Piston Rings | | | |
|---|------------|-------------|--------------|
| OE Part Number (Turbine Std/Std): 5327-127-0102 | | | |
| Oversizes Available – Turbine & Comp End | | | |
| Description | OD | Width | Part Number |
| Ø19.3mm Turbine End | OD +0.010" | Wth Std | 1301-027-182 |
| Ø19.3mm Turbine End | OD +0.010" | Wth +0.010" | 1301-027-183 |

Borg Warner K33 Type Turbos

Common Service Parts
Oversize Service Parts
Major Replacement Parts
(Shaft & Wheels, Compressor Wheels etc)

K33 Type

Common Service Parts



This illustration is a guide and does not necessarily show all parts accurately

K33 Type

Repair Parts & Service Kits

All parts are available for purchase as individual components or in the following popular Repair Kits

| Key | Part Description | MELETT Part Number | Qty Per Turbo | Repair Kit Small brgs 1301-033-750 | Repair Kit Large brgs 1301-033-751 |
|-----|------------------------------|---------------------|---------------|--|--|
| 7 | Bearing Large | 1301-036-100 | 2 | | 2 |
| 7 | Bearing Small | 1301-031-100 | 2 | 2 | |
| 8 | Snap Ring Large | 1301-036-140 | 4 | | 4 |
| 8 | Snap Ring Small | 1301-031-140 | 4 | 4 | |
| 9 | Thrust Ring | 1301-036-240 | 2 | | |
| 10 | Spacer Sleeve | 1301-036-220 | 1 | | |
| 11 | Thrust Bearing | 1301-036-321 | 1 | 1 | 1 |
| 12 | Oil Deflector | 1301-036-310 | 1 | | |
| 13 | Oil Control Sleeve | 1301-036-260 | 1 | | |
| 14 | Flinger Sleeve | 1301-036-200 | 1 | | |
| 15 | Piston Ring – Turbine/Comp. | 1301-027-161 | 3 | 3 | |
| 15 | Piston Ring - Comp. | 1150-400-160 | 2 | | 2 |
| 16 | Piston Ring - Turbine | 1150-400-160 | 2 | | 2 |
| 17 | Shaft Nut Washer | 1301-036-355 | 1 | | 1 |
| 18 | Shaft Nut M8 LH | 1301-031-351 | 1 | 1 | |
| 18 | Shaft Nut | 1301-036-350 | 1 | | 1 |
| 19 | "O" Ring S/P to B/Hsg K33/36 | 1301-033-150 | 1 | 1 | 1 |
| 20 | "O" Ring Comp Hsg to S/P K33 | 1301-028-150 | 1 | 1 | 1 |
| 21 | Bolt Seal Plate | 1301-036-620 | 4 | 4 | 4 |
| 22 | Washer Seal Plate | 1301-036-581 | 4 | 4 | 4 |
| 23 | Bolt C/Hsg to Seal plate K33 | 1301-027-610 | 8 | | 8 |
| 24 | Spring Washer C/Hsg K33 | 1301-027-580 | 8 | | 8 |
| 25 | Clamp Plate - Comp. K33 | N/A | 4 | | |
| 26 | Bolt Turbine Housing | 1301-036-600 | 6/8 | 8 | 6 |
| 27 | Lockplate | 1301-036-520 | 3 | | |
| 28 | Clamp Plate - Turbine | 1301-036-500 | 3 | | 3 |
| 29 | Roll Pin T/Brg ret. In B/Hsg | 1301-027-195 | 2 | | |
| 30 | Heat Shield | 1301-036-340 | 1 | | |
| | | | | Similar to 5333-711-0006 | |

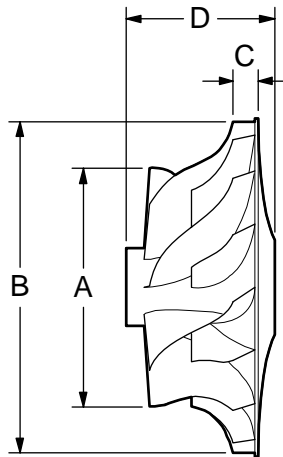
Oversize Repair Parts Available

Oversize parts are in development – contact Melett Sales for latest availability

K33 Type

Major Replacement Parts - Detail

Compressor Wheel



| Melett Part No. | To replace KKK... | KKK Trim | (A) Inducer ϕ mm's | (B) Full ϕ mm's | (C) Tip width mm's | (D) Total Hub Length | No. of Blades |
|---------------------|-------------------|----------|-------------------------|----------------------|--------------------|----------------------|---------------|
| 1301-033-400 | 5336-123-2021 | 4064 | 63.9 | 102.0 | 7.9 | 51.3 | 14 |
| 1301-033-401 | 5336-123-2017 | 4067 | 67.0 | 102.0 | 7.7 | 52.2 | 14 |

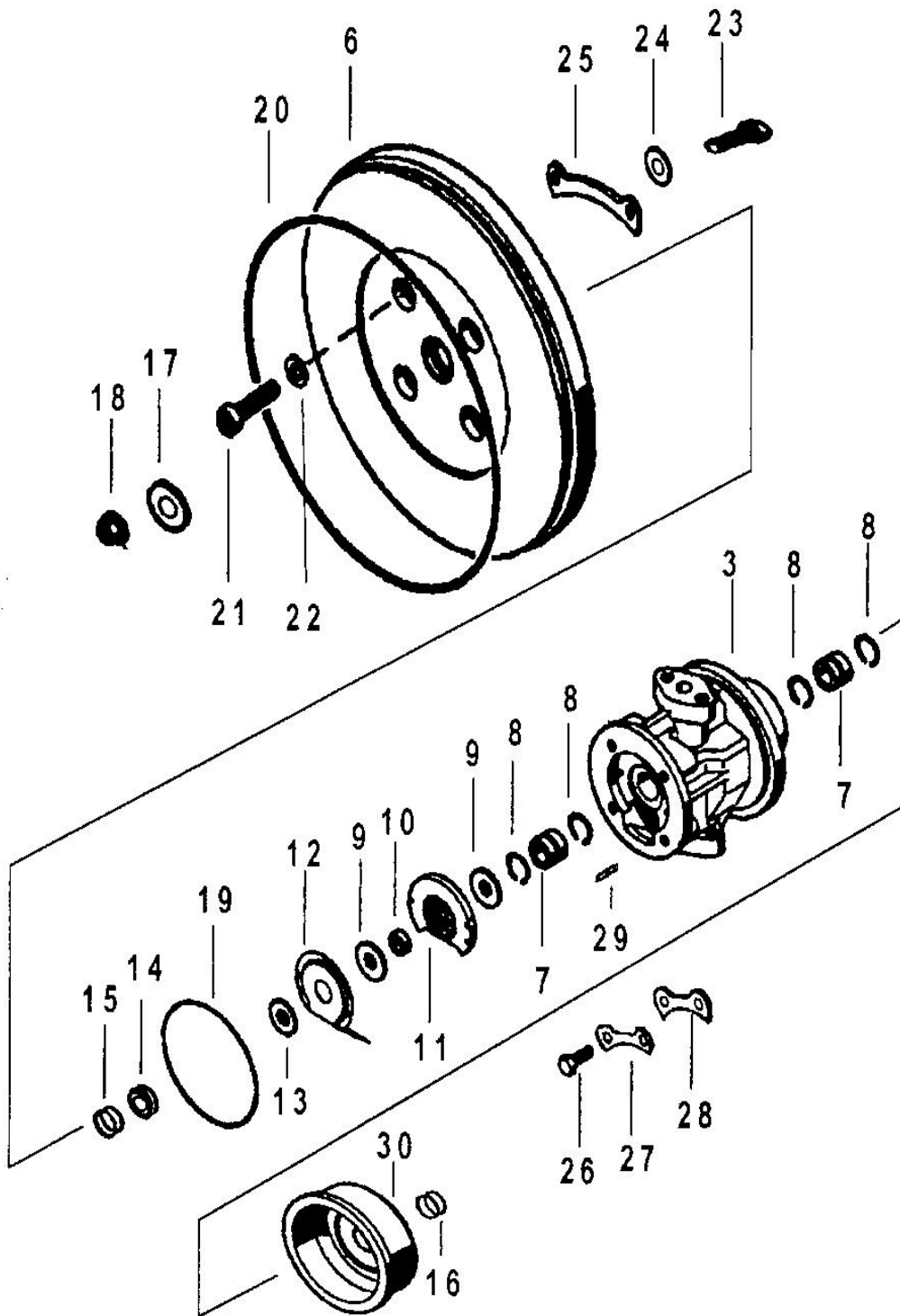
Melett's fully qualified Engineers are available to answer any technical enquiry regarding limits, tolerances, and turbo set-up configurations. Email: Engineer@melett.com

Borg Warner K36/K37 Type Turbos

Common Service Parts
Oversize Service Parts
Major Replacement Parts
(Shaft & Wheels, Compressor Wheels etc)

K36/K37 Type

Common Service Parts



This illustration is a guide and does not necessarily show all parts accurately

K36/K37 Type

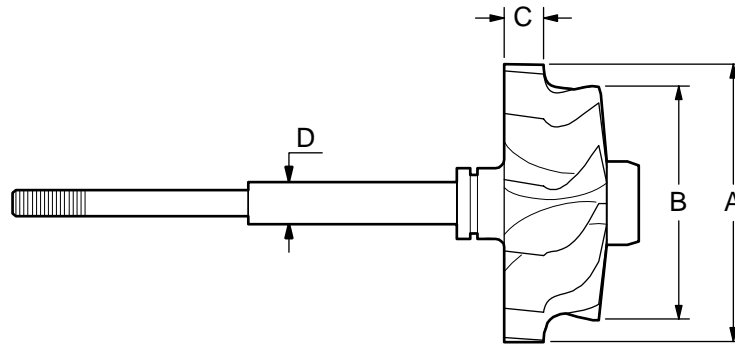
Repair Parts & Service Kits

All parts are available for purchase as individual components or in the following popular Repair Kits

| Key | Part Description | MELETT Part Number | Qty Per Turbo | Service kit K36 1301-036-751 | Service kit K37 1301-037-751 |
|-----|------------------------------|--------------------|---------------|---------------------------------|---------------------------------|
| 7 | Bearing Std | 1301-036-100 | 2 | 2 | 2 |
| 8 | Snap Ring | 1301-036-140 | 4 | 4 | 4 |
| 9 | Thrust Ring | 1301-036-240 | 2 | | |
| 10 | Spacer Sleeve | 1301-036-220 | 1 | | |
| 11 | Thrust Bearing | 1301-036-321 | 1 | 1 | 1 |
| 12 | Oil Deflector | 1301-036-310 | 1 | | |
| 13 | Oil Control Sleeve | 1301-036-260 | 1 | | |
| 14 | Flinger Sleeve | 1301-036-200 | 1 | | |
| 15 | Piston Ring - Comp. | 1150-400-160 | 2 | 2 | 2 |
| 16 | Piston Ring – Turbine | 1150-400-160 | 2 | 2 | 2 |
| 17 | Shaft Nut Washer | 1301-036-355 | 1 | 1 | 1 |
| 18 | Shaft Nut | 1301-036-350 | 1 | 1 | 1 |
| 19 | "O" Ring S/P to B/Hsg K33/36 | 1301-033-150 | 1 | 1 | 1 |
| 20 | "O" Ring Comp Hsg to S/P K37 | 1250-404-155 | 1 | | 1 |
| 20 | "O" Ring Comp Hsg to S/P K36 | 1301-036-150 | 1 | 1 | |
| 21 | Bolt Seal Plate | 1301-036-620 | 4 | 4 | 4 |
| 22 | Washer Seal Plate | 1301-036-581 | 4 | 4 | 4 |
| 23 | Bolt C/Hsg to Seal plate K36 | 1301-036-610 | 8 | | |
| 24 | Spring Washer C/Hsg K36 | 1301-036-580 | 8 | | |
| 25 | Clamp Plate - Comp. K36 | 1301-036-480 | 4 | 4 | |
| 26 | Bolt Turbine Housing | 1301-036-600 | 6 | 6 | 6 |
| 27 | Lockplate | N/A | 3 | | |
| 28 | Clamp Plate – Turbine | 1301-036-500 | 3 | | |
| 29 | Roll Pin T/Brg ret. In B/Hsg | N/A | 2 | | |
| | | | | Similar To 5334-711-0000 | Similar To 5334-711-0001 |

K36 Type Major Replacement Parts - Detail

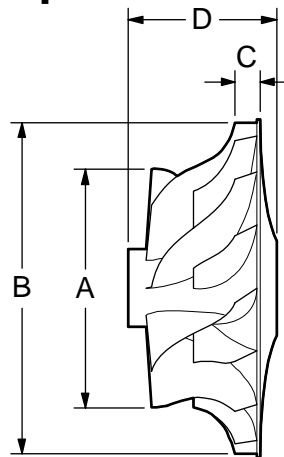
Shaft & Wheel



| Melett Part No. | To replace KKK.. | (A) Inducer ø mm's | (B) Exducer ø mm's | (C) Tip width mm's | D (Shaft OD) | Shaft Length (Comp wheel) mm's |
|---------------------|------------------|--------------------------|--------------------------|--------------------------|--------------|--------------------------------------|
| 1301-036-435 | 5336-120-2101 | 96.5 | 81.0 | 14.7 | 14.3 | 70.6 |
| 1301-036-436 | 5336-120-2102 | 96.5 | 86.3 | 14.7 | 14.3 | 70.6 |
| 1152-303-435 | 5336-120-2103 | 96.5 | 86.4 | 14.7 | 14.3 | 83.2 |
| 1301-036-437 | 5336-120-2104 | 96.5 | 81.0 | 14.7 | 14.3 | 78.2 |
| 1152-303-436 | 5336-120-2117 | 96.5 | 81.1 | 14.7 | 14.3 | 83.0 |

Melett's fully qualified Engineers are available to answer any technical enquiry regarding limits, tolerances, and turbo set-up configurations. Email: Engineer@melett.com

Compressor Wheel



| Melett Part No. | To replace KKK... | KKK Trim | (A) Inducer ø mm's | (B) Full ø mm's | (C) Tip width mm's | (D) Total Hub Length | No. of Blades |
|---------------------|-------------------|----------|--------------------------|-----------------------|--------------------------|-------------------------|---------------|
| 1301-036-400 | 5334-123-2002 | 3766 | 62.4 | 94.0 | 8.3 | 36.1 | 12 |
| 1301-036-403 | 5334-123-2008 | 3566 | 59.5 | 94.0 | 8.0 | 36.1 | 12 |
| 1301-036-425 | 5336-123-2000 | 4064 | 63.9 | 102.0 | 7.8 | 47.8 | 14 |
| 1301-036-416 | 5336-123-2001 | 4064 | 63.9 | 102.0 | 7.8 | 47.8 | 14 |
| 1301-036-415 | 5336-123-2008 | 4060 | 59.9 | 102.0 | 7.0 | 47.8 | 14 |