

Garrett Contents

Turbo Model	Catalogue Contents	Page No.	Notes
T2/T25/T28	Dynamic Repair Kits	3	
T2/T25/T28	Carbon Seal Repair Kits	5	
T2/T25/T28	Performance Parts and Upgrade Kits (Dynamic Seal)	7	
T2/T25/T28	Performance Parts and Upgrade Kits (Carbon Seal)	9	
T2/T25/T28	Major Parts (Shaft Wheels)	10	
T2/T25/T28	Major Parts (Comp Wheels, Bearing Housings)	11	Updated
T2/T25/T28	Turbine Housings	12	
T3	Dynamic Repair Kits / Oversize Parts	15	
T3	Carbon Repair Kits / Oversize Parts	17	
T3	Performance Parts and Upgrade Kits (Dynamic Seal)	19	
T3	Performance Parts and Upgrade Kits (Carbon Seal)	21	
T3	Major Parts (Shaft Wheels)	22	
T3	Major Parts (Comp Wheels, Bearing Housings)	23	Updated
T3	Turbine Housings	24	
T04B/E	Dynamic Repair Kits / Oversize Parts	27	
T04B/E	Carbon Repair Kits / Oversize Parts	29	
T04B/E	Performance Parts and Upgrade Kits (Dynamic Seal)	31	
T04B/E	Performance Parts and Upgrade Kits (Carbon Seal)	33	
T04B/E	Major Parts (Shaft Wheels)	34	Updated
T04B/E	Major Parts (Comp Wheels, Bearing Housings)	35	Updated
T04B/E	Turbine Housings (CAT)	36	
T04S	Repair kits / Upgrade kits	39	
T12	Repair Kits	43	
T12	Oversize Bearings & Piston Rings	44	
T12	Major Parts (Shafts, Comp Wheels, Turbine Hsgs)	46	
T18	Repair Kits / Oversize Bearings & Piston Rings	49	
T18	Major Parts (Shaft Wheel)	50	
T18A	Repair Kits / Oversize Bearings & Piston Rings	53	
T45 / T51	Repair Kits / Oversize Bearings & Piston Rings	57	

Continued over.....

Garrett Contents

Turbo Model	Catalogue Contents	Page No.	Notes
TL-TV-TW 60/70/80	Repair Kits / Oversize Parts (T18 Style Thrust)	61	
TL-TV-TW 60/70/80	Repair Kits / Oversize Parts (T18 Journal / T45 Style Thrust)	63	
TL-TV-TW 60/70/80	Major Parts (Shaft Wheels)	64	
TL-TV-TW 60/70/80	Major Parts (Comp Wheels)	65	
TL-TV-TW 60/70/80	Major Parts (Bearing Housing, Heat Shields and Backplates)	66	
TV 91-94	Repair Kits / Oversize Bearings & Piston Rings	69	
TV 91-94	Major Parts	70	
GT12	Repair parts	73	
GT/VNT15-25	Service Parts & Repair Kits 1 st Generation	77	
GT/VNT15-25	Service Parts & Repair Kits 2 nd Generation	79	
GT/VNT15-25	Summary of all Repair kits	80	
GT/VNT15-25	Oversize Bearings & Piston Rings	81	
GT/VNT15-25	Major Parts (Shaft & Wheels)	82	Updated
GT/VNT15-25	Major Parts (Comp Wheels)	83	Updated
GT/VNT15-25	Major Parts (Seal plates)	84	
GT/VNT15-25	Major Parts (Bearing Housings, Actuators)	85	NEW
GT20/25 'T2 Style'	OE Turbo numbers for identification	85	
GT30 / 32 / 35	Repair Kits / Oversize Bearings & Piston Rings	91	Updated
GT37 / GT40	Repair Kits / Oversize Bearings & Piston Rings	95	Updated
GT42 / GT45	Repair Kits / Oversize Bearings & Piston Rings	99	Updated
GT50 BTG UTV	Repair Parts & Service Kits	103	NEW

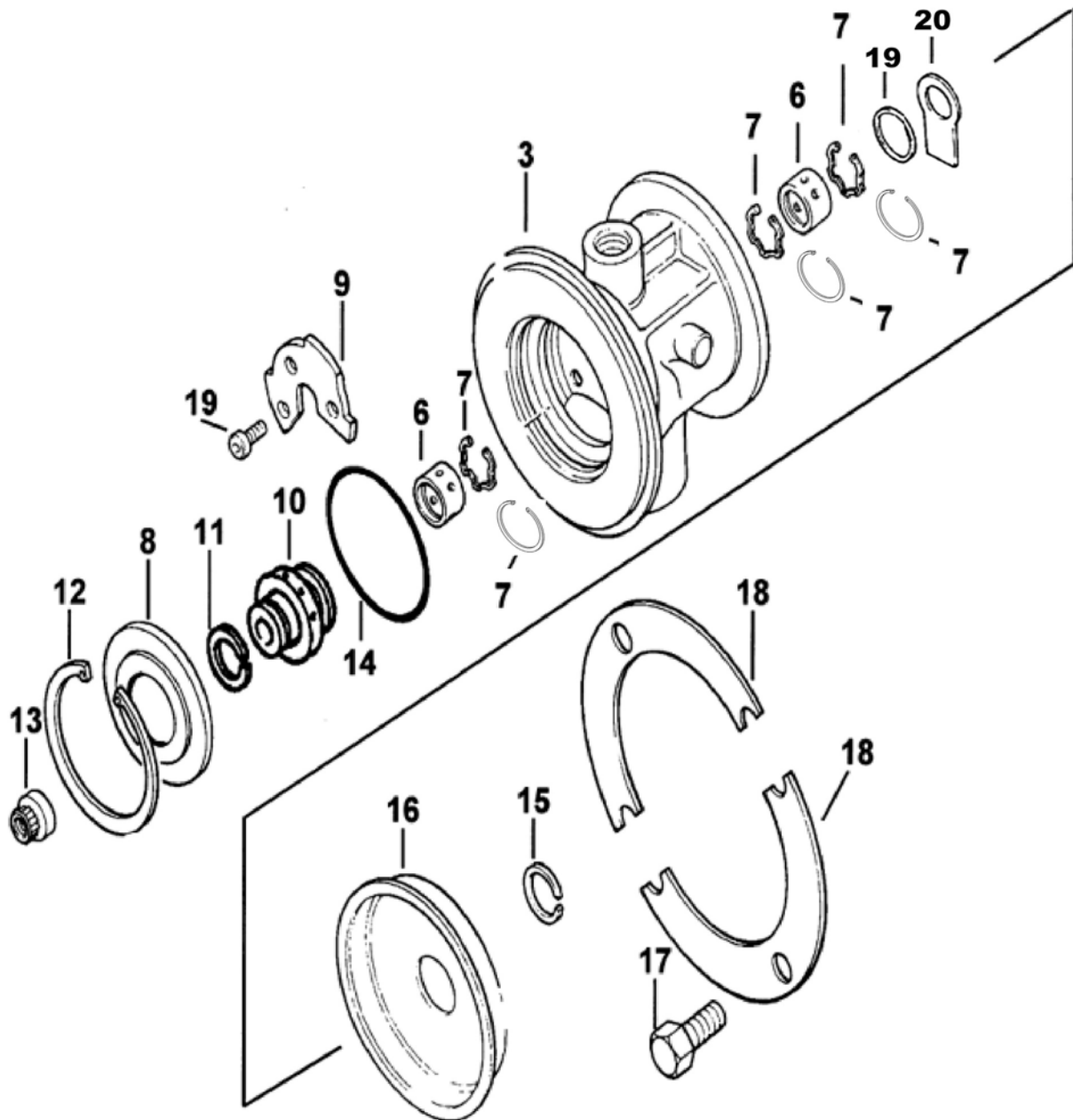
Garrett T2/T25/T28 Type Turbos

Dynamic & Carbon Seal Standard and Upgrade Parts

Common Service Parts
Upgrade Service Parts
Oversize Service Parts
Shaft and Wheels
Compressor Wheels
Turbine Housings

T2/25/28 Type (Dynamic Seal)

Common Service Parts



T2/25/28 Type (Dynamic Seal)

Repair Parts & Service Kits

All parts are available for purchase as individual components or in the following popular Repair Kits

Key	Part Description	Melett	Qty/	Minor Kit	Minor Kit	Major Kit	Major Kit
		Part Number	Turbo	1100-020-750 Narrow Brg	1100-025-750 Wide Brg	1100-020-760 Narrow Brg	1100-025-760 Wide Brg
6	Bearing (Short) Std. (7.67mm)	1100-020-100	2	2		2	
6	Bearing (Long) Std (9.37mm)	1100-025-100	2		2		2
7	Circlip (J-Brg Serpentine)	1100-025-140	3	3	3	3	3
7	Circlip (J-Brg GT20)	1102-020-140	3	3	3	3	3
-	Retaining ring (Oil Deflector)	1100-025-141	1				1
19	Shim (Oil Deflector)	1100-025-250	1				1
8	Seal Plate	1100-025-300	1	1	1	1	1
9	Thrust Bearing (270° 3 hole fix)	1100-025-320	1	1	1	1	1
10	Thrust Collar	1100-025-200	1			1	1
11	Piston Ring (Comp)	1100-025-170	1	1	1	1	1
13	Shaft nut	1100-025-350	1	1	1	1	1
14	O Ring (Seal plate)	1100-025-150	1	1	1	1	1
	O Ring (T2 C/Cover 73mm)	1100-025-155	1				1
	O Ring (T25 C/Cover 82mm)	1100-025-156	1				1
15	Piston Ring (Turb)	1100-025-160	1	1	1	1	1
17	Bolts (Brg Hsg to turb Hsg)	1100-025-600	4				4
18	Screw (T-Brg) T-Torx Patched	1100-025-620	3	3	3	3	3
-	Actuator Clip	1100-025-395	1	1	1	1	1
							Similar to... 709143-1

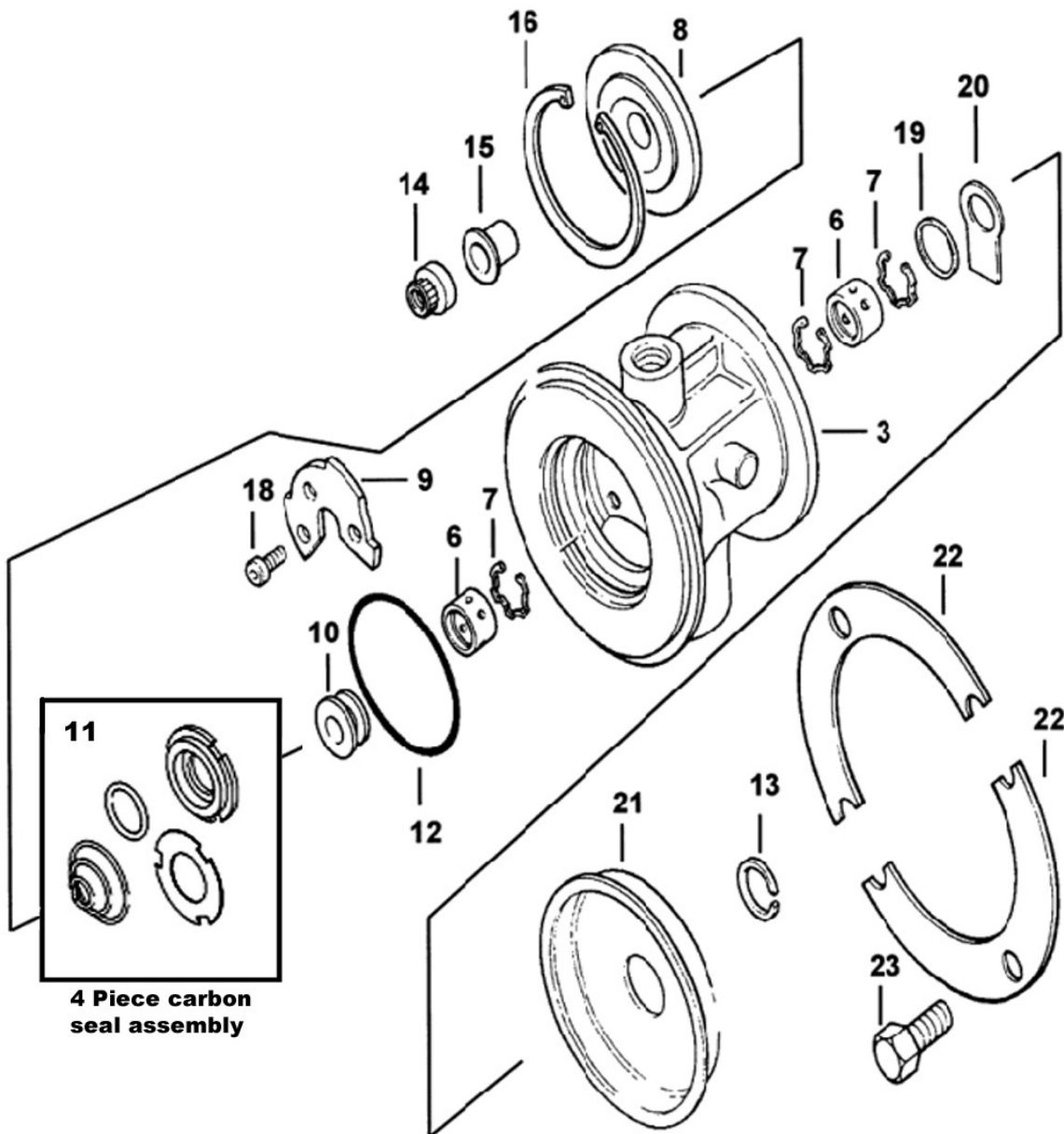
Oversize Repair Parts Available

Journal Bearings			
Oversize's Available		Part Number (Narrow Brg)	Part Number (Wide Bearing)
OD +.005"	ID -.005"	1100-020-110	1100-025-110
OD +.005"	ID Std	1100-020-114	1100-025-114
OD Std	ID -.005"	1100-020-117	1100-025-117
OD +.010"	ID -.010"	1100-020-120	1100-025-120
OD +.010"	ID Std	1100-020-124	1100-025-124
OD Std	ID -.010"	1100-020-127	1100-025-127
OD +.010"	ID -.005"	1100-020-131	1100-025-131
OD +.015"	ID Std	1100-020-135	N/A

Piston Rings		
Oversize's Available		Part Number
Turbine End		
OD +.010	Wth Std	1100-025-180
OD Std	Wth +.010	1100-025-181
OD +.010	Wth +.010	1100-025-182
OD Std	Wth +.020	1100-025-183
OD +.010	Wth +.020	1100-025-184

T2/25/28 Type (Carbon Seal)

Common Service Parts



T2/25/28 Type (Carbon Seal)

Repair Parts & Service Kits

All parts are available for purchase as individual components or in the following popular Repair Kits

Key	Part Description	Melett Part Number	Quantity Per Turbo	Minor Kit (Narrow brg) 1100-020-754	Minor Kit (Wide brg) 1100-025-754
6	Bearing (Short) Std. (7.67mm)	1100-020-100	2	2	
6	Bearing (Long) Std (9.37mm)	1100-025-100	2		2
7	Circlip (J-Brg - Castellated)	1100-025-140	3	3	3
7	Circlip (J-Brg GT20)	1102-020-140	3	3	3
8	Seal Plate (carbon seal)	N/A	1		
9	Thrust Bearing (270° 3 hole fix)	1100-025-320	1	1	1
10	Thrust Collar (Carbon Seal)	1100-020-200	1		
15	Thrust Spacer (Carbon Seal)	1100-020-220	1		
11	Carbon Seal Kit (4 piece)	1100-025-270	1	1	1
14	Shaft nut	1100-025-350	1	1	1
12	O Ring (Seal plate)	1100-025-150	1	1	1
-	O Ring (T2 C/Cover 73mm)	1100-025-155	1		
-	O Ring (T25 C/Cover 82mm)	1100-025-156	1		
13	Piston Ring (Turb)	1100-025-160	1	1	1
21	Heat Shield	N/A	1		
23	Bolts (Brg Hsg to turb Hsg)	1100-025-600	4		
22	Clamp Plates	N/A	2		
18	Screw (T-Brg) T-Torx Patched	1100-025-620	3	3	3
-	Actuator Clip	1100-025-395	1	1	1

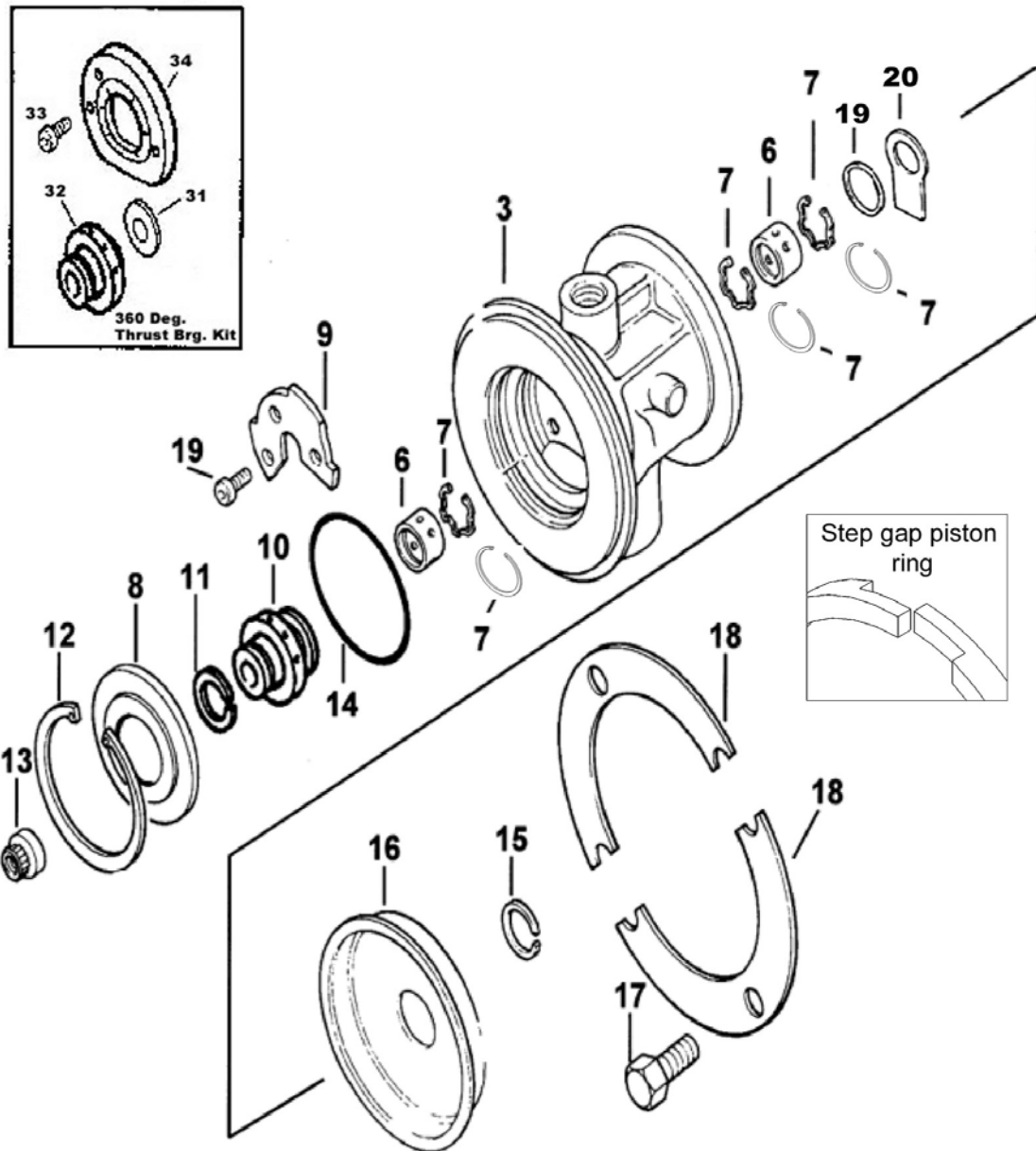
Oversize Repair Parts Available

Journal Bearings			
Oversize's Available		Part Number (Narrow Brg)	Part Number (Wide Bearing)
OD +.005"	ID -.005"	1100-020-110	1100-025-110
OD +.005"	ID Std	1100-020-114	1100-025-114
OD Std	ID -.005"	1100-020-117	1100-025-117
OD +.010"	ID -.010"	1100-020-120	1100-025-120
OD +.010"	ID Std	1100-020-124	1100-025-124
OD Std	ID -.010"	1100-020-127	1100-025-127
OD +.010"	ID -.005"	1100-020-131	1100-025-131
OD +.015"	ID Std	1100-020-135	N/A

Piston Rings		
Oversize's Available		Part Number
Turbine End		
OD +.010	Wth Std	1100-025-180
OD Std	Wth +.010	1100-025-181
OD +.010	Wth +.010	1100-025-182
OD Std	Wth +.020	1100-025-183
OD +.010	Wth +.020	1100-025-184

T2 / T25 Type Upgrade Parts (Dynamic Seal)

Performance & Upgrade Parts



T2 / T25 Type Upgrade Parts (Dynamic Seal)

Performance Parts & Upgrade Kits

As well as supplying the basic 360 degree kit, Melett also offers the following upgrade kits which offer excellent value for money in comparison to buying the individual piece parts.

Key	Part Description	Melett Part Number	Qty Per Turbo	Upgrade Kit 360° Thrust 1100-025-751	Upgrade Kit (Narrow brg) 1100-020-757	Upgrade Kit (Wide brg) 1100-025-757
6	Bearing (Short) Std. (7.67mm)	1100-020-100	2		2	
6	Bearing (Long) Std (9.37mm)	1100-025-100	2			2
7	Circlip (J-Brg - Castellated)	1100-025-140	3		3	3
7	Circlip (J-Brg GT20)	1102-020-140	3		3	3
8	Seal Plate	1100-025-300	1		1	1
11	Piston Ring (Comp)	1100-025-170	1		1	1
13	Shaftnut	1100-025-350	1		1	1
14	"O" Ring (Seal plate)	1100-025-150	1		1	1
15	Piston Ring – Performance Step Gap	1100-025-162			1	1
31	Thrust Washer 360deg	<i>(see notes below)</i>		1	1	1
32	Thrust Collar 360deg			1	1	1
33	Screw 360deg			3	3	3
34	Thrust Bearing 360deg			1	1	1

Notes

1. The 360 degree thrust kit is only sold as the 4 part kit (thrust bearing, collar, spacer and screws). All parts must be used together to give optimal performance.
2. 360 degree kit replaces standard thrust bearing and collar
3. 360 degree thrust bearing can be secured by drilling and tapping into bearing housing. Care should be taken when drilling into water cooled bearing housing to ensure water cavity is not broken into.

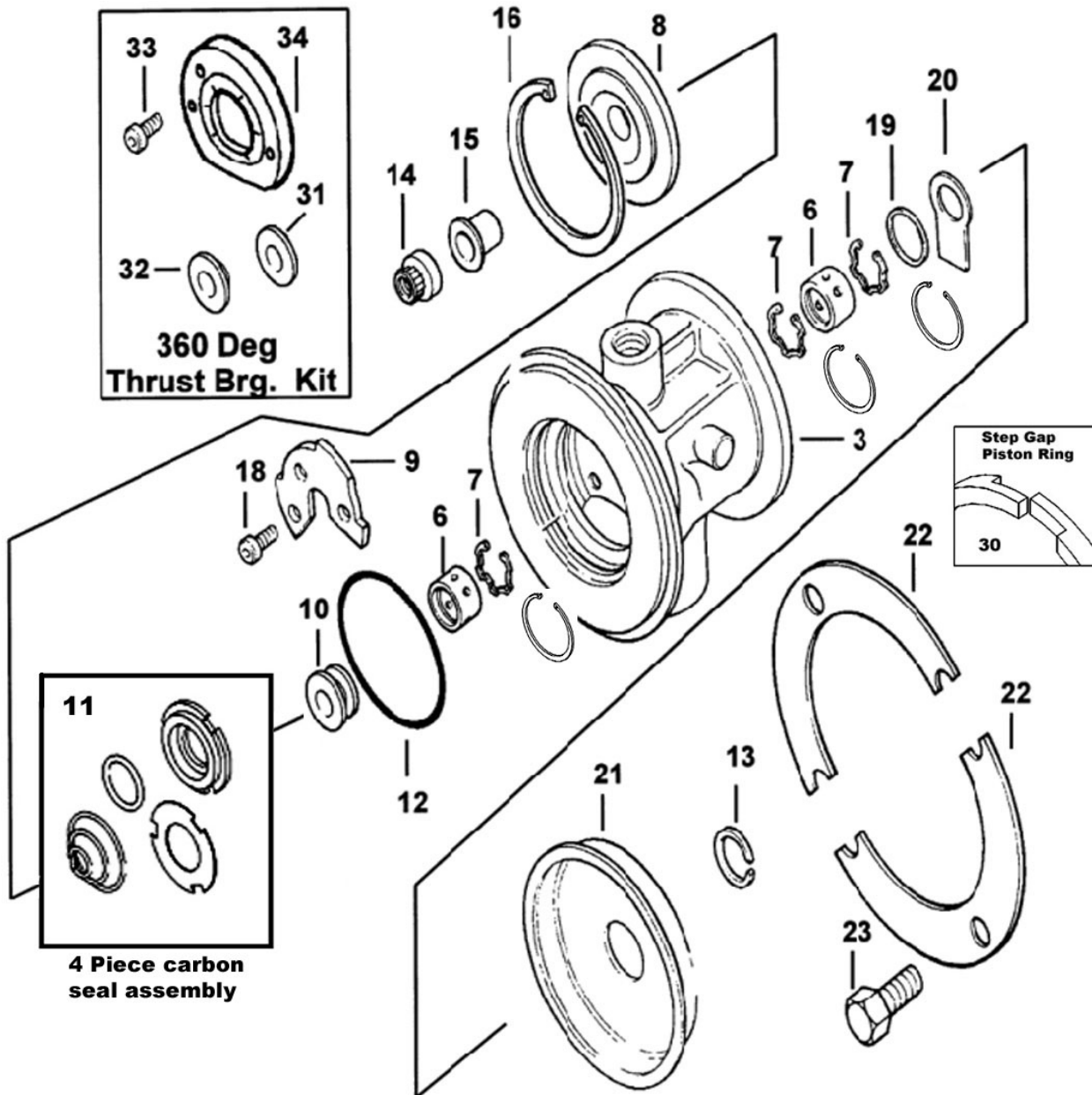
Oversize Repair Parts Available

For oversize bearings and standard piston rings, see T2 standard section. Melett also now offer oversize Step gap piston rings for T2 turbine end as follows...

Performance Step Gap Piston Rings		
Oversize's Available		Part Number
Step Gap O/sizes		Part No.
OD Std	Wth +.010	1100-025-163

T2 / T25 Type Upgrade Parts (Carbon Seal)

Performance & Upgrade Parts



T2 / T25 Type Upgrade Parts (Carbon Seal)

Performance Parts & Upgrade Kits

All parts are available for purchase as individual components or in the following popular Repair Kits

Key	Part Description	Melett Part Number	Qty Per Turbo	Upgrade Kit 360° Thrust 1100-025-752	Major Kit (Narrow brg) 1100-020-756	Major Kit (Wide brg) 1100-025-756
6	Bearing (Short) Std. (7.67mm)	1100-020-100	2		2	
6	Bearing (Long) Std (9.37mm)	1100-025-100	2			2
7	Circlip (J-Brg - Castellated)	1100-025-140	3		3	3
7	Circlip (J-Brg GT20)	1102-020-140	3		3	3
11	Carbon Seal Kit (4 piece)	1100-025-270	1		1	1
14	Shaft nut	1100-025-350	1		1	1
12	"O" Ring (Seal plate)	1100-025-150	1		1	1
30	Piston Ring – Performance Step Gap	1100-025-162			1	1
31	Thrust Washer 360deg	(see notes below)	1	1	1	1
32	Thrust Collar 360deg		1	1	1	1
33	Screw 360deg		3	3	3	3
34	Thrust Bearing 360deg		1	1	1	1

Notes

1. The 360 degree thrust kit is only sold as the 4 part kit (thrust bearing, collar, spacer and screws). All parts must be used together to give optimal performance.
2. 360 degree kit replaces standard thrust bearing and collar
3. 360 degree thrust bearing can be secured by drilling and tapping into bearing housing. Care should be taken when drilling into water cooled bearing housing to ensure water cavity is not broken into.

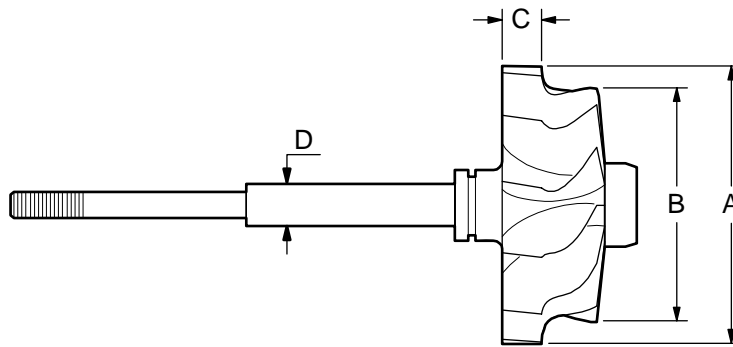
Journal Bearings			
Oversize's Available		Part Number (Narrow Brg)	Part Number (Wide Bearing)
OD +.005"	ID -.005"	1100-020-110	1100-025-110
OD +.005"	ID Std	1100-020-114	1100-025-114
OD Std	ID -.005"	1100-020-117	1100-025-117
OD +.010"	ID -.010"	1100-020-120	1100-025-120
OD +.010"	ID Std	1100-020-124	1100-025-124
OD Std	ID -.010"	1100-020-127	1100-025-127
OD +.010"	ID -.005"	1100-020-131	1100-025-131
OD +.015"	ID Std	1100-020-135	N/A

Piston Rings		
Oversize's Available		Part Number
Turbine End (Std)		
OD +.010	Wth Std	1100-025-180
OD Std	Wth +.010	1100-025-181
OD +.010	Wth +.010	1100-025-182
OD Std	Wth +.020	1100-025-183
OD +.010	Wth +.020	1100-025-184
Step Gap O/sizes		
OD Std	Wth +.010	1100-025-163

T2/25/28 Type

Major Replacement Parts - Detail

Shaft & Wheel



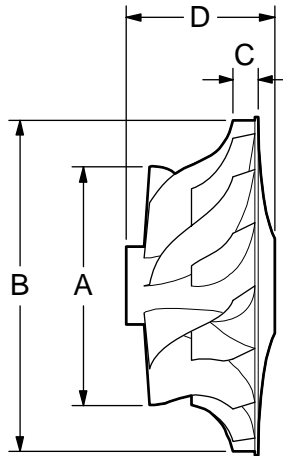
Melett Part No.	To replace Garrett..	(A) Inducer ø mm's	(B) Exducer ø mm's	(C) Tip width mm's	(D) Shaft OD mm's
1100-020-435	435737-0006 (& others – see cross ref)	47.0	35.6	7.3	9.2
1100-025-436	435922-0001 (& others – see cross ref)	52.8	41.9	6.3	9.2

More Shaft and wheels are currently in development with many popular parts due into stock through 2008. Please contact Melett Sales for an up to date list of what's available

T2/25/28 Type

Major Replacement Parts - Detail

Compressor Wheels



Melett Part No.	To replace Garrett...	Trim	(A) Inducer ø mm's	(B) Exducer ø mm's	(C) Tip width mm's	(D) Total Hub Length	No. of Blades
1100-025-400	446335-0009		38.3	54.0	5.8	24.5	5/5
1100-028-400	445436-0011	TB2810	42.5	60.1	5.3	24.5	6/6

More compressor wheels are currently in development with many popular parts due into stock through 2008. Please contact Melett Sales for an up to date list of what's available.

Bearing Housings

Bearing Housings are currently in development with many popular parts due into stock through 2008. Please contact Melett Sales for an up to date list of what's available

T2/25/28 Type

Replacement Turbine Housings

Manufactured from high quality material with excellent crack resistant properties

Vehicle Make	Vehicle Model	Year	Fuel	Model	To fit turbo...	OE Hsg No.	A/R	Melett Part No.
Chrysler	Cherokee TD	84 --->	D	TB0216	466452-1	430609-59	0.47	1100-020-824
Citroen	Evasion 1.9L	95 to 00	D	TB0280	454086-1	430609-174	0.41	1100-020-828
Citroen	Xantia 1.9L		D	TB0265	454131-2/3	430609-176	0.41	1100-020-828
Citroen	ZX 1.9L	92 to 96	D	TB0265	454027-1/2	430609-175	0.41	1100-020-828
Citroen	XM 2.0L	93 to 95	P	TB2567	465439-2	435493-2	0.64	1100-025-821
Citroen	XM 2.0L	95 to 00	P	TB2572	454162-1	435493-2	0.64	1100-025-821
Fiat / Lancia	Delta HF	86	P	TB0225	466728-1/2	430609-98	0.63	1100-020-823
Ford	Fiesta	89 to 91	P	TB0250	465187-1/2	413800-1	0.47	1100-020-821
Land Rover	Land Rover 2.5L	---> 86	D	TB0226	466842-2	430609-0155	0.47	1100-020-820
Nissan	Cherry		P	TB0208	466250-1/2	430609-40	0.47	1100-020-820
Nissan	ZX	84	P	TB0208	466250-1/2	430609-40	0.47	1100-020-820
Nissan	Bluebird/Sylvia	84 --->	P	TB0210	466370-2 to 29	430609-56	0.63	1100-020-823
Nissan	200 SX		P	TB2525	465795-1/2/4	430609-113	0.64	1100-020-825
Nissan	Patrol GR 2.8L	90 --->	D	TB2533	452022-1	430609-132	0.48	1100-025-820
Nissan	Patrol GR 2.8L	90 --->	D	TB2527	465941-1/2/4	430609-99	0.48	1100-025-820
Peugeot	306 1.9L	93 -->	D	TB0280	454086-1	430609-174	0.41	1100-020-828
Peugeot	406 1.9L	93 to 96	D	TB0264	465575-1/2	430609-174	0.41	1100-020-828
Peugeot	406 1.9L	96 to 98	D	TB0289	454131-2/3	430609-174	0.41	1100-020-828
Peugeot	605 1.9L	95 --->	D	TB0280	454085-1	430609-174	0.41	1100-020-828
Peugeot	605 2.0L	93 to 99	P	TB2587	465439-2	435493-2	0.64	1100-025-821
Renault	R9 & 11 Turbo 1.4L	86 --->	P	TB0203	466196-3	430609-63/30	0.35	1100-020-822
Renault	Super 5 GT Turbo	87 --->	P	TB0235	465367-1/2	430609-63/94	0.35	1100-020-822
Renault	Super 5 GT Turbo		P	TB0214	466506-3/5/7	430609-94	0.35	1100-020-822
Renault	Espace 2.1L	85 --->	D	TB0213	466450-1	430609-59	0.47	1100-020-824
Renault	Espace 2.1L	93 --->	D	TB0270	454067-1	430609-59	0.47	1100-020-824
Renault	R21 TD 2.1L	86 to 92	D	TB0213	466450-1	430609-59	0.47	1100-020-824
Renault	R25 TD 2.1L	86 --->	D	TB0213	466450-1	430609-59	0.47	1100-020-824
Renault	R9 & 11 Turbo 1.4L	83 to 87	P	TB0203	466196-1	430609-30	0.35	1100-020-891
Renault	Super 5 GT Turbo	86 --->	P	TB0203	466506-1/2	430609-30	0.35	1100-020-891
Rover	Montego	---> 88	D	TB0223	466770-3	430609-55	0.35	1100-020-891
Rover	Montego	89 to 92	D	TB0223	466770-5	430609-55	0.35	1100-020-891
Rover	820/220/420	92 --->	P	TB2555	465199-3	434129-5	0.49	1100-025-822

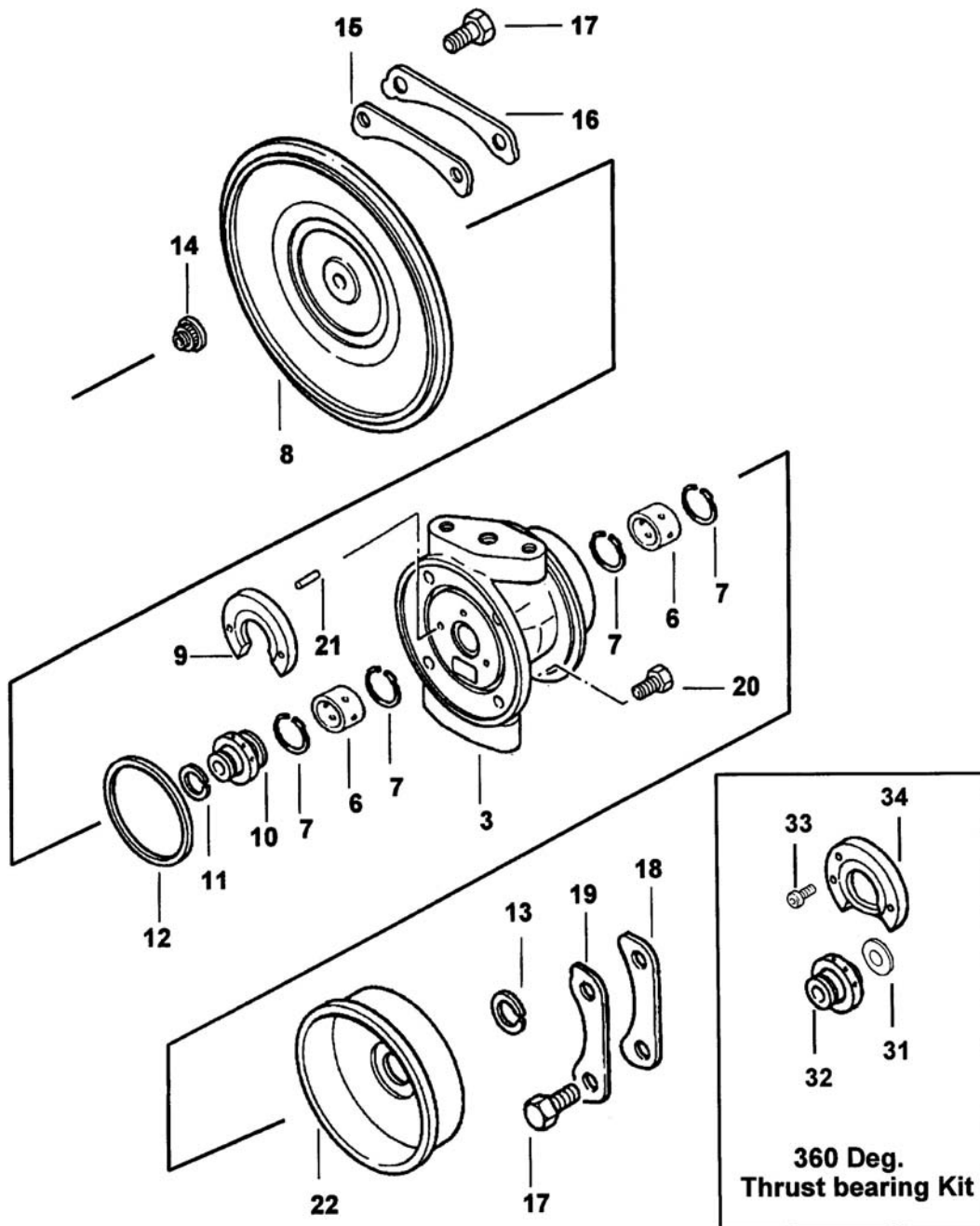
Garrett T3 Type Turbos

Dynamic & Carbon Seal Standard and Upgrade Parts

Common Service Parts
Upgrade Service Parts
Oversize Service Parts
Shaft and Wheels
Compressor Wheels
Turbine Housings

T3 Type (Dynamic Seal)

Common Service Parts



This illustration is a guide and does not necessarily show all parts accurately

T3 Type (Dynamic Seal)

Repair Parts & Service Kits

All parts are available for purchase as individual components or in the following popular Repair Kits

Key	Part Description	MELETT Part Number	Qty per Turbo	Repair Kit 1100-030-750	Repair Kit 1100-030-760
6	Bearing, OD / ID Std	1100-040-100	2	2	2
7	Snap Ring	1100-040-140	4	4	4
	Seal Plate Assembly	N/A	1		
9	Thrust Bearing (Steel)	1100-040-320	1	1	1
9	Thrust bearing (Bronze)	1100-040-321	1		
10	Thrust Collar	1100-040-203	1		1
11	Piston Ring (Comp. End)	1100-040-170	1	1	1
12	"O" Ring, Seal Plate	1100-040-150	1	1	1
13	Piston Ring (Turb End)	1100-040-160	1	1	1
14	Shaft nut (LHT)	1100-030-351	1	1	1
15	Clamp Plate C/Hsg to S/Plate	N/A	3		
16	Lock Plate C/Hsg to S/Plate	N/A	3		
17	Bolt C/Hsg + T/Hsg	1301-027-600	12		
18	Clamp Plate T/Hsg	1100-040-480	3		
19	Lock Plate T/Hsg	1100-040-520	3		
20	Bolt (Seal Plate) Patched	1100-030-561	4	4	4
	Gasket (Seal Plate to Comp Cover)	1100-030-790	1	1	1

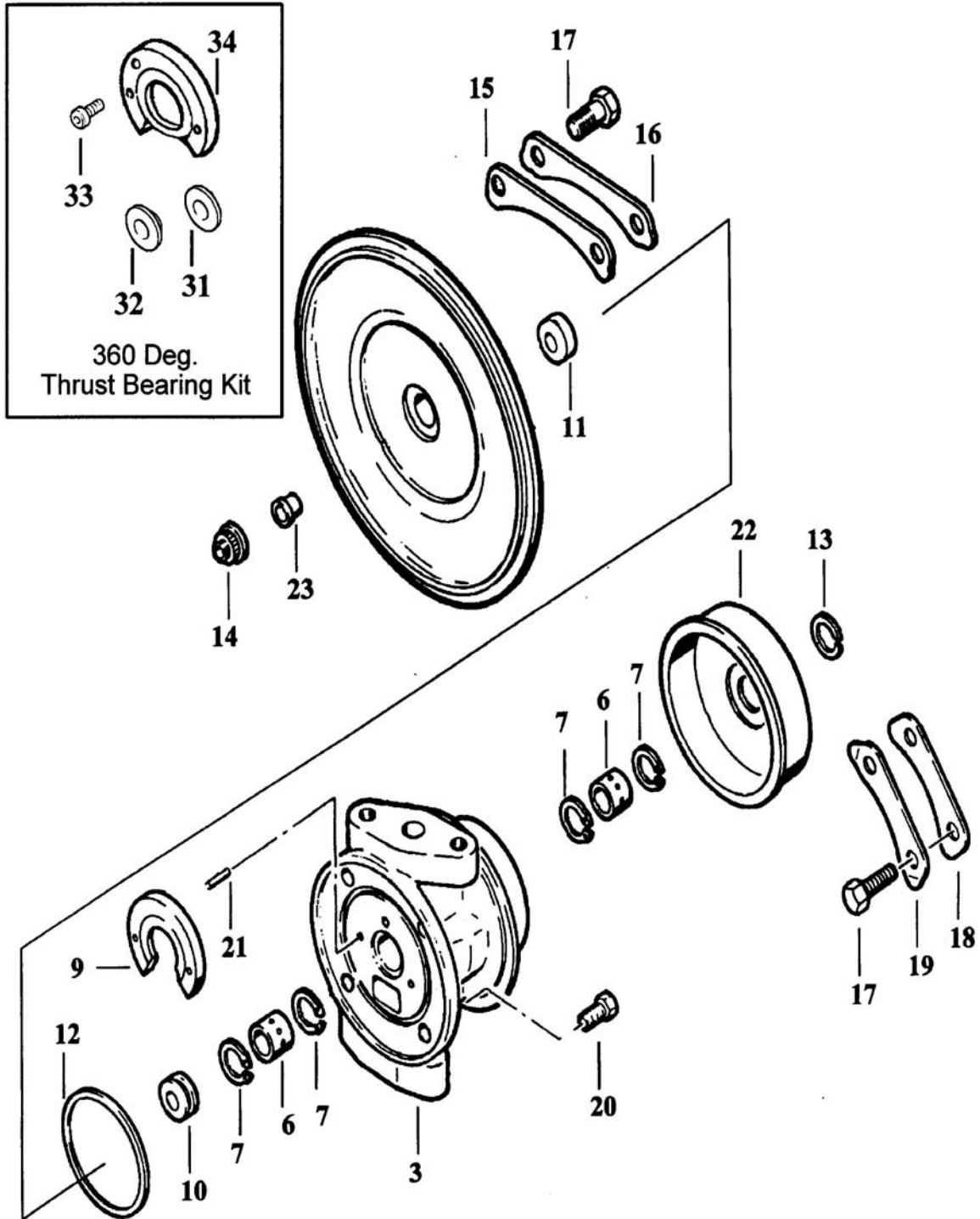
Oversize Repair Parts Available

Journal Bearings		
OE part Number 410775-0001		
Oversize's Available		Part Number
OD +.005"	ID -.005"	1100-040-110
OD +.005"	ID Std	1100-040-114
OD Std	ID -.005"	1100-040-117
OD +.010"	ID -.010"	1100-040-120
OD +.010"	ID Std	1100-040-124
OD Std	ID -.010"	1100-040-127
OD +.005"	ID -.010"	1100-040-130
OD +.010"	ID -.005"	1100-040-131

Piston Rings – Turbine End			Piston Rings – Compressor End		
OE part Number 408049-0009			OE part Number 403818-0009		
Oversize's Available		Part Number	Oversize's Available		Part Number
OD +.010"	Wth Std	1100-040-180	OD +.010"	Wth Std	1100-040-181
OD +.010"	Wth +0.010"	1100-040-184			
OD +.010"	Wth +0.020"	1100-040-182			
OD Std	Wth +0.010"	1100-040-185			
OD Std	Wth +0.020"	1100-040-183			

T3 Type (Carbon Seal)

Common Service Parts



T3 Type (Carbon Seal)

Repair Parts & Service Kits

All parts are available for purchase as individual components or in the following popular Repair Kit

Key	Part Description	MELETT Part Number	Qty per Turbo	Repair Kit 1100-030-752	Repair Kit 1100-030-762
6	Bearing, OD / ID Std	1100-040-100	2	2	2
7	Snap Ring	1100-040-140	4	4	4
	Seal Plate Assembly	N/A	1		
9	Thrust Bearing (Steel)	1100-040-320	1	1	1
9	Thrust bearing (Bronze)	1100-040-321	1		
10	Thrust Collar	1100-040-202	1		1
11	Carbon Seal Assembly	1100-030-270	1	1	1
12	"O" Ring, Seal Plate	1100-040-150	1	1	1
13	Piston Ring, 0.710" (T) Step Bore	1100-040-160	1	1	1
14	Shaft nut (LHT)	1100-030-351	1	1	1
15	Clamp Plate C/Hsg to S/Plate	N/A	3		
16	Lock Plate C/Hsg to S/Plate	N/A	3		
17	Bolt C/Hsg + T/Hsg	1301-027-600	12		
18	Clamp Plate T/Hsg	1100-040-480	3		
19	Lock Plate T/Hsg	1100-040-520	3		
20	Bolt, 6mm x 15.5mm Micro Encapsulated	1100-030-561	4	4	4
21	Pin T/Brg Locating	N/A	2		
22	Heat Shroud, Stamped	N/A	1		
	Gasket (Seal Plate to Comp Cover)	1100-030-790	1	1	1

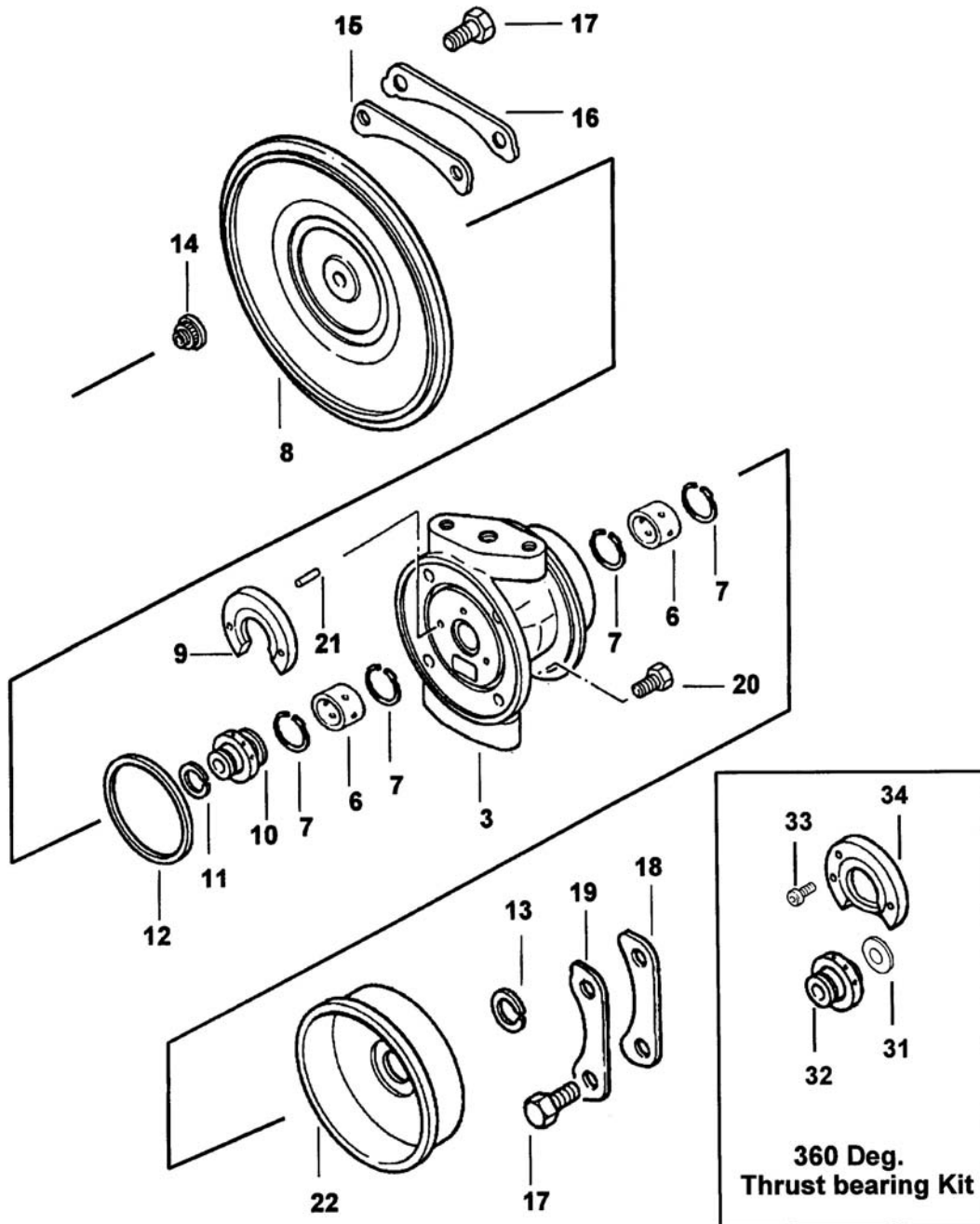
Oversize Repair Parts Available

Journal Bearings		
OE part Number 410775-0001		
Oversize's Available		Part Number
OD +.005"	ID -.005"	1100-040-110
OD +.005"	ID Std	1100-040-114
OD Std	ID -.005"	1100-040-117
OD +.010"	ID -.010"	1100-040-120
OD +.010"	ID Std	1100-040-124
OD Std	ID -.010"	1100-040-127
OD +.005"	ID -.010"	1100-040-130
OD +.010"	ID -.005"	1100-040-131

Piston Rings – Turbine End			Piston Rings – Compressor End		
OE part Number 408049-0009			OE part Number 403818-0009		
Oversize's Available		Part Number	Oversize's Available		Part Number
OD +.010"	Wth Std	1100-040-180	OD +.010"	Wth Std	1100-040-181
OD +.010"	Wth +0.010"	1100-040-184			
OD +.010"	Wth +0.020"	1100-040-182			
OD Std	Wth +0.010"	1100-040-185			
OD Std	Wth +0.020"	1100-040-183			

T3 Type Upgrade Parts (Dynamic Seal)

Upgrade Parts Available



This illustration is a guide and does not necessarily show all parts accurately

T3 Type Upgrade Parts (Dynamic Seal)

Performance Parts & Upgrade Kits

As well as supplying the basic 360 degree kit, Melett also offers the following upgrade kits which offer excellent value for money in comparison to buying the individual piece parts.

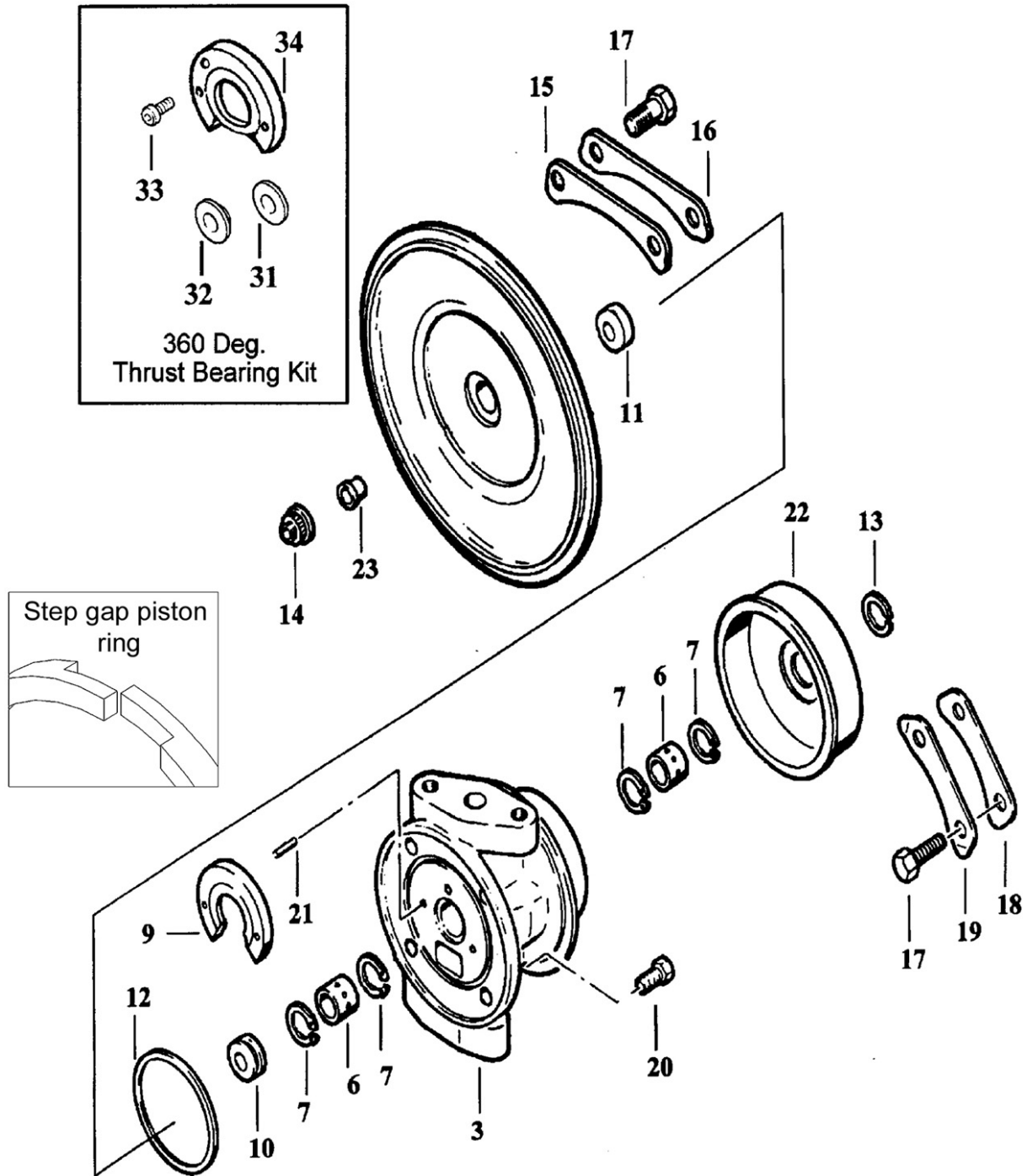
Key	Part Description	MELETT Part Number	Qty Per Turbo	Upgrade Kit 1100-040-751	Upgrade Kit 1100-030-751	Upgrade Kit 1100-030-755
6	Bearing, OD / ID Std	1100-040-100	2		2	2
7	Snap Ring	1100-040-140	4		4	4
11	Piston Ring (Comp. End)	1100-040-170	1		1	1
12	"O" Ring, Seal Plate	1100-040-150	1		1	1
13	Piston Ring, 0.710" (T) Step Bore	1100-040-160	1		1	
14	Shaft nut (LHT)	1100-030-351	1		1	1
20	Bolt, 6mm x 15.5mm Micro Encapsulated	1100-030-561	4		4	4
	Gasket (Seal plate to Comp. Cover)	1100-030-790	1		1	1
	Piston Ring – Performance Step Gap	1100-040-162	1			1
31	Thrust Washer 360deg	<i>(see notes below)</i>	1	1	1	1
32	Thrust Collar 360deg		1	1	1	1
33	Screw 360deg		3	3	3	3
34	Thrust Brg 360deg		1	1	1	1

Notes

1. The 360 degree thrust kit is only sold as the 4 part kit (thrust bearing, collar, spacer and screws). All parts must be used together to give optimal performance.
2. 360 degree kit replaces standard thrust bearing and collar
3. 360 degree thrust bearing can be secured by drilling and tapping into bearing housing. Care should be taken when drilling into water cooled bearing housing to ensure water cavity is not broken into.

T3 Type Upgrade Parts (Carbon Seal)

Upgrade Parts Available



T3 Type Upgrade Parts (Carbon Seal)

Performance Parts & Upgrade Kits

All parts are available for purchase as individual components or in the following popular Repair Kits

Key	Part Description	MELETT Part Number	Qty Per Turbo	Upgrade Kit 1100-040-752	Upgrade Kit 1100-030-753	Upgrade Kit 1100-030-756
6	Bearing, OD / ID Std	1100-040-100	2		2	2
7	Snap Ring	1100-040-140	4		4	4
	Seal Plate Assembly	N/A	1			
9	Thrust Bearing	1100-040-320	1			
10	Thrust Collar	1100-040-202	1			
11	Carbon Seal Assembly	1100-030-270	1		1	1
12	"O" Ring, Seal Plate	1100-040-150	1		1	1
13	Piston Ring, 0.710" (T) Step Bore	1100-040-160	1		1	
14	Shaft nut (LHT)	1100-030-351	1		1	1
15	Clamp Plate C/Hsg to S/Plate	N/A	3			
16	Lock Plate C/Hsg to S/Plate	N/A	3			
17	Bolt C/Hsg + T/Hsg	1301-027-600	12			
18	Clamp Plate T/Hsg	N/A	3			
19	Lock Plate T/Hsg	N/A	3			
20	Bolt, 6mm x 15.5mm Micro Encapsulated	1100-030-561	4		4	4
21	Pin T/Brg Locating	N/A	2			
22	Heat Shroud, Stamped	N/A	1			
	Gasket (Seal plate to Comp. Cover)	1100-030-790	1		1	1
	Piston Ring – Performance Step Gap	1100-040-162	1			1
31	Thrust Washer 360deg	<i>(see notes below)</i>	1	1	1	1
32	Thrust Collar 360deg		1	1	1	1
33	Screw 360deg		3	3	3	3
34	Thrust Brg 360deg		1	1	1	1

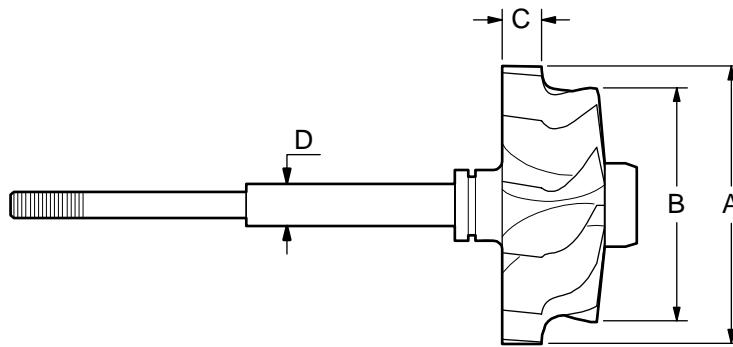
Notes

1. The 360 degree thrust kit is only sold as the 4-part kit (thrust bearing, collar, spacer and screws). All parts must be used together to give optimal performance.
2. 360 degree kit replaces standard thrust bearing and collar
3. The 360 degree thrust bearing can be secured by drilling and tapping into the bearing housing. Care should be taken when drilling into a water-cooled bearing housing to ensure water cavity is not broken into.

T3 Type

Major Replacement Parts - Detail

Shaft & Wheel



Melett Part No.	To replace Garrett..	(A) Inducer ø mm's	(B) Exducer ø mm's	(C) Tip width mm's	(D) Shaft OD mm's
1100-030-435	451311-0014	58.9	48.7	11.5	10.2
1100-030-436	451310-0003	65.5	49.3	10.3	10.2
1100-030-437	451314-0002	65.5	54.0	9.5	10.2

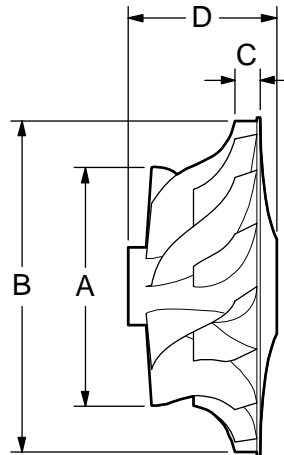
Melett's fully qualified Engineers are available to answer any technical enquiry regarding limits, tolerances, and turbo set-up configurations. Email: Engineer@melett.com

More Shaft and Wheels are currently in development with many popular parts due into stock through 2008. Please contact Melett Sales for an up to date list of what's available.

T3 Type

Major Replacement Parts - Detail

Compressor Wheels



Melett Part No.	To replace Garrett...	Trim	(A) Inducer ø mm's	(B) Exducer ø mm's	(C) Tip width mm's	(D) Total Hub Length	No. of Blades
1100-030-400	409096-0013	T3 / 60	46.5	60.1	6.3	32.0	12
1100-030-402	409096-0014	T3 / 50	42.5	60.1	5.3	32.0	12
1100-030-403	409096-0011	T3 / 40	37.7	60.1	4.6	32.0	12
1100-030-401	409096-0001/8	T3 / 45	40.5	60.1	5.1	32.0	12
1100-030-404	409096-0009	T3 / 55	44.6	60.1	6.3	32.0	12

More compressor wheels are currently in development with many popular parts due into stock through 2008. Please contact Melett Sales for an up to date list of what's available.

Bearing Housings

Bearing Housings are currently in development with many popular parts due into stock through 2008. Please contact Melett Sales for an up to date list of what's available

T3 Type

Replacement Turbine Housings

Manufactured from high quality material with excellent crack resistant properties

Vehicle Make	Vehicle Model	Year	Fuel	Model	To fit turbo...	OE Hsg No.	A/R	Melett Part No.
Nissan	Patrol GR 3.3L		D	HT15B	Garrett Replacement CHRA			1100-030-823
Ford	Sierra RS Cos. 4x4	90 to 93	P	TB0384	465189-2/3	413746-1/3	0.48	1100-030-829
Ford	Escort III RS 1.6L	84 to 86	P	TB0345	466644-1	430394-11	0.36	1100-030-830
Ford	Escort IV RS 1.6L	86 to 91	P	TB0355	466644-1	430394-11	0.36	1100-030-830
Alfa Romeo	164 2.0L	87 --->	P	TB0338	466384-7	430394-12	0.48	1100-030-820
Fiat / Lancia	Croma	91	P	TB0338	466384-9	430394-12	0.48	1100-030-820
Fiat / Lancia	Croma IE	85	P	TB0338	466384-3	430394-12	0.48	1100-030-820
Fiat / Lancia	Croma IE	88	P	TB0338	466384-8	430394-12	0.48	1100-030-820
Fiat / Lancia	Croma/Théma IE	86	P	TB0338	466384-4	430394-12	0.48	1100-030-820
Fiat / Lancia	Delta 4WD	86	P	TB0338	466384-2	430394-12	0.48	1100-030-820
Fiat / Lancia	Théma	84 to 86	P	TB0338	466384-1	430394-12	0.48	1100-030-820
Saab	Saab 900	87 to 88	P	TB0357	466954-1/2	430394-12	0.48	1100-030-820
Saab	Saab 900	87	P	TB0358	466956-1	430394-12	0.48	1100-030-820
Saab	Saab 900	81 to 82	P	TB0312	465514-1 to 4	430394-12	0.48	1100-030-820
Saab	Saab 900	82 to 86	P	TB0321	465904-2/3	430394-12	0.48	1100-030-820
Saab	Saab 900	89 --->	P	TB0382	465163-1 to 4	430394-12	0.48	1100-030-820
Saab	Saab 900	83 to 87	P	TB0339	466420-1/2	430394-12	0.48	1100-030-820
Saab	Saab 9000	84 to 86	P	TB0343	466456-1/2	430394-12	0.48	1100-030-820
Saab	Saab 9000	86 to 89	P	TB0356	466952-1 to 5	430394-12	0.48	1100-030-820
Volvo	Volvo 700 2.3L	86 to 89	P	TB0363	466672-1 to 5	430641-1/2	0.48	1100-030-821
Volvo	Volvo 700 2.3L	83 to 85	P	TB0326	466032	430641-1/2	0.48	1100-030-821
Alfa Romeo	75 IE 1.8L	86 to 88	P	TB0353	466858-1	432223-11	0.48	1100-030-833
Alfa Romeo	155 2.0L	92 to 96	P	TB0367	465103-1	432224-1	0.48	1100-030-835
Ford	Sierra RS Cosworth	87 to 89	P	TB0361	466962-1	444027-1	0.48	1100-030-828
Renault	R21 Turbo 1.9L	86 to 92	P	TB0370	466948-1	444385-1	0.48	1100-030-834
Volvo	Volvo 700 2.3L	88 --->	P	TB0379	413582-1/2	465143-1/2/3	0.48	1100-030-821

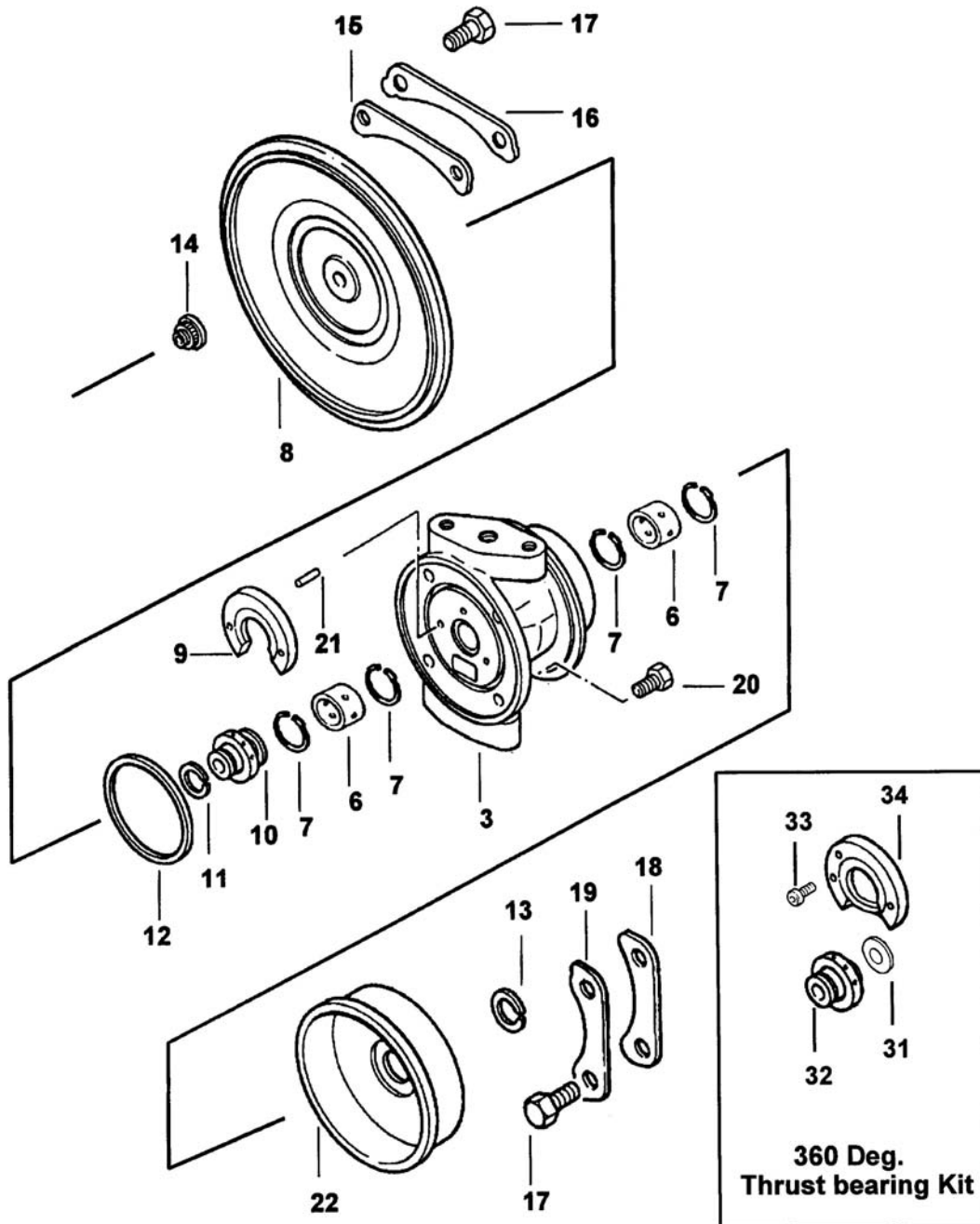
Garrett T04B/E Type Turbos

Dynamic & Carbon Seal Standard and Upgrade Parts

Common Service Parts
Upgrade Service Parts
Oversize Service Parts
Shaft and Wheels
Compressor Wheels
Turbine Housings

T04B/E Type (Dynamic Seal)

Common Service Parts



This illustration is a guide and does not necessarily show all parts accurately

T04B/E Type (Dynamic Seal)

Repair Parts & Service Kits

All parts are available for purchase as individual components or in the following popular Repair Kits

Key	Part Description	MELETT Part Number	Quantity Per Turbo	Repair Kit 1100-040-760	Repair Kit 1100-040-761	Repair Kit 1100-040-750
6	Bearing, OD / ID Std	1100-040-100	2	2	2	2
7	Snap Ring	1100-040-140	4	4	4	4
	Seal Plate Assembly	N/A	1			
9	Thrust Bearing	1100-040-320	1	1	1	1
10	Thrust Collar	1100-040-203	1		1	
11	Piston Ring (Comp. End)	1100-040-170	1	1	1	1
12	"O" Ring, Seal Plate	1100-040-150	1	1	1	1
13	Piston Ring, 0.710" (T) Step Bore	1100-040-160	1	1	1	1
14	Shaft nut (RHT)	1100-040-350	1	1	1	1
14	Shaft nut (LHT)	1100-030-351	1	1	1	1
15	Clamp Plate C/Hsg to S/Plate	1100-040-500	3			3
16	Lock Plate C/Hsg to S/Plate	1100-040-540	3			3
17	Bolt C/Hsg + T/Hsg	1100-040-560	12			12
18	Clamp Plate T/Hsg	1100-040-480	3			3
19	Lock Plate T/Hsg	1100-040-520	3			3
20	Bolt, 1/4" Micro Encapsulated	1100-040-561	4	4	4	4
22	Heat Shroud, Stamped	N/A	1			
				T04 Minor Kit	T04 Minor + Collar	Replaces 468100-0

Oversize Repair Parts Available

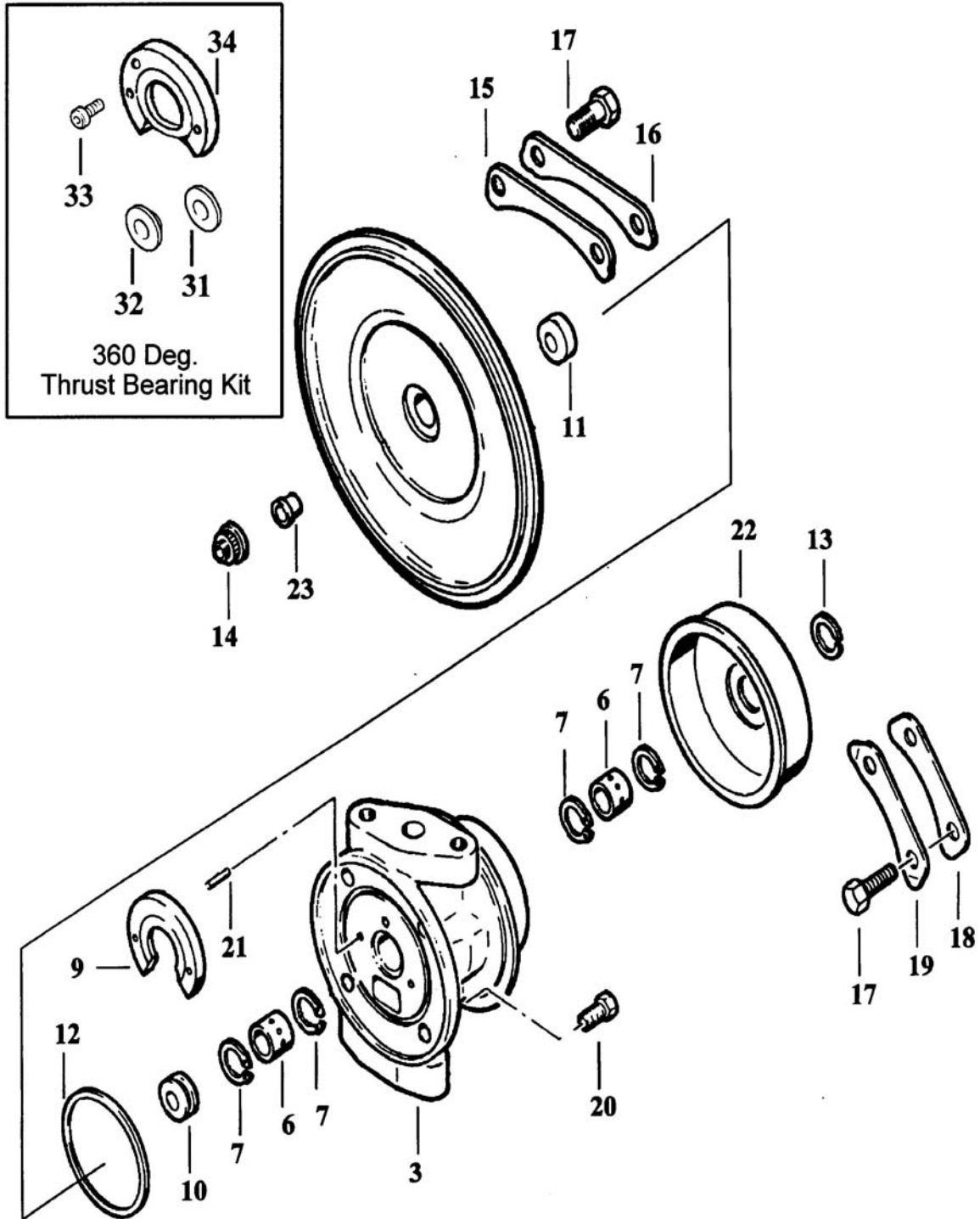
Journal Bearings		
OE part Number 410775-0001		
Oversize's Available		Part Number
OD +.005"	ID -.005"	1100-040-110
OD +.005"	ID Std	1100-040-114
OD Std	ID -.005"	1100-040-117
OD +.010"	ID -.010"	1100-040-120
OD +.010"	ID Std	1100-040-124
OD Std	ID -.010"	1100-040-127
OD +.005"	ID -.010"	1100-040-130
OD +.010"	ID -.005"	1100-040-131

Piston Rings – Turbine End			Piston Rings – Compressor End		
OE part Number 408049-0009			OE part Number 403818-0009		
Oversize's Available		Part Number	Oversize's Available		Part Number
OD +.010"	Wth Std	1100-040-180	OD +.010"	Wth Std	1100-040-181
OD +.010"	Wth +0.010"	1100-040-184			
OD +.010"	Wth +0.020"	1100-040-182			
OD Std	Wth +0.010"	1100-040-185			
OD Std	Wth +0.020"	1100-040-183			

For 360° Thrust kits and Step gap P/Rings, See Upgrade Section

T04B/E Type (Carbon Seal)

Common Service Parts



T04B/E Type (Carbon Seal)

Repair Parts & Service Kits

All parts are available for purchase as individual components or in the following popular Repair Kit

Key	Part Description	MELETT Part Number	Quantity Per Turbo	Repair Kit 1100-040-762	Repair Kit 1100-040-763	Repair Kit 1100-040-753
6	Bearing, OD / ID Std	1100-040-100	2	2	2	2
7	Snap Ring	1100-040-140	4	4	4	4
	Seal Plate Assembly	N/A	1			
9	Thrust Bearing	1100-040-320	1	1	1	1
10	Thrust Collar	1100-040-202	1		1	
11	Carbon Seal Assembly	1100-030-270	1	1	1	1
12	"O" Ring, Seal Plate	1100-040-150	1	1	1	1
13	Piston Ring, 0.710" (T) Step Bore	1100-040-160	1	1	1	1
14	Shaft nut (RHT)	1100-040-350	1	1	1	1
14	Shaft nut (LHT)	1100-030-351	1	1	1	1
15	Clamp Plate C/Hsg to S/Plate	1100-040-500	3			3
16	Lock Plate C/Hsg to S/Plate	1100-040-540	3			3
17	Bolt C/Hsg + T/Hsg	1100-040-560	12			12
18	Clamp Plate T/Hsg	1100-040-480	3			3
19	Lock Plate T/Hsg	1100-040-520	3			3
20	Bolt, ¼" Micro Encapsulated	1100-040-561	4	4	4	4
21	Pin T/Brg Locating	N/A	2			
22	Heat Shroud, Stamped	N/A	1			

Oversize Repair Parts Available

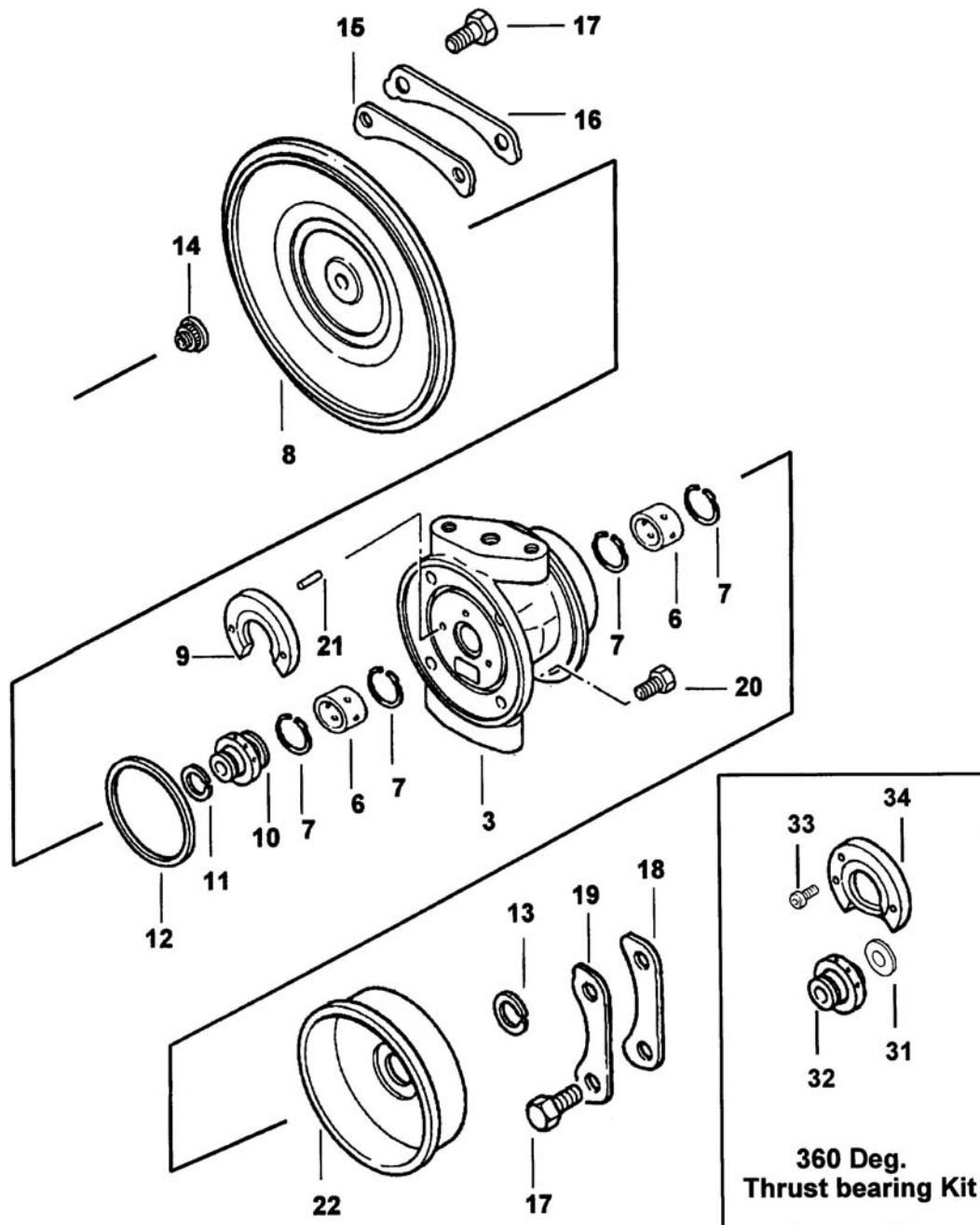
Journal Bearings		
OE part Number 410775-0001		
Oversize's Available		Part Number
OD +.005"	ID -.005"	1100-040-110
OD +.005"	ID Std	1100-040-114
OD Std	ID -.005"	1100-040-117
OD +.010"	ID -.010"	1100-040-120
OD +.010"	ID Std	1100-040-124
OD Std	ID -.010"	1100-040-127
OD +.005"	ID -.010"	1100-040-130
OD +.010"	ID -.005"	1100-040-131

Piston Rings – Turbine End			Piston Rings – Compressor End		
OE part Number 408049-0009			OE part Number 403818-0009		
Oversize's Available		Part Number	Oversize's Available		Part Number
OD +.010"	Wth Std	1100-040-180	OD +.010"	Wth Std	1100-040-181
OD +.010"	Wth +0.010"	1100-040-184			
OD +.010"	Wth +0.020"	1100-040-182			
OD Std	Wth +0.010"	1100-040-185			
OD Std	Wth +0.020"	1100-040-183			

For 360° Thrust kits and Step gap P/Rings, See Upgrade Section of catalogue

T04B/E Type Upgrade Parts (Dynamic Seal)

Upgrade Parts Available



This illustration is a guide and does not necessarily show all parts accurately

T04B/E Type Upgrade Parts (Dynamic Seal)

Performance Parts & Upgrade Kits

As well as supplying the basic 360 degree kit, Melett also offers the following upgrade kits which offer excellent value for money in comparison to buying the individual piece parts.

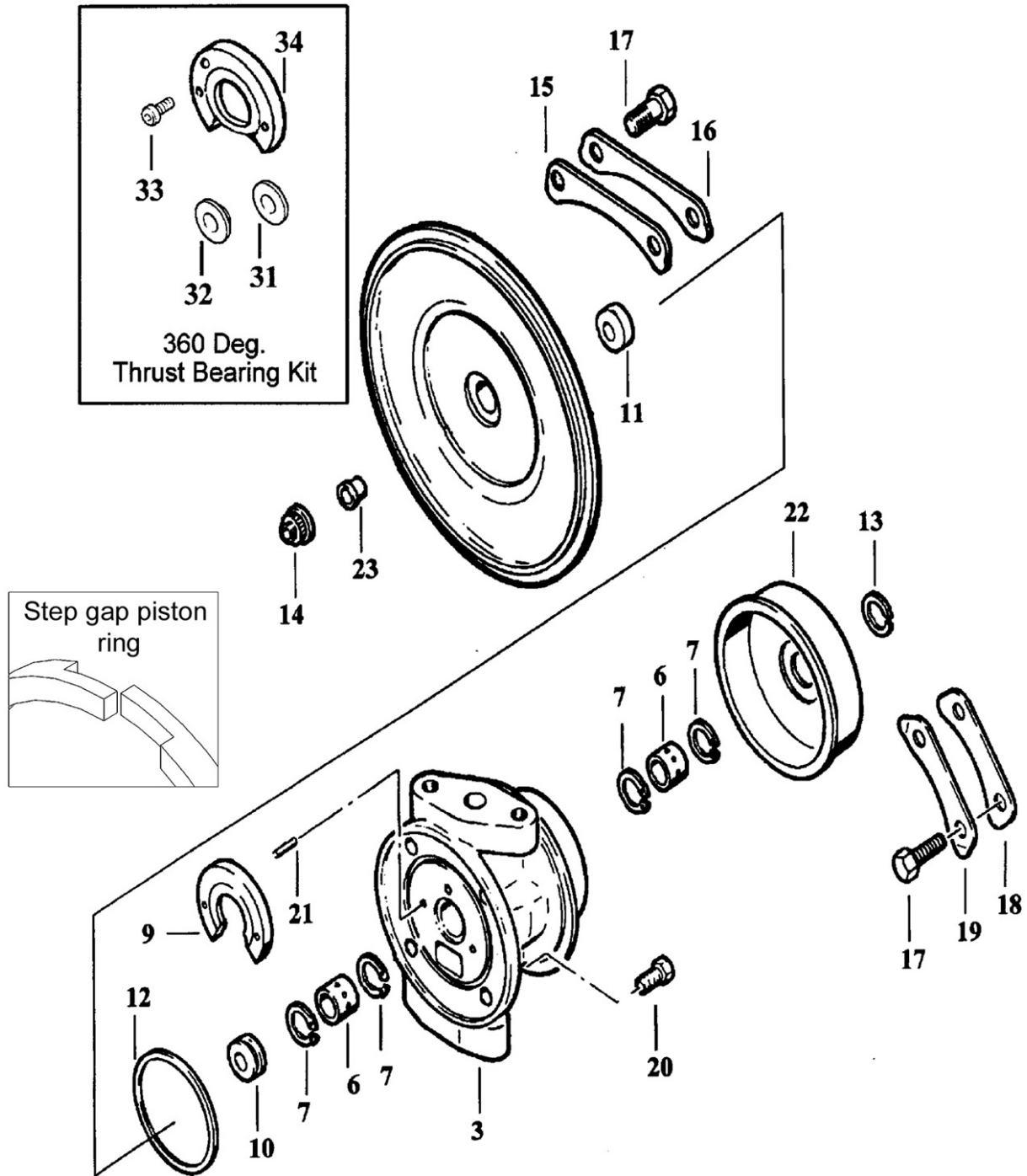
Key	Part Description	MELETT Part Number	Qty per Turbo	Upgrade Kit 1100-040-751	Upgrade Kit 1100-040-757	Upgrade Kit 1100-040-755
6	Bearing, OD / ID Std	1100-040-100	2		2	2
7	Snap Ring	1100-040-140	4		4	4
11	Piston Ring (Comp. End)	1100-040-170	1		1	1
12	"O" Ring, Seal Plate	1100-040-150	1		1	1
13	Piston Ring, 0.710" (T) Step Bore	1100-040-160	1		1	
14	Shaft nut (RHT)	1100-040-350	1		1	1
14	Shaft nut (LHT)	1100-030-351	1		1	1
20	Bolt, 1/4" Micro Encapsulated	1100-040-561	4		4	4
	Piston Ring – Performance Step Gap	1100-040-162	1			1
31	Thrust Washer 360deg	<i>(see notes below)</i>	1	1	1	1
32	Thrust Collar 360deg		1	1	1	1
33	Screw 360deg		3	3	3	3
34	Thrust Brg 360deg		1	1	1	1

Notes

1. The 360 degree thrust kit is only sold as the 4-part kit (thrust bearing, collar, spacer and screws). All parts must be used together to give optimal performance.
2. 360 degree kit replaces standard thrust bearing and collar
3. The 360 degree thrust bearing can be secured by drilling and tapping into the bearing housing. Care should be taken when drilling into a water-cooled bearing housing to ensure water cavity is not broken into.

T04B/E Type Upgrade Parts (Carbon Seal)

Upgrade Parts Available



T04B/E Type Upgrade Parts (Carbon Seal)

Performance Parts & Upgrade Kits

As well as supplying the basic 360 degree kit, Melett also offers the following upgrade kits which offer excellent value for money in comparison to buying the individual piece parts.

Key	Part Description	MELETT Part Number	Qty per Turbo	Upgrade Kit 1100-040-752	Upgrade Kit 1100-040-758	Upgrade Kit 1100-040-756
6	Bearing, OD / ID Std	1100-040-100	2		2	2
7	Snap Ring	1100-040-140	4		4	4
11	Carbon Seal Assembly	1100-030-270	1		1	1
12	"O" Ring, Seal Plate	1100-040-150	1		1	1
13	Piston Ring, 0.710" (T) Step Bore	1100-040-160	1		1	
14	Shaft nut (RHT)	1100-040-350	1		1	1
14	Shaft nut (LHT)	1100-030-351	1		1	1
20	Bolt, 1/4" Micro Encapsulated	1100-040-561	4		4	4
	Piston Ring – Performance Step Gap	1100-040-162	1			1
31	Thrust Washer 360deg	<i>(see notes below)</i>	1	1	1	1
32	Thrust Collar 360deg		1	1	1	1
33	Screw 360deg		3	3	3	3
34	Thrust Brg 360deg		1	1	1	1

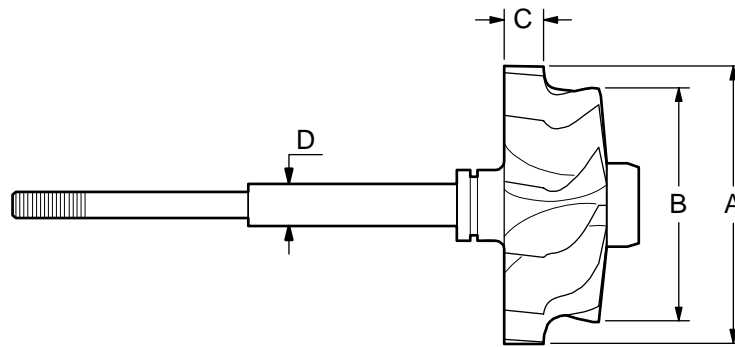
Notes

1. The 360 degree thrust kit is only sold as the 4 part kit (thrust bearing, collar, spacer and screws). All parts must be used together to give optimal performance.
2. 360 degree kit replaces standard thrust bearing and collar
3. 360 degree thrust bearing can be secured by drilling and tapping into bearing housing. Care should be taken when drilling into water-cooled bearing housing to ensure water cavity is not broken into.

T04B/E Type

Major Replacement Parts - Detail

Shaft & Wheel



Melett Part No.	To replace Garrett..	(A) Inducer Ø mm's	(B) Exducer Ø mm's	(C) Tip width mm's	(D) Shaft OD mm's
1100-040-435	446905-0001	74.2	58.3	9.5	10.2
1100-040-436	446905-0007	74.2	64.7	11.0	10.2
1100-040-437	446905-0004 (cutback)	74.2	58.3	9.5	10.2
1100-040-438	446905-0006	74.2	52.6	8.9	10.2

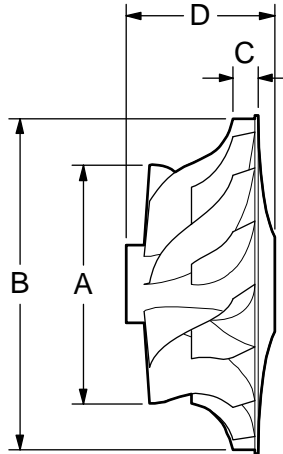
Melett's fully qualified Engineers are available to answer any technical enquiry regarding limits, tolerances, and turbo set-up configurations. Email: Engineer@melett.com

More Shaft and wheels are currently in development with many popular parts due into stock through 2008. Please contact Melett Sales for an up to date list of what's available.

T04B/E Type

Major Replacement Parts - Detail

Compressor Wheels



Melett Part No.	To replace Garrett...	Trim	(A) Inducer \varnothing mm's	(B) Exducer \varnothing mm's	(C) Tip width mm's	(D) Total Hub Length	No. of Blades
1100-040-400	409179-0018	S-Trim	48.3	69.9	6.9	32.0	8\8
1100-040-401	409179-0029		45.7	69.9	5.7	32.0	8\8

More compressor wheels are currently in development with many popular parts due into stock through 2008. Please contact Melett Sales for an up to date list of what's available.

Bearing Housings

Bearing Housings are currently in development with many popular parts due into stock through 2008. Please contact Melett Sales for an up to date list of what's available

T04B/E Type

Major Replacement Parts - Detail

Turbine Housings

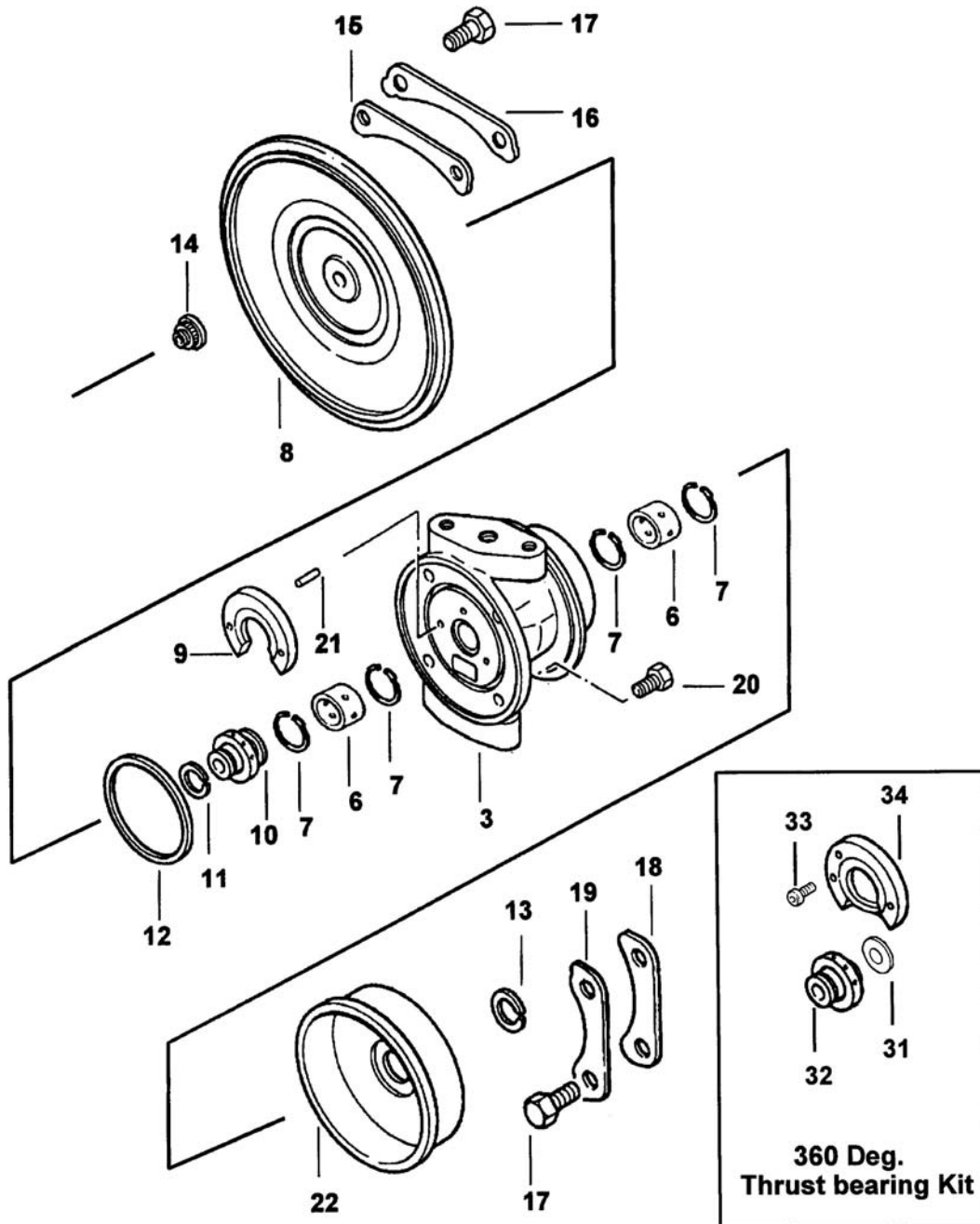
Melett Number	To replace OE No.	To replace CAT Number	Description
1100-040-820	408667-0021	1P1110 / 6N0565	Turbine Housing, T04B91 A/R1.75 (Twin Flow)
1100-040-821	408667-0022	7N1687	Turbine Housing, T04B91 A/R1.52 (Twin Flow)
1100-040-822	408667-0023	8N4782	Turbine Housing, T04B91 A/R1.32 (Twin Flow)

Garrett T04S Type Turbos

Common Service Parts
Upgrade Parts

T04S Type

Upgrade Parts Available



This illustration is a guide and does not necessarily show all parts accurately

T04S Type

Performance Parts & Upgrade Kits

As well as supplying the basic 360 degree kit, Melett also offers the following upgrade kits which offer excellent value for money in comparison to buying the individual piece parts.

Key	Part Description	MELETT Part Number	Qty per Turbo	Upgrade Kit 1100-041-751	Upgrade Kit 1100-041-750	Upgrade Kit 1100-041-752
6	Bearing, OD / ID Std	1100-041-100	2		2	2
7	Retaining Ring	1100-041-140	4		4	4
11	Piston Ring (Comp. End)	1100-041-170	1		1	1
12	"O" Ring, Seal Plate	1100-040-150	1		1	1
13	Piston Ring, 0.710" (T) Step Bore	1100-040-160	1		1	
14	Shaft nut (RHT)	1100-120-350	1		1	1
20	Bolt, 1/4" Micro Encapsulated	1100-040-561	4		4	4
	Piston Ring – Performance Step Gap	1100-040-162	1			1
31	Thrust Washer 360deg	1100-041-751 (see notes below)	1	1	1	1
32	Thrust Collar 360deg		1	1	1	1
33	Screw 360deg		3	3	3	3
34	Thrust Brg 360deg		1	1	1	1

Notes

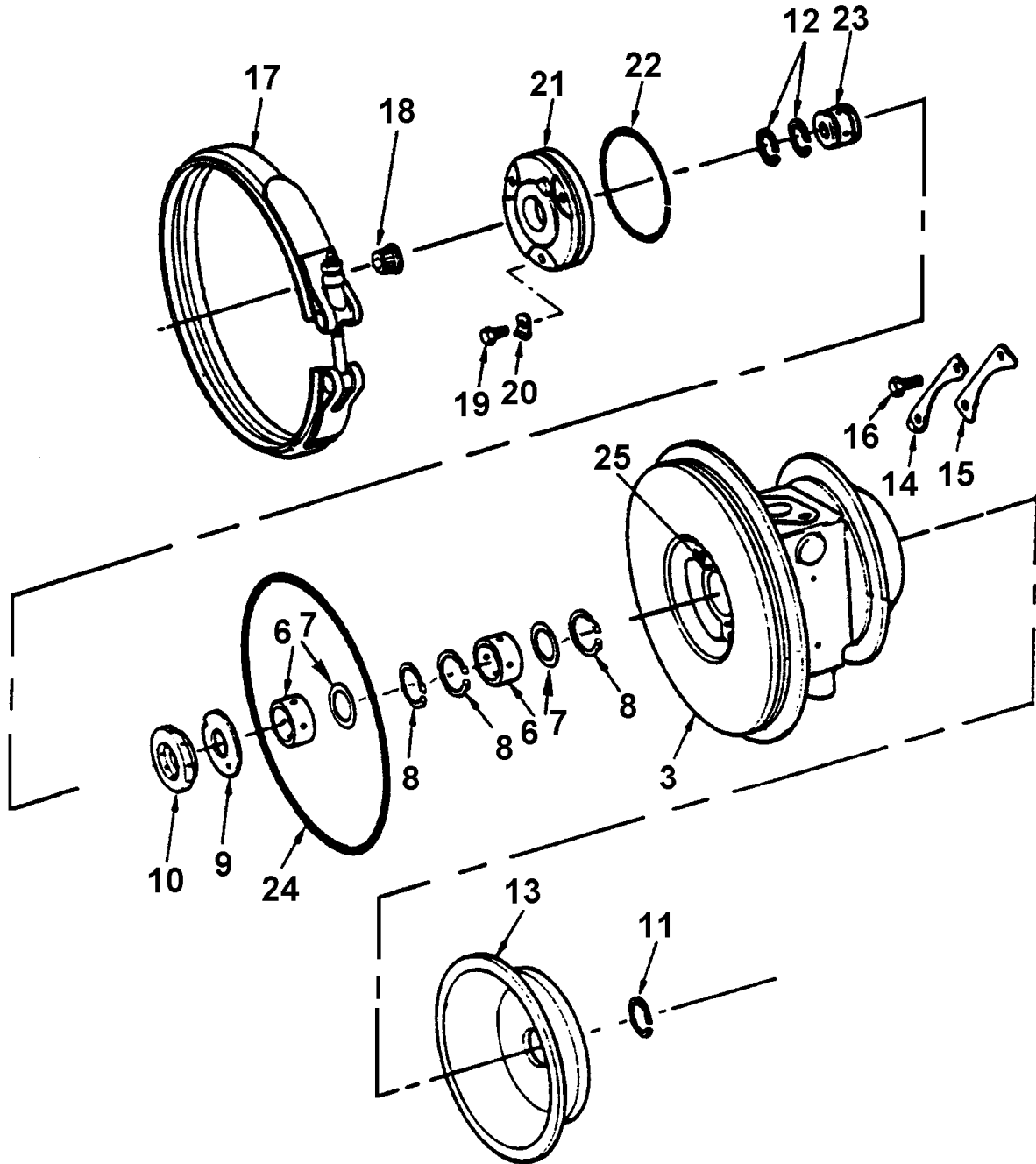
1. The 360 degree thrust kit is only sold as the 4-part kit (thrust bearing, collar, spacer and screws). All parts must be used together to give optimal performance.
2. 360 degree kit replaces standard thrust bearing and collar

Garrett T12 Type Turbos

Common Service Parts
Oversize Service Parts
Bearing Housings
Shaft & Wheels
Compressor Wheels
Turbine Housings

T12 Type

Common Service Parts



T12 Type

Repair Parts & Service Kits

All parts are available for purchase as individual components or in the following popular Repair Kits

Key	Part Description	MELETT Part Number	Quantity Per Turbo	Kit (Mini) Smooth Bore 1100-120-753	Kit (Mini) Step Bore 1100-120-752	Kit (Major) Smooth Bore 1100-120-751	Kit (Major) Step Bore 1100-120-754
6	Bearing OD/ID Std.	1100-180-100	2	2	2	2	2
7	Bearing Wear Washer	1100-180-190	2	2	2	2	2
	Bearing Kit. OD/ID Std.	1100-180-775					
8	Snap Ring	1100-180-140	3	3	3	3	3
9	Thrust Washer	1100-180-320	1	1	1	1	1
10	Thrust Collar	1100-120-200	1			1	1
11	Piston Ring, .8125" (T)	1100-120-160	1	1		1	
11	Piston Ring, .823" (T)	1100-045-160	1		1		1
12	Piston Ring, .687" (C)	1100-045-170	2	2	2	2	2
13	Heat Shroud, stamped	1100-120-340	1				
14	Lock plate (T)	1100-120-520	3	3	3	3	3
15	Clamp plate (T)	1100-120-480	3				
16	Bolt (T)	1100-120-600	6	6	6	6	6
	Locknut, V-Band clamp	1100-120-645	1				
18	Shaft Nut, 5/16"-24	1100-120-350	1	1	1	1	1
19	Bolt, thrust plate	1100-120-610	3	3	3	3	3
20	Lock, thrust plate	1100-120-550	3	3	3	3	3
21	Thrust Plate Assembly	1100-120-300	1			1	1
22	O-Ring, thrust plate	1100-120-150	1	1	1	1	1
23	Thrust Spacer	1100-060-200	1			1	1
24	O-Ring, bearing hsg.(C)	1100-120-155	1	1	1	1	1
					Replaces 468109-0000	Replaces 407884-0001	

See Over page for Available Oversize Bearings / Piston Rings

T12 Type

Oversize Repair Parts Available

Journal Bearings		
OE Std/Std: 441411-0001		
Oversize's / Undersize's Available		Part Number
OD +.005"	ID -.005"	1100-180-110
OD +.005"	ID Std	1100-180-114
OD Std.	ID -.005"	1100-180-117
OD +.010"	ID -.010"	1100-180-120
OD +.010"	ID Std	1100-180-124
OD Std	ID -.010"	1100-180-127
OD +.010"	ID -.005"	1100-180-131
OD +.015"	ID Std	1100-180-135

Piston Rings – Turbine End			Piston Rings – Compressor End		
OE part Number (Std): 403818-0030			OE part Number (Std): 403818-0047		
Oversize's Available		Part Number	Oversize's Available		Part Number
OD +.010"	Wth Std	1100-045-180	OD +.010"	Wth Std	1100-045-185
OD Std	Wth +0.010"	1100-045-181	OD +.020"	Wth Std	1100-045-186
OD +.010"	Wth +0.020"	1100-045-182			
OD +.010"	Wth +0.010"	1100-045-184			

T12 Type

Major Replacement Parts

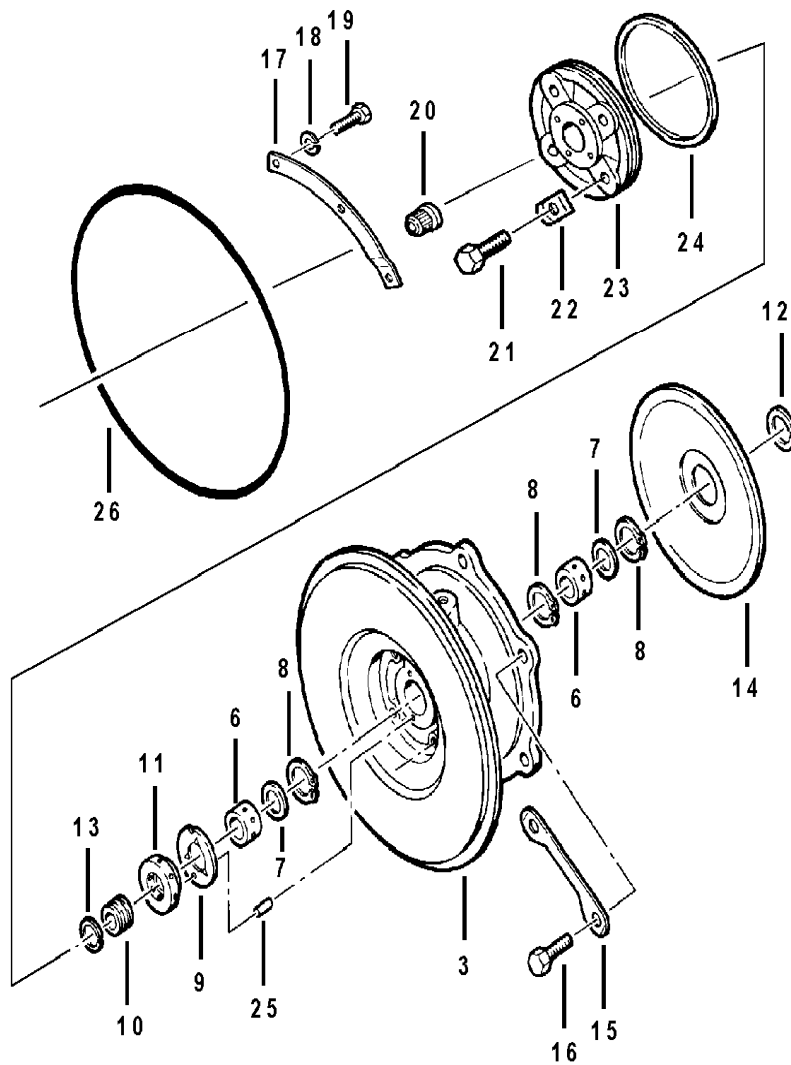
Garrett Part Number	CAT Part Number	Melett Part Number	Description
406866-0004	3S4480	1100-120-450	Bearing Housing T12
406866-0004	4S9702	1100-120-450	Bearing Housing T12
406866-0004	7N7252	1100-120-450	Bearing Housing T12
407778-0001	3S4490	1100-120-340	Heat Shield, T12
407778-0001	7N3760	1100-120-340	Heat Shield, T12
407778-0001	9S9327	1100-120-340	Heat Shield, T12
406845-0001	4S9701	1100-120-435	Shaft & Wheel T12
406845-0005	8S5167	1100-120-436	Shaft & Wheel T1224/27
406834-0002	3S4486	1100-120-300	Thrust plate Assy. T12
406834-0002	4S6479	1100-120-300	Thrust plate Assy. T12
406834-0002	8S5169	1100-120-300	Thrust plate Assy. T12

Garrett T18 Type Turbos

Common Service Parts
Oversize Service Parts
Major Replacement Parts

T18 Type

Common Service Parts



T18 Type

Repair Parts & Service Kits

All parts are available for purchase as individual components or in the following popular Repair Kits

Key	Part Description	MELETT Part Number	Qty Per Turb	Kit (Minor) Smooth Bore 1100-180-751	Kit (Minor) Step Bore 1100-180-752	Kit (Major) Smooth Bore 1100-180-753	Kit (Major) Step Bore 1100-180-754	Bearing Kit (1) 1100-180-775	
6	Bearing OD Std / ID Std	1100-180-100	2	2	2	2	2	2	
7	Bearing Wear Washer	1100-180-190	2	2	2	2	2	2	
8	Snap Ring	1100-180-140	3	3	3	3	3		
9	Thrust Washer	1100-180-320	1	1	1	1	1		
10	Thrust Spacer	1100-180-221	1			1	1		
11	Thrust Collar	1101-061-200	1			1	1		
12	Piston ring, 1.020" (T)	1100-180-161	1	1		1			
12	Piston ring, 1.030" (T)	1100-180-160	1		1		1		
13	Piston ring, 0.687" (C)	1100-045-170	2	2	2	2	2		
14	Heat Shroud, cast-type	1100-180-340	1						
15	Lock plate (T)	1100-180-520	3	3	3	3	3		
16	Bolt, 3/8"-16 x 3/4" (T)	1100-180-600	6	6	6	6	6		
17	Clamp Plate (C)	1100-180-500	6	6	6	6	6		
18	Lock washer, 5/16" I.D.	1100-180-580	12	12	12	12	12		
19	Bolt, 5/16"-18 X 3/4" (C)	1100-180-610	12	12	12	12	12		
20	Shaft Nut, 3/8"-24	1100-180-350	1	1	1	1	1		
21	Bolt, 10-24 X 7/8"	1100-180-620	4	4	4	4	4		
22	Lock tab, thrust plate	1100-180-550	4	4	4	4	4		
23	Thrust Plate Assembly	1100-180-300	1			1	1		
24	"O" Ring, thrust plate	1100-180-150	1	1	1	1	1		
25	Pin, bearing housing	1100-180-195	2						
26	O-Ring, comp. Hsg.	1100-180-155	1	1	1	1	1		
				Replace 468113-0000				Replace 468112-0000	Replace 408906-0000

Oversize Repair Parts Available

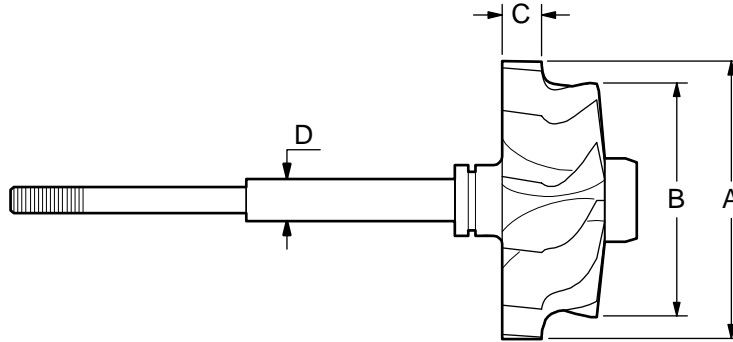
Journal Bearings		
OE Std/Std: 441411-0001		
Oversize's / Undersize's Available		Part Number
OD +.005"	ID -.005"	1100-180-110
OD +.005"	ID Std	1100-180-114
OD Std.	ID -.005"	1100-180-117
OD +.010"	ID -.010"	1100-180-120
OD +.010"	ID Std	1100-180-124
OD Std	ID -.010"	1100-180-127
OD +.010"	ID -.005"	1100-180-131
OD +.015"	ID Std	1100-180-135

Piston Rings		
Compressor End		
OE part Number (Std): 403818-0047		
Oversize's Available		Part Number
OD +.010"	Wth Std	1100-045-185
OD +.020"	Wth Std	1100-045-186

T18 Type

Major Replacement Parts - Detail

Shaft & Wheel T1810



Melett Part No.	To replace Garrett..	(A) Inducer Ø mm's	(B) Exducer Ø mm's	(C) Tip width mm's	(D) Shaft OD mm's
1100-180-435	407318-0001	110.5	85.9	13.9	15.9

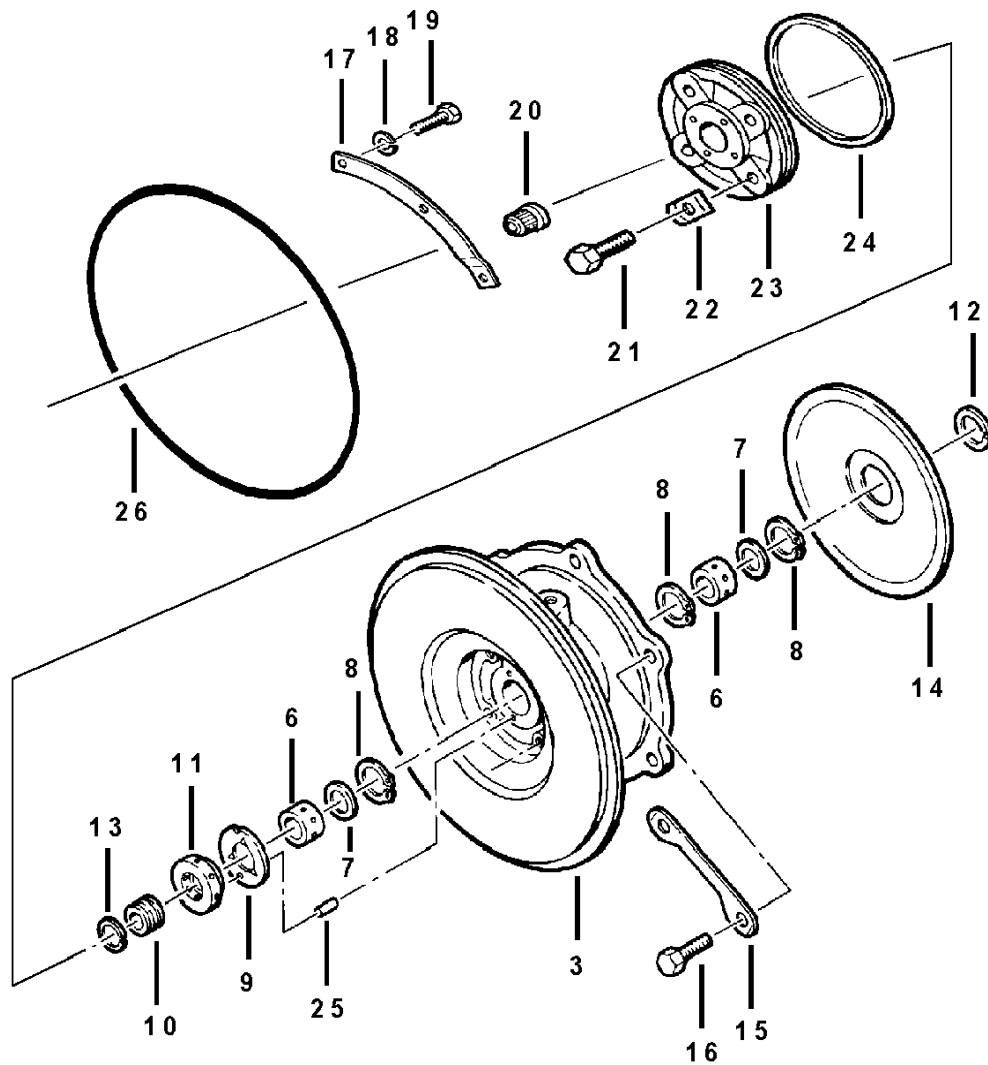
Melett's fully qualified Engineers are available to answer any technical enquiry regarding limits, tolerances, and turbo set-up configurations. Email: Engineer@melett.com

Garrett T18A Type Turbos

Common Service Parts
Oversize Service Parts

T18A Type

Common Service Parts



T18A Type

Repair Parts & Service Kits

All parts are available for purchase as individual components or in the following popular Repair Kits

Key	Part Description	MELETT	OE	Contents of	Service Kit	Service Kit	Service Kit
		Part Number	Part Number	OE Kit	T18A Minor	T18A Major	T18A Major
				468107-0000	1100-181-750	1100-181-751	1100-181-752
6	Journal Bearing (Std/Std)	1100-180-100	441411-0001	2	2	2	2
8	Retaining Ring J-Brg	1100-180-140	400408-0000	3	3	3	3
12	Piston Ring (T/End)	1100-180-160	408049-0007	1	1	1	1
13	Piston Ring (C/End)	1100-045-170	403818-0047	2	2	2	2
9	Thrust Washer	1100-180-190	407135-0000	2	2	2	2
11	Thrust Collar (3/8" Shaft)	1101-061-200	444834-0000				1
11	Thrust Collar (7/16" Shaft)	1101-083-200	444834-0001			1	
10	Thrust Spacer (3/8" Shaft)	1100-180-220	408768-0001				1
10	Thrust Spacer (7/16" Shaft)	1100-180-222	408662-0001			1	
9	Thrust Bearing	1100-180-320	449886-0000	1	1	1	1
20	Shaft Nut 3/8" x 24	1100-180-350	400768-0013	1	1		1
24	O-Ring	1100-181-150	400424-0001	1	1	1	1
20	Shaft Nut 7/16" x 20	1100-181-350	400768-0014	1	1	1	
22	Lock Plate	1100-181-520	404223-0000	4			
	Lock Plate	1100-181-550	407648-0002	4	4	4	4
21	Bolt	1100-040-560	400450-0001	8	8	8	8
	Clamp Plate	N/A	407403-0000	4			
	Bolt	N/A	400805-0305	4			
					similar to 468107-0	7/16" Shaft	3/8" Shaft

Oversize Repair Parts Available

Journal Bearings		
OE Std/Std: 441411-0001		
Oversize's / Undersize's Available		Part Number
OD +.005"	ID -.005"	1100-180-110
OD +.005"	ID Std	1100-180-114
OD Std.	ID -.005"	1100-180-117
OD +.010"	ID -.010"	1100-180-120
OD +.010"	ID Std	1100-180-124
OD Std	ID -.010"	1100-180-127
OD +.010"	ID -.005"	1100-180-131
OD +.015"	ID Std	1100-180-135

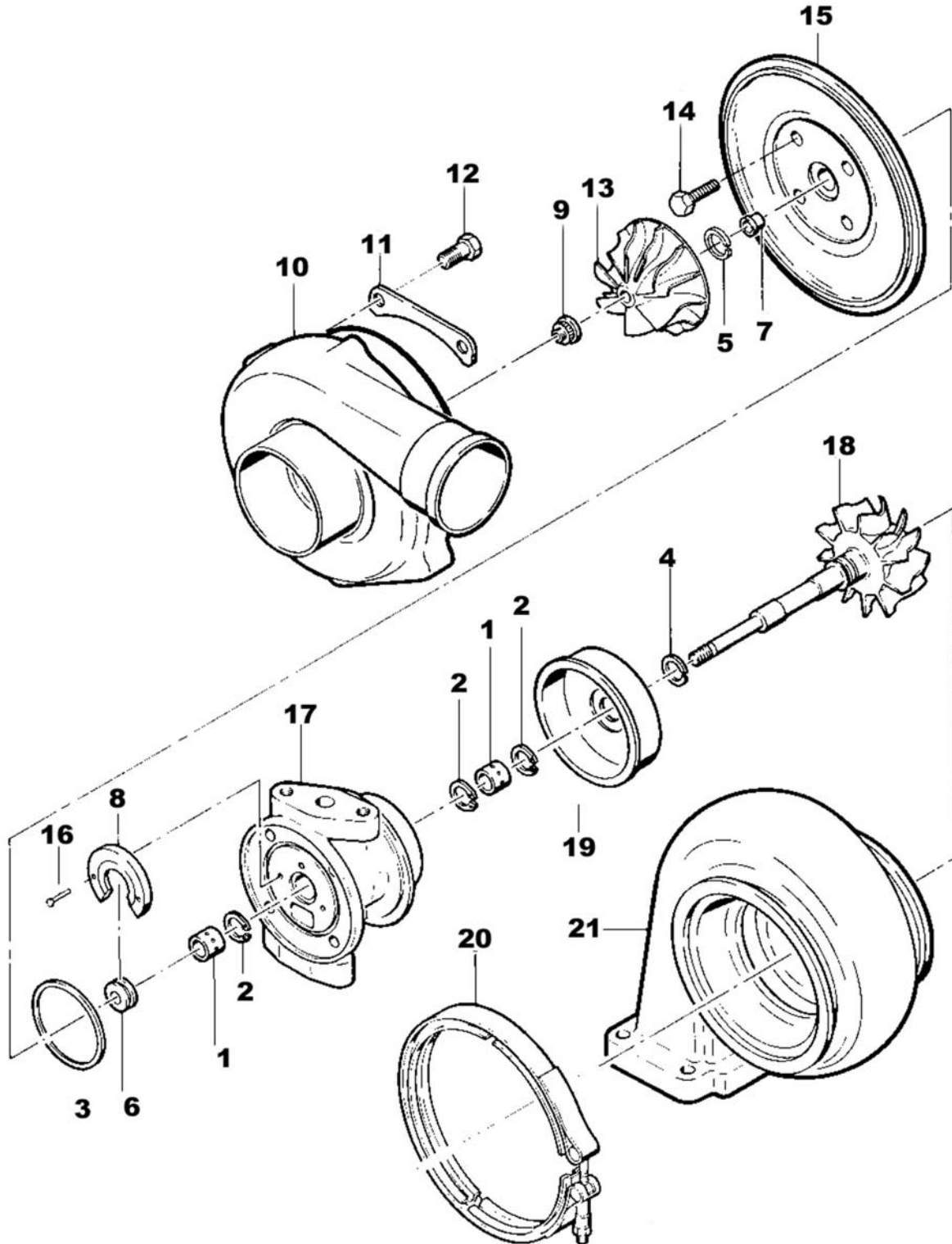
Piston Rings		
Compressor End		
OE part Number (Std): 403818-0047		
Oversize's Available		Part Number
OD +.010"	Wth Std	1100-045-185
OD +.020"	Wth Std	1100-045-186

Garrett T45 / T51 Type Turbos

Common Service Parts
Oversize Service Parts

T45/51 Type

Common Replacement Parts



This illustration is a guide and does not necessarily show all parts accurately

T45/51 Type

Repair Parts & Service Kits

All parts are available for purchase as individual components or in the following popular Repair Kits

Key	Part Description	MELETT Part Number	Qty Per Turbo	Minor Kit 1100-045-753	Service Kit 1100-045-754	Major Kit 1100-045-755
1	Bearing, OD / ID Std	1100-045-100	2	2	2	2
2	Retaining Ring (J-Brg)	1100-045-140	3	3	3	3
3	"O" Ring, Seal Plate / Brg Hsg	1100-045-150	1	1	1	1
10	"O" Ring, Seal Plate / Comp Hsg	1100-045-155	1		1	1
4	Piston Ring (Turb. End)	1100-045-160	1	1	1	1
5	Piston Ring (Comp. End)	1100-045-170	2	2	2	2
6	Thrust Collar	1100-045-200	1			1
7	Thrust Spacer	1100-045-220	1		1	1
8	Thrust Bearing	1100-045-320	1	1	1	1
9	Shaft Nut	1100-045-350	1	1	1	1
-	Dowty Washer (seal plate)	1100-045-580		4	4	4
14	Bolts (Seal Plate)	1100-045-600	4	4	4	4
12	Bolts (Clamp Plates) Patched	1100-045-610	8		8	8
16	Screw (Thrust Brg) Patched	1100-045-620	3	3	3	3
					Similar to 468132-0001 (No Thrust Collar)	Includes Thrust Collar

Oversize Repair Parts Available

Journal Bearings		
Original Garrett Part Number (Std/Std): 410394-0001		
Oversize's / Undersize's Available		Part Number
OD +.010"	ID -.010"	1100-045-120
OD +.010"	ID Std	1100-045-124
OD Std	ID -.010"	1100-045-127

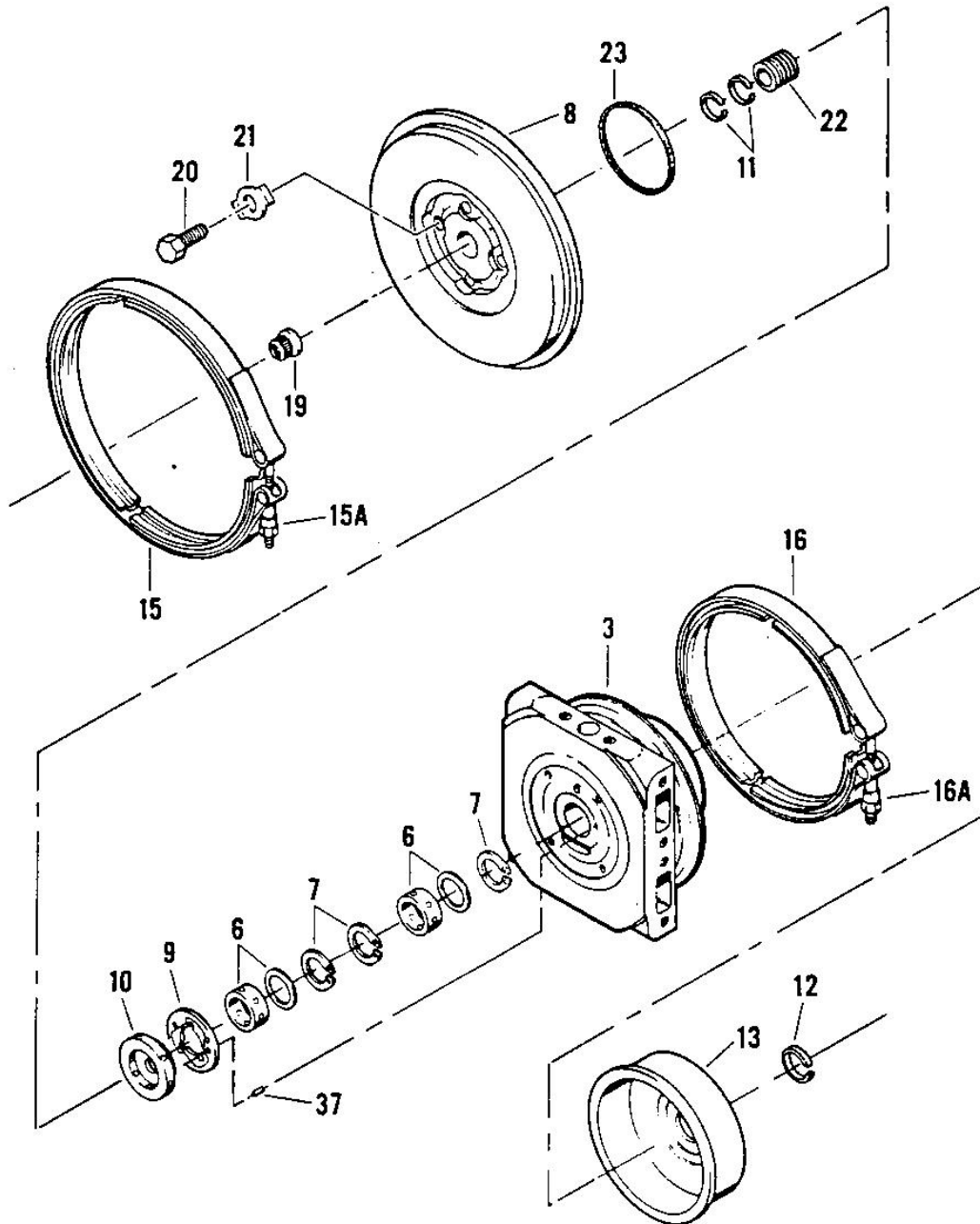
Piston Rings – Turbine End			Piston Rings – Compressor End		
OE part Number 403818-0030			OE part Number 403818-0047		
Oversize's Available		Part Number	Oversize's Available		Part Number
OD +.010"	Wth Std	1100-045-180	OD +.010"	Wth Std	1100-045-185
OD Std	Wth +0.010"	1100-045-181	OD +.020"	Wth Std	1100-045-186
OD +.010"	Wth +0.020"	1100-045-182			
OD +.010"	Wth +0.010"	1100-045-184			

Garrett TL-TV-TW 60/70/80 Type Turbos

Common Service Parts (T18 Style Thrust)
Common Service Parts (T45 Style Thrust)
Oversize Parts
Major Replacement Parts
(Shaft & Wheels, Compressor Wheels, Housings, Heat Shields)

TL-V-W Type (T18 Style Thrust)

Common Service Parts



This illustration is a guide and does not necessarily show all parts accurately

TL-V-W Type (T18 Style Thrust) Repair Parts & Service Kits

All parts are available for purchase as individual components or in the following popular Repair Kits

Key	Part Description	MELETT Part Number	Quantity Per Turbo	Repair Kit Minor 1101-678-750	Repair Kit Major 1101-678-751	Brg Kit 1100-180-775
6	Bearing, OD/ID Std	1100-180-100	2	2	2	2
6	Bearing Wear Washer	1100-180-190	2	2	2	2
7	Snap Ring	1100-180-140	3	3	3	
8	Seal Plate Assembly	1101-461-360	1			
9	Thrust Washer/Brg	1100-180-320	1	1	1	
10	Thrust Collar	1101-061-200	1		1	
22	Thrust Spacer	1100-180-220	1		1	
11	Piston Ring 0.687" (C)	1100-045-170	2	2	2	
12	Piston Ring, 0.823" (T)	1100-045-160	1	1	1	
19	Shaft nut, 5/16"-24	1100-120-350	1	1	1	
19	Shaft Nut, 3/8"-24	1100-180-350	1	1	1	
20	Bolt, 1/4"-20x1"	1101-680-620	4	4	4	
21	Lock tab, Seal Plate	1101-461-550	4	4	4	
23	"O" Ring, Seal Plate	1100-040-150	1	1	1	
15	Locknut, 1/4"-28 (C)	1100-120-645	1			
				Replace 468103-0	Replace 468211-0	

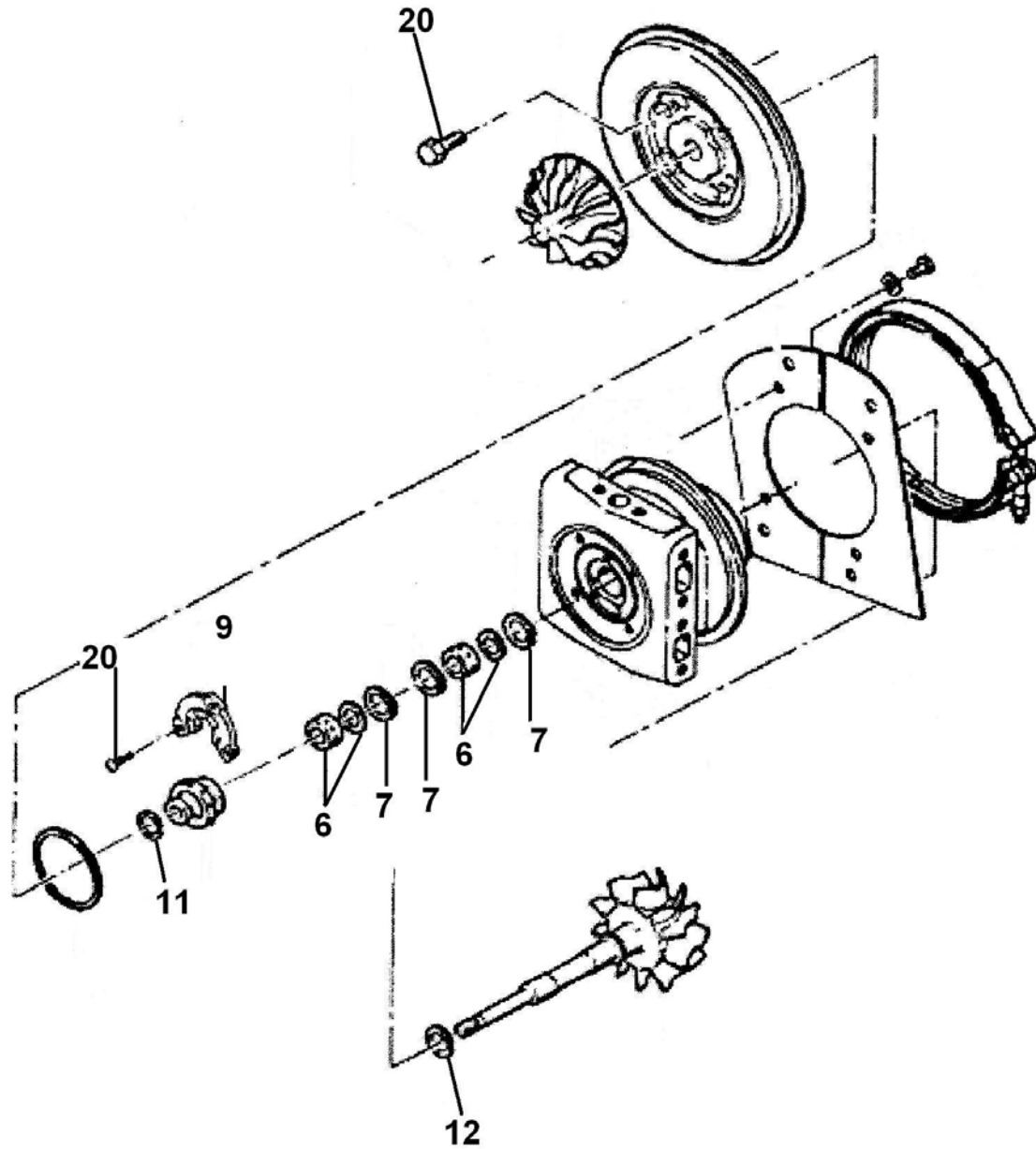
Oversize Parts Available

Journal Bearings		
OE Std/Std: 441411-0001		
Oversize's / Undersize's Available		Part Number
OD +.005"	ID -.005"	1100-180-110
OD +.005"	ID Std	1100-180-114
OD Std.	ID -.005"	1100-180-117
OD +.010"	ID -.010"	1100-180-120
OD +.010"	ID Std	1100-180-124
OD Std	ID -.010"	1100-180-127
OD +.010"	ID -.005"	1100-180-131
OD +.015"	ID Std	1100-180-135

Piston Rings – Turbine End			Piston Rings – Compressor End		
OE part Number (Std): 403818-0030			OE part Number (Std): 403818-0047		
Oversize's Available		Part Number	Oversize's Available		Part Number
OD +.010"	Wth Std	1100-045-180	OD +.010"	Wth Std	1100-045-185
OD Std	Wth +0.010"	1100-045-181	OD +.020"	Wth Std	1100-045-186
OD +.010"	Wth +0.020"	1100-045-182			
OD +.010"	Wth +0.010"	1100-045-184			

TL-V-W Type (T18 Journal / T45 Style Thrust)

Common Service Parts



This illustration is a guide and does not necessarily show all parts accurately

TL-V-W Type (T18 Journal / T45 Style Thrust)

Repair Parts & Service Kits

All parts are available for purchase as individual components or in the following popular Repair Kits

Key	Part Description	MELETT Part Number	Quantity Per Turbo	Repair Kit Minor 1101-678-752	Repair Kit Minor 1101-678-753
6	Bearing Narrow, Std	1100-180-100	2	2	2
6	Bearing Wide, Std	1101-285-100	2		
6	Bearing Wear Washer	1100-180-190	2	2	2
7	Snap Ring	1100-180-140	3	3	3
9	Thrust Bearing	1102-042-320	1	1	1
9	Thrust Bearing	1102-042-321			
10	Thrust Collar	1101-073-200	1		1
22	Thrust Spacer	1101-063-220	1		1
11	Piston Ring 0.687" (C)	1100-045-170	2	2	2
12	Piston Ring, 0.823" (T)	1100-045-160	1	1	1
12	Piston Ring, 1.02" (T)	1100-180-160			
19	Shaft nut, 5/16"-24	1100-120-350	1	1	1
19	Shaft Nut, 3/8"-24	1100-180-350	1	1	1
20	Bolt, M6-1.0 x 20	1100-045-600	4	4	4
20	Screw (T-Brg)	1100-045-620	3	3	3
23	"O" Ring, Seal Plate	1100-040-150	1	1	1
					Replace 468267-0

Oversize Parts Available

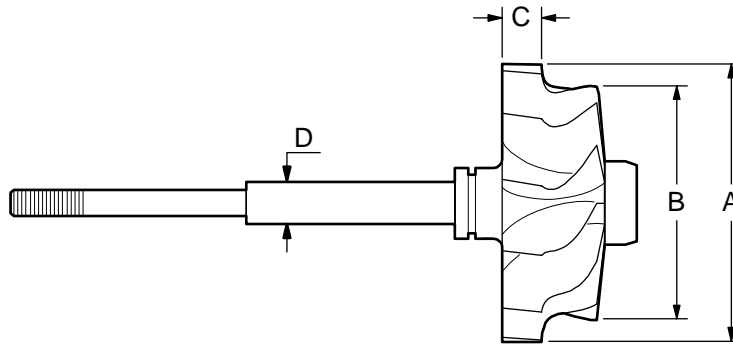
Journal Bearings		
OE Std/Std: 441411-0001		
Oversize's / Undersize's Available		Part Number
OD +.005"	ID -.005"	1100-180-110
OD +.005"	ID Std	1100-180-114
OD Std.	ID -.005"	1100-180-117
OD +.010"	ID -.010"	1100-180-120
OD +.010"	ID Std	1100-180-124
OD Std	ID -.010"	1100-180-127

Piston Rings – Turbine End			Piston Rings – Compressor End		
OE part Number (Std): 403818-0030			OE part Number (Std): 403818-0047		
Oversize's Available		Part Number	Oversize's Available		Part Number
OD +.010"	Wth Std	1100-045-180	OD +.010"	Wth Std	1100-045-185
OD Std	Wth +0.010"	1100-045-181	OD +.020"	Wth Std	1100-045-186
OD +.010"	Wth +0.020"	1100-045-182			
OD +.010"	Wth +0.010"	1100-045-184			

TL-V-W Type

Major Replacement Parts - Detail

Shaft & Wheel



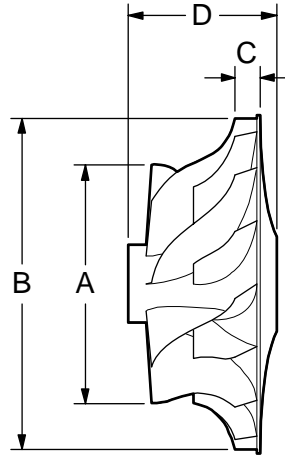
Melett Part No.	To replace Garrett No.	To replace CAT Number	Turbo Model	(A) Inducer ø mm's	(B) Exducer ø mm's	TRIM
1101-081-435	408492-0014/21	9N2043	TV81	111.4	97.1	76
1101-081-436	408492-0016/22	6N4606	TV81	111.4	87.7	62
1101-094-435	442208-0001	4W1223	TV94	129.5	106.2	67
1101-078-435	442479-0002	4W5196	TV78	104.9	92.8	-
1101-675-437	447386-0001	4P3823	TV75	97.5	87.5	-

Melett's fully qualified Engineers are available to answer any technical enquiry regarding limits, tolerances, and turbo set-up configurations. Email: Engineer@melett.com

TL-V-W Type

Major Replacement Parts – Detail

Compressor Wheels



Melett Part No.	To replace Garrett No.	To replace Other OE Number	Turbo Model	(A) Inducer \varnothing mm's	(B) Exducer \varnothing mm's	TRIM
1101-881-401	409132-0001	6N7961	TV/LW	76.0	108.0	G
1101-881-400	409132-0002	6N7967	TV81	85.4	108.0	-
1101-081-403	409132-0004	9N3674	TV81	76.2	108.0	H
1101-681-404	409132-0007	7N8190	TV81	76.0	108.0	G
1101-081-400	409132-0009	DDC 8923990	TV81	80.6	108.0	-
1101-081-402	408463-0002	DDC 5199605	TV81	77.5	108.0	-

TL-V-W Type

Major Replacement Parts – Detail

Bearing Housings

Melett Part Number	Garrett Part Number	Other OE Number	Turbo Model	Description
1101-672-450	408495-0010	9N2035	TV/L/W	Bearing Housing, TV61 / 81
1101-671-450	408495-0024	DETROIT	TV/L/W	Bearing Housing, TV61 / 71 / 81
1101-481-450	444723-0001	7N8188	TV/L/W	Bearing Housing, TL81 / 61
1101-092-450	410301-0002	4W1224	TV92	Bearing Housing, TV92

Turbine and Compressor Housings

Melett Part Number	Garrett Part Number	Other OE Number	Turbo Model	Description
1101-091-820	408995-0012	1N3086	TV91	Turbine Housing TV91
1101-081-801	409168-0081	9N3675	TV/TL81	Compressor Cover

Heat Shields and Backplates

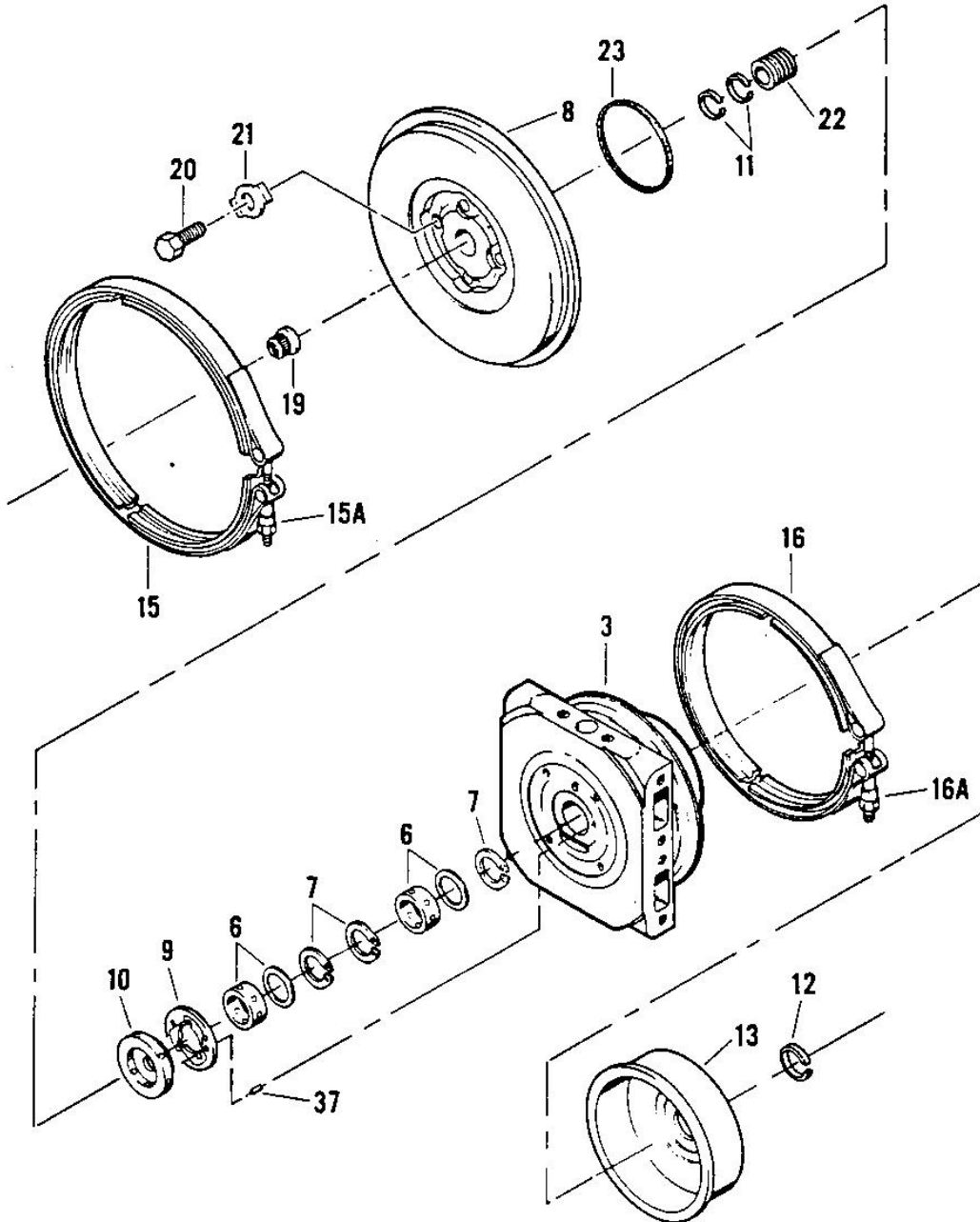
Melett Part Number	Garrett Part Number	Other OE Number	Turbo Model	Description
1101-680-340	407657-0004	9N2037	TV81	Heat Shield TV81
1101-680-340	407657-0004	9N3701	TV81	Heat Shield TV81
1101-680-360	408487-0013	6N7962	TV81	Backplate, TV81

Garrett TV91-94 Type Turbos

Common Service Parts
Oversize Parts
Major Replacement Parts
(Shaft & Wheels, Compressor Wheels, Housings, Heat Shields)

TV91-94 Type

Common Service Parts



This illustration is a guide and does not necessarily show all parts accurately

TV91-94 Type

Common Service Parts

Repair Parts & Service Kits

All parts are available for purchase as individual components or in the following popular Repair Kits

Key	Part Description	MELETT Part Number	OE Number	Quantity Per Turbo	Repair Kit (Minor) 1101-090-750	Repair Kit (Major) 1101-090-755
6	Journal Bearing Std/Std	1101-090-100	410121-0007	2	2	2
7	Retaining Ring (J-Brg)	1101-090-140	400446-0118	3	3	3
23	O-Ring (B/Hsg)	1102-040-150	400424-0006	1	1	1
12	Piston Ring Turbine End	1101-090-160	408049-0012	1	1	1
11	Piston Ring Comp End	1100-045-170	403818-0047	2	2	2
10	Thrust Collar	1101-092-200	443792-0001	1		1
22	Thrust Spacer	1100-180-222	408662-0001	1		1
6	Wear Washer	1101-090-250	410122-0000	2	2	2
19	Shaft Nut	1100-181-350	400768-0014	1	1	1
9	Thrust Bearing	1101-090-320	410124-0000	1	1	1
20	Bolt (Seal Plate)	1101-090-620	400859-0407	4	4	4
					Replace 707899-1	Minor Kit plus thrust parts Similar To 468416-0000

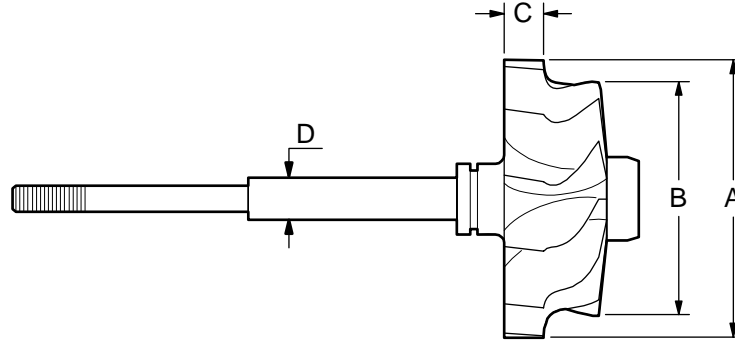
Oversize Repair Parts Available

Piston Rings – Turbine End		Piston Rings – Compressor End	
OE part Number: 408049-0012		OE part Number: 403818-0047	
Oversize's Available	Part Number	Oversize's Available	Part Number
Not currently available		OD +.010"	Wth Std 1100-045-185
		OD +.020"	Wth Std 1100-045-186

TV91-94 Type

Major Replacement Parts - Detail

Shaft & Wheel



Melett Part No.	To replace Garrett No.	To replace CAT Number	Turbo Model	(A) Inducer ø mm's	(B) Exducer ø mm's	TRIM
1101-094-435	442208-0001	4W1223	TV94	129.5	106.2	67

Turbine Housing

Melett Number	To replace OE No.	To replace CAT Number	Turbo Model	Description
1101-091-820	408995-0012	1N3086	TV91	Turbine Housing, TV91

Bearing Housing

Melett Number	To replace OE No.	To replace CAT Number	Turbo Model	Description
1101-092-450	410301-0002	4W1224	TV92	Bearing Housing TV92

Garrett GT12 Type Turbos

Common Service Parts

GT12 Type

Common Service Parts

Illustration for this turbo is not currently available – please contact Melett Engineers for latest availability of technical information.

GT12 Type

Repair Parts & Service Kits

Key	Part Description	MELETT Number	Qty Per Turbo	Repair Kit 1102-012-751
	Journal Bearing (Ramped Thrust Faces)	1102-012-100	1	1
	Piston Ring (Same T&C End)	1102-012-160	2	2
	Thrust Washer	N/A	1	

Oversize Repair Parts are not available for this turbo model.

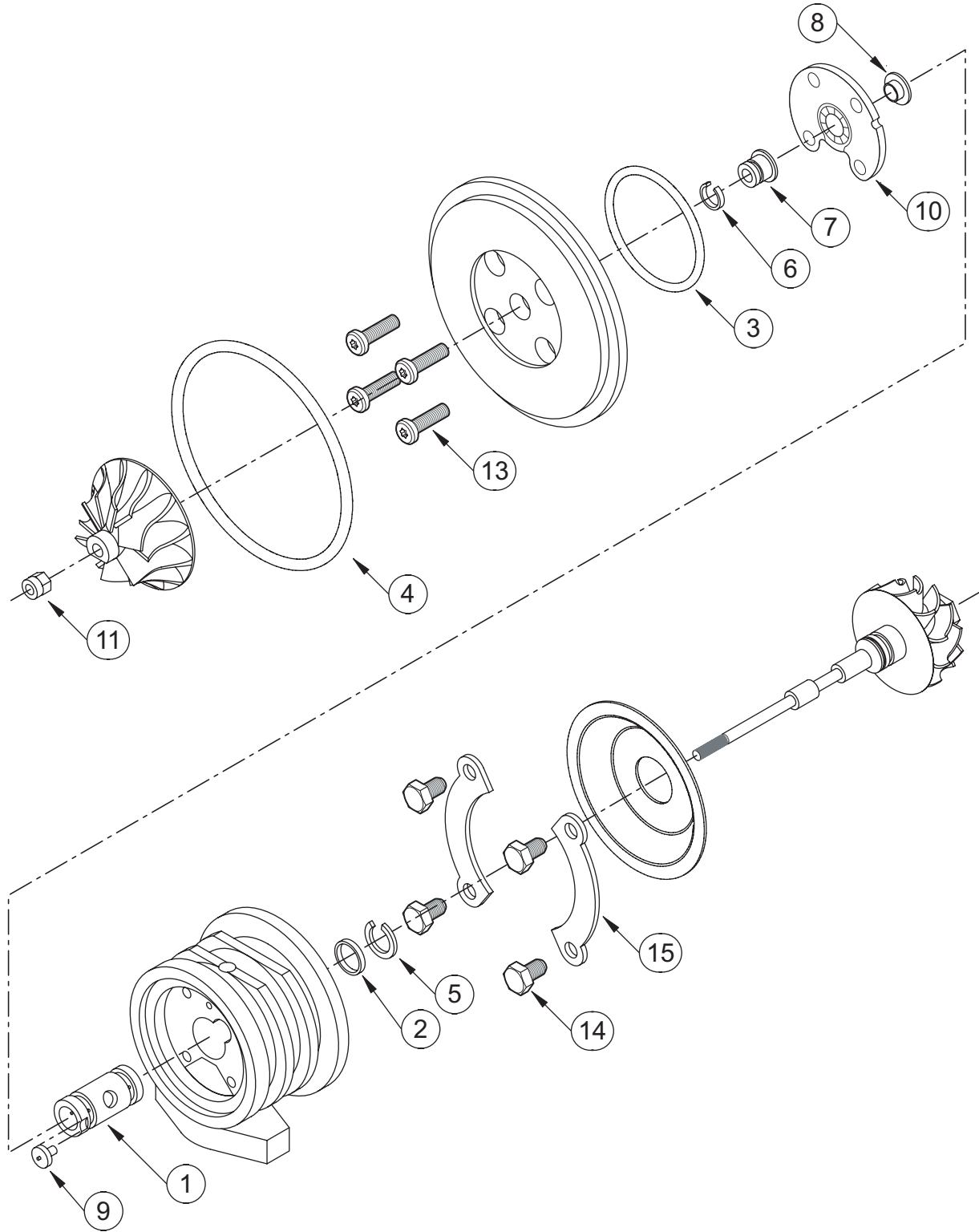
Technical Note: Melett Engineers do not recommend the use of undersize bearings / shafts in the GT12 turbos.

Garrett GT / VNT15 - 25 Type Turbos

Common Service Parts 1st Generation
Common Service Parts 2nd Generation
Oversize Service Parts
CHRA'S
Shaft and Wheels
Compressor Wheels
Backplates
Bearing Housings

GT / VNT 15-25 Type

Common Service Parts



Note: Journal bearing for straight shaft is identified with a line cut around the OD.
 Shaft and Wheel shown is the 'slender shaft' design

GT / VNT 15-25 Type 1st Generation Parts

Repair Parts & Service Kits

Key	Part Description	Melett Part Number	Qty Per Turbo	Major Kit F/Back 9mm 1102-015-752	Major Kit S/Back 9mm 1102-015-753	Major Kit 10mm Thrust 1102-015-754	Universal Kit All Thrusts 1102-015-756
1	Journal Bearing (Slender Shaft)	1102-015-100	1	1	1	1	1
1	Journal Bearing (Straight Shaft)	1102-015-101	1				1
1	Journal Bearing (Ø6.5mm ID GT1544)	1102-015-102	1				
2	Spiral snap ring (Brg retainer)	1102-015-140	1	1	1	1	1
3	"O" Ring Insert (Square)	1102-015-150	1	1	1	1	1
4	"O" Ring Brg Hsg to CC (82mm)	1102-015-151	1	1	1	1	1
4	"O" Ring Brg Hsg to CC (88mm)	1102-015-152	1	1	1	1	1
4	"O" Ring Brg Hsg to CC (95mm)	1102-015-153	1	1	1	1	1
4	"O" Ring Brg Hsg to CC (108mm)	1102-015-154	1	1	1	1	1
4	"O" Ring Brg Hsg to CC (114mm)	1102-015-155	1	1	1	1	1
5	Piston Ring (Turbine End)	1102-015-160	1	1	1	1	1
6	Piston Ring (Comp 9.3mm)	1102-015-171	1	1	1		1
6	Piston Ring (Comp 10mm)	1102-015-173	1			1	1
7	Thrust Flinger (Flat back 10-pad 9.3mm P/Ring)	1102-015-200	1	1			1
7	Thrust Flinger (S/back EBD 10-pad 9.3mm P/Ring)	1102-015-201	1		1		1
7	Thrust Flinger (10-pad /10mm P/Ring)	1102-015-202	1			1	1
8	Thrust Collar (10-pad)	1102-015-240	1	1	1	1	1
9	Anti rotation pin (journal brg)	1102-015-290	1	1	1	1	1
10	Thrust Bearing (New 360 degree 10-pad) – fits all GT15-25 applications	1102-015-320	1	1	1	1	1
11	Shaft nut LHT	1102-015-351	1	1	1	1	1
-	Flanged Bolt (Comp Cover)	1102-015-610	6	6	6	6	6
13	Locking screw (s/plate to brg hsg)	1102-015-620	4	4	4	4	4
14	Bolt (Turb Hsg)	1102-015-600	5	5	5	5	5
-	Clamp Washer (Turb Hsg)	1102-015-481	5	5	5	5	5
				Replace 732136-1 & 732248-1	Replace 732136-1 & 732248-2	Replace 732136-1 & 732248-3	Replace 732252-1

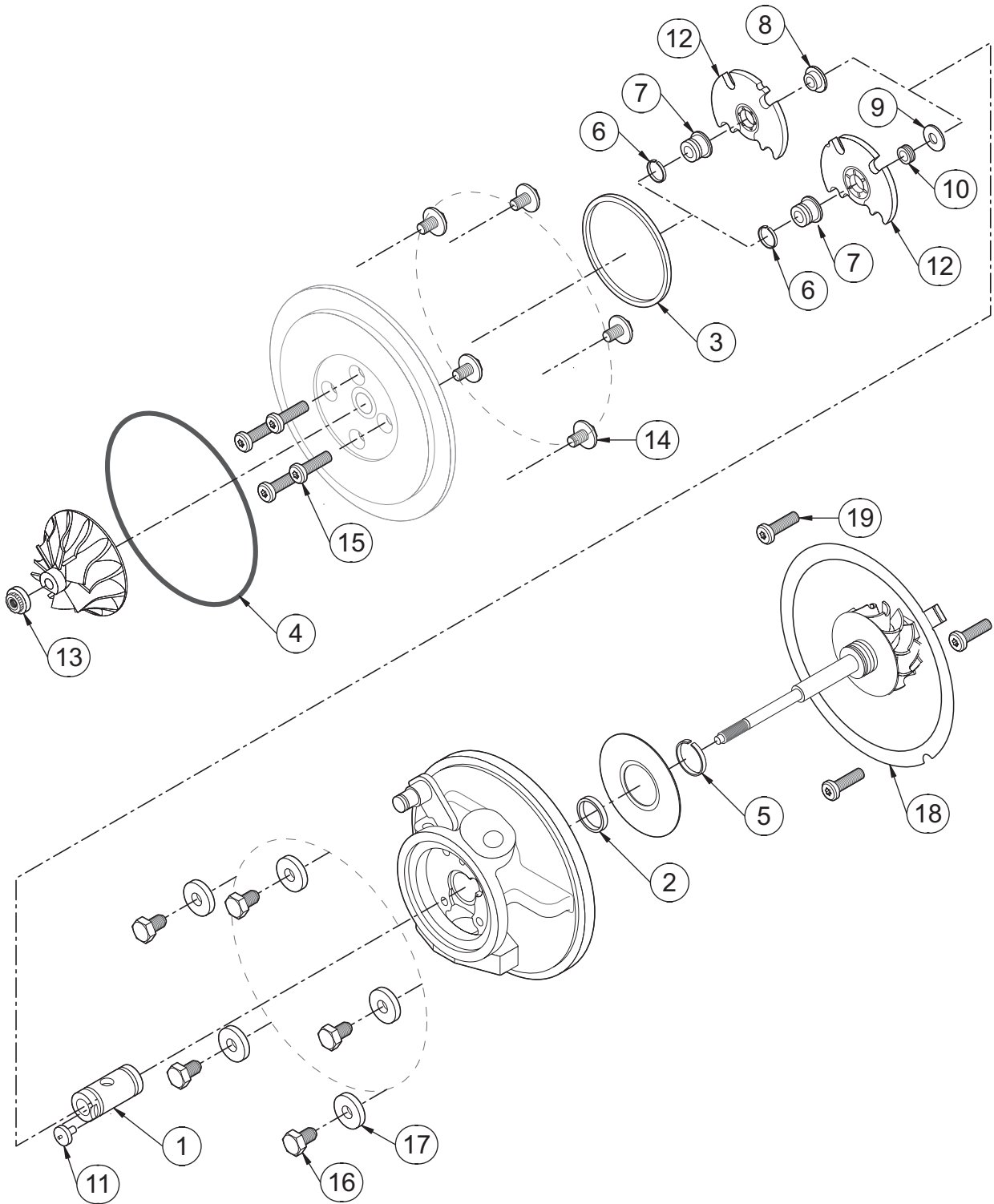
Notes:

All of the above parts are available for purchase as individual items at competitive prices.

All of the above kits are also available with the straight shaft journal bearing at the same price – please state your preference upon ordering. See over page for full list of available kits

GT / VNT 15-25 Type

Common Service Parts



GT / VNT 15-25 Type 2nd Generation Parts

Repair Parts & Service Kits

Key	Part Description	Melett Part Number	Qty Per Turbo	Major Kit 1102-015-771	Major Kit 1102-015-781	Major Kit 1102-015-782	Major Kit 1102-015-783
1	Journal Bearing Std	1102-015-104	1		1		1
1	Journal Bearing (Ø6.5 ID)	1102-015-103	1	1			
1	Journal Bearing (Straight Shaft)	1102-015-101	1			1	1
2	Spiral snap ring (Brg retainer)	1102-015-140	1	1	1	1	1
3	"O" Ring Insert (Square)	1102-015-150	1	1	1	1	1
4	"O" Ring Brg Hsg to CC (82mm)	1102-015-151	1		1	1	1
4	"O" Ring Brg Hsg to CC (88mm)	1102-015-152	1		1	1	1
4	"O" Ring Brg Hsg to CC (95mm)	1102-015-153	1		1	1	1
4	"O" Ring Brg Hsg to CC (108mm)	1102-015-154	1	1	1	1	1
4	"O" Ring Brg Hsg to CC (114mm)	1102-015-155	1		1	1	1
5	Piston Ring (Turbine End)	1102-015-160	1	1	2	1	1
6	Piston Ring (Comp 10mm)	1102-015-173	1	1	1	1	1
7	Thrust Flinger (Large pad /10mm P/Ring)	1102-015-202	1		1	1	1
7	Thrust Flinger Oil Groove Small Pad	1102-015-203		1			
8	Thrust Collar Oil Groove small pad	1102-015-243		1			
8	Thrust Collar 10 Pad	1102-015-240					
9	Thrust Washer Oil Groove Large Pad	1102-015-242			1	1	1
10	Thrust Spacer Oil Groove Large Pad	1102-015-220			1	1	1
11	Anti rotation pin (journal brg)	1102-015-290	1	1	1	1	1
12	Thrust Bearing (New 360 degree 10-pad) – fits all GT15-25 applications	1102-015-320	1				
12	Thrust Bearing – Oil groove small pad	1102-015-322		1			
12	Thrust Bearing – Oil groove Large pad	1102-015-324			1	1	1
13	Shaft nut LHT	1102-015-351	1	1	1	1	1
14	Flanged Bolt (Comp Cover)	1102-015-610	6	4	6	6	6
15	Locking screw (s/plate to brg hsg)	1102-015-620	4	4	4	4	4
16	Bolt (Turb Hsg)	1102-015-600	5	5	5	5	5
17	Clamp Washer (Turb Hsg)	1102-015-481	5	3	5	5	5
18	Gasket VNT turbine	1102-015-795	1				
19	Screw VNT nozzle assy	1102-015-630	3				

Notes:

All of the above parts are available for purchase as individual items at competitive prices.

GT / VNT 15-25 Type

Repair Parts & Service Kits

Summary of All Repair Kits

We have been asked to produce many variations of repair kits for this popular model – here is a summary description for the kits available and cross reference where available.

Melett No.	OE Number	Description
1102-015-752		Major Kit GT15-25 (Slender Shaft Brg / Flatback 9mm Thrust & P/Ring)
1102-015-753		Major Kit GT15-25 (Slender Shaft Brg / EBD 9mm Thrust & P/Ring)
1102-015-754		Major Kit GT15-25 (Slender Shaft Brg / 10mm Thrust & P/Ring)
1102-015-755		Universal Kit GT15-25 (Slender Shaft Brg Only - All 3 Thrusts)
1102-015-765		Universal Kit GT15-25 (Straight Shaft Brg Only - All 3 Thrusts)
1102-015-756	732252-0001	Universal Kit GT/VNT 15-25 - (directly replace 732252-1 with 2 x journal brgs).
1102-015-758	732136-0001	Base kit GT/VNT15-25 (Slender Shaft) - replace 732136-1
1102-015-759	732245-0001	Base kit GT/VNT15-25 (Straight shaft) - replace 732245-1
1102-015-760	732248-0001	Thrust Kit GT15 Flatback 9mm (replace 732248-1)
1102-015-761	732248-0002	Thrust Kit GT15-25 EBD (Superback) 9mm (replace 732248-2)
1102-015-762	732248-0003	Thrust Kit GT15-25 10mm Flinger (replace 732248-3)
1102-015-763		Repair Kit GT15-25 (Slender Shaft Brg / No Flingers)
1102-015-764		Repair Kit GT1544 (6.5mm ID Brg / 10mm Thrust)
1102-015-765		Repair Kit (Universal) GT15-25 (Straight Shaft/All Thrusts)
1102-015-766		Repair Kit GT15-25 (Straight Shaft / 10mm P/Ring)
1102-015-767		Repair Kit VNT (2 nd gen J-Brg / 10mm Flinger)
1102-015-768		Repair Kit VNT (2 nd Gen J-Brg / 9.3mm Flinger)
1102-015-770		Thrust Kit GT15 (Oil Groove Thrust - Small Pad)
1102-015-771		Repair Kit GT15 (/ 6.5mm ID Brg /Small Pad Thrust)
1102-015-780		Thrust Kit GT15 (Oil Groove Thrust - Large Pad)
1102-015-781		Repair Kit GT15 (2 nd gen J-Brg /Large Pad Thrust)
1102-015-782		Repair Kit (Universal) VN15-25 (Straight Shaft/Large Pad Oil groove Thrust)
1102-015-783		Repair Kit (Universal) VNT15-25 (Both J-Brgs /Large Pad Oil groove Thrust)

GT / VNT 15-25 Type

Oversize Repair Parts Available

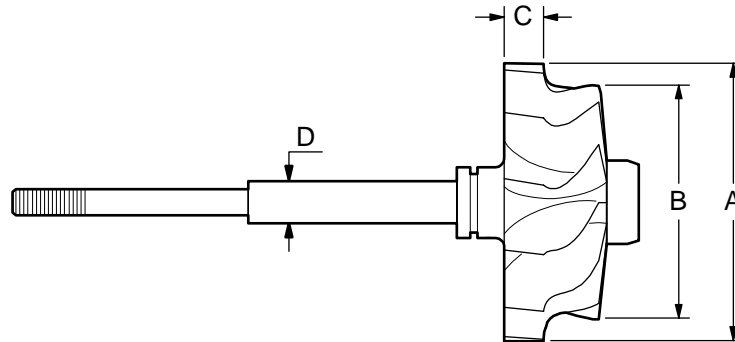
Journal Bearings			
OE part number Slender Shaft (Std/Std): 433123-0002 OE part number Straight Shaft (Std/Std): 435795-0001			
Oversize's Available		Part Number (Slender shaft)	Part Number (Straight shaft)
OD + 005	ID Std	1102-015-114	N/A
OD Std	ID -.005"	1102-015-117	N/A
OD + 010	ID Std	1102-015-124	N/A
OD Std	ID -.010"	1102-015-127	N/A

Technical Note: Melett Engineers do not recommend the use of undersize bearings / shafts in the GT/VNT turbos. These turbos are developed using 'limit state' design, which does not allow for any removal of material during reconditioning. We offer the bearings so a temporary repair can be made where no other options are available.

Piston Rings - Turbine		
OE part number T/End Std/Std: 400749-0006		
Oversize's Available		Part Number
OD +.010	Wth Std	1102-015-180
OD Std	Wth +.010	1102-015-181
OD +.010	Wth +.010	1102-015-182

Piston Rings - Compressor		
OE part number C/End Std/Std: 700590-0001		
Oversize's Available		Part Number
OD +.010	Wth Std	1102-015-185

GT / VNT 15-25 Type Shaft & Wheel

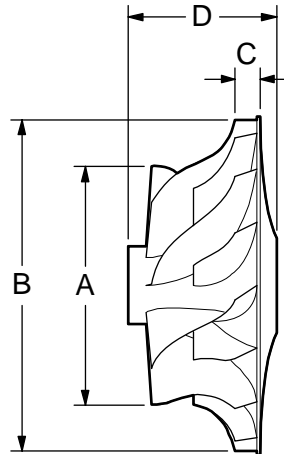


Melett Part No.	To replace....	(A) Inducer Ø mm's	(B) Exducer Ø mm's	(C) Tip width mm's	(D) Shaft OD	Shaft Slender Standard	No. Blades
GT15							
1102-015-435	433165-1 & 7 434713-1 & 5 433298-1 & 30	41.4	35.2	7.2	7.9	Slender	9
1102-015-436	433298-32 434713-7 433298-4 433165-4	41.3	34.0	7.3	7.9	Slender	9
1102-015-437	433298-42 433158-1 433290-4	42.2	32.2	6.1	7.9	Slender	10
1102-015-438	707669-5/10	42.0	38.2	6.0	7.9	Slender	12
1102-015-439	Not known	39.0	33.2	5.5	6.5	Slender	11
GT17/18							
1102-017-435	704580-3	44.5	40.1	8.0	7.9	Straight	9
1102-017-436	434533-6&12	43.0	37.5	6.3	7.9	Slender	9
1102-017-438	434533-7&9	43.0	35.9	6.3	7.9	Slender	9
1102-017-439	704580-1	44.4	40.0	8.3	7.9	Slender	9
1102-017-440	434533-18	43.0	37.6	6.3	7.9	Straight	9
1102-017-441	434533-2	43.0	36.0	5.6	7.9	Slender	9
1102-017-442	434714-9	44.4	37.5	7.8	7.9	Straight	9
1102-017-443	717904-1	43.0	39.5	8.0	7.9	Slender	9
1102-017-444	434714-34	44.2	37.3	7.5	7.9	Slender	9
1102-017-445	434533-17	43.0	35.0	6.3	7.9	Slender	9
GT20/22							
1102-020-435	434883-1	47.1	38.7	8.0	7.9	Slender	9
1102-020-436	434883-3/17	47.1	38.7	8.0	7.9	Straight	9
1102-020-437	434883-15	47.3	40.0	8.5	7.9	Straight	9
1102-020-438	436504-4	46.9	38.5	6.3	7.9	Slender	12
1102-020-439	434882-4	49.1	42.7	8.5	7.9	Straight	9
GT25							
1102-025-435	740244-1	49.9	46.0	9.4	7.9	Straight	9
1102-025-436	434717-28/33	51.3	46.9	9.4	7.9	Straight	9

GT / VNT 15-25 Type

Major Replacement Parts - Detail

Compressor Wheel



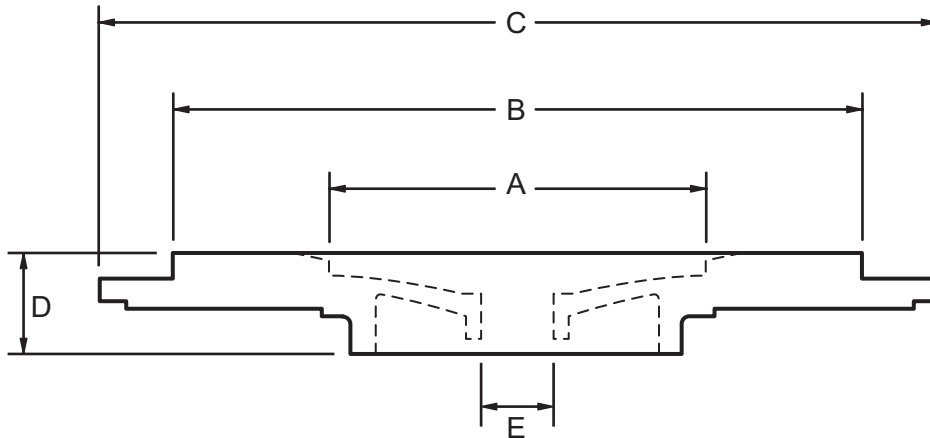
OE Number	Melett Part No.	(A) Inducer ϕ mm's	(B) Full ϕ mm's	(C) Tip width mm's	(D) Total Hub Length	No. of Blades	Wheel Style
434812-0001	1102-015-400	33.0	49	4.0	22.2	6/6 Split	S/Back
436131-0002	1102-015-403	38.6	52	5.0	26.0	6/6 Split	S/Back
436131-0019/21	1102-015-405	36.6	52	5.0	26.0	6/6 Split	S/Back
436132-0002	1102-015-404	36.4	49	4.8	24.8	6/6 Split	S/Back
436132-0003	1102-015-402	34.6	49	4.5	24.8	6/6 Split	S/Back
436334-0003	1102-015-402	34.6	49	4.5	24.8	6/6 Split	S/Back
701374-0001/6	1102-025-400	41.4	56	5.5	29.3	6/6 Split	S/Back
702489-0002/9	1102-015-401	34.7	49	3.7	24.8	6/6 Split	S/Back
703925-0003	1102-015-402	34.7	49	4.5	24.8	6/6 Split	S/Back
702492-0001	1102-015-406	38.7	52.0	4.0	26.0	6/6 Split	S/Back
702489-0001/5	1102-015-407	36.4	49.0	4.1	25.0	6/6 Split	S/Back
N/A	1102-020-400	36.8	52.0	5.5	29.3	6/6 Split	S/Back

Many more GT15-25 major parts are planned for release throughout 2008 – please contact Melett Sales for latest availability

GT / VNT 15-25 Type

Major Replacement Parts - Detail

Seal / Back Plates



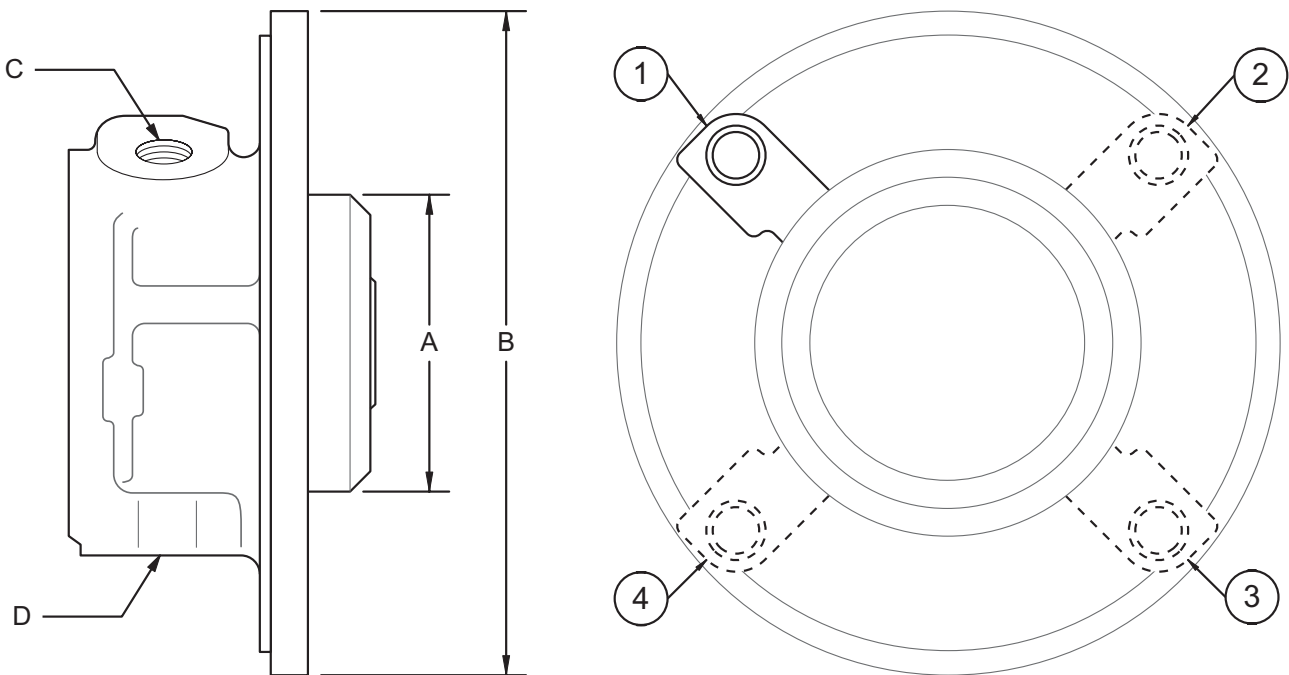
To replace ...	Melett Part No.	C/W Recess A	C/C Diameter B	OD (mm) C	Thickness D	P Ring Bore E	Also
433254-0005	1102-015-305	45	84	95	12	9	
434813-0001	1102-015-306	50	90	99	12	9	
435787-0001	1102-015-304	45	84	95	11.5	9	
700593-0001	1102-015-308	45	84	95	12	10	
700593-0003	1102-015-301	50	91	111	12	10	
700593-0006	1102-015-300	50	90	99	12	10	
701335-0001	1102-015-307	54	96	112	12	10	
701335-0003	1102-015-302	53	100	124	12	10	
701335-0008	1102-015-303	47	100	120	12	10	
703682-0014	1102-015-309	50	118	124	12	10	436399-0022

More GT15-25 major parts are planned for release throughout 2008 – please contact Melett Sales for latest availability.

GT / VNT 15-25 Type

Major Replacement Parts - Detail

Bearing Housings



Melett Number	OE Number	A Dia (mm)	B Dia (mm)	C Oil Inlet	D Oil Outlet	Lever Position	Description
1102-015-450	433275-02	N/A	N/A	M10 X 1.0	12.0mm	N/A	Bearing Housing GT15 Oil Cooled
1102-017-450	433145-05	tba	tba	tba	tba	tba	In Development
1102-017-451	454765-01	tba	tba	tba	tba	tba	In Development
1102-017-452	722282-21	51.0	113.0	M10 x 1.0	M6 x 2	3	In Stock
1102-017-453	722282-12	tba	tba	tba	tba	tba	In Development
1102-017-454	722282-61	tba	tba	tba	tba	tba	In Development

Heatshield/ Disk Shroud and Actuators overleaf.....

GT / VNT 15-25 Type

Major Replacement Parts - Detail

Heatshield/ Disk Shroud

Melett Number	OE Number	Description
1102-015-340	443768-0003	VNT20
1102-015-341	434890-0001	GT20 Ford
1102-015-342	433112-0001	VNT17

Actuators

Melett Number	OE Number	Description
1102-017-380	434855-0001	Actuator VNT
1102-017-381	434855-0004/15	Actuator VNT
1102-017-382	434855-0012	Actuator VNT
1102-017-383	723455-0005	Actuator VNT

Garrett GT20 / GT25 'T2 Style' Type Turbos

The following GT20/25 turbos are based upon the T2 CHRA design and therefore use T2 repair kits as shown. For kit details and full kit options, see T2 section.

OE Turbo Number	CHRA	Repair Kit	Turbo Model	Melett Repair Kit
454110-0001	443854-0150	T2 Short Bearing	GT25C	1100-020-758
454111-0001	443854-0121	T2 Short Bearing	GT25C	1100-020-758
454127-0001	443854-0150	T2 Short Bearing	GT25C	1100-020-758
454145-0001	443854-0150	T2 Short Bearing	GT20C	1100-020-758
454145-0002	443854-0150	T2 Short Bearing	GT25C	1100-020-758
454156-0001	443854-0204	T2 Short Bearing	GT25C	1100-020-758
454169-0001	443854-0150	T2 Short Bearing	GT20	1100-020-758
454169-0001	443854-0150	T2 Short Bearing	GT25C	1100-020-758
454169-0002	443854-0150	T2 Short Bearing	GT25C	1100-020-758
454184-0001	443854-0149	T2 Short Bearing	GT2538C	1100-020-758
454193-0001	443854-0150	T2 Short Bearing	GT2538C	1100-020-758
454193-0001	443854-0150	T2 Short Bearing	GT25C	1100-020-758
454193-0002	443854-0157	T2 Short Bearing	GT25C	1100-020-758
454203-0001	443854-0150	T2 Short Bearing	GT25C	1100-020-758
454207-0001	443854-0150	T2 Short Bearing	GT2538C	1100-020-758
700716-0003	431876-0109	T2 Short Bearing	GT25	1100-020-758
700716-0005	431876-0109	T2 Short Bearing	GT25	1100-020-758
700716-0005	431876-0109	T2 Short Bearing	GT25	1100-020-758
703325-0001	443854-0172	T2 Short Bearing	GT25C	1100-020-758
703325-0001	443854-0172	T2 Short Bearing	GT25C	1100-020-758

Garrett GT30 / GT32 / GT35 Type Turbos

Common Service Parts

GT30/32/35 Type

Common Service Parts

Illustration for this turbo is not currently available – please contact Melett Engineers for latest availability of technical information.

GT30/32/35 Type

Repair Parts & Service Kits

Key	Part Description	Melett Number	Replace OE No.	Qty Per Turbo	Minor Kit	Major Kit
					1102-032-750	1102-032-751
	Journal Bearing Std/Std	1102-032-100	448283-0002	2	2	2
	O-Ring (Brg Hsg) Sq. Sec.	1102-032-150	400424-0010	1	1	1
	O-Ring (Comp Cover)	1102-032-155	403069-0077	1	1	1
	Piston Ring (Turb)	1102-032-160	408049-0013	1	1	1
	Piston Ring (Comp)	1102-032-170	403818-0009	1	1	1
	Thrust Collar GT32	1102-032-200	448845-0001	1		1
	Thrust Bearing (270 degree)	1102-032-320	448261-0001	1	1	1
	Oil Seal Washer (Doughty)	1102-032-580	449386-0001	1	4	4
	Bolt (C/Cover) Lock patch	1100-045-610	400724-0810	6	6	6
	Turbine Bolt (B16 UHT)	1102-040-620	447571-0820	8	8	8
	Clamp Plate	N/A	443136-0001	8		
	Bearing Spacer	N/A	447480-0002	2		
						Similar to... 709147-1

Oversize Repair Parts Available

Journal Bearings		
Original Garrett Part Number (Std/Std): 448283-0002		
Oversize's Available		Part Number
OD +.010"	ID -.010"	1102-032-120
OD +.010"	ID Std	1102-032-124
OD Std	ID -.010"	1102-032-127

Piston Rings	
Oversize's Available	Part Number
Turbine End	
Oversize Piston Rings are not available at time of printing – please contact Melett Sales for latest availability.	

Garrett GT37 / GT40 Type Turbos

Common Service Parts
Oversize Service Parts

GT37/40 Type

Common Service Parts

Illustration for this turbo is not currently available – please contact Melett Engineers for latest availability of technical information.

GT37/40 Type

Repair Parts & Service Kits

Key	Part Description	Melett Number	Replace OE No.	Qty Per Turbo	Minor Kit 1102-040-750	Major Kit 1102-040-751
	Journal Bearing Std/Std	1102-040-100	448295-0004	2	2	2
	O-Ring Seal Plate (Sq. section)	1102-040-150	400424-0006	1	1	1
	O-Ring (Comp Cover)	1102-040-155	403069-0146	1	1	1
	Piston Ring (Turb End)	1102-042-160	408049-0023	1	1	1
	Piston Ring (Comp End)	1102-040-170	403818-0046	1	1	1
	Thrust Collar GT37/40	1102-040-200	448957-0001	1		1
	Thrust Bearing GT37/40	1102-040-320	448320-0001	1	1	1
	Bolt (C/Cover)	1100-045-610	400627-0810	8	8	8
	Bolt (Seal Plate & T-Hsg)	1102-040-620	447571-0820	8	8	8
	Clamp Plate	N/A	410987-0000	4		
	Bearing Spacer	N/A	448302-0001	1		
					Similar to 709152-0001	Similar to 472559-0001

Oversize Repair Parts Available

Journal Bearings		
Original Garrett Part Number (Std/Std): 448295-0004		
Oversize's / Undersize's Available		Part Number
OD +.010"	ID -.010"	1102-040-120
OD +.010"	ID Std	1102-040-124
OD Std	ID -.010"	1102-040-127

Piston Rings		
Original Garrett Part Number (Turb End): 408049-0023		
Oversize's Available		Part Number
Turbine End		
OD +.010"	Wth Std	1102-042-180
OD Std	Wth +.010"	1102-042-181
OD +.010"	Wth +.020"	1102-042-182
OD +.010"	Wth +.010"	1102-042-184

Garrett GT42 / GT45 Type Turbos

Common Service Parts
Oversize Service Parts

GT42/45 Type

Common Service Parts

Illustration for this turbo is not currently available – please contact Melett Engineers for latest availability of technical information.

GT42/45 Type

Repair Parts & Service Kits

Description	Melett Number	Replace OE Number	Qty per turbo	Minor Kit GT42/45 1102-042-750	Major Kit GT42/45 1102-042-751	Major Kit GT4294 DAF 1102-042-754
Journal Bearing Std/Std	1102-042-100	448572-0002	2	2	2	2
O Ring (Seal Plate)	1100-045-150	400424-0009	1	1	1	1
O Ring Comp Cvr (GT42)	1100-045-155	403069-0069	1	1	1	
O Ring Comp Cvr (GT45)	1102-045-155	403069-0161	1	1	1	1
Piston Ring (Turb)	1102-042-160	408049-0023	1	1	1	1
Piston Ring (Comp)	1100-045-170	403818-0047	1	1	1	1
Thrust Collar GT42	1102-042-200	446451-0004	1		1	
Thrust Collar GT45	1102-045-200	446451-0001	1			
Thrust Collar GT4294	1102-042-201	446451-0010	1			1
Thrust Bearing	1102-042-320	443686-0001	1	1	1	
Thrust Bearing	1102-042-321	448764-0001	1			1
Bolt (T/Hsg)	1100-045-600	443876-0620	4	4	4	4
Bolt (C/Cover) Patched	1100-045-610	400627-0810	8	8	8	8
Screw (Thrust Brg)	1100-045-620	400964-0410	3	3	3	3
Lock Nut (band clamp)	1100-120-645	400580-0000	1	1	1	1
Clamp Plate (GT42)	N/A	410987-0000	4			
Clamp Plate (GT45)	N/A	448920-0001	4			
Doughty Washer	1100-045-580	434097-0001	4	4	4	4
				Similar to 709153-0001	Inc. Collar 446451-4	Similar to 709153-0005

Oversize Repair Parts Available

Journal Bearings		
Original Garrett Part Number (Std/Std): 448572-0002		
Oversize's / Undersize's Available		Part Number
OD +.010"	ID -.010"	1102-042-120
OD +.010"	ID Std	1102-042-124
OD Std	ID -.010"	1102-042-127

Piston Rings		
Original Garrett Part Number (Turb End): 408049-0023		
Oversize's Available		Part Number
Turbine End		
OD +.010"	Wth Std	1102-042-180
OD Std	Wth +.010"	1102-042-181
OD +.010"	Wth +.020"	1102-042-182
OD +.010"	Wth +.010"	1102-042-184

Garrett GT50 BTG UTV Type Turbos

Common Repair Parts

GT50 / BTG / TV85 Type

Component Parts Common

Illustration for this turbo is not currently available – please contact Melett Engineers for latest availability of technical information.

GT50 / BTG / UTV Type

Repair Parts & Service Kits

These models are currently under development in 2008 – please contact Melett Sales for latest availability.

The following parts are available from stock as shown.

GT50

Part Description	MELETT Part Number	OE Part Number	Qty Per Turbo
Journal Bearing Std/Std	1101-285-100	448508-0001	2
Piston Ring Turb End	1100-180-160	408049-0008	1

BTG / UTV / TV75/85

Key	Part Description	MELETT Part Number	OE Part Number	Qty Per Turbo	Repair Kit 1101-085-750
6	Bearing Wide, Std	1101-285-100	448508-0001	2	2
6	Bearing Wear Washer	1100-180-190	407135-0000	2	2
7	Snap Ring	1100-180-140	400408-0000	3	3
9	Thrust Bearing	1102-042-321			1
11	Piston Ring 0.687" (C)	1100-045-170	403818-0047	1	1
12	Piston Ring, 0.823" (T)	1100-045-160	403818-0030	1	
12	Piston Ring, (T)	1101-285-160	408049-0015	1	
12	Piston Ring, 1.02" (T)	1100-180-160	408049-0008	1	1
15	V-Band Clamp (C)	N/A			
16	V-Band Clamp (T)	N/A			
19	Shaft Nut, 3/8"-24	1100-180-350	400768-0013	1	1
20	Bolt. Diffuser			4	
20	Screw (T-Brg)	1100-045-620	400964-0410		3
23	"O" Ring, Seal Plate	1100-040-150	400424-0000	1	1
				from OE kit 700468-0001	Similar to 468267-10

Note: Piston Ring 408049-0015 is dimensionally the same as the T18/GT50 piston ring 408049-0008 but is manufactured from higher temp M2 stainless. Make sure the correct ring is used as they are not backward interchangeable.