

Engine and Related Parts

[01 WX engine block.pdf](#)

[02 Water Pump.pdf](#)

[03 Vacuum Hoses.pdf](#)

[04 Turbo Hoses and Intercooler.pdf](#)

[05 Vacuum Hoses for Diff Lock.pdf](#)

[06 Radiator, Reservoir and Plumbing.pdf](#)

[07 Radiator Fan and Shrouds.pdf](#)

[08 Power Steering Pump.pdf](#)

[09 Piston and Rings.pdf](#)

[10 Oiling Pickup and Filter.pdf](#)

[11 Oil pump housing.pdf](#)

[12 Oil Pan and Fittings on Block.pdf](#)

[13 Intake Manifold and throttle body.pdf](#)

[14 Intake Idle and Hookups.pdf](#)

[15 Injector cooling Fan and duct.pdf](#)

[16 Gasket Kits.pdf](#)

[17 Crankshaft, pulley and Flywheel.pdf](#)

[18 Clutch and Pressure Plate.pdf](#)

[19 CIS fuel lines.pdf](#)

[20 Aux Radiator.pdf](#)

[21 Airbox and CIS fuel distributor.pdf](#)

[22 10V wastegate, turbo and lines.pdf](#)

[23 10V timing belt and Covers.pdf](#)

[24 10V Oil Cooler.pdf](#)

[25 10V Crankcase Vent.pdf](#)

[26 10V Cam, Valves and Lifters.pdf](#)

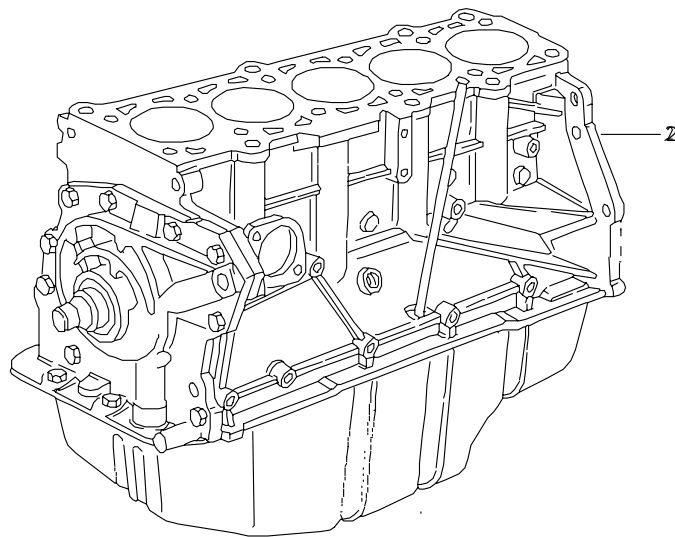
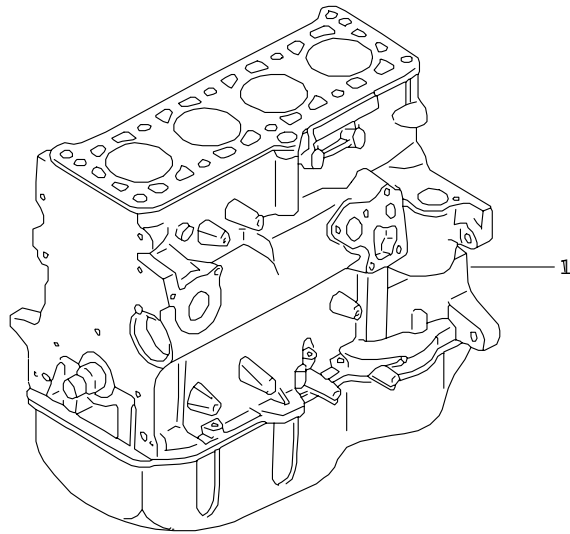
[27 10V Cam Cover.pdf](#)



ETKA



Model	Year	MG:	SG:	Illustration	Restrictions	Update		
QUAT	83	1	00	1-00		525	21:09	18.04.2005



AU 100 qu 1 - 84 AU 80/90 qu 1 - 84



ETKA



Model	Year	MG:	SG:	Illustration	Restrictions	Update		
QUAT	83	1	00	1-00		525	21:09	18.04.2005

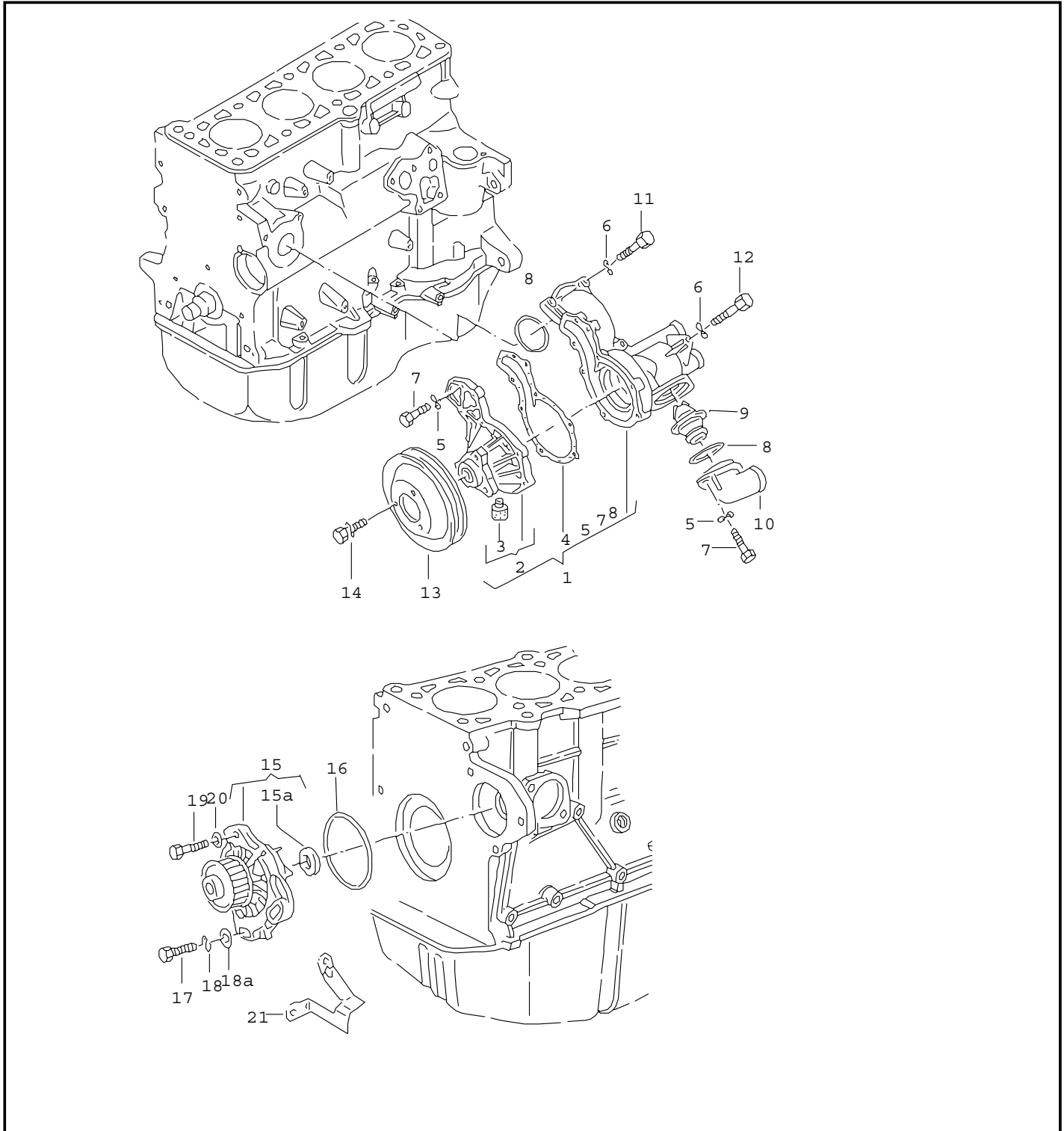
Pos	Part Number	Name	Remarks	Qty	Model
(2)	035 100 104 D	short engine with crankshaft, pistons, oil pump and oil sump short engine - - - E N D - - -	119 KW 2.2ltr.	1	WX



ETKA



Model	Year	MG:	SG:	Illustration	Restrictions	Update		
QUAT	83	1	21	10-00		525	21:33	18.04.2005





ETKA



Model QUAT	Year 83	MG: 1	SG: 21	Illustration 10-00	Restrictions	Update 525	21:33	18.04.2005
---------------	------------	----------	-----------	-----------------------	--------------	---------------	-------	------------

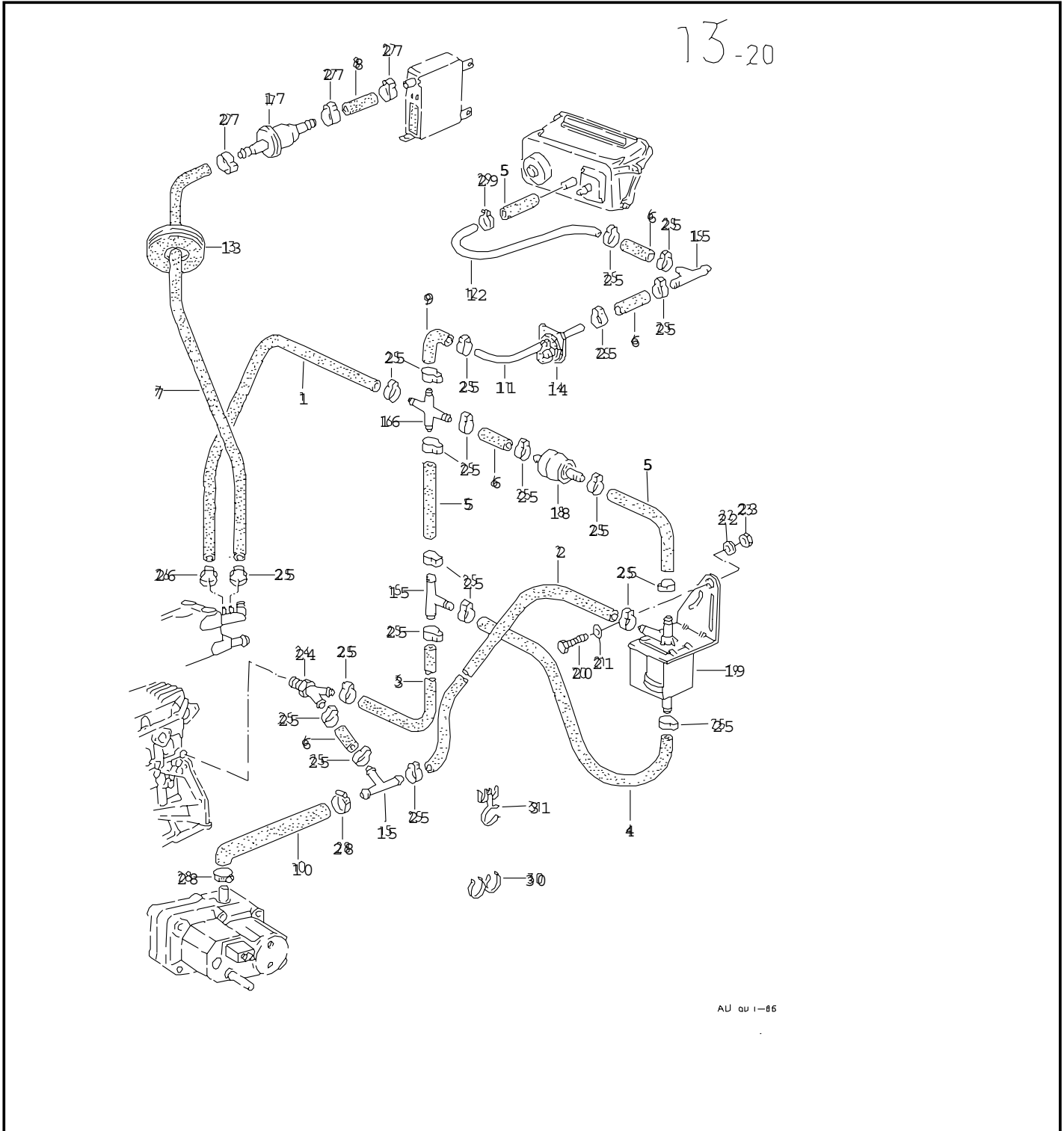
Pos	Part Number	Name	Remarks	Qty	Model
		water pump			WX
15	#035 121 004 AX	water pump with gasket		1	
15A	051 121 017	friction ring		1	
16	* 035 121 043	round seal	98X4	1	
(16)	069 121 043	sealing washer	98X5	1	
17	N 014 715 4	bolt, with hex. socket hd.	M8X45	2	
18	N 012 241 10	spring washer	B8X15X0,8	2	
18A	N 015 401 3	washer	8,4X21X4	2	
19	N 010 247 8	screw, hex. hd.	M8X35	1	
20	N 011 670 16	washer	8,4X24X2	1	
		- - - E N D - - -			



ETKA



Model	Year	MG:	SG:	Illustration	Restrictions	Update		
QUAT	83	1	33	13-20		525	21:35	18.04.2005





ETKA



Model QUAT	Year 83	MG: 1	SG: 33	Illustration 13-20	Restrictions	Update 525	21:35	18.04.2005
---------------	------------	----------	-----------	-----------------------	--------------	---------------	-------	------------

Pos	Part Number	Name	Remarks	Qty	Model
		vacuum hoses with connecting parts for pneumatic differential lock			
-	N 020 353 5	hose in coils of 5m 'order qty. 5'	3,5X2	*	
1		shorten to:	565MM	1	
-		shorten to:	560MM	1	
(3)		shorten to:	450MM	1	
5		shorten to:	80MM	X	
6		shorten to:	40MM	X	
-		shorten to:	245MM	1	
-	N 900 996 01	hose in coils of 5m 'order qty. 5'	5,5X3	*	
		also use:	N 100 497 01	X	
7		shorten to:	330MM	1	
8		shorten to:	330MM	1	
-	N 100 497 01	retaining clip	12,6X6X0,8	X	
10	035 133 647	hose		1	
(10)	035 133 648	vacuum hose		1	
-	N 020 139 1	tube in coils of 5m 'order qty. 5'	4X1	*	
11		shorten to:	900MM	1	
12		shorten to:	245MM	1	
13	803 611 751	grommet	22/3	1	
14	893 971 863 C	grommet	31	1	
15	113 201 943 B	t-piece	4/4/4	3	
(15)	321 611 813	t-piece	12/12/4,3	1	
(15)	056 129 971	y-piece	4/4/4	1	
(16)	433 862 193	y-piece		1	
17	055 131 527	fuel condenser		1	



ETKA



Model QUAT	Year 83	MG: 1	SG: 33	Illustration 13-20	Restrictions	Update 525	21:35	18.04.2005
---------------	------------	----------	-----------	-----------------------	--------------	---------------	-------	------------

Pos	Part Number	Name	Remarks	Qty	Model
24	055 131 851 C	thermo-pneumatic valve		1	
25	311 133 343 A	retaining clip	9	X	
27	111 127 537 A	clip		3	
28	N 102 582 01	clamp	AL12-22	2	
29	N 024 399 2	clamp	A7X8	1	
30	063 133 687 A	holder		1	
(31)	443 957 818 C	tie wrap	7X273-8	X	
-	811 971 849	cable holder	8/9	1	
-	7M0 955 961 B	tube	5X1X6000MM	*	
-		shorten to:	1050MM	1	
		- - - E N D - - -			



ETKA



Model QUAT	Year 83	MG: 1	SG: 45	Illustration 20-10	Restrictions	Update 525	21:38	18.04.2005
---------------	------------	----------	-----------	-----------------------	--------------	---------------	-------	------------

Pos	Part Number	Name	Remarks	Qty	Model
		charge air cooler pressure hose			WX
1	035 145 805	charge air cooler		1	
2	431 121 273 B	bonded rubber mounting		2	
3	N 012 241 10	spring washer	B8X15X0,8	4	
4	N 011 008 30	hex. nut	M8	4	
5	857 145 813	support		1	
6	N 010 287 3	screw, hex. hd.	M6X16	1	
7	N 011 524 23	washer	A6,4X12,5X1,6	2	
8	N 011 006 24	hex. nut	M6	1	
9	803 121 275 A	bonded rubber mounting		1	
10	N 012 226 5	spring washer	B6X12X0,5	2	
11	N 011 006 24	hex. nut	M6	2	
15	035 145 746 C	pressure hose		1	
16	N 024 522 3	clamp	LA60-80	3	
17	N 024 504 4	clamp	LC40-60	1	
18	035 145 746 B	pressure hose		1	
19	N 024 518 3	clamp	AL70-90	1	
20	035 145 747 C	hose		1	
21	N 024 505 4	clamp	LC50-70	1	
22	035 145 747 H	hose		1	
23	035 145 849 C	connecting pipe		1	
		- - - E N D - - -			

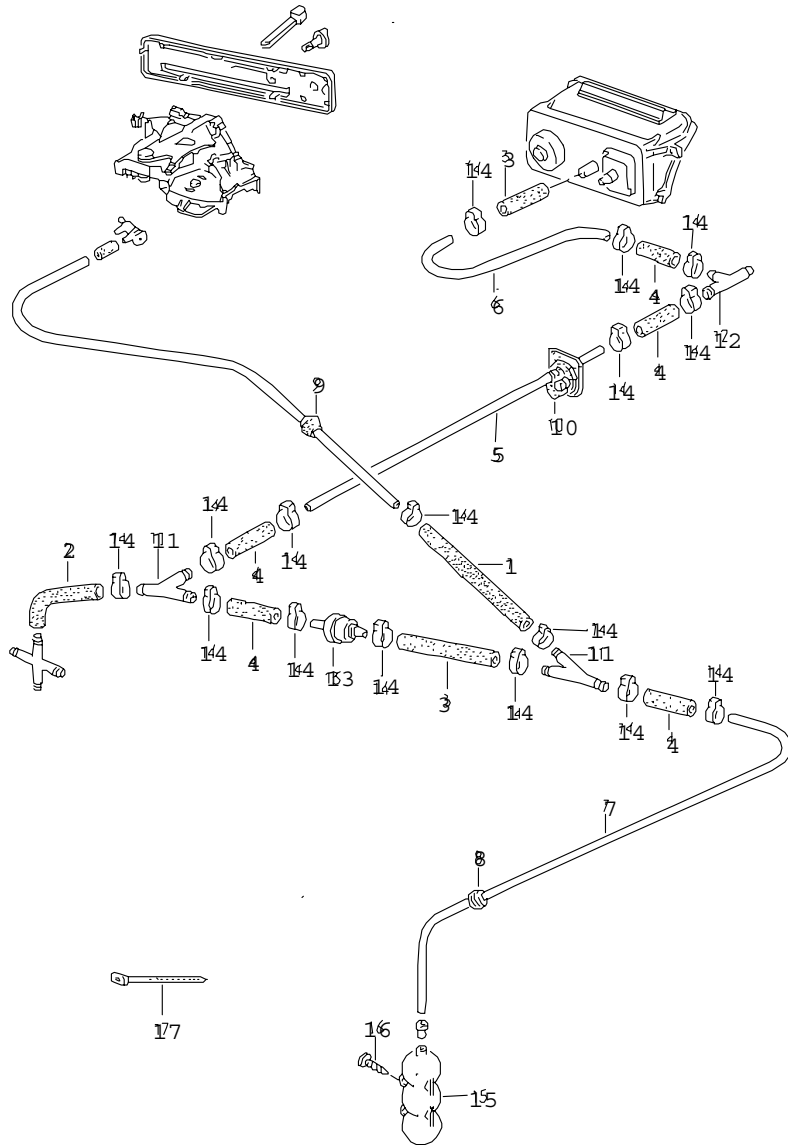


ETKA



Model	Year	MG:	SG:	Illustration	Restrictions	Update		
QUAT	83	1	33	13-30		525	21:35	18.04.2005

13-30



AU qu 1-85



ETKA



Model QUAT	Year 83	MG: 1	SG: 33	Illustration 13-30	Restrictions	Update 525	21:35	18.04.2005
---------------	------------	----------	-----------	-----------------------	--------------	---------------	-------	------------

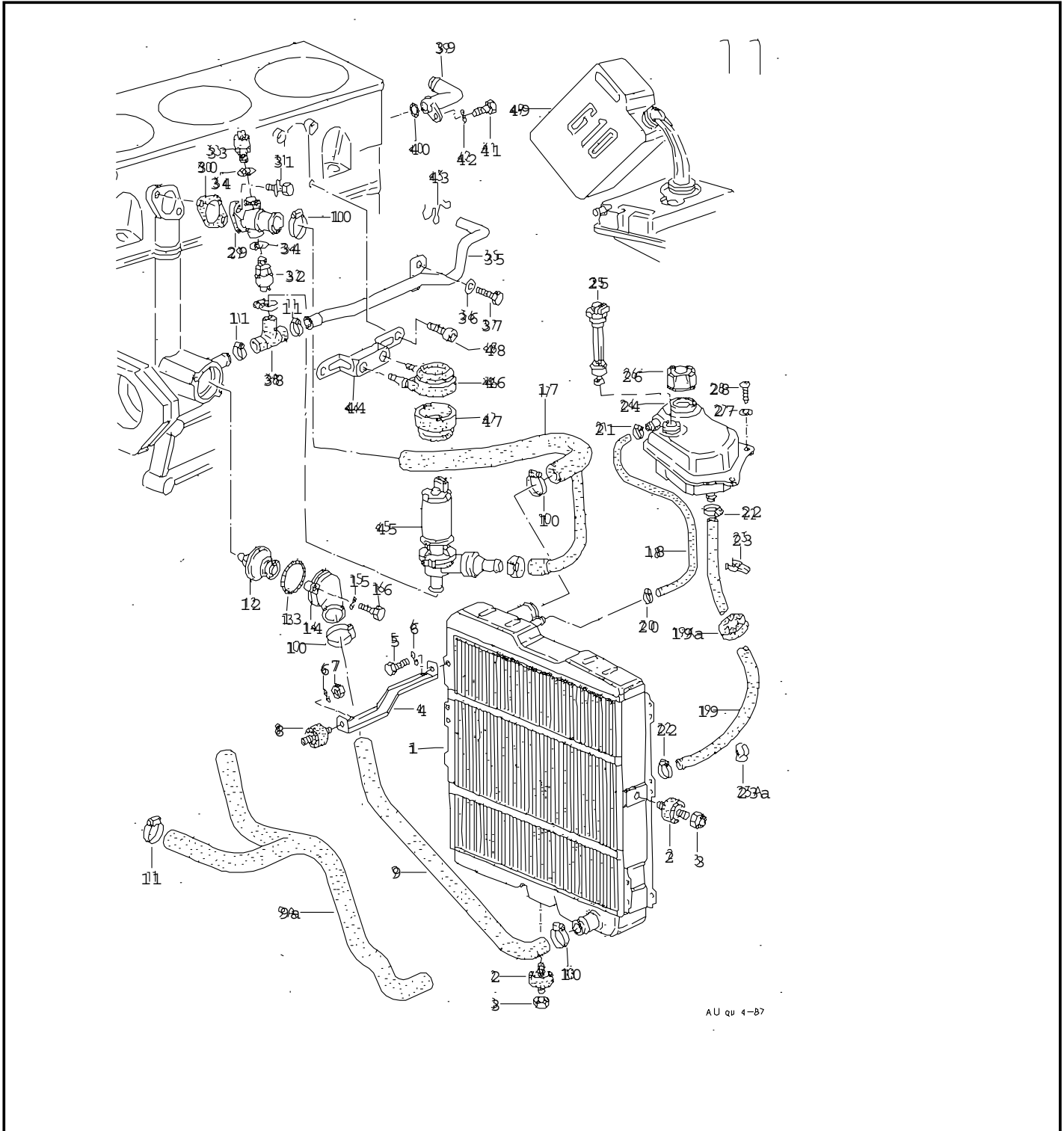
Pos	Part Number	Name	Remarks	Qty	Model
		vacuum hoses with connecting parts for pneumatic differential lock			AIR CONDIT.
-	7M0 955 961 B	tube	5X1X6000MM	*	
7		shorten to:	1050MM	1	
8	803 201 231 A	grommet		1	
-	171 971 913	grommet	12,5	1	
9	803 959 843	grommet	12,5/4	1	
10	893 971 863 C	grommet	31	1	
11	433 862 193	y-piece		2	
12	113 201 943 B	t-piece	4/4/4	1	
13	433 862 117	check valve		1	
14	311 133 343 A	retaining clip	9	16	
15	058 131 541	vacuum tank		1	
16	N 013 969 4	tapping screw, fill. hd.	B4,8X16	2	
17	N 906 661 01	tie wrap	4,5X200	3	
		- - - E N D - - -			



ETKA



Model	Year	MG:	SG:	Illustration	Restrictions	Update		
QUAT	83	1	21	11-00		525	21:34	18.04.2005





ETKA



Model QUAT	Year 83	MG: 1	SG: 21	Illustration 11-00	Restrictions	Update 525	21:34	18.04.2005
---------------	------------	----------	-----------	-----------------------	--------------	---------------	-------	------------

Pos	Part Number	Name	Remarks	Qty	Model
		water cooling			WX
(1)	857 121 251 B	radiator		1	
2	857 121 273	bonded rubber mounting		1	
(2)	803 121 273	bonded rubber mounting		1	
3	N 909 083 01	shouldered hex. nut, self-locking	M8	2	
(3)	N 902 856 01	hex. nut	M10	1	
4	855 121 263	bracket		1	
5	N 905 293 01	screw, hex. hd.	M6X10	1	
6	N 012 226 5	spring washer	B6X12X0,5	2	
7	N 011 006 24	hex. nut	M6	1	
8	443 121 273 E	bonded rubber mounting		1	
9A	035 121 055 C	water hose		1	
10	N 024 507 7	clamp	AL32-50	4	
11	N 102 581 01	clamp	AL23-35	3	
12	069 121 113	thermostat	87C	1	
13	N 901 368 02	round seal	60X3,5	1	
14	035 121 121 B	cover		1	
15	N 012 226 5	spring washer	B6X12X0,5	2	
16	N 010 218 6	screw, hex. hd.	M6X25	2	
(17)	035 121 101 F	water hose		1	
-	443 121 107 A	hose in coils of 5m 'order qty. 5'	7X2,5	*	
18		shorten to:	360MM	1	
19	857 121 109 A	water hose F 85-E-900 001>>		1	
19A	811 121 451	protective ring		1	
20	N 024 528 1	clamp	LC8-12	1	
21	N 024 528 1	clamp	LC8-12	1	



ETKA



Model QUAT	Year 83	MG: 1	SG: 21	Illustration 11-00	Restrictions	Update 525	21:34	18.04.2005
---------------	------------	----------	-----------	-----------------------	--------------	---------------	-------	------------

Pos	Part Number	Name	Remarks	Qty	Model
22	N 905 618 01	clamp	AL16-28	2	
23	035 121 093 G	bracket for hose F >> 85-E-902 000		1	
(23)	035 121 093 K	bracket for hose F 85-F-900 001>>		1	
23A	035 121 093 H	bracket for hose		1	
24	811 121 407	reservoir for vehicles without electronic voice F >> 85-D-902 500		1	
(24)	857 121 403	reservoir F 85-E-900 001>>		1	
26	443 121 321	sealing cap		1	
27	N 011 665 3	washer	5,3X15X1,6	3	
28	N 013 975 5	tapping screw, fill. hd.	ST4,8X19	2	
(28)	N 013 972 9	tapping screw, fill. hd. F >> 85-D-902 500	ST4,8X25-C	1	
29	035 121 133 C	adapter F >> 85-D-902 500		1	
(29)	035 121 133 G	flange F 85-E-900 001>>		1	
30	052 121 091 A	gasket		1	
31	N 010 216 12	screw, hex. hd.	M6X18	2	
-	N 016 024 1	plug	M10X1	1	
33	049 919 501 B	temperature sender with switch	120C M10X1 2 pin white	1	
34	N 013 811 5	sealing washer	A10X13,5	2	
35	035 121 071 AH	water pipe		1	
36	N 011 525 13	washer	A8,4	1	
37	N 010 238 20	screw, hex. hd.	M8X15	1	
(38)	069 121 063 B	water hose F >> 85-E-901 500		1	



ETKA



Model QUAT	Year 83	MG: 1	SG: 21	Illustration 11-00	Restrictions	Update 525	21:34	18.04.2005
---------------	------------	----------	-----------	-----------------------	--------------	---------------	-------	------------

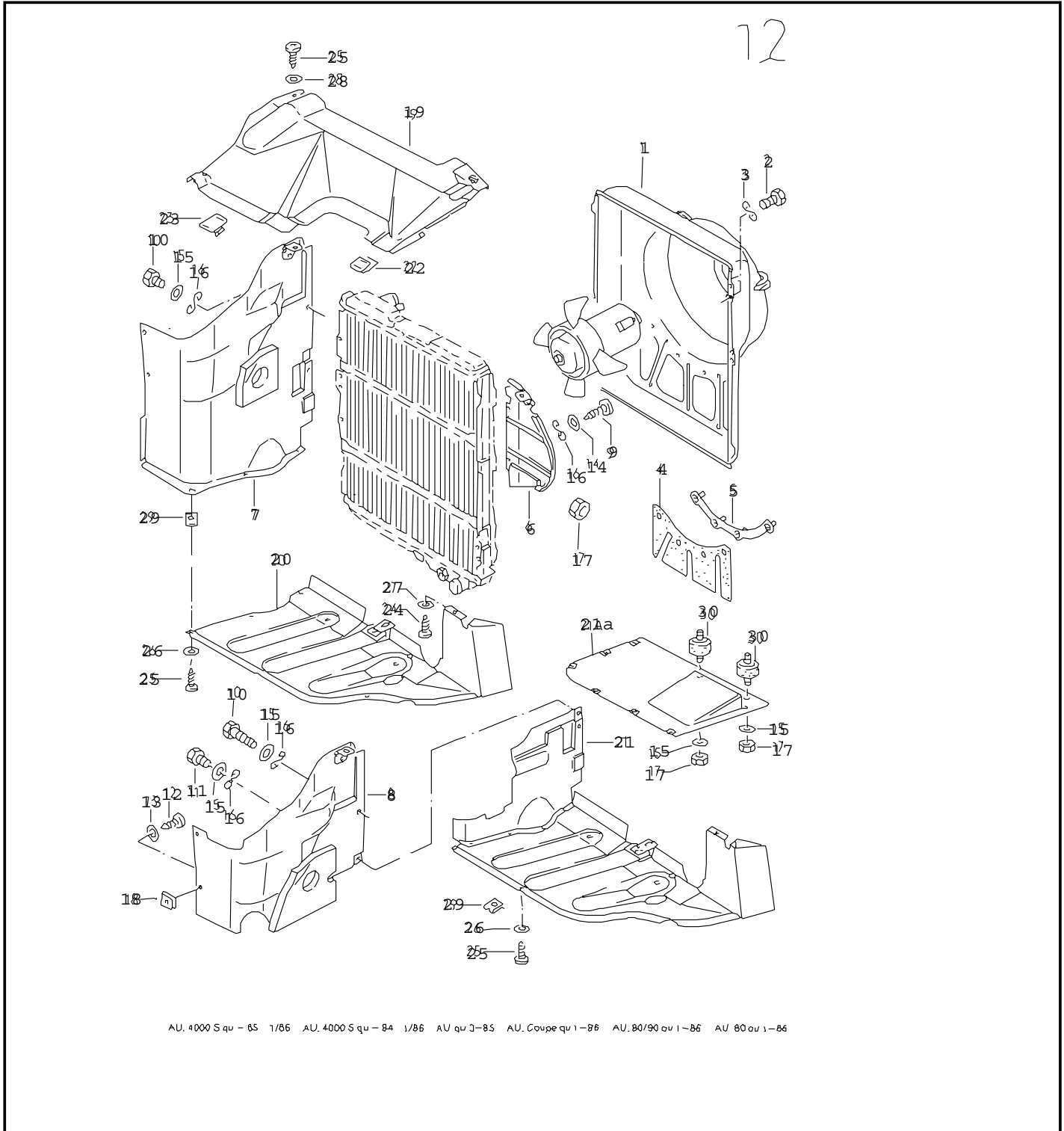
Pos	Part Number	Name	Remarks	Qty	Model
(38)	035 121 063 D	water hose F 85-F-900 001>>		1	
39	034 121 143 B	adapter		1	
40	N 900 351 03	round seal	21X3N	1	
41	N 014 707 4	bolt, with hex. socket hd.	M8X15	1	
42	N 012 241 10	spring washer	B8X15X0,8	1	
43	--- --- ---	no longer available			
49	G 011 A8C A1	coolant additive	1.5ltr.	1	
(49)	G 011 A8C A8	coolant additive	55ltr.	1	
		- - - E N D - - -			



ETKA



Model QUAT	Year 83	MG: 1	SG: 21	Illustration 12-00	Restrictions	Update 525	21:34	18.04.2005
---------------	------------	----------	-----------	-----------------------	--------------	---------------	-------	------------





ETKA



Model QUAT	Year 83	MG: 1	SG: 21	Illustration 12-00	Restrictions	Update 525	21:34	18.04.2005
---------------	------------	----------	-----------	-----------------------	--------------	---------------	-------	------------

Pos	Part Number	Name	Remarks	Qty	Model
		fan cowl air duct			WX
1	896 121 205	fan cowl		1	
2	N 010 208 5	screw, hex. hd.	M6X8	5	
3	N 012 226 5	spring washer	B6X12X0,5	5	
4	823 121 225	cap		1	
5	803 121 227	bracket		1	
6	811 121 281 A	air duct cardboard F >> 85-D-902 500	left	1	
(6)	811 121 283 B	air duct cardboard F 85-E-000 001>>	left	1	
8	857 121 282 F	air duct	right	1	
9	N 014 139 5	fillister hd. screw	M6X12	2	
10	N 010 212 26	screw, hex. hd.	M6X12	1	
11	N 010 215 27	screw, hex. hd.	M6X15	4	
-	N 044 419 2	stud	M6X15	1	
12	N 013 966 26	tapping screw, fill. hd.	4,2X13STC	8	
13	N 011 522 7	washer	A4,3X9X0,8	2	
14	N 011 524 23	washer	A6,4X12,5X1,6	X	
15	N 011 666 15	washer	6,4X18X1,6	4	
16	N 012 226 5	spring washer	B6X12X0,5	4	
17	N 011 006 24	hex. nut	M6	3	
(17)	N 011 183 12	hex. nut, self-locking	M6	4	
18	N 015 422 2	speed nut	ST4,2X17X11,3	X	
(18)	N 904 190 02	speed nut	M4X15X17,5	1	
-	N 010 261 3	screw, hex. hd.	M4X15	1	
19	811 121 293	air duct cardboard	upper	1	
21	857 121 329 B	air duct cardboard	lower	1	



ETKA



Model QUAT	Year 83	MG: 1	SG: 21	Illustration 12-00	Restrictions	Update 525	21:34	18.04.2005
---------------	------------	----------	-----------	-----------------------	--------------	---------------	-------	------------

Pos	Part Number	Name	Remarks	Qty	Model
21A	857 121 341	air duct for oil cooler	lower	1	
22	431 121 304 A	clip		1	
23	811 121 304	clip		1	
24	N 013 884 5	tapping screw,hex.hd.	4,8X13	1	
25	N 013 966 26	tapping screw, fill. hd.	4,2X13STC	2	
(25)	N 013 969 4	tapping screw, fill. hd.	B4,8X16	X	
-	N 038 601 1	nut,thread cutting	5X5,4	1	
-	N 014 710 7	bolt, with hex. socket hd.	M8X20	1	
26	N 011 522 7	washer	A4,3X9X0,8	4	
27	N 011 523 8	washer	A5,3X10X1	2	
28	N 011 664 4	washer	B4,3X12X1	2	
29	N 015 427 2	speed nut	B4,8X19,8X16,5	17	
30	443 121 273 E	bonded rubber mounting		2	
		- - - E N D - - -			

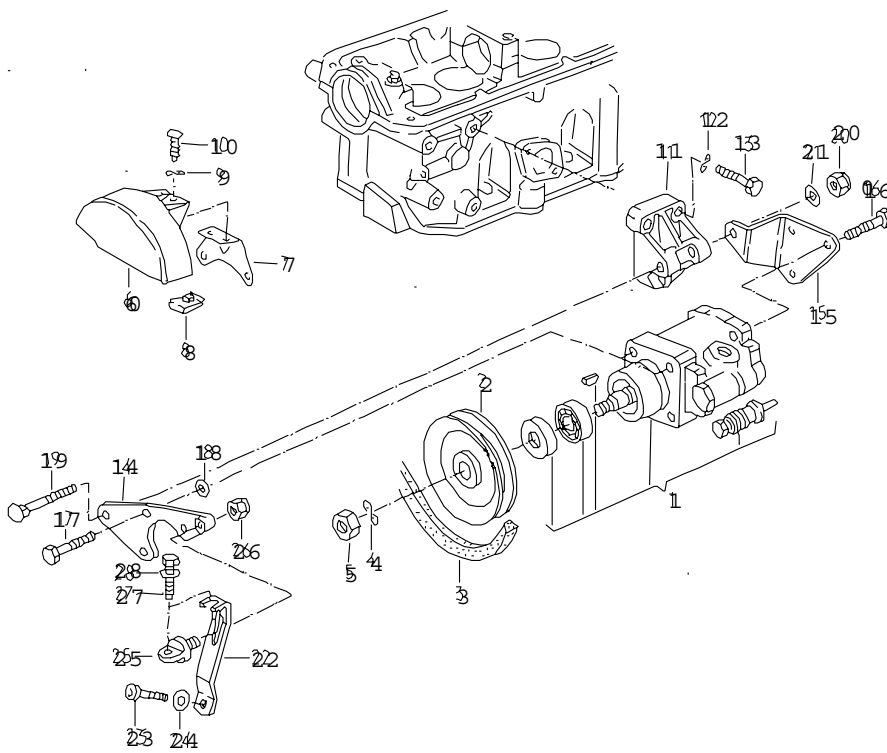


ETKA



Model	Year	MG:	SG:	Illustration	Restrictions	Update		
QUAT	83	1	45	19-20		525	21:38	18.04.2005

19-20



EP 46 2-89



ETKA



Model QUAT	Year 83	MG: 1	SG: 45	Illustration 19-20	Restrictions	Update 525	21:38	18.04.2005
---------------	------------	----------	-----------	-----------------------	--------------	---------------	-------	------------

Pos	Part Number	Name	Remarks	Qty	Model
		vane type pump for power steering			
1	#049 145 155 X	vane type pump		1	
-	035 198 049	set of seals for vane pump	049 145 155 X	1	
(2)	035 145 255 E	v-belt pulley		1	
(3)	035 260 849 C	v-belt	BT,5X992MM	1	
(4)	N 012 241 10	spring washer	B8X15X0,8	3	
(5)	N 014 706 7	bolt, with hex. socket hd.	M8X12	1	
6	035 145 295	cover plate F >> 85-H-902 400*		1	
7	035 145 297 A	support		1	
8	N 015 422 2	speed nut	ST4,2X17X11,3	2	
9	N 012 224 3	spring washer	B4X9X0,5	2	
10	N 013 965 5	tapping screw, fill. hd. F >> 85-H-902 400*	B4,2X9,5	2	
11	035 145 515 B	bracket for vane pump F >> 85-H-902 400*		1	
12	N 012 241 10	spring washer	B8X15X0,8	3	
13	N 010 340 4	screw, hex. hd.	M8X40	3	
14	035 145 519 B	bow F >> 85-H-902 400*	front	1	
15	035 145 531 H	bracket for vane pump F >> 85-H-902 400*	rear	1	
16	N 010 239 11	screw, hex. hd. F 85-B-901 298>>	M8X18 M8X18	3	
17	N 010 242 22	screw, hex. hd. F 85-B-901 298>> 85-H-902 400	M8X25	3	
18	N 015 401 3	washer F 85-B-901 298>> 85-H-902 400*	8,4X21X4	3	
20	N 022 146 4	hex. nut, self-locking	VM8	1	



ETKA



Model QUAT	Year 83	MG: 1	SG: 45	Illustration 19-20	Restrictions	Update 525	21:38	18.04.2005
---------------	------------	----------	-----------	-----------------------	--------------	---------------	-------	------------

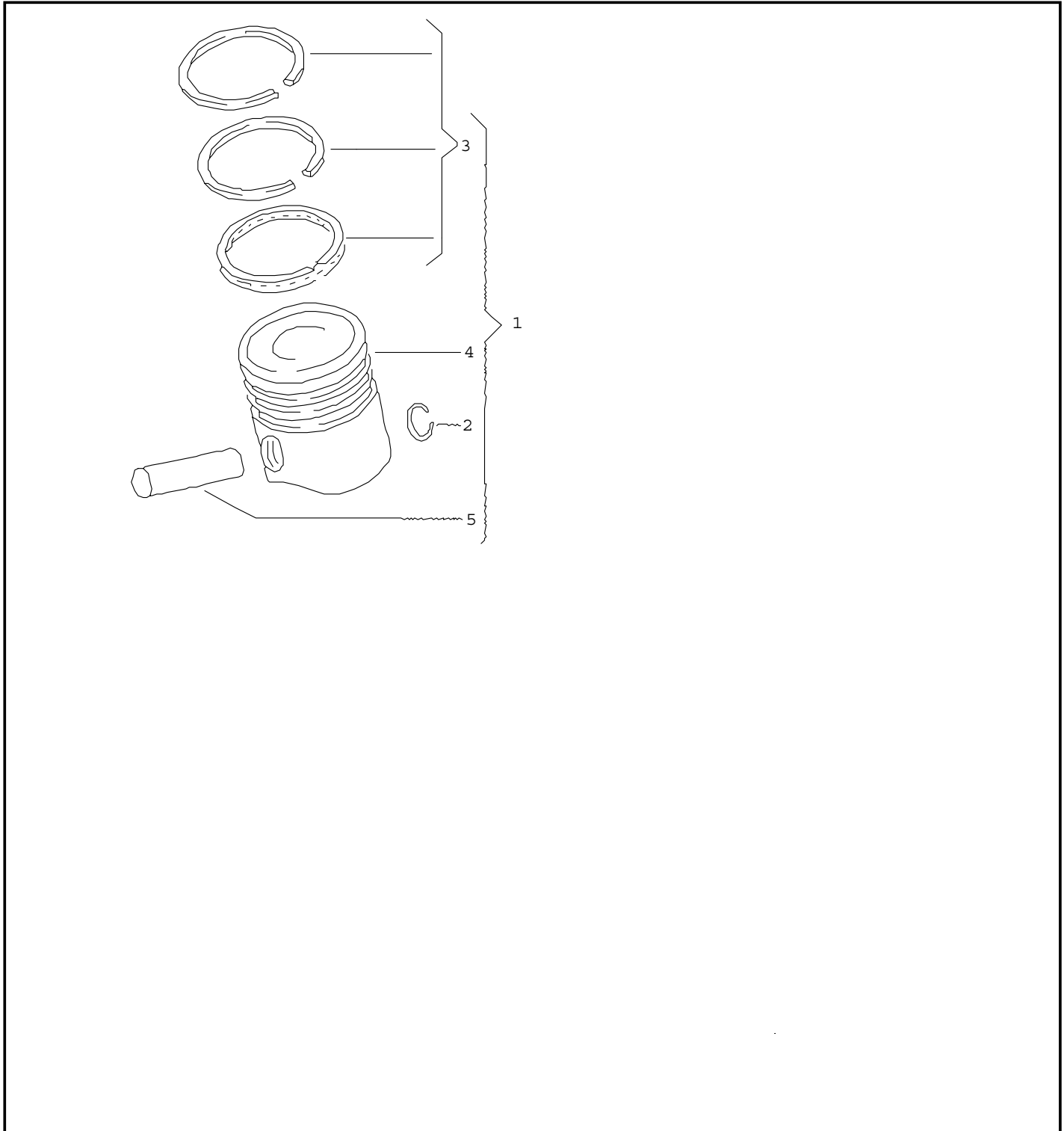
Pos	Part Number	Name	Remarks	Qty	Model
21	N 015 401 3	washer F 85-B-901 298>>	8,4X21X4	1	
(22)	035 145 545 H	support F 85-B-901 298>>		1	
23	N 014 717 2	bolt, with hex. socket hd.	M8X40	1	
24	N 015 401 3	washer	8,4X21X4	1	
25	035 145 541	eye bolt		1	
26	N 022 146 4	hex. nut, self-locking	VM8	1	
27	N 010 360 9	screw, hex. hd.	M8X60	1	
28	N 011 525 13	washer	A8,4	1	
- - - E N D - - -					



ETKA



Model	Year	MG:	SG:	Illustration	Restrictions	Update		
QUAT	83	1	07	6-00		525	21:31	18.04.2005





ETKA



Model QUAT	Year 83	MG: 1	SG: 07	Illustration 6-00	Restrictions	Update 525	21:31	18.04.2005
---------------	------------	----------	-----------	----------------------	--------------	---------------	-------	------------

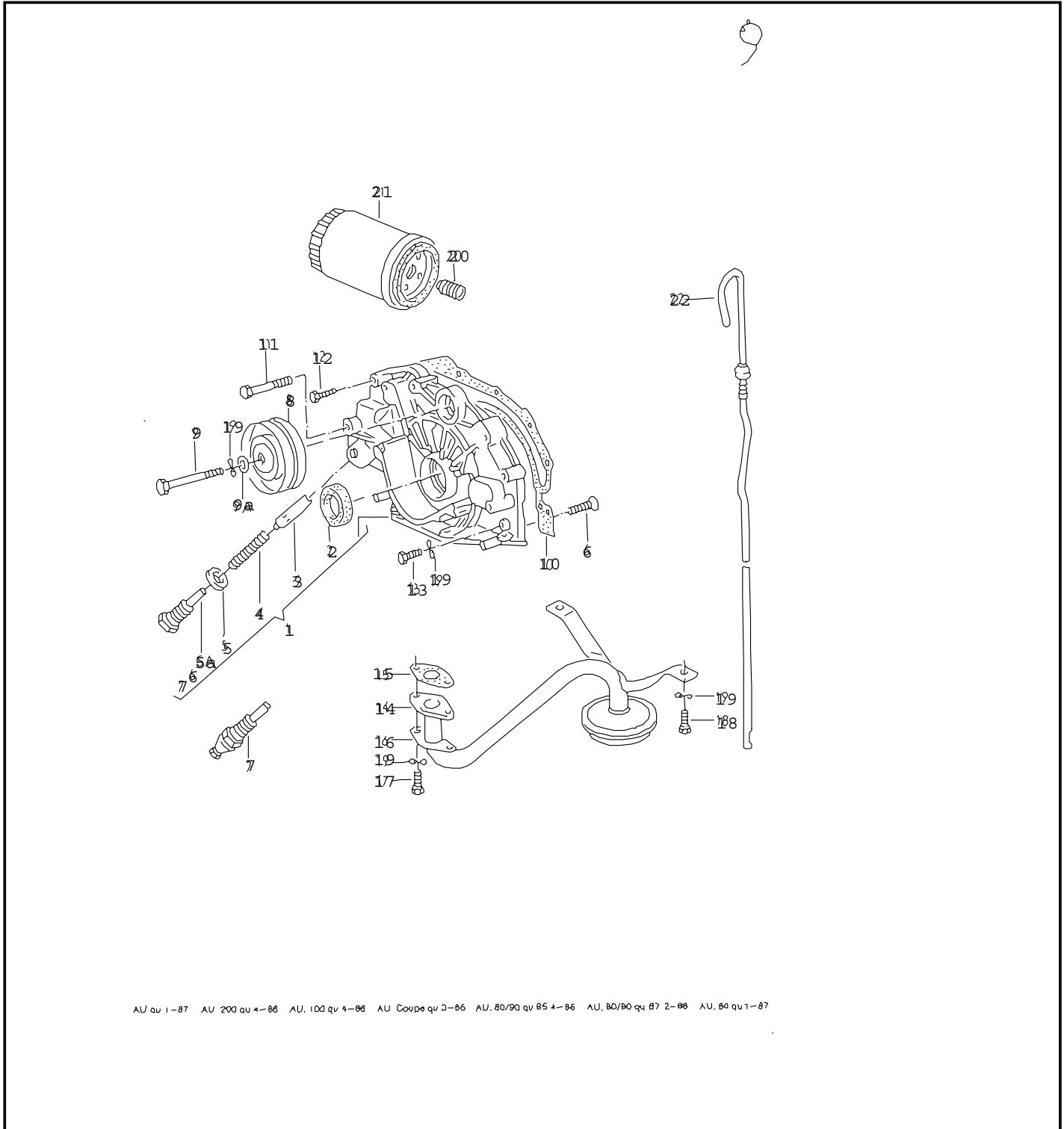
Pos	Part Number	Name	Remarks	Qty	Model
		piston piston ring			WX
(1)	035 107 065 F	piston complete	79,50	5	
(1)	035 107 071 F	piston complete (oversize)	79,75	5	
(1)	035 107 081 F	piston complete (oversize)	80,00	5	
(1)	035 107 091 F	piston complete (oversize)	80,50	5	
2	N 012 278 1	lock ring	C22X1,5	10	
3	049 198 151 F	1 set of piston rings	79,5	1	
(3)	049 198 153 F	1 set of piston rings (oversize)	79,75	X	
(3)	049 198 155 F	1 set of piston rings (oversize)	80	X	
(3)	049 198 157 F	1 set of piston rings (oversize)	80,5	X	
		- - - E N D - - -			



ETKA



Model	Year	MG:	SG:	Illustration	Restrictions	Update		
QUAT	83	1	15	9-00		525	21:32	18.04.2005



AU qu 1-87 AU 200 qu 4-86 AU 100 qu 4-86 AU Coupe qu 2-86 AU 80/90 qu 85 4-86 AU 80/90 qu 87 2-88 AU 80 qu 1-87



ETKA



Model QUAT	Year 83	MG: 1	SG: 15	Illustration 9-00	Restrictions	Update 525	21:32	18.04.2005
---------------	------------	----------	-----------	----------------------	--------------	---------------	-------	------------

Pos	Part Number	Name	Remarks	Qty	Model
		oil pump oil dipstick			WX
1	034 115 105 A	oil pump			
2	* 054 115 147 B	radial shaft seal	35X48X10	1	
3	035 115 411	piston F >> 85-E-901 500		1	
(3)	078 115 411	piston F 85-F-900 001>>		1	
4	035 115 421	pressure spring F >> 85-E-901 500		1	
(4)	069 115 421 B	pressure spring F 85-F-900 001>>		1	
5	N 013 832 1	sealing washer F >> 85-E-901 500	A18X22	1	
(5)	N 013 827 2	sealing washer F 85-F-900 001>>	A22X27	1	
5A	035 115 431	plug F >> 85-E-901 500		1	
(5)	069 115 431 B	plug	M22X1,5	1	
8	069 109 243 B	relay roller F >> 85-H-902 400	74MM	1	
9	N 010 368 1	screw, hex. hd.	M6X62	1	
10	034 115 189 A	gasket		1	
11	N 010 370 5	screw, hex. hd.	BM8X70	1	
12	N 010 220 12	screw, hex. hd.	M6X30	2	
		also use:	N 011 524 23	2	
-	N 011 524 23	washer	A6,4X12,5X1,6	2	
13	N 010 222 8	screw, hex. hd.	M6X22	X	
		also use:	N 012 226 5	X	
(14)	034 115 251 G	suction pipe			
		also use:	>>85-M-000200		
			034 115 427 C	1	
			034 115 273 A	1	
			035 115 285 A	1	
			054 115 221	1	



ETKA



Model QUAT	Year 83	MG: 1	SG: 15	Illustration 9-00	Restrictions	Update 525	21:32	18.04.2005
---------------	------------	----------	-----------	----------------------	--------------	---------------	-------	------------

Pos	Part Number	Name	Remarks	Qty	Model
-	054 115 221	restrictor		1	
-	034 115 273 A	intake manifold		1	
-	035 115 285 A	retaining ring		1	
(15)	034 115 427 C	round seal	26,5X2	1	
16	035 115 259	lock plate		1	
17	N 010 216 12	screw, hex. hd.	M6X18	2	
18	N 905 293 01	screw, hex. hd.	M6X10	2	
19	N 012 226 5	spring washer	B6X12X0,5	X	
21		oil filter see illustration:	9-05		
22	034 115 611 L	oil dipstick		1	
-	034 115 625 B	sealing washer	5X1,9	1	
		- - - E N D - - -			

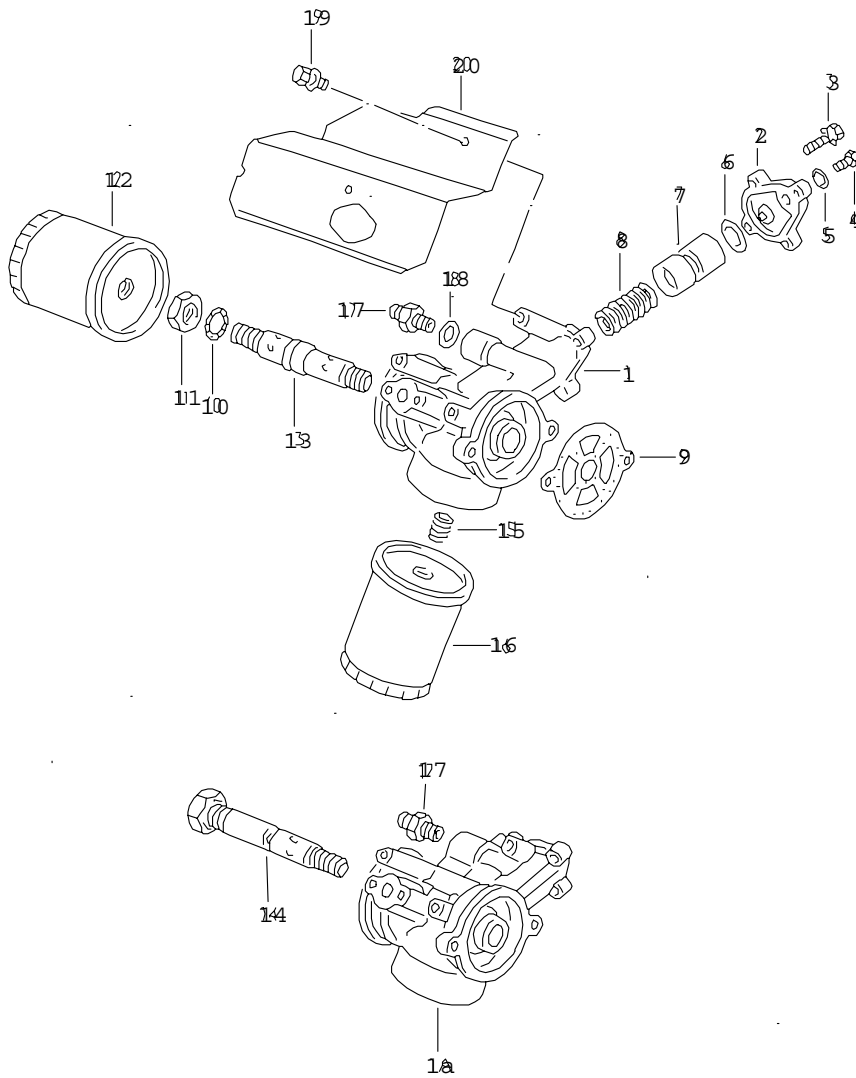


ETKA



Model QUAT	Year 83	MG: 1	SG: 15	Illustration 9-05	Restrictions	Update 525	21:33	18.04.2005
---------------	------------	----------	-----------	----------------------	--------------	---------------	-------	------------

9-05



AU,qu 2-86 AU,100qu 2-86 AU,200qu 2-86



ETKA



Model QUAT	Year 83	MG: 1	SG: 15	Illustration 9-05	Restrictions	Update 525	21:33	18.04.2005
---------------	------------	----------	-----------	----------------------	--------------	---------------	-------	------------

Pos	Part Number	Name	Remarks	Qty	Model
		oil filter bracket			WX
1	035 115 417 B	oil filter bracket		1	
2	067 115 423	sealing cap		1	
3	N 010 217 10	screw, hex. hd.	M6X20	4	
			also use: N 012 226 5	4	
-	N 012 226 5	spring washer	B6X12X0,5	X	
4	N 016 024 1	plug	M10X1	1	
5	N 013 811 5	sealing washer	A10X13,5	1	
6	035 115 427 A	sealing washer		1	
7	035 115 429	piston		1	
8	049 115 437	spring		1	
9	* 035 115 441 B	gasket		1	
10	* 035 115 427	round seal	15X2,5	1	
11	035 115 447 A	hex. nut F 85-C-900 001>>		1	
12	035 115 591	additional oil filter		1	
13	035 115 443	attachment bolt		1	
15	059 115 721	union		1	
16	035 115 561	oil filter		1	
17	049 117 233	union		2	
18	N 013 844 4	sealing washer	16X20X1,5	2	
19	N 010 212 26	screw, hex. hd.	M6X12	3	
			also use: N 012 226 5	3	
20	035 115 449	cover plate		1	
		- - - E N D - - -			

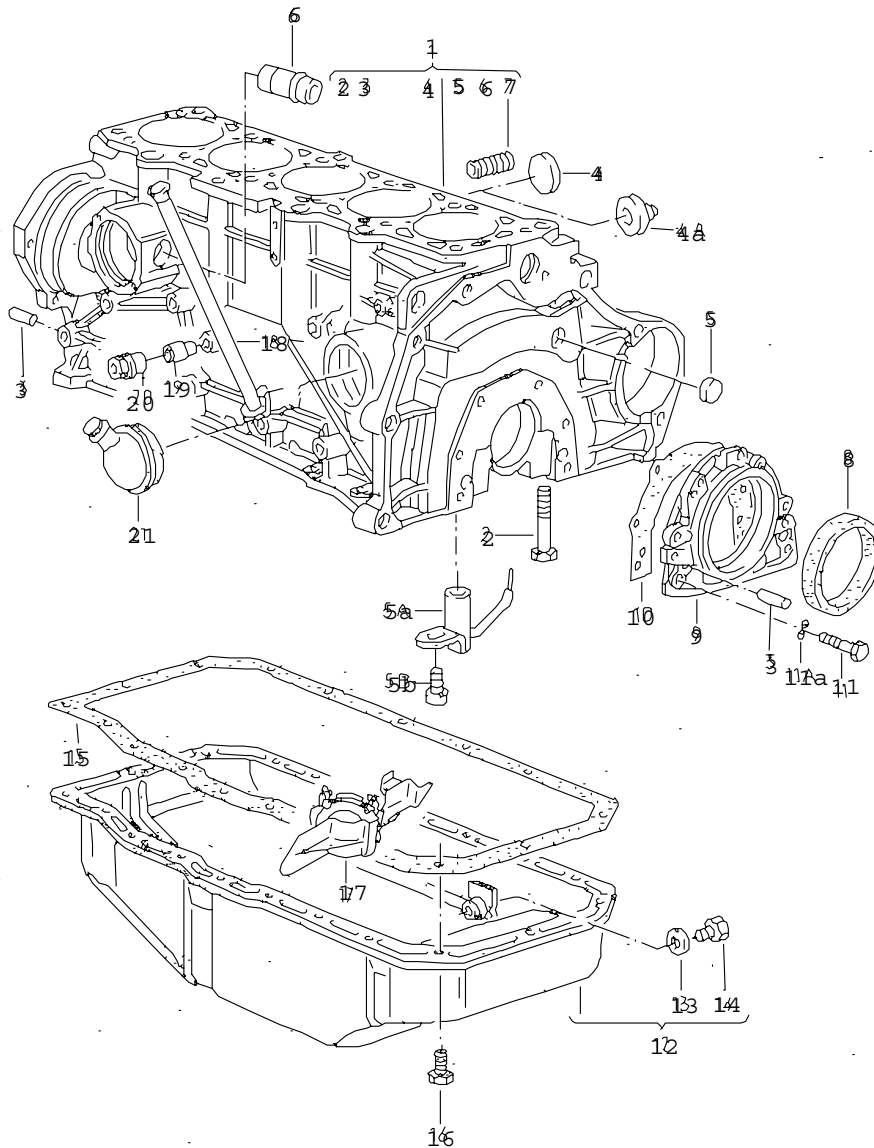


ETKA



Model	Year	MG:	SG:	Illustration	Restrictions	Update		
QUAT	83	1	03	2-00		525	21:10	18.04.2005

2



AU 200 au 88 1-88 AU 100 au 88 1-88 AU 200 qu 86 4-87 AU: 100 qu 85 4-87



ETKA



Model QUAT	Year 83	MG: 1	SG: 03	Illustration 2-00	Restrictions	Update 525	21:10	18.04.2005
---------------	------------	----------	-----------	----------------------	--------------	---------------	-------	------------

Pos	Part Number	Name	Remarks	Qty	Model
		cylinder block with pistons oil sump			WX
(1)	035 103 101 T	cylinder block with pistons		1	
2	N 901 300 01	screw, hex. hd.	AM10X80	12	
3	N 043 207 2	dowel pin	8H8X14	4	
4	059 103 113	sealing cap	36,6	5	
5	N 011 903 3	sealing cap	16	1	
5A	035 103 157 B	oil spray jet		5	
5B	N 014 750 6	bolt, with hex. socket hd.	M6X10	5	
		also use:	N 011 524 23	5	
-	N 011 524 23	washer	A6,4X12,5X1,6	5	
6	034 121 137	union		1	
7	059 115 721	union		1	
8	--- --- --- .	discontinued / replacement:	068 103 171 F	1	
9	068 103 171 F	sealing flange	rear	1	
10	* 026 103 181 B	gasket		1	
11	N 010 216 12	screw, hex. hd.	M6X18	6	
11A	N 012 226 5	spring washer	B6X12X0,5	6	
12	035 103 601 D	oil sump		1	
13	* N 013 849 2	sealing washer	A14X20	1	
14	N 902 889 01	plug	M14X1,5X16	1	
15	054 103 609	gasket for oil pan		1	
16	N 900 084 01	bolt, hex. hd. with shoulder	M6X14	24	
17	034 115 221	restrictor F 85-F-900 001>>		1	
18	035 103 635	tube for oil dipstick		1	
21	054 103 129 A	breather assy.		1	
-	034 198 011 C	set of gaskets for cylinder block		1	



ETKA



Model	Year	MG:	SG:	Illustration	Restrictions	Update		
QUAT	83	1	03	2-00		525	21:10	18.04.2005

Pos	Part Number	Name	Remarks	Qty	Model
		- - - E N D - - -			

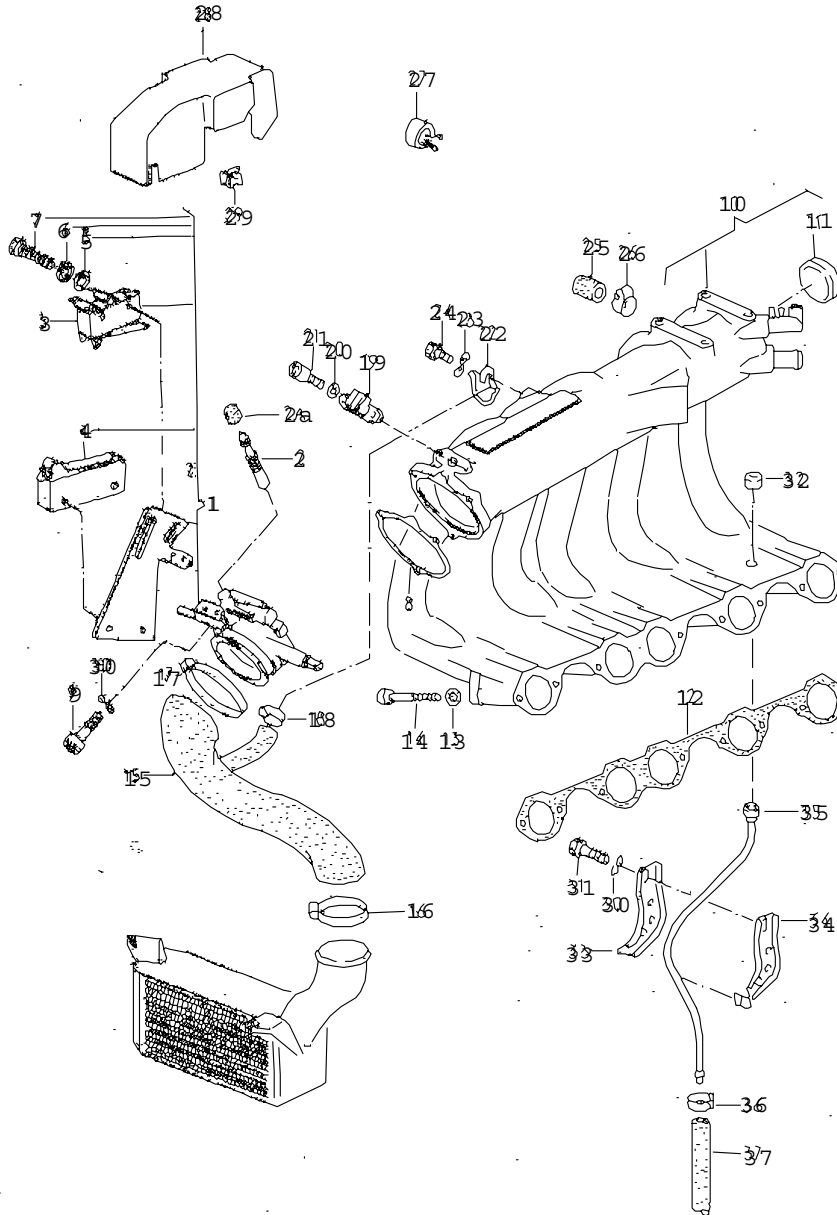


ETKA



Model	Year	MG:	SG:	Illustration	Restrictions	Update		
QUAT	83	1	33	14-00		525	21:36	18.04.2005

14



EP 46 2--88



ETKA



Model QUAT	Year 83	MG: 1	SG: 33	Illustration 14-00	Restrictions	Update 525	21:36	18.04.2005
---------------	------------	----------	-----------	-----------------------	--------------	---------------	-------	------------

Pos	Part Number	Name	Remarks	Qty	Model
		throttle body intake manifold temperature sensor			WX
1	035 133 063 FS	throttle body		1	
2	035 133 432	adjusting screw		1	
3	857 906 277	switch for full throttle enrichment F 85-D-900 582>>		1	
4	411 927 211	switch F >> 85-D-900 581		1	
(4)	443 906 277 B	switch F 85-D-900 582>>		1	
5	N 011 553 6	washer	3,2X6X0,5	4	
6	N 012 003 2	lock ring	B3	4	
7	N 014 154 1	fillister hd. screw	M3X18	4	
8	* 034 133 073 G	gasket		1	
9	N 010 217 10	screw, hex. hd.	M6X20 also use: N 012 226 5	3 3	
(10)	035 133 201 AJ	intake manifold		1	
11	059 103 113	sealing cap	36,6	1	
12	* 034 129 717 M	gasket		1	
13	N 011 558 11	washer	8,4X15X1,6	8	
14	N 014 711 2	bolt, with hex. socket hd.	M8X65	8	
15		pressure hose see illustration:	20-10 NR.18		
16	N 024 522 3	clamp	LA60-80	1	
17	N 024 518 3	clamp	AL70-90	1	
18	N 102 582 01	clamp	AL12-22	2	
19	035 905 379 B	temperature sensor		1	
20	N 011 557 2	washer	6,4X11X1,6	2	



ETKA



Model QUAT	Year 83	MG: 1	SG: 33	Illustration 14-00	Restrictions	Update 525	21:36	18.04.2005
---------------	------------	----------	-----------	-----------------------	--------------	---------------	-------	------------

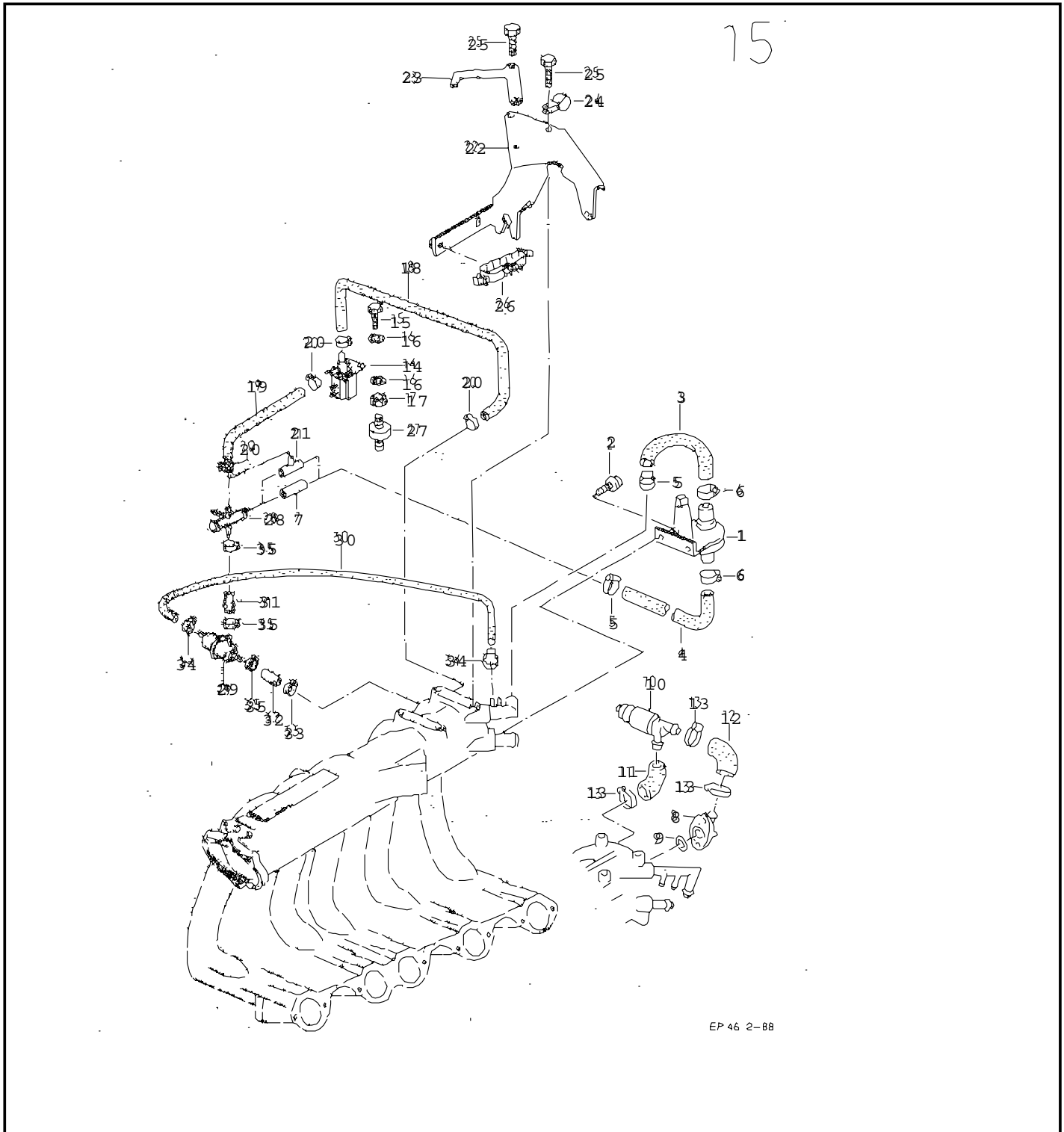
Pos	Part Number	Name	Remarks	Qty	Model
21	N 014 702 10	bolt, with hex. socket hd.	M6X15	2	
22	035 145 169	bracket		1	
23	N 012 226 5	spring washer	B6X12X0,5	1	
24	N 010 212 26	screw, hex. hd.	M6X12	1	
25	049 133 335	cap	10MM	1	
26	N 024 528 1	clamp	LC8-12	1	
27	803 971 847	cable terminal		1	
28	035 133 105	cap F >> 85-D-902 500		1	
(28)	035 133 105 A	cap F 85-E-900 001>>		1	
(28)	035 133 105 B	cap F 85-E-900 001>>		1	
29	191 819 145 A	clamp		1	
30	N 012 226 5	spring washer	B6X12X0,5	X	
		- - - E N D - - -			



ETKA



Model	Year	MG:	SG:	Illustration	Restrictions	Update		
QUAT	83	1	33	15-00		525	21:36	18.04.2005





ETKA



Model QUAT	Year 83	MG: 1	SG: 33	Illustration 15-00	Restrictions	Update 525	21:36	18.04.2005
---------------	------------	----------	-----------	-----------------------	--------------	---------------	-------	------------

Pos	Part Number	Name	Remarks	Qty	Model
		idle air control cold start valve			WX
1	035 133 453 E	idle air control		1	
2	N 014 702 10	bolt, with hex. socket hd.	M6X15	2	
3	035 133 783 G	hose		1	
4	035 133 386 A	connecting hose		1	
5	N 102 582 01	clamp	AL12-22	1	
6	N 102 582 01	clamp	AL12-22	1	
14	035 906 283	solenoid valve F >> 85-D-900 581		1	
(14)	035 906 283 A	solenoid valve F 85-D-900 582>>		1	
15	N 010 204 4	screw, hex. hd.	M4X10	2	
16	N 011 555 5	washer	4,3X8X0,5	4	
17	N 011 004 4	hex. nut	M4	2	
-	N 900 801 02	hose in coils of 5m 'order qty. 5'	7,5X3	*	
18		shorten to:	300MM	1	
19		shorten to:	250MM	1	
20	N 102 582 01	clamp	AL12-22	4	
22	035 133 207 C	support		1	
23	035 133 805	bracket		1	
-	N 090 315 1	bolt, hex. hd. (combi.)	M8X25-Z3	3	
24	N 020 620 1	clamp	D1-13X15	1	
25	N 010 287 3	screw, hex. hd.	M6X16	3	
26	034 133 806 D	bracket for fuel line		1	
28	035 133 382 AC	connecting pipe		1	
29	035 133 563 E	vacuum limiter		1	



ETKA



Model QUAT	Year 83	MG: 1	SG: 33	Illustration 15-00	Restrictions	Update 525	21:36	18.04.2005
---------------	------------	----------	-----------	-----------------------	--------------	---------------	-------	------------

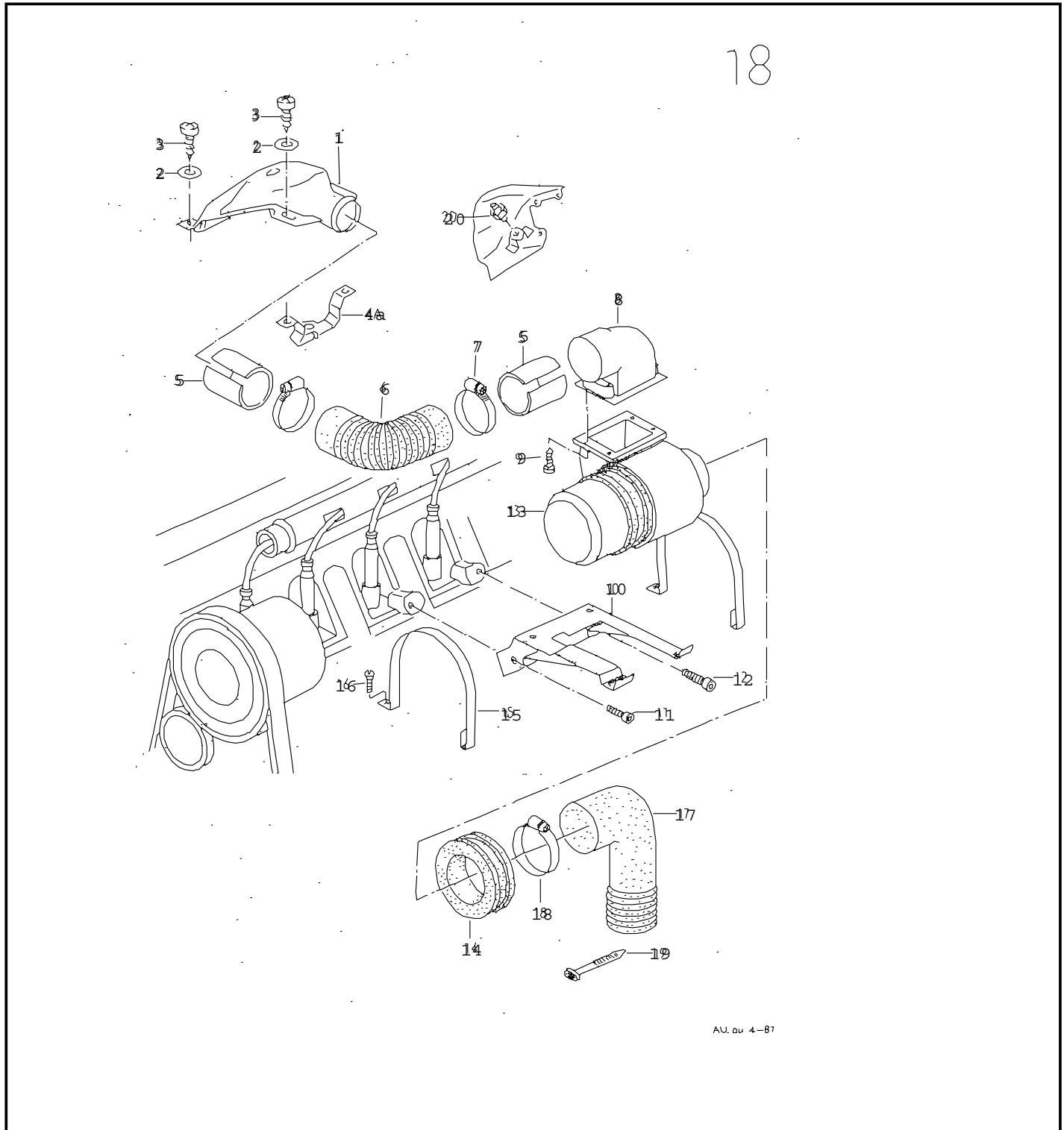
Pos	Part Number	Name	Remarks	Qty	Model
-	N 020 353 5	hose in coils of 5m 'order qty. 5'	3,5X2	*	
30		shorten to:	520MM	1	
-	N 102 218 01	hose in coils of 5m 'order qty. 5'	9X3	*	
31		shorten to:	45MM	1	
32	035 133 584 D	hose		1	
33	N 102 582 01	clamp	AL12-22	1	
34	N 024 399 2	clamp	A7X8	2	
35	N 905 617 01	tapping screw, fill. hd.	E3X9,5	3	
		- - - E N D - - -			



ETKA



Model	Year	MG:	SG:	Illustration	Restrictions	Update		
QUAT	83	1	33	18-00		525	21:37	18.04.2005





ETKA



Model QUAT	Year 83	MG: 1	SG: 33	Illustration 18-00	Restrictions	Update 525	21:37	18.04.2005
---------------	------------	----------	-----------	-----------------------	--------------	---------------	-------	------------

Pos	Part Number	Name	Remarks	Qty	Model
		injector cooling			WX
1	035 133 903	air deflector plate for injector cooling		1	
2	N 011 666 15	washer	6,4X18X1,6	X	
3	N 014 133 5	fillister hd. screw	M5X12	X	
4	035 133 825 D	bracket		1	
5	035 133 913	sleeve		2	
6	055 129 087 D	air hose	50,8X180	X	
7	N 024 504 4	clamp	LC40-60	2	
8	035 133 935 B	air duct		1	
9	N 901 308 01	fillister hd. screw	E4,2X16	4	
10	035 959 189 B	bracket		1	
11	N 014 702 10	bolt, with hex. socket hd.	M6X15	1	
12	N 014 779 1	bolt, with hex. socket hd.	M8X20	1	
13	073 959 175 C	fan		1	
14	035 959 209 C	rubber mounting		1	
15	035 959 196 A	clamp		2	
16	N 014 133 5	fillister hd. screw	M5X12	2	
17	035 959 181 D	intake hose		1	
18	N 024 505 4	clamp	LC50-70	1	
19	N 020 902 2	tie wrap	6X246	X	
(20)	035 959 481 B	thermal switch for fan run-on injector cooling	100C M10X1 1 pin white	1	
		- - - E N D - - -			



ETKA



Model QUAT	Year 83	MG: 1	SG: 98	Illustration REP	Restrictions	Update 525	22:35	18.04.2005
---------------	------------	----------	-----------	---------------------	--------------	---------------	-------	------------

Pos	Part Number	Name	Remarks	Qty	Model
	> 034 198 011 C	set of gaskets for cylinder block comprising:			
	068 198 171	repair kit for sealing flange		1	
	026 103 181 B	gasket		1	
	054 103 609	gasket for oil pan		1	
	054 115 147 B	radial shaft seal	35X48X10	1	
	034 115 189 A	gasket		1	
	034 115 625 B	sealing washer	5X1,9	1	
	072 115 257	gasket		1	
	034 115 427 C	round seal	26,5X2	1	
	035 115 427	round seal	15X2,5	1	
	035 115 441 B	gasket		2	
	069 115 441 A	gasket		2	
	035 121 043	round seal	98X4	1	
	N 901 368 02	round seal	60X3,5	1	
	035 145 757 C	gasket		1	
	N 013 832 1	sealing washer	A18X22	1	
	N 013 849 2	sealing washer	A14X20	1	
	N 900 351 03	round seal	21X3N	1	
	> 035 198 012 K	1 set of gaskets for cylinder head F 85-B-900 159>> comprising:			
	068 103 085 E	seal	47X10	1	
	035 103 383 J	cylinder head gasket		1	
	034 103 483 J	gasket		1	
	035 103 491 A	half-round gasket		1	



ETKA



Model QUAT	Year 83	MG: 1	SG: 98	Illustration REP	Restrictions	Update 525	22:35	18.04.2005
---------------	------------	----------	-----------	---------------------	--------------	---------------	-------	------------

Pos	Part Number	Name	Remarks	Qty	Model
	100 109 001	fitting sleeve	8X20	2	
	026 109 675	seal - valve stem	8MM	10	
	052 121 091 A	gasket		1	
	035 129 589 D	gasket		1	
	028 129 589 B	gasket		5	
	034 129 717 M	gasket		1	
	037 133 073 A	gasket		1	
	034 133 073 G	gasket		1	
	056 905 261	sealing washer		1	
	050 906 179	gasket		1	
	N 013 811 5	sealing washer	A10X13,5	1	
>	034 198 025 D	set of gaskets for cylinder head cover reinforcement plate F 85-B-900 159>> comprising:			
	034 103 483 J	gasket		1	
	035 103 491 A	half-round gasket		1	
>	035 198 049	set of seals for vane pump comprising:	049 145 155 X		
		sealing washer		1	
		circlip		1	
>	049 198 151 F	1 set of piston rings comprising:	79,5		
	049 107 301 F	piston ring, upper	79,50X1,75	1	
	035 107 311 B	piston ring, lower	79,50X2	1	
	035 107 321 B	oil scraper ring	79,50X4	1	



ETKA



Model QUAT	Year 83	MG: 1	SG: 98	Illustration REP	Restrictions	Update 525	22:35	18.04.2005
---------------	------------	----------	-----------	---------------------	--------------	---------------	-------	------------

Pos	Part Number	Name	Remarks	Qty	Model
	> 049 198 153 F	1 set of piston rings (oversize) comprising:	79,75		
	049 107 303 F	piston ring, upper	79,75X1,75	1	
	049 107 313 C	piston ring, lower	79,75X2,00	1	
	049 107 323 D	oil scraper ring	79,75X4,00	1	
	> 049 198 155 F	1 set of piston rings (oversize) comprising:	80		
	049 107 305 F	piston ring, upper	80,00X1,75	1	
	049 107 315 C	piston ring, lower	80,00X2,00	1	
	049 107 325 D	oil scraper ring	80,00X4,00	1	
	> 049 198 157 F	1 set of piston rings (oversize) comprising:	80,5		
	049 107 307 F	piston ring, upper	80,50X1,75	1	
	049 107 317 C	piston ring, lower	80,50X2,00	1	
	049 107 327 D	oil scraper ring	80,50X4,00	1	
	> 035 198 401	1 set of connecting rods comprising:			
	056 105 401 D	connecting rod		5	
	> 035 198 421	1 set of thrust washers comprising:	bearing 4		
	035 105 635 A	thrust washer	lower	2	
	035 105 637 A	thrust washer	upper	2	



ETKA



Model QUAT	Year 83	MG: 1	SG: 98	Illustration REP	Restrictions	Update 525	22:35	18.04.2005
---------------	------------	----------	-----------	---------------------	--------------	---------------	-------	------------

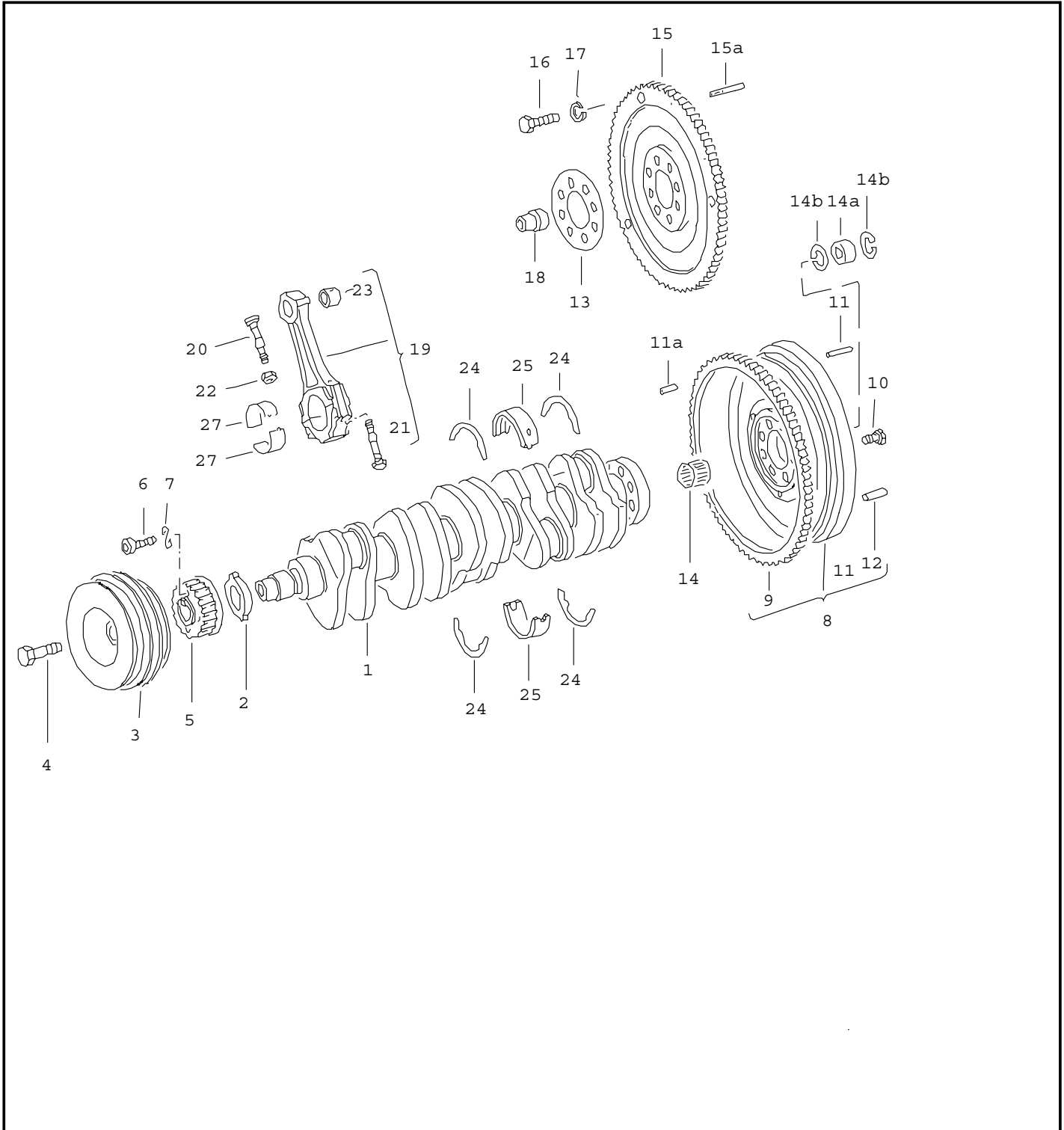
Pos	Part Number	Name	Remarks	Qty	Model
>	034 198 491 A	1 set of crankshaft bearings comprising:			
	034 105 561 A	crankshaft bearing shell	upper	1	
	7/80 7/89 007	yellow			
	034 105 591 A	crankshaft bearing shell	lower	1	
	7/80 7/89 007	yellow			
>	035 198 493	1 set of crankshaft bearings comprising:	0.25 u.s.		
	035 105 567	crankshaft bearing shell	upper	1	
	035 105 597	crankshaft bearing shell	lower	1	
>	035 198 495	1 set of crankshaft bearings comprising:	0.5 u.s.		
	035 105 573	crankshaft bearing shell	upper	1	
	035 105 603	crankshaft bearing shell	lower	1	
>	035 198 497	1 set of crankshaft bearings comprising:	0.75 u.s.		
	035 105 579	crankshaft bearing shell	upper	1	
	035 105 609	crankshaft bearing shell	lower	1	
		- - - E N D - - -			



ETKA



Model	Year	MG:	SG:	Illustration	Restrictions	Update		
QUAT	83	1	05	5-00		525	21:27	18.04.2005





E T K A



Model QUAT	Year 83	MG: 1	SG: 05	Illustration 5-00	Restrictions	Update 525	21:27	18.04.2005
---------------	------------	----------	-----------	----------------------	--------------	---------------	-------	------------

Pos	Part Number	Name	Remarks	Qty	Model
		crankshaft connecting rod			WX
1	035 105 021	crankshaft		1	
2	046 105 177	lever for oil pump		1	
3	034 105 251 A	v-belt pulley with vibration damper		1	
4	N 010 143 2	screw, hex. hd.	M18X1,5X65	1	
5	035 105 263 C	toothed belt pulley			
6	N 014 726 3	bolt, with hex. socket hd.	M8X30	4	
8	035 105 270 B	flywheel		1	
9	059 105 275	starter ring		1	
10	N 902 061 03	screw, hex. hd.	M10X1X19,5	8	
11	N 902 599 01	dowel pin	4H8X28	2	
11A	N 902 318 01	dowel pin	4H8X20	1	
12	N 013 210 2	dowel pin	6M6X16	3	
14	046 105 313 D	needle bearing -	C18X24X16	1	
19	035 198 401	1 set of connecting rods		1	
20	* 056 105 425 C	connecting rod bolt,pressed in	M9X1	10	
22	056 105 427	hex. nut	M9X1	10	
23	* 056 105 431	bushing-connecting rod		5	
24	035 198 421	1 set of thrust washers	bearing 4	1	
25	034 198 491 A	1 set of crankshaft bearings	upper/lower	6	
(25)	035 198 493	1 set of crankshaft bearings	0.25 u.s. upper/lower	X	
(25)	035 198 495	1 set of crankshaft bearings	0.5 u.s. upper/lower	X	
(25)	035 198 497	1 set of crankshaft bearings	0.75 u.s. upper/lower	X	
27	056 105 701	connecting rod bearing shell		10	



ETKA



Model	Year	MG:	SG:	Illustration	Restrictions	Update		
QUAT	83	1	05	5-00		525	21:27	18.04.2005

Pos	Part Number	Name	Remarks	Qty	Model
(27)	056 105 707	connecting rod bearing shell	0.25 u.s.	10	
(27)	056 105 713	connecting rod bearing shell	0.5 u.s.	10	
(27)	056 105 719	connecting rod bearing shell	0.75 u.s.	10	
-	AMV 188 001 02	sealing paste	100G	X	
		- - - E N D - - -			

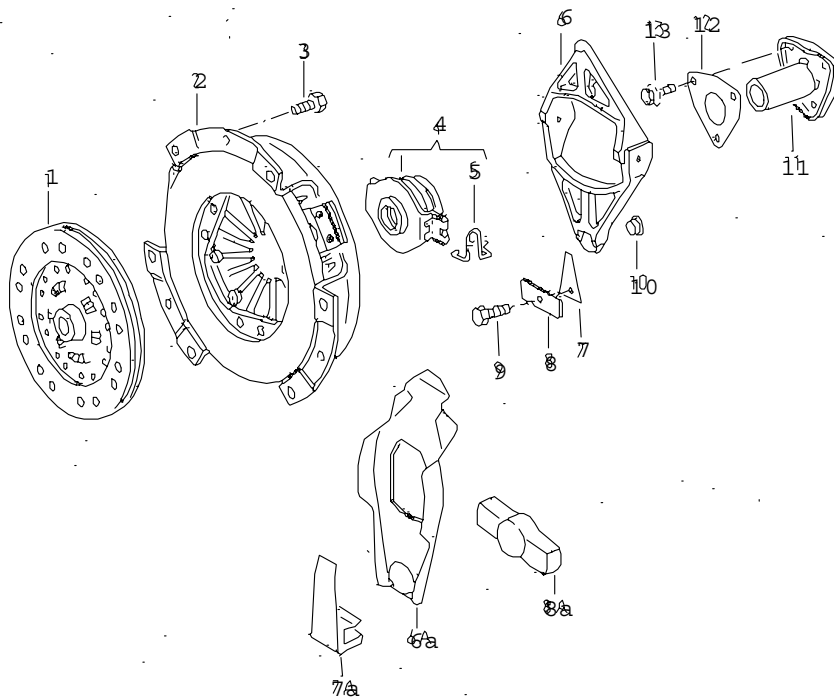


ETKA



Model QUAT	Year 83	MG: 1	SG: 41	Illustration 19-00	Restrictions	Update 525	21:37	18.04.2005
---------------	------------	----------	-----------	-----------------------	--------------	---------------	-------	------------

19:



AU.qu 4-87



ETKA



Model QUAT	Year 83	MG: 1	SG: 41	Illustration 19-00	Restrictions	Update 525	21:37	18.04.2005
---------------	------------	----------	-----------	-----------------------	--------------	---------------	-------	------------

Pos	Part Number	Name	Remarks	Qty	Model
		clutch			WX
1	#035 141 033 GX	clutch disc	240MM	1	
2	>035 141 117 K	clutch pressure plate	240MM	1	
3	N 014 739 2	bolt, with hex. socket hd.	M8X16	6	
4	088 141 165 B	release bearing		1	
5	113 141 177 C	retaining spring	left	1	
(5)	113 141 178 C	retaining spring	right	1	
6	016 141 719	clutch operating lever		1	
7	088 141 721	flat spring		1	
8	088 141 737	retaining plate		1	
9	N 040 203 3	screw, hex. hd.	M7X15	1	
10	016 141 319	ball cap		1	
11	016 141 181	guide sleeve	steel	1	
12	113 141 176	washer		1	
13	N 040 203 3	screw, hex. hd.	M7X15	3	
		- - - E N D - - -			