



Audi RS4

DEAR AUDI DRIVER,

The aim of this quick reference guide is to introduce you to the main features and controls of your vehicle.

This quick reference guide cannot replace the information contained in the Owner's Manual; it is therefore important that you also read the notes and warnings in the Owner's Manual.

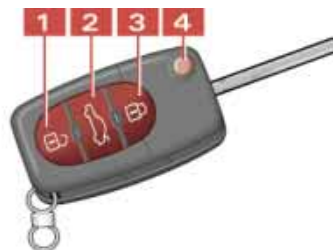
We wish you safe and enjoyable motoring with your new Audi.

AUDI AG



LOCKING SYSTEM

The central locking system locks and unlocks all the doors, the tailgate and the tank flap. It can be operated with the remote control or by turning the key in the lock.



Operating the radio-activated remote control

Press the appropriate button for about 1 second.

1 Unlocking button for doors

Open one of the doors or the tailgate within about 60 seconds, otherwise the car will automatically be locked again.

2 Unlocking button for tailgate

3 Locking button

The turn signals will flash briefly when the car is locked to confirm that doors and tailgate are closed properly.

4 Folding out the master key

Press the release button.

Folding away the master key

Press the button and fold the key away.

Note: Press and hold unlocking button on remote control (or turn and hold key in lock on either the driver's or front passenger's door) to open all the windows. Press and hold locking button on remote control (or turn and hold key in lock on driver's or front passenger's door) to close all the windows and the sun roof.

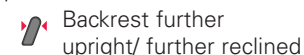
ADJUSTING FRONT SEATS

1 Adjusting head restraints

Move the head restraint up or down.

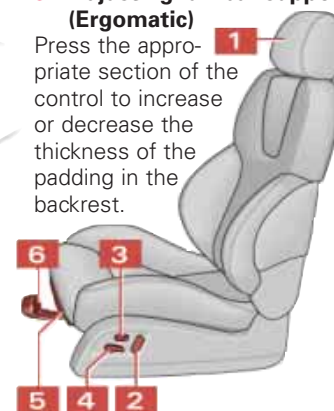
2 Adjusting angle of backrest

Press the switch in the appropriate direction:



3 Adjusting lumbar support (Ergomatic)

Press the appropriate section of the control to increase or decrease the thickness of the padding in the backrest.



4 Adjusting seat height

Press down or pull up the switch to lower or raise the seat as required.

5 Adjusting seat cushion

To extend or retract the seat cushion, press in the button under the seat and pull out or push back the seat cushion.

6 Moving seat backwards or forwards

Lift the handle and move the seat.

Adjusting belt height

Slide the guide up or down. Tug the belt to check that the catch is engaged properly.



SUN ROOF



Turn the control to the appropriate position to open and close the sun roof:

- 1 To slide roof open**
- 0 To close roof**

To tilt roof up at the rear: turn the control to position **0** and press the control.

To move it down again: pull the control briefly.

FILLING THE TANK



Opening the tank flap

Open the filler flap as illustrated. Unscrew the filler cap and hook it onto the filler flap.

Stickers for:

- 1 Fuel grade**
- 2 Tyre pressures**



SAFETY

Seat belts must be worn on every journey, even on short trips in town. This applies to the front **and** rear seats. To ensure that the seat belts, belt tensioners and airbags are fully effective, note the following points:



Adjust seat and sit in correct position

It is important to sit in a normal, upright position. Do not move the front seats too close to the steering wheel/ dashboard. Make sure that the upper edge of the head restraint is at least at eye level. Keep your feet in the footwell when the vehicle is in motion.

Wear the seat belt correctly

Make sure that the shoulder section of the belt is positioned over the centre of the shoulder, and move the lap section as far down over the hips as possible (see illustration). The seat belt should always fit closely. If it is slack, pull it tight.

Safety of children in the vehicle



Children under 12 should travel on the rear seat. They must be protected by a child restraint system which complies with the European standard ECE R 44 and is suitable for the child's weight and height. The safest place for the child restraint system is behind the front passenger's seat. Make sure that the system is properly secured. **Please observe the notes in the Audi Owner's Manual and refer to the manufacturer's instructions for the child seat.**

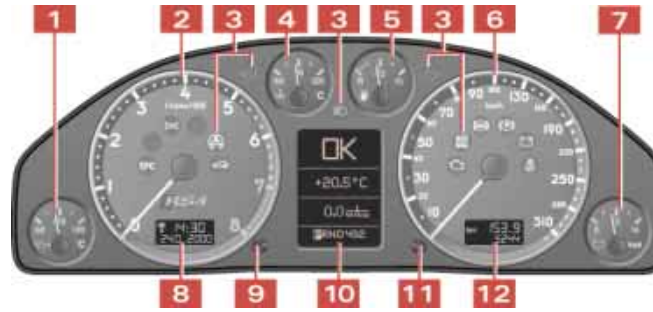
Category 0 or 0+: For babies up to about 9 months/ 10 kg and infants up to about 18 months/ 13 kg.

Category 1: For small children up to about 4 years of age/ 18 kg.

Category 2: For children up to about 7 years/ 25 kg.

Category 3: For children over the age of 7 and between 1.30 m and 1.50 m tall. The child should travel on a booster cushion on the rear seat, wearing the normal three-point belt.

INSTRUMENTS



1 Engine oil temperature gauge

2 Rev counter

3 Warning and indicator lamps

EPC Electronic power control (for engine)¹⁾

➤ Side lights/ headlights

⚡ Dynamic headlight range control faulty¹⁾

⚙️ Electronic stability program

🚫 Electronic immobilizer

☞ Main beam headlights

⚡ Turn signals, hazard warning lights

📁 Fault in engine management system¹⁾

AIR BAG Airbag system¹⁾

🛑 Anti-lock brake system¹⁾

🛑 Handbrake engaged

📁 Alternator¹⁾

🚫 Seat belt reminder

4 Coolant temperature gauge

5 Fuel gauge

6 Speedometer

7 Voltmeter

8 Time/ date

9 Control button

To check distance to next service

Press the button briefly with the ignition on and the vehicle stationary.

To check the auto-check control display

Press the button twice with the ignition on and the vehicle stationary.

To call up driver information

Press the button if one of the red symbols flashes.

To activate mileage recorder display and clock

Press the button when the ignition is off.

To select a speed limit

Press the button briefly when the desired speed is indicated on the speedometer. To clear the speed limit, press the button for at least 1 second.

To set the time/ date

Keep pulling the button briefly until the desired display appears. Turn the button to alter the time/ date.

10 Display:

Warning symbols and auto-check control

OK No faults detected

🛑 Fault in brake system

🌡️ Coolant temperature too high/ coolant level too low

🛑 Engine oil pressure too low

🛑 BREMSLICHT / 🛑 Brake light faulty¹⁾

🛑 Bulb failure: dipped headlights or rear lights¹⁾

🛑 Brake pads worn¹⁾

🛑 Washer fluid level low

🛑 Fuel level low

🛑 Battery voltage too high or too low¹⁾

🛑 Check engine oil level

🛑 Engine oil sensor faulty¹⁾

🛑 Speed warning 1 or 2 (km/h or mph)

🛑 Door or tailgate not shut

Radio information

Outside temperature

On-board computer

l/100 km Instantaneous fuel consumption

km Fuel range

h Driving time

l/100 km Average fuel consumption

okm/h Average speed

Navigation system

Service indicator

This display will appear if servicing work is due: e.g. **SERVICE IN 2000 KM**

11 Reset button for trip recorder

To adjust the instrument lighting
Turn the button to regulate brightness.

12 Mileage recorder

Top display: trip recorder
Bottom display: total mileage

If one of the red symbols lights up while you are driving, stop the car, switch off the engine and refer to the Owner's Manual.

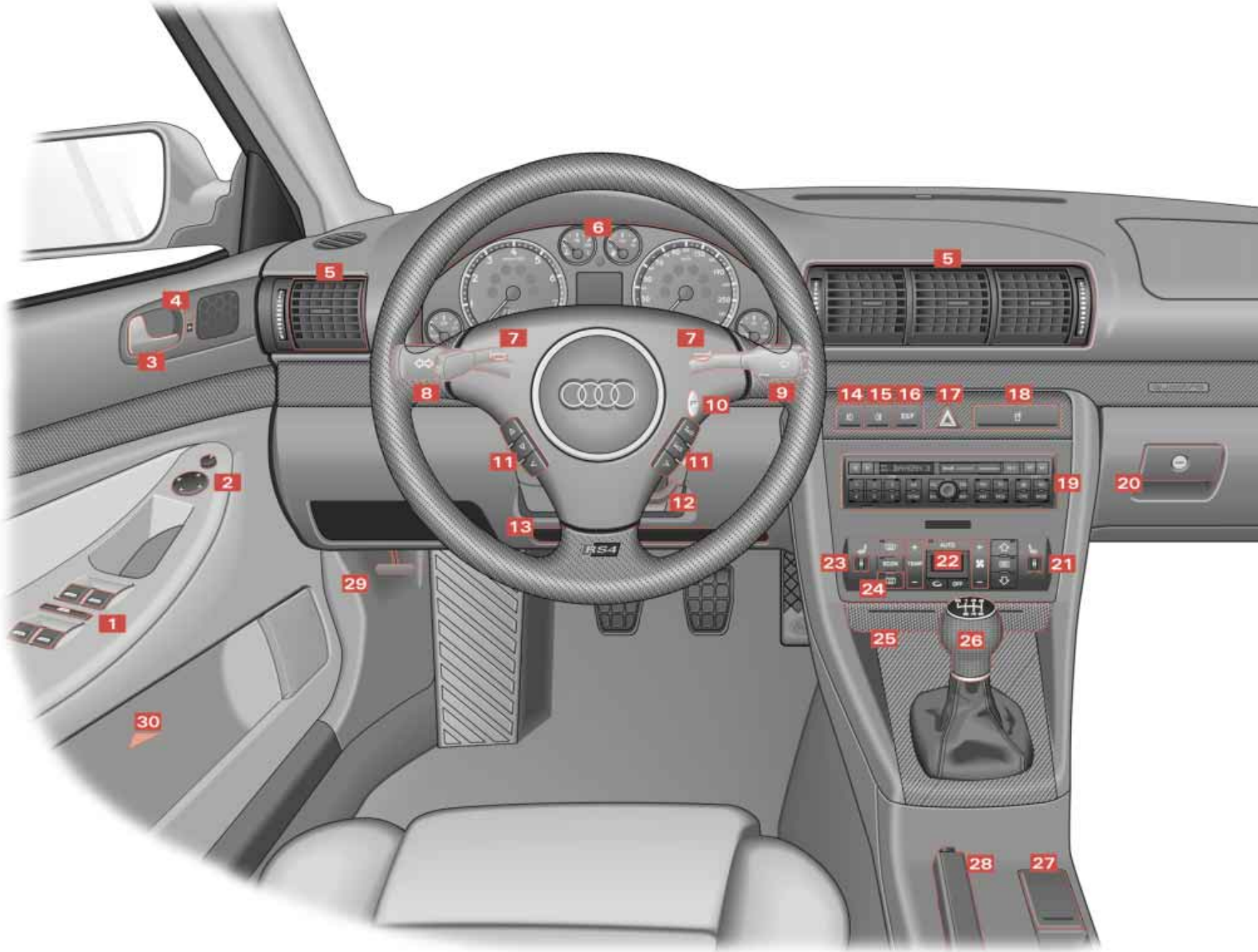
¹⁾ If one of these warning symbols lights up while you are driving, please take the vehicle to an Audi workshop straightaway.

© 2000 AUDI AG

AUDI AG reserves the right to alter any part of the vehicle, its equipment and technical specifications. No legal commitment can be implied by the information, illustrations or descriptions in this publication. No part of this publication may be reprinted, reproduced or translated without the written permission of AUDI AG. All rights under the laws of copyright are expressly reserved by AUDI AG. Subject to change. Printed in Germany. Concept and layout: Priemer Kataloge GmbH.

Kurzanleitung Audi RS4 englisch 4.00

211.562.647.20




1 Electric windows

Press the switch briefly to move window all the way down. Lift the switch briefly to move the window all the way up. The window can be stopped in any position by briefly pressing the switch again.

The rear windows can be deactivated by pressing the **safety switch** (in the centre of the panel of switches).

2 Electric adjustment for exterior mirrors

Selector knob:

- L** Left exterior mirror
- I** Off
- R** Right exterior mirror
-  **Retract both exterior mirrors**

Press the adjuster to move the mirror surface in the desired direction. The mirrors are heated when the ignition is on.

3 Door handle

4 Central locking switch

Press the lower half of the switch to lock the vehicle centrally from the inside. Press the top half of the switch to unlock the vehicle.

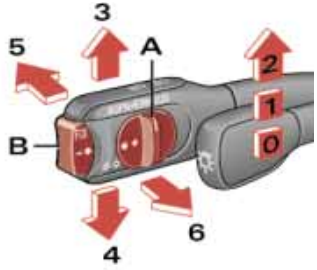
5 Air outlets

6 Instruments

See also overleaf.

7 Horn

8 Light switch; turn signal and headlight dip lever



Light switch:
0 Lights off
1 Side lights
2 Main or dipped
beam headlights

**Turn signal and
headlight dip lever:**
3 Right turn signals
4 Left turn signals
5 Main beam headlights
6 Headlight flasher

Controls for cruise control system

To activate the system: slide control **A** to ON/ EIN position.

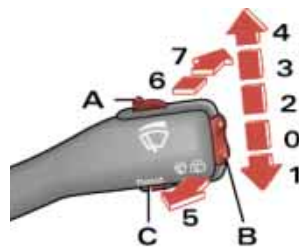
Press button **B** to store the current speed and maintain this speed constantly.

To switch off cruise control temporarily: press either the brake pedal or clutch pedal, or slide control **A** to OFF/ AUS.

To resume the programmed cruising speed: slide control **A** to RES/ AUFN.

To switch off cruise control completely: slide control **A** all the way over to OFF/ AUS until the click stop engages.

9 Windscreen wiper and washer lever



Windscreen:

0 Off
1 Brief wipe
2 Intermittent wipe
The wiper intervals can be varied in stages by turning control **A**.
3 Slow wiper speed
4 Fast wiper speed
5 Automatic wash and wipe

Pull lever towards you and hold.

Rear window:

6 Intermittent wipe
Press lever towards dashboard.
7 Automatic wash and wipe
Press lever as far as it will go towards dashboard and hold.

Function selector switch for on-board computer

Press the top or bottom of rocker switch **B** to show the various displays in turn. Press and hold button **C** to reset display to zero.

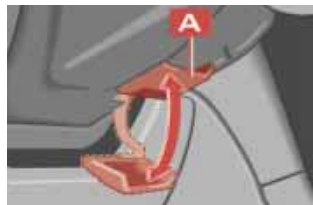
Selector button for display modes

Press button **C** repeatedly to switch from the standard display to the navigation system display, and to switch the display off.

10 Ignition lock

11 Steering wheel controls for radio, CD player and telephone

12 Lever for adjustable steering column



Pull lever **A** down and adjust the position of the steering column as required. Then push the lever back up as far as it will go.

13 Compartment for Owner's Manual and Service Wallet

14 Switch for front fog lights

15 Switch for rear fog light

16 Switch for ESP (electronic stability program)

17 Switch for hazard warning lights

18 Cup holder

Press to open.

19 Radio or Navigation System Plus

20 Lockable glove box

21 Thumbwheel for seat heating (front right seat)

22 Air conditioner controls:

- + Temperature setting

AUTO Automatic mode

-%+ Blower speed

 Defrost windows

Standard setting for all seasons:

Select a temperature of 22 °C and switch the automatic mode on.

23 Thumbwheel for seat heating (front left seat) and steering wheel heating

24 Switch for rear window heater

25 Ashtray

Press front of ashtray to open.

26 Gear lever


27 Compartment for cigarette lighter and electrical socket or navigation system controls

28 Handbrake

29 Bonnet release lever

Please refer to Owner's Manual.

30 Switch in door pillar (driver's side)

 This switch deactivates the interior monitor for the anti-theft alarm system.