

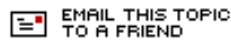


[My Profile](#) | [Active Users](#) | [Help](#) | [Search](#) | [Google Search](#)

You are not logged in, [Log in](#) | [Register](#)

VWvortex Forums ▶ [A6 & S6 \(C5\)](#) ▶ [brake question.](#) [Archived]

[POST NEW TOPIC](#) [START NEW POLL](#) [▲](#) [✎](#)



TRACK THIS TOPIC



bi-turbo'd

Member

Offline

Member Since

9-17-2006

53 posts

Indiana PA

2002, Audi A6 2.7T

brake question.

[«](#) [»](#) 5:16 PM 12-26-2006

i have a 02 A6 2.7t and i need to do a 4 wheel brake svc soon, including rear rotors. i was looking into some aftermarket rotors but how do i know what size rotors to get?

bi-turbo'd

Member

Offline

Member Since

9-17-2006

53 posts

Indiana PA

2002, Audi A6 2.7T

Re: brake question. (bi-turbo'd) [»](#)

[«](#) [»](#) 5:40 PM 12-26-2006

oh ya, what pads would you reccomend?

Massboykie

Member



Online

Member Since

8-15-2006

1017 posts

Boston MA

02 A6 & 98 GLX

Re: brake question. (bi-turbo'd) [»](#)

[«](#) [»](#) 9:19 AM 12-27-2006

Hey Bi

I have the same model as yours, and depending on the options on your car you may have either the 312X30mm or a 321X30mm front. (I do not think the 288mm was used on the 2002s) In the rear they came with 245X10 or 255X10mm.

I would start by looking at the car's option sheet. This is a sticker that is in the trunk on the side of the spare tire "well" or in your owners manual (not sure which one of the manuals). It has a bunch of 3 character numbers on it (check out the image below). Each of these will indicate some option they installed on the car at the factory. The other link below is the options that came with the C5, from the Bentley. So look for the "Production relevant-No." (Pr. No.) on your option sheet that match the different ones in the Bentley doc. This will tell you what you have on the car assuming nobody changed anything...

[Http://www.VAGLinks.com/Pics/A...s.gif](http://www.VAGLinks.com/Pics/A...s.gif)

[Http://www.VAGLinks.com/Docs/A...s.pdf](http://www.VAGLinks.com/Docs/A...s.pdf)

On my car, my option sheet stated "1KD" i.e. 245mm rears, but luckily I measured the rears before I ordered and it turned out to be 255mm. I got my car used so I am not sure if this came from the factory that way, but looking at the brakes I believe it did. The pads are the same for both so that helps. Just an FYI.

If you have the 321mm fronts, you need to be careful when ordering as I believe there are 2 variations of this rotor. The one uses the 4 pad per caliper (Lucas Girling 2 piston) and the other the 2 pad per caliper (ATE single piston). The 4 pad was used on the S4 and some Allroads and the 2 pad on the C5 sedans (I believe). To make sure, I would suggest to measure the rotor hat height and order accordingly. I do not have all the part numbers with me at the moment, but I will post them for you. (Assuming you have the 321mm fronts) Look at the ECS Tuning (<http://www.ecstuning.com>) site, they have info on this. I ordered this from them, but after a 2 week backorder wait, and still no answer as to when they would have them, I had to cancel and get them elsewhere. My rears went metal to metal due to this wait... Be very careful if you do go through on your pads, I did not realise the damage the "metal shavings" can make to the clear coated rim.... I will be re-spraying one of mine

in the summer...

I liked the ECS rotors though drilled and slotted. Pity they were out of stock. Borrowed these pics from

ECS...

[Http://www.VAGLinks.com/Pics/A...m.jpg](http://www.VAGLinks.com/Pics/A...m.jpg)

[Http://www.VAGLinks.com/Pics/A...5.jpg](http://www.VAGLinks.com/Pics/A...5.jpg)

Brake pads? Sure this will spark a debate, but I am very impressed with the EBC pads (GreenStuff).

Cheers
Massboykie

2002 Audi A6 2.7T 6spd, ECS N75, 110s, UUC, GIAC-X, APR Catback
1998 VW Jetta GLX, QChip, custom 3" K&N intake & 2.5" Magnaflow

<http://www.VAGLinks.com> - 1000+ VAG Links!
<http://www.PlanetVAG.com> - VAG Only Search Engine!

bi-turbo'd

Member

Offline

Member Since
9-17-2006
53 posts

Indiana PA
2002, Audi A6 2.7T

 Re: brake question. (Massboykie) >>

<< >> 6:20 PM 12-27-2006

very cool man. thanks for the info

Massboykie

Member



Online

Member Since
8-15-2006
1017 posts

Boston MA
02 A6 & 98 GLX

 Re: brake question. (bi-turbo'd) >>

<< >> 9:43 AM 12-28-2006

Sure, glad I could help. I did a lot of research before I did mine, so let me know if you have any questions or need some info, I probably have it! 🤖 I was looking at upgrading my rears to an S4 setup too, but after speaking to the guys at StopTech decided against it. Basically it would negatively affect my ABS, which I did not want.

Here's the part numbers from mine.

REARS (255X10mm) – PR# 1KD (which should actually be 245mm)

=====

Audi: 4B0-615-601-B Ate: 24.1110-0260.1

Pads: EBC GreenStuff: DP2680 (This is the same D340 pad shape on most late model VWs and Audis)

This is a rough image I put together for the guy I ordered mine from, so they might not be perfect.

[Http://www.VAGLinks.com/Pics/A...B.gif](http://www.VAGLinks.com/Pics/A...B.gif)

Here's one borrowed from ECS Tuning:

[Http://www.VAGLinks.com/Pics/Audi/C5/Rear_255X10_1.5inch.jpg](http://www.VAGLinks.com/Pics/Audi/C5/Rear_255X10_1.5inch.jpg)

FRONTS (321X30mm) – PR# 1LG

=====

Audi: 8D0-615-301-K Zimmermann: 100.1249.00

Pads: EBC GreenStuff: DP21510 (Shape D915) – wear sensor built-in

Here the blueprint of the Zimmermann if you are interested. FYI, the 100.1249.50 is the factory cross drilled one:

[Http://www.VAGLinks.com/Pics/A...0.pdf](http://www.VAGLinks.com/Pics/A...0.pdf)

[Http://www.VAGLinks.com/Pics/A...8_8D0-615-301K.jpg](http://www.VAGLinks.com/Pics/A...8_8D0-615-301K.jpg)

Additional stuff...

I got my part numbers right of the car. If you take the wheel off the part number is on the bolt face of the rotors. Or at least mine were. Some of the writing is a little hard to read, for example on my fronts I wasn't sure if it was 8-zero-zero or 8-Dee-zero, as the cast iron print wasn't to clear. A quick search confirmed that the 8-zero-zero did not exist though.

On the Zimmermann box there were some other Audi numbers this same set replaces:

As it was printed on the box... 8D0-615-301-K / M 8E0-615-301-A

The first set of fronts I received were wrong for my car, but these might be relevant for you: They were 4B3-615-301 and had the 22mm Hat height, used with the Lucas Girling Caliper (4 pads per side, same as S4) On mine the Height is 16.5mm Ate caliper (2 pads per side)

This is what I got from the guy when we were trying to figure out which ones fit my car. Might be handy for you: [Http://www.VAGLinks.com/Pics/Audi/C5/A6rotors2.gif](http://www.VAGLinks.com/Pics/Audi/C5/A6rotors2.gif)

Here is the blueprint of the 245X10mm one that did NOT fit mine as the rotor hat is +/- 8mm higher. [Http://www.VAGLinks.com/Pics/A...A.jpg](http://www.VAGLinks.com/Pics/A...A.jpg)

Just another FYI... Before I did my brake job, I was looking at my pads to see how much "life" they had left, and I thought I still had plenty. I was looking at the outside pad and they still looked in great shape. When I took the calipers off I was amazed at how thin the inside pad was.

Hope that helps!

Cheers
Massboykie

Modified by Massboykie at 11:48 AM 12-28-2006

2002 Audi A6 2.7T 6spd, ECS N75, 110s, UUC, GIAC-X, APR Catback
1998 VW Jetta GLX, QChip, custom 3" K&N intake & 2.5" Magnaflow

<http://www.VAGLinks.com> - 1000+ VAG Links!

<http://www.PlanetVAG.com> - VAG Only Search Engine!

WAULD6
4B2

Audi VIN

A6 Lim. quat. 2.7

187KW

M6S

08/01

APB

EUU FTG

LY9B/LY9B

NIH/ LA

EOA OGL 4UB 6XL

1KD J1R 1LG 1BE

3FE 5MG 7X1

FOA 8GL 0G1 0YQ 0JL

T7Z 3NZ 8EH U1D X9A 1N3

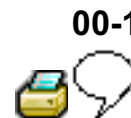
2ZQ 3HA 8Q3 9Q2 8Z5 MH0

7Q0 COX 7K0 4X3 2K5 6R2

3PN 4KC 3Y0 4K2 5D2

1SA Q1D 4GP

1755 9,9 9,9 9,9 999



Technical data

Brakes

Vehicles with front and rear disc brakes

Brakes system						
Two circuit brake system with diagonal division and ABS with EDL, EBD and optional ESP.						
Brake master cylinder	diameter	23.81	25.4	25.4	25.4	26.99
	in mm					
Brake servo, pneumatic	diameter	10"	10"	7"+8"	8"+9"	8"+9"
	in inches			Tandem	Tandem	Tandem

- [Vehicle](#)
- [System](#)
- [Repair Group](#)
- [Previous Topic](#)
- [Next Topic](#)
- [Technical Bulletins](#)
- [Wiring Diagrams](#)
- [Warnings & Cautions](#)
- [Print](#)

[Advanced Search](#)


Boost factor		3.85	5.0	5.2	5.5	7.0
--------------	--	------	-----	-----	-----	-----

Front brakes						
Brake calipers		FN - 3 (15")	FN - 3 (16")	FNR- G60	HP 2 (16")	Brembo (18")
Production- relevant-No. (Pr. No.)		1LB, 1LE	1LT, 1LF	1LA, 1LG	1LX, T7Z	1LJ
Brake disc, (vented)	diameter in mm	288	312	321	321	365
Brake disc, thickness	mm	25	25	30	30	34
Brake disc, (wear limit)	mm	23	23	28	28	32

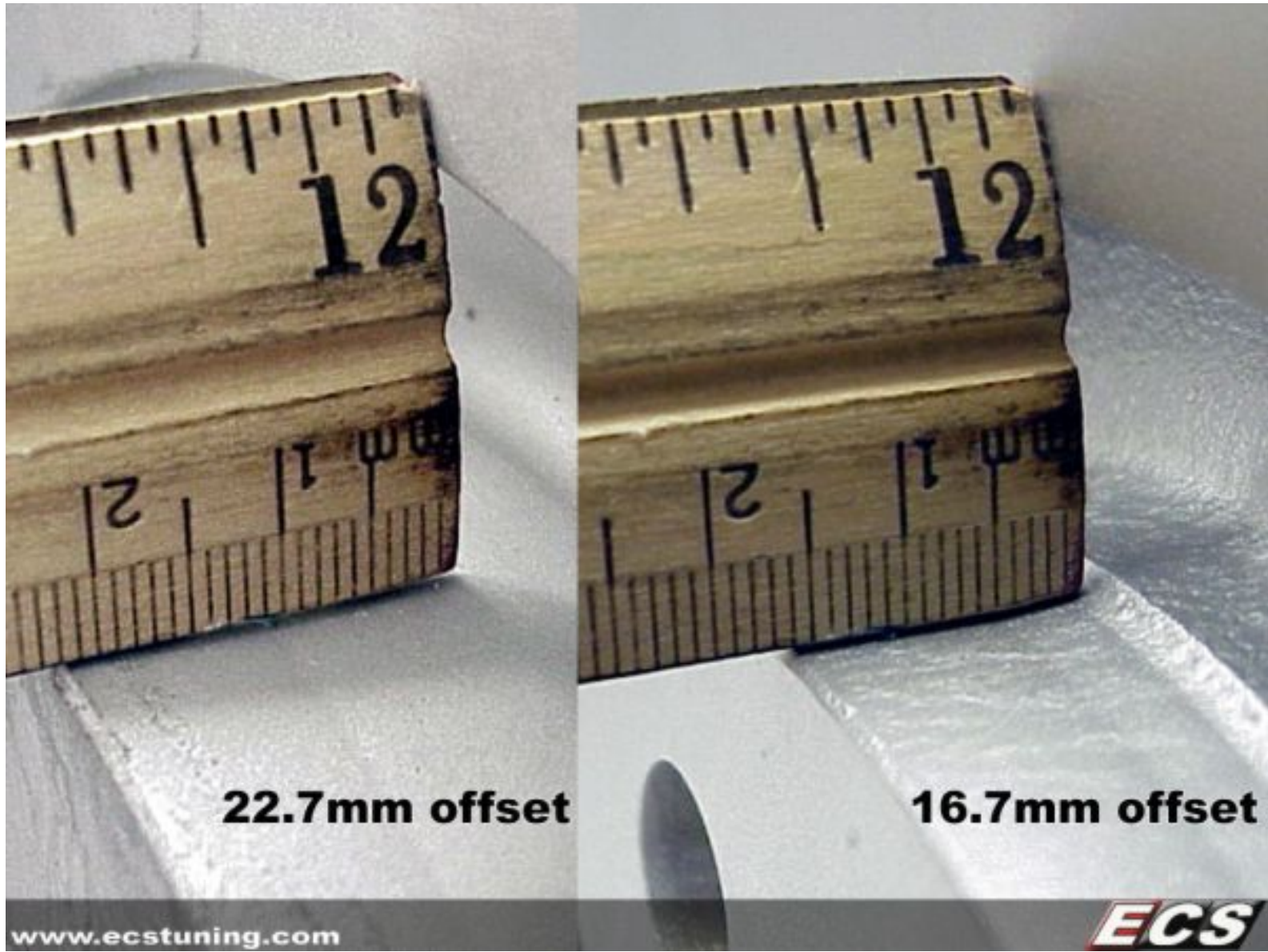
Brake caliper, piston	diameter in mm	57	57	60	42.8	28.32
Pad thickness without backplate	mm	14	14	14	14	11.4

00-2

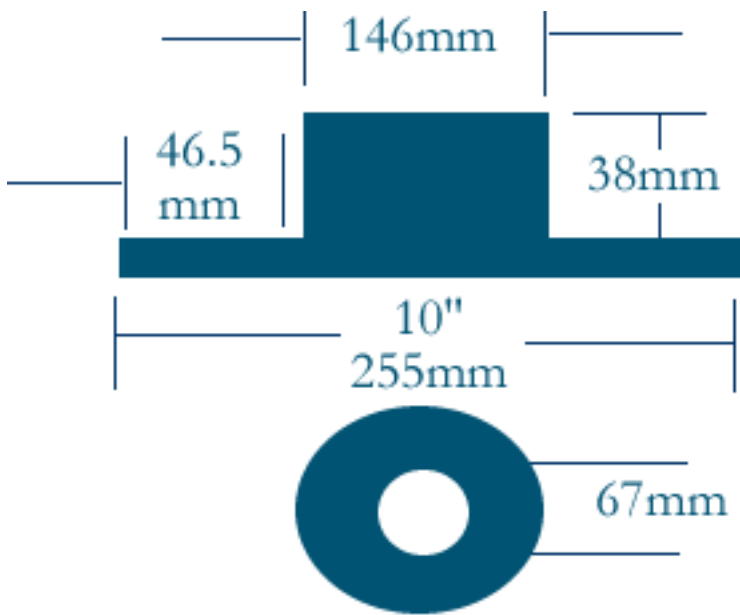


Rear Brakes					
Brake caliper (Lucas)		C 38	C 43 (16")	C 43 (16")	C 43 (16")
Production-relevant-No. (Pr. No.)		1KD	1KE	1KE	1KZ
Brake disc, not vented	diameter mm	245	255		
Brake disc, vented	diameter mm			269	355
Brake disc, thickness	mm	10	10	22	22
Brake disc, (wear limit)	mm	8	8	20	20
Brake caliper, pistons	diameter mm	38.1/ 36.0	42.8/ 40.8	42.8/ 40.8	43/41

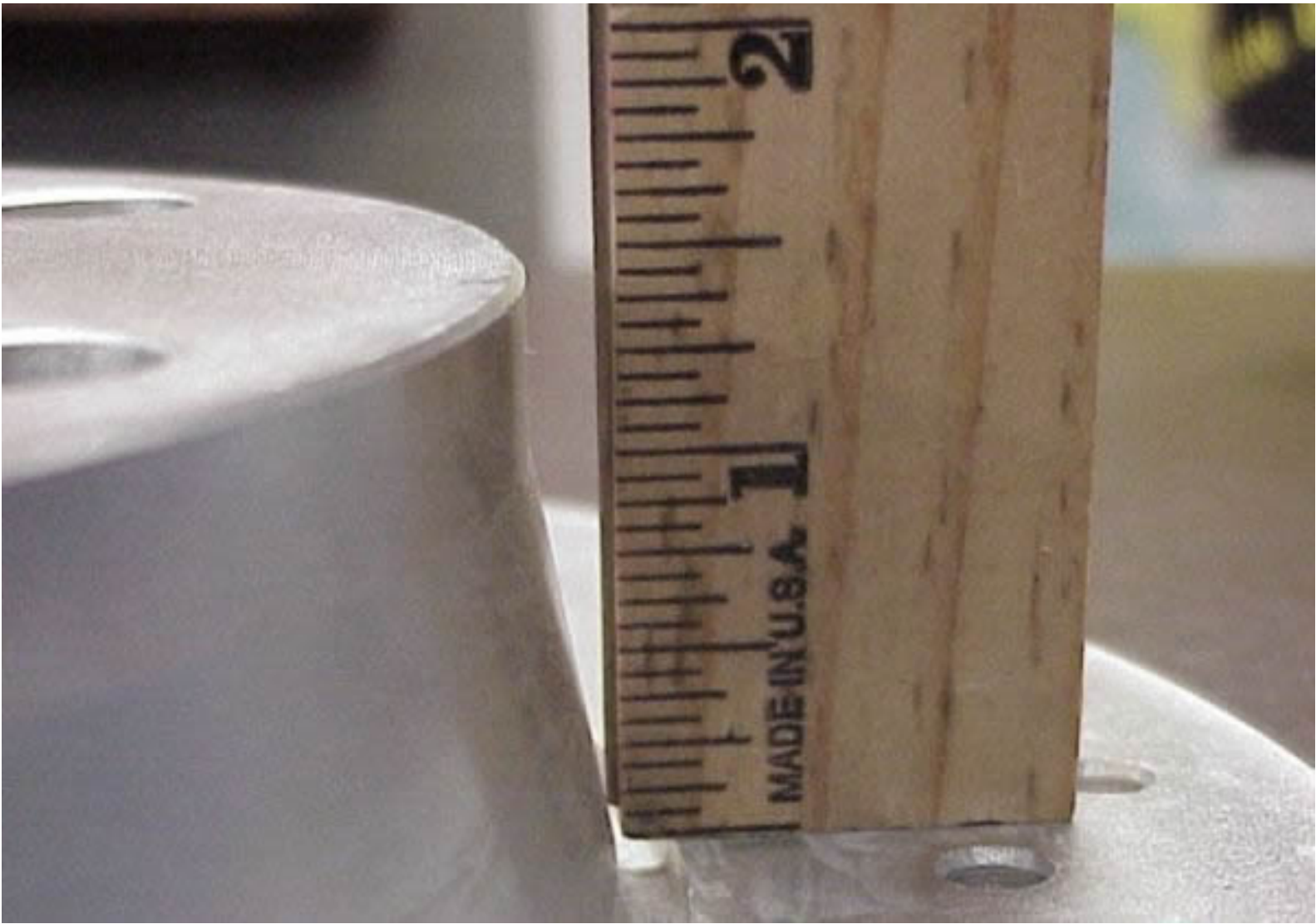
Pad thickness without backing plate	mm	12	12	12	12
Wear limit without backing plate	mm	2	2	2	2

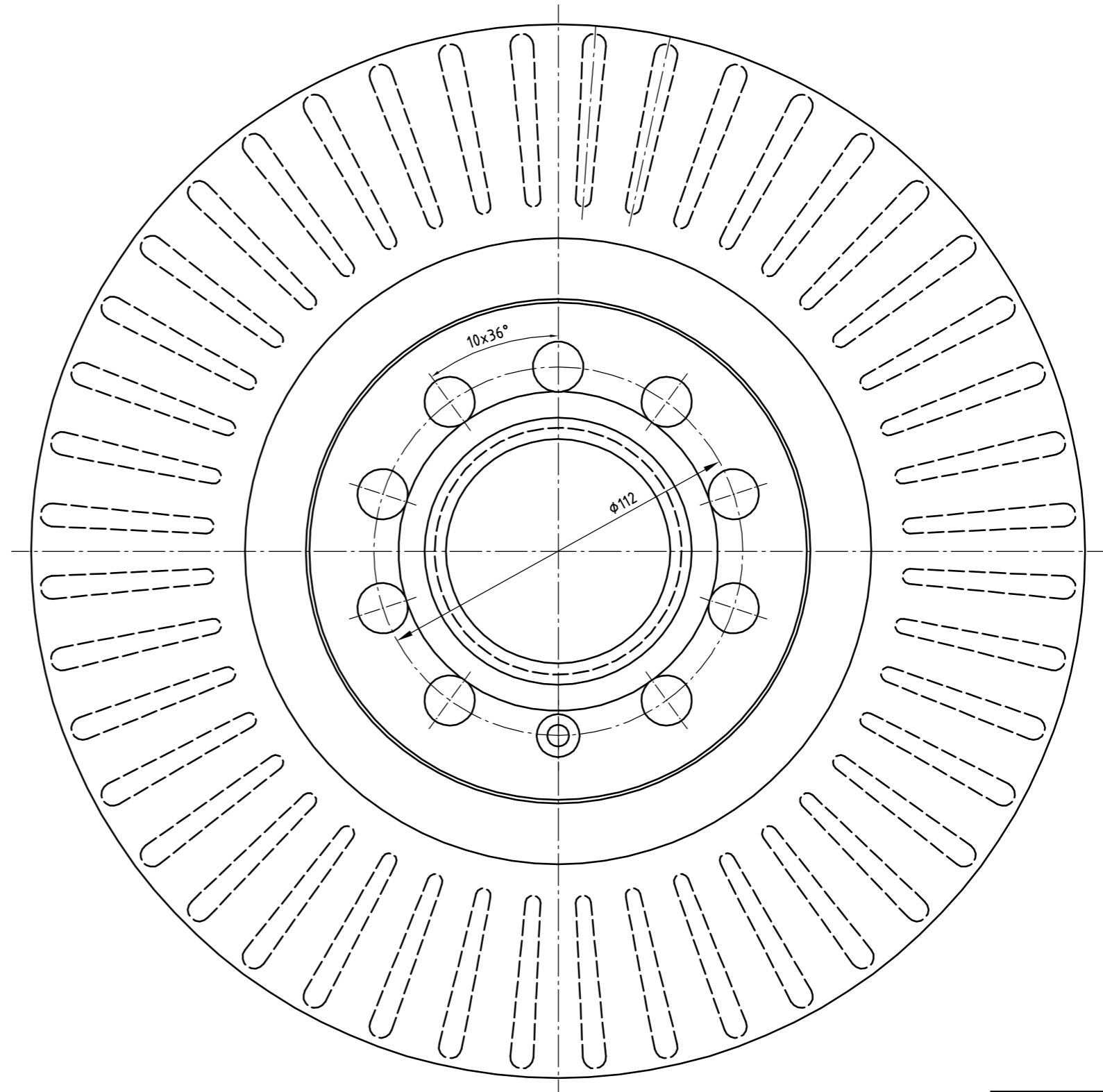
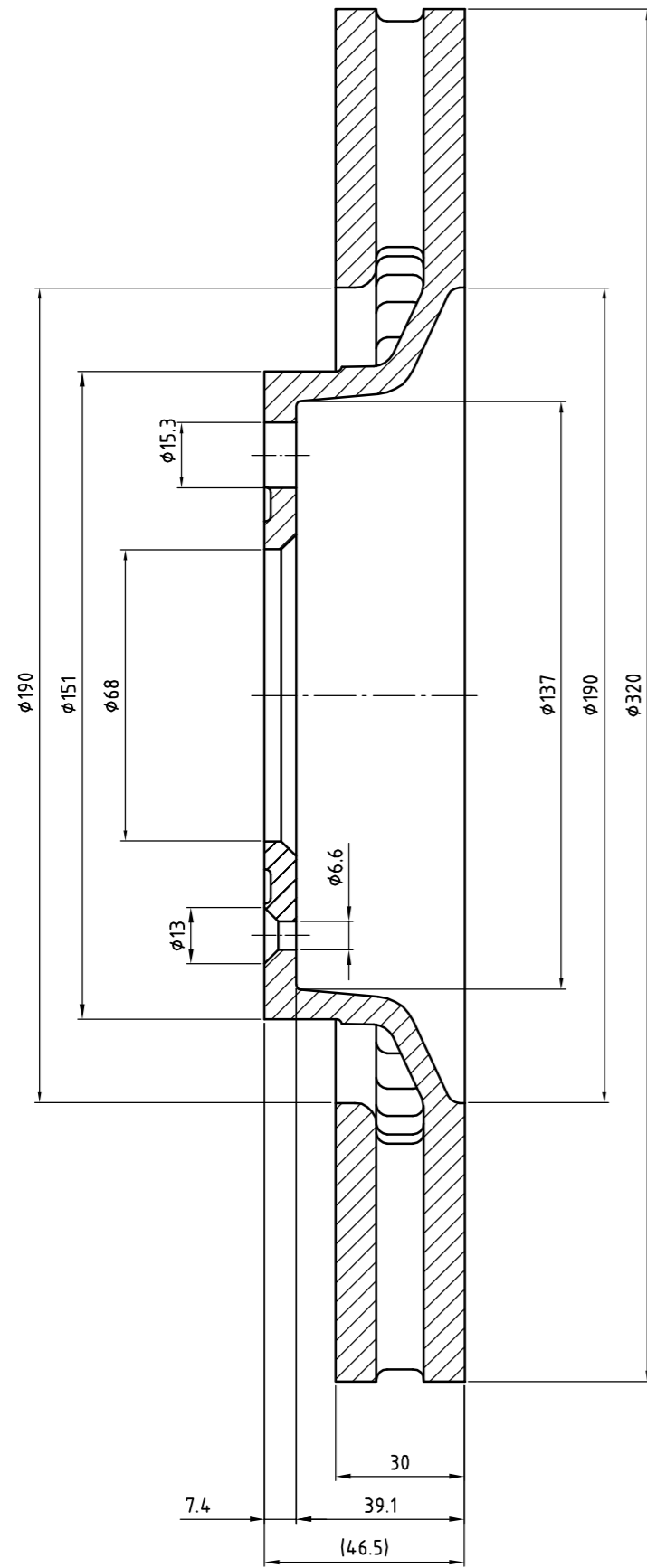






4B0 615 601 B





Min. Th. = 28 mm
Weight = 9,8 kg

OTTO ZIMMERMANN
 Maschinen- u. Apparatebau GmbH
 Am Leitzelbach 8
 D-74889 Sinsheim/Düren
 Tel.07261/94514-0, Fax 07261/94514-46

Ref. VAG Nr. 8E0 615 301 AD		Datum		Name		Maßstab	Position	Menge
		Bearb.	24.02.06	F.		Bremsscheibe bel.		
		Gepr.						
		Norm						
						100.124 9.00		Blatt
								Bl
Zust.	Änderungen	Datum	Name	Dateiname				



Most Popular Makes >> Audi >> A6 Quattro 2002 - 2004 >> Brake Components / Wheels >> Front Discs & Drums

Add to Sl

Part Number	Item	Pack Size	Qty ordered	Qty Req	Qty On Hand	Price	List
4B3 615 301 CRP <i>Check for alternates</i>	Front Brake Disc 2.7 Turbo V6 V8 Exc. RS6 321mm OD Girling Brakes	PIECE	2 <i>Add to want pad</i>	2	primary: 4 alt whse: YES		
8D0 615 301 J Zimmermann <i>Check for alternates</i>	Front Brake Disc 3.0 V6 Std. Brakes 312mm OD	PIECE	2 <i>Add to want pad</i>	2	primary: 11 alt whse: YES		
8D0 615 301 JSP Zimmermann Sport <i>Check for alternates</i>	Front Brake Disc 3.0 V6 Std. Brakes 312mm OD Drilled Sport Disc	PIECE	2 <i>Add to want pad</i>	2	primary: 2 alt whse: YES		
8D0 615 301 K Zimmermann <i>Check for alternates</i>	Front Brake Disc 3.0 V6 H.D. Brakes 321mm OD Ate Brakes	PIECE	2 <i>Add to want pad</i>	2	primary: 22 alt whse: YES		
8D0 615 301 KSP Zimmermann Sport <i>Check for alternates</i>	Front Brake Disc 3.0 V6 H.D. Brakes 321mm OD Ate Brakes Drilled Sport Disc	PIECE	2 <i>Add to want pad</i>	2	primary: 6 alt whse: YES		



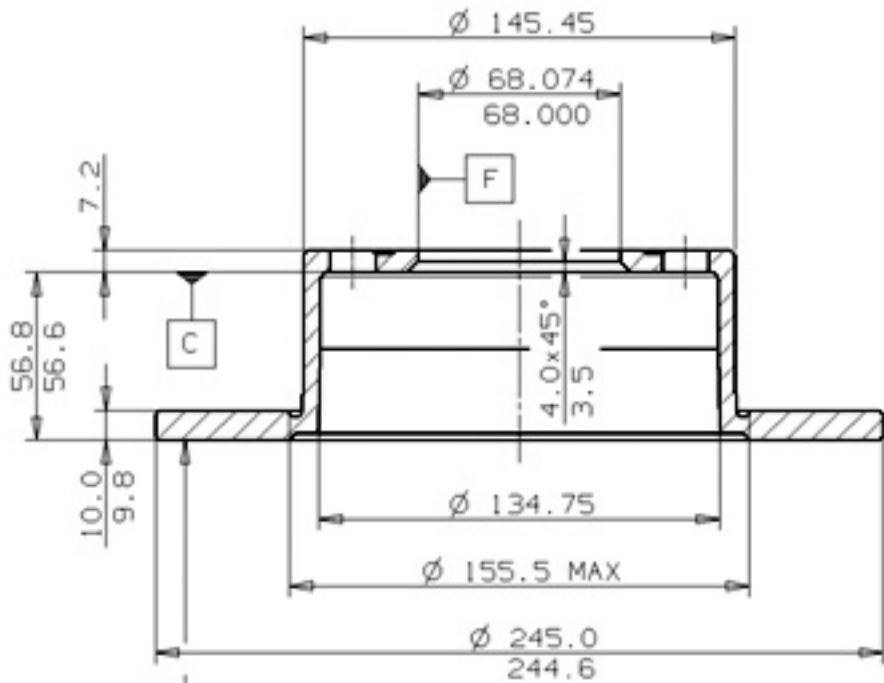
8E0 615 301 R Ate <i>Check for alternates</i>	Front Brake Disc 3.0 V6 Std. Brakes 312mm OD	PIECE	2 <i>Add to want pad</i>	2	<i>primary: 0</i> <i>alt whse: NO</i>
8D0 615 301 M Ate <i>Check for alternates</i>	Front Brake Disc 3.0 V6 H.D. Brakes 321mm OD Ate Brakes	PIECE	2 <i>Add to want pad</i>	2	<i>primary: 0</i> <i>alt whse: YES</i>
405 54 015 OPparts <i>Check for alternates</i>	Front Brake Disc 3.0 V6 H.D. Brakes 321mm OD Ate Brakes	PIECE	2 <i>Add to want pad</i>	2	<i>primary: 1</i> <i>alt whse: YES</i>

IMC - Importer & Distributor of German, Swedish, British and Asian Auto Parts
© Copyright 2005 Interamerican Motor Corporation - IMC. All Rights Reserved.
Click [here](#) for more legal information.

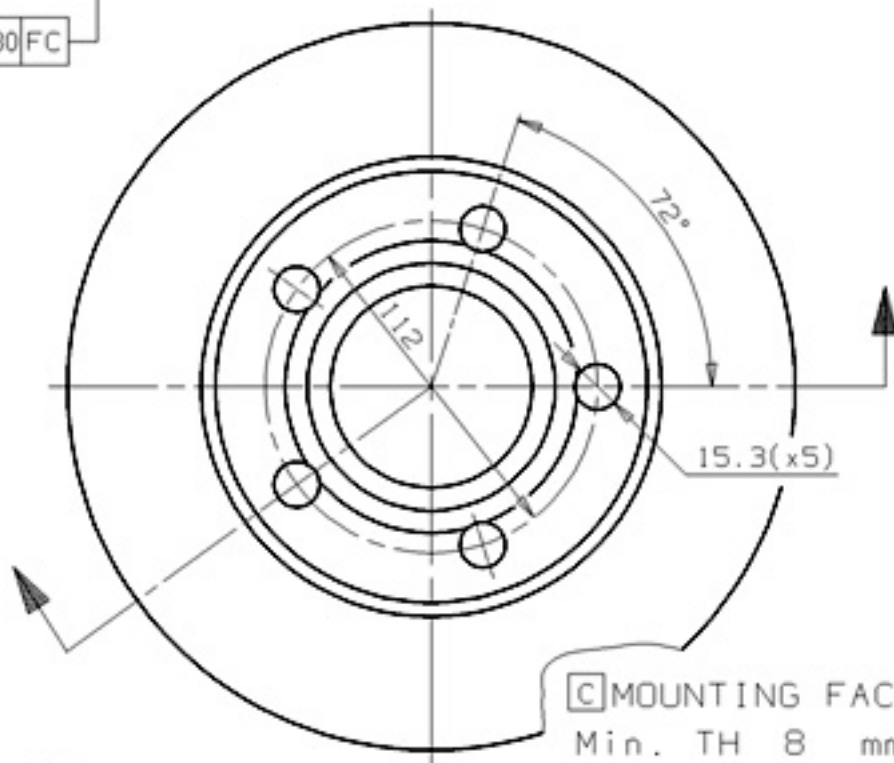


AUDI P.N.: 4A0 615 601 A 08.5743.10 A

CUSTOMER P. N. Date 01.04.98



0.080 FC



C MOUNTING FACE
Min. TH 8 mm
Weight 3.64 Kg

Type DP