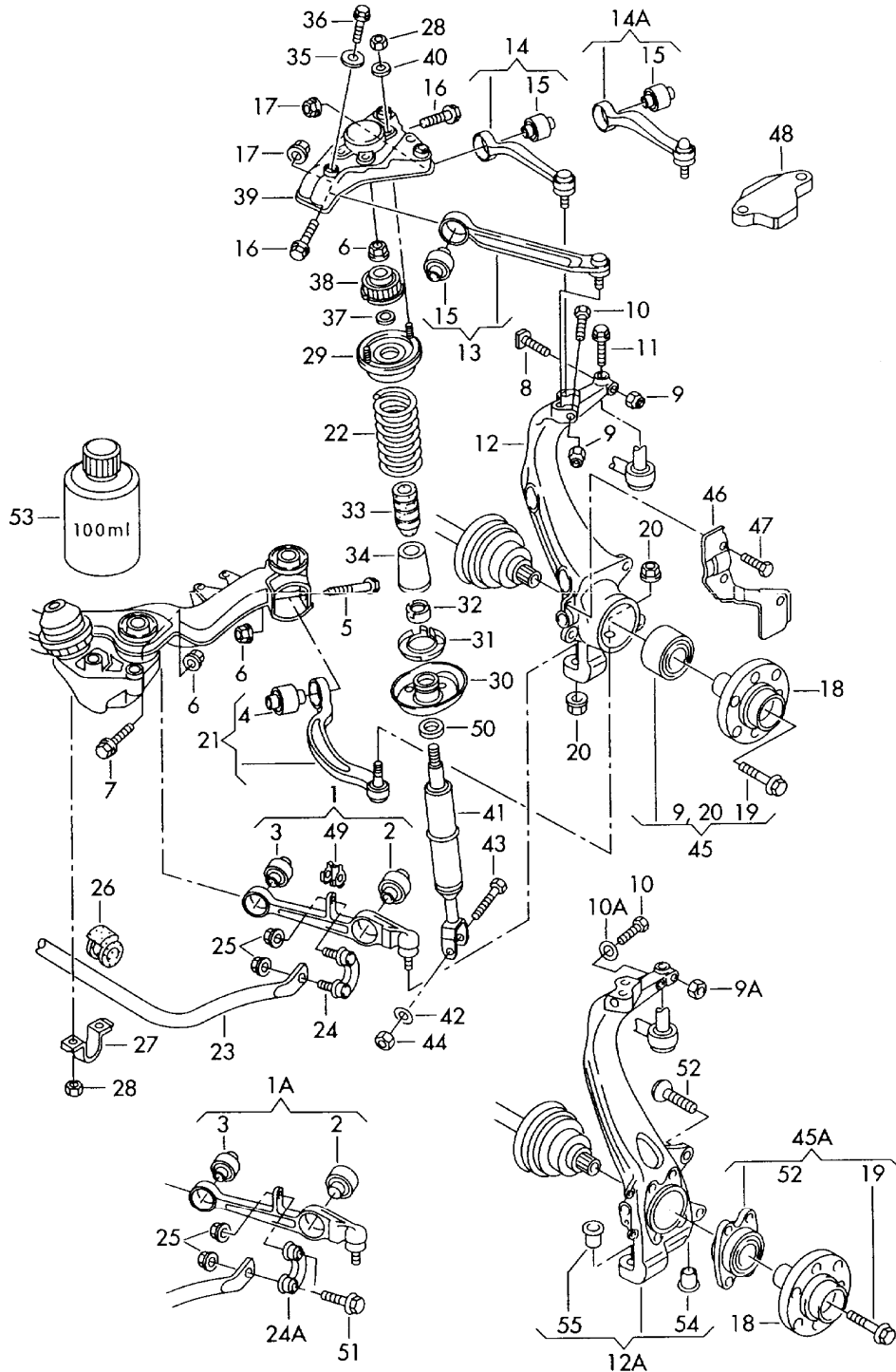




ETKA

Model	Year	MG	SG	Illustration	Restrictions	UPD	19:30	26.07.2004
A4Q	2000	4	07	407-11		676		





ETKA

Model	Year	MG	SG	Illustration	Restrictions	UPD	19:30	26.07.2004
A4Q	2000	4	07	407-11		676		

Pos	Part Number	Name	Remarks	Qty	Model
		control arm wheel bearing housing wheel hub suspension stabilizer	front		4 cylinder: AEB,ATW,AWM; 6 cylinder: AHA,ATQ; S4:APB
1A	4D0 407 151 P	control arm		2	AEB,ATW,AHA, ATQ,AWM
(1A)	4B3 407 151 C	control arm F >> 8D-Y-080 000*		2	APB
(1A)	4D0 407 151 P	control arm F 8D-Y-080 001>>		2	APB
2	4D0 407 181 H	bonded rubber mounting		2	
3	4D0 407 182 E	bonded rubber mounting		2	
4	4D0 407 183 AB	bonded rubber mounting		2	
5	N 906 259 02	bolt, hex. hd. with pin (combi)	M12X1,5X120X80	2	
6	N 101 064 02	shouldered hex. nut, self-locking	M12X1,5	6	
7	N 102 949 01	bolt, hex. hd. (combi.)	M12X1,5X100-	2	
8	+ 4D0 407 192 C	lock screw	M10X50	2	
9	+ N 102 861 02	shouldered hex. nut, self-locking	M10	4	
9	+ N 102 861 02	shouldered hex. nut, self-locking F >> 8D-Y-080 000*	M10	2	APB
9	+ N 102 861 02	shouldered hex. nut, self-locking F 8D-Y-080 001>>*	M10	4	APB
9A	N 908 923 01	hex. nut, self-locking F >> 8D-Y-080 000*	M10	2	APB
(10)	+ N 034 790 7	screw, hex. hd.	M10X100	2	
10	N 104 682 01	screw, hex. hd. F >> 8D-Y-080 000*	M10X95X20	2	APB
10	+ N 034 790 7	screw, hex. hd. F 8D-Y-080 001>>*	M10X100	2	APB



ETKA

Model	Year	MG	SG	Illustration	Restrictions	UPD	19:30	26.07.2004
A4Q	2000	4	07	407-11		676		

Pos	Part Number	Name	Remarks	Qty	Model
10A	N 104 061 05	washer F >> 8D-Y-080 000*	20X10,5X2	2	APB
11	+ N 906 289 01	bolt, hex. hd. (combi.)	M8X25	2	
12	8D0 407 257 AL	wheel bearing housing	75MM left	1	AEB,ATW,
(12)	8D0 407 258 AL	wheel bearing housing	75MM right	1	AEB,ATW
(12)	8D0 407 257 AM	wheel bearing housing	82MM left	1	AHA,ATQ,AWM
(12)	8D0 407 258 AM	wheel bearing housing	82MM right	1	AHA,ATQ,AWM
12A	4B3 407 253 G	wheel bearing housing F >> 8D-Y-080 000*	82MM left	1	APB
(12)	4B3 407 257 E	wheel bearing housing F 8D-Y-080 001>>*	82MM left	1	APB
(12A)	4B3 407 254 G	wheel bearing housing F >> 8D-Y-080 000*	82MM right	1	APB
(12)	4B3 407 258 E	wheel bearing housing F 8D-Y-080 001>>*	82MM right	1	APB
(13)	8E0 407 505 C	upper link F >> 8D-1-082 000*	left front upper	1	PR-1BD:APB PR-1BV
(13)	8E0 407 505 C	upper link F 8D-1-082 001>>	left front upper	1	PR-1BD:APB
(13)	8E0 407 505 A	upper link F 8D-1-082 001>>	left front upper	1	PR-1BV
13	8E0 407 505 A	upper link	left front upper	1	PR-1BA,1BE: AEB,ATW,AHA, ATQ,AWM
(13)	8E0 407 506 C	upper link F >> 8D-1-082 000*	right front upper	1	PR-1BD:APB; PR-1BV
(13)	8E0 407 506 C	upper link F 8D-1-082 001>>	right front upper	1	PR-1BD:APB
(13)	8E0 407 506 A	upper link F 8D-1-082 001>>	right front upper	1	PR-1BV



ETKA

Model	Year	MG	SG	Illustration	Restrictions	UPD	19:30	26.07.2004
A4Q	2000	4	07	407-11		676		

Pos	Part Number	Name	Remarks	Qty	Model
(13)	8E0 407 506 A	upper link	right front upper	1	PR-1BA,1BE: AEB,ATW,AHA, ATQ,AWM
(14A)	8E0 407 509 C	upper link F >> 8D-1-082 000*	left rear upper	1	PR-1BD:APB; PR-1BV
(14A)	8E0 407 509 C	upper link F 8D-1-082 001>>	left rear upper	1	PR-1BD:APB
(14A)	8E0 407 509 A	upper link F 8D-1-082 001>>	left rear upper	1	PR-1BV
(14A)	8E0 407 509 A	upper link	left rear upper	1	PR-1BA,1BE: AEB,ATW,AHA, ATQ,AWM
(14A)	8E0 407 510 C	upper link F >> 8D-1-082 000*	right rear upper	1	PR-1BD:APB; PR-1BV
(14A)	8E0 407 510 C	upper link F 8D-1-082 001>>	right rear upper	1	PR-1BD:APB
(14A)	8E0 407 510 A	upper link F 8D-1-082 001>>	right rear upper	1	PR-1BV
(14A)	8E0 407 510 A	upper link	right rear upper	1	PR-1BA,1BE: AEB,ATW,AHA, ATQ,AWM
15	8D0 407 515 B	bonded rubber mounting F >> 8D-1-082 000*		4	PR-1BD:APB; PR-1BV
15	8D0 407 515 B	bonded rubber mounting F 8D-1-082 001>>*		4	PR-1BD:APB
(15)	4B0 407 515	bonded rubber mounting F 8D-1-082 001>>*		4	PR-1BV
(15)	4B0 407 515	bonded rubber mounting		4	PR-1BA,1BE: AEB,ATW,AHA, ATQ,AWM
(16)	N 104 253 02	bolt, hex. hd. (combi.)	M10X62X45	4	
17	N 102 861 10	shouldered hex. nut, self-locking	M10	4	



ETKA

Model	Year	MG	SG	Illustration	Restrictions	UPD	19:30	26.07.2004
A4Q	2000	4	07	407-11		676		

Pos	Part Number	Name	Remarks	Qty	Model
18	4A0 407 615 G	wheel hub	5/112	2	AHA, ATQ, APB, AWM
(18)	8D0 407 615 E	wheel hub	5/112	2	AEB, ATW
(19)	* 4A0 407 643 A	shouldered bolt F >> 8D-1-050 000*	M16X1,5X77	2	AHA, ATQ, APB, AWM
(19)	4B0 407 643 A	shouldered bolt F 8D-1-050 001>>*	M16X1,5X72	2	AHA, ATQ, APB, AWM
(19)	4B0 407 643	shouldered bolt	M14X1,5X73	2	AEB, ATW
20	* 4D0 407 644 A	shouldered nut	M12X1,5	4	AEB, ATW, AHA, ATQ, AWM
(20)	N 908 484 01	hex. nut, self-locking with washer F >> 8D-Y-080 000*	M12X1,5	4	APB
20	* 4D0 407 644 A	shouldered nut F 8D-Y-080 001>>*	M12X1,5	4	APB
21	8E0 407 693 Q	wishbone link	left also use: N 906 259 02	1 1	
(21)	8E0 407 694 Q	wishbone link	right front also use: N 906 259 02	1 1	
22	8D0 411 105 AL	coil spring 1 paint mark 1 paint mark	violet brown	2	PR-1BA/0JB
(22)	8D0 411 105 AM	coil spring 1 paint mark 2 paint marks	violet brown	2	PR-1BA/0JC
(22)	8D0 411 105 AN	coil spring 1 paint mark 3 paint marks	violet brown	2	PR-1BA/0JD
(22)	8D0 411 105 AP	coil spring 1 paint mark 1 paint mark	white brown	2	PR-1BA/0JE
(22)	8D0 411 105 AQ	coil spring 1 paint mark 2 paint marks	white brown	2	PR-1BA/0JF



ETKA

Model	Year	MG	SG	Illustration	Restrictions	UPD	19:30	26.07.2004
A4Q	2000	4	07	407-11		676		

Pos	Part Number	Name	Remarks	Qty	Model
(22)	8D0 411 105 AR	coil spring 1 paint mark 3 paint marks	white brown	2	PR-1BA/0JG
(22)	8D0 411 105 AS	coil spring 1 paint mark 1 paint mark	yellow brown	2	PR-1BA/0JH
(22)	8D0 411 105 AT	coil spring 1 paint mark 2 paint marks	yellow brown	2	PR-1BA/0JJ
(22)	8D0 411 105 BA	coil spring 1 paint mark 3 paint marks	yellow brown	2	PR-1BA/0JK
(22)	8D0 411 105 BM	coil spring 1 paint mark 1 paint mark	green brown	2	PR-1BA/0JL
(22)	8D0 411 105 L	coil spring 1 paint mark 1 paint mark	grey violet	2	PR-1BE/0JB; PR-1BD/0JB; PR-1BV/0JB
(22)	8D0 411 105 M	coil spring 1 paint mark 2 paint marks	grey violet	2	PR-1BE/0JC; PR-1BD/0JC; PR-1BV/0JC
(22)	8D0 411 105 P	coil spring 1 paint mark 3 paint marks	grey violet	2	PR-1BE/0JD; PR-1BD/0JD; PR-1BV/0JD
(22)	8D0 411 105 Q	coil spring 1 paint mark 1 paint mark	green violet	2	PR-1BE/0JE; PR-1BD/0JE; PR-1BV/0JE
(22)	8D0 411 105 R	coil spring 1 paint mark 2 paint marks	green violet	2	PR-1BE/0JF; PR-1BD/0JF; PR-1BV/0JF
(22)	8D0 411 105 FF	coil spring 1 paint mark 1 paint mark	brown blue	2	PR-1BE/0JG; PR-1BD/0JG; PR-1BV/0JG
(22)	8D0 411 105 FG	coil spring 1 paint mark 2 paint marks	brown blue	2	PR-1BE/0JH; PR-1BD/0JH; PR-1BV/0JH
(22)	8D0 411 105 FH	coil spring 1 paint mark 3 paint marks	brown blue	2	PR-1BE/0JJ; PR-1BD/0JJ; PR-1BV/0JJ



ETKA

Model	Year	MG	SG	Illustration	Restrictions	UPD	19:30	26.07.2004
A4Q	2000	4	07	407-11		676		

Pos	Part Number	Name	Remarks	Qty	Model
(22)	8D0 411 105 FJ	coil spring 1 paint mark 2 paint marks	brown grey	2	PR-1BE/0JK; PR-1BD/0JK; PR-1BV/0JK
(23)	8D0 411 309 M	stabilizer	29MM	1	PR-1BA
(23)	8D0 411 309 L	stabilizer for sports-type running gear	29MM	1	PR-1BE,1BD, 1BV
24A	8D0 411 317 D	connecting link marked with:	left blue	1	
(24A)	8D0 411 318 D	connecting link marked with:	right yellow	1	
(25)	+ N 102 861 02	shouldered hex. nut, self-locking	M10	4	
(26)	4D0 411 327 H	rubber isolator	27MM	2	PR-1BA
(26)	4D0 411 327 H	rubber isolator for sports-type running gear	27MM	2	PR-1BE,1BD, 1BV
27	4D0 411 336 D	clamp		2	
28	+ N 901 838 02	shouldered hex. nut	M8	8	
(29)	8D0 412 065 F	spring seat	upper	2	
30	8D0 412 103 B	spring seat F >> 8D-1-030 000*	lower	2	
31	4D0 412 107 B	packing F >> 8D-1-030 000*	lower	2	
(30)	8D0 412 066 F	spring seat F 8D-1-030 001>>*	lower	2	
32	4D0 412 127	protective cap	lower	2	
(33)	8D0 412 131 F	helper spring		2	PR-1BA
(33)	8D0 412 131 E	helper spring for sports-type running gear		2	PR-1BE,1BD, 1BV
34	4D0 412 137 C	boot		2	
35	8D0 412 145 B	washer	5X16,2X40	6	
36	N 908 476 01	bolt, hex. hd. with shoulder	M10X25	6	
37	4D0 412 369 A	washer	4X12,1X20	2	



ETKA

Model	Year	MG	SG	Illustration	Restrictions	UPD	19:30	26.07.2004
A4Q	2000	4	07	407-11		676		

Pos	Part Number	Name	Remarks	Qty	Model
38	4D0 412 377 F	mounting	upper	2	
(39)	8D0 412 383 E	bracket		2	
41	8D0 413 031 BM	gas-filled shock absorber		2	PR-1BA: AEB,ATW,AWM
		also use:	*>>8D-1-030000 8D0 412 066 F	2	
(41)	8D0 413 031 BM	gas-filled shock absorber		2	PR-1BA: AHA,ATQ
		also use:	*>>8D-1-030000 8D0 412 066 F	2	
41	8D0 413 031 BA	gas-filled shock absorber F >> 8D-1-030 000* for sports-type running gear		2	PR-1BV
(41)	8D0 413 031 BT	gas-filled shock absorber F 8D-1-030 001>> 8D-1-082 000* for sports-type running gear		2	PR-1BV
(41)	8D0 413 031 BL	gas-filled shock absorber F 8D-1-082 001>>*		2	PR-1BV:AWM
(41)	8D0 413 031 BN	gas-filled shock absorber F 8D-1-082 001>>*		2	PR-1BV:ATQ
(41)	8D0 413 031 BL	gas-filled shock absorber for sports-type running gear		2	PR-1BE:AEB, ATW,AWM
(41)	8D0 413 031 BN	gas-filled shock absorber		2	PR-1BE:AHA, ATQ
(41)	8D0 413 031 BR	gas-filled shock absorber for sports-type running gear		2	PR-1BD:APB
		also use:	*>>8D-1-030000 8D0 412 066 F	2	
43	N 102 412 02	screw, hex. hd.	M12X1,5X85	2	
44	N 101 064 02	shouldered hex. nut, self-locking	M12X1,5	2	
(45)	4B0 498 625 A	wheel bearing with mounting parts	82MM	2	AHA,ATQ,AWM
45	4B0 498 625	wheel bearing with mounting parts	75MM	2	AEB,ATW



ETKA

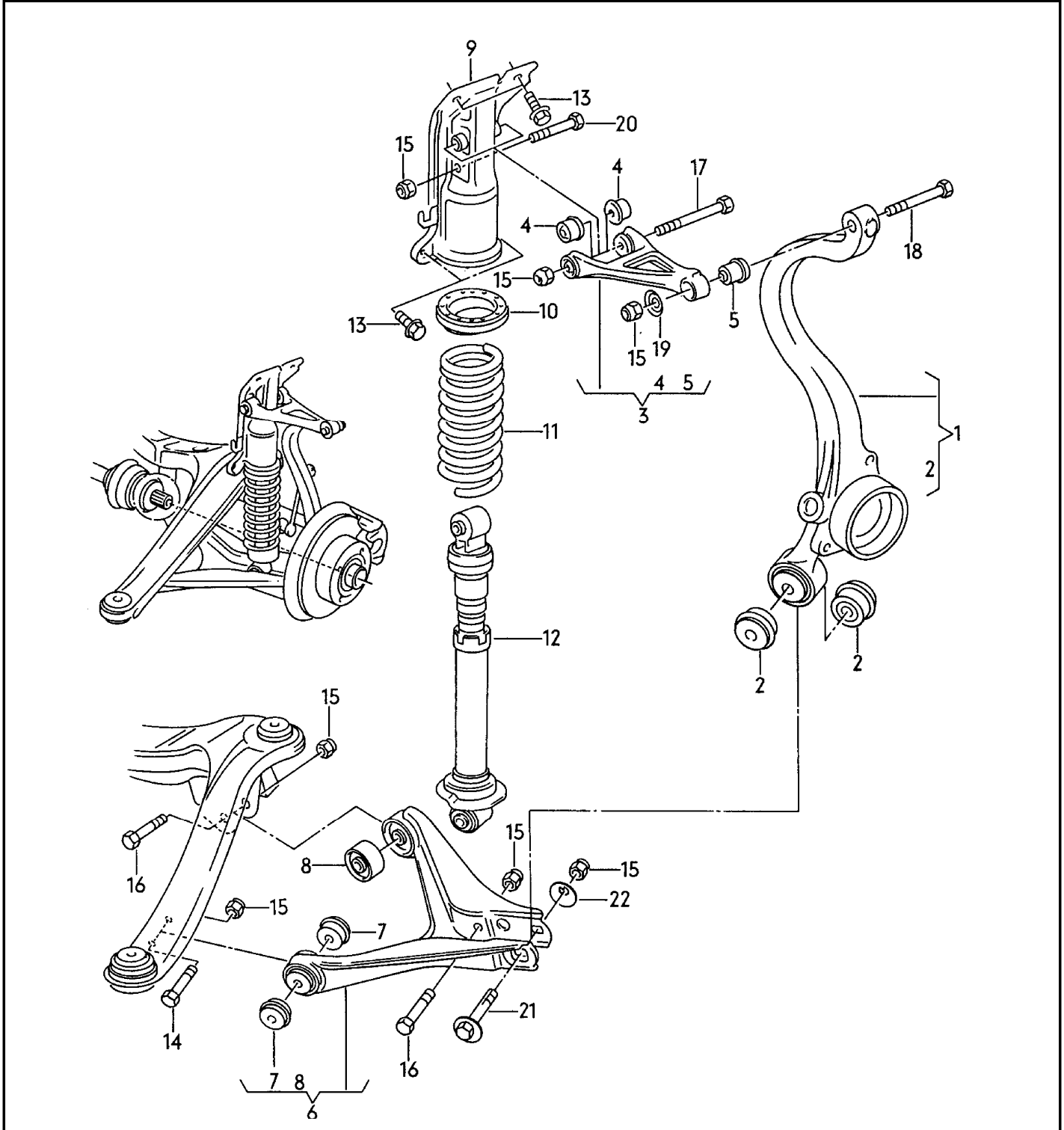
Model	Year	MG	SG	Illustration	Restrictions	UPD	19:30	26.07.2004
A4Q	2000	4	07	407-11		676		

Pos	Part Number	Name	Remarks	Qty	Model
45A	8E0 498 625 B	wheel bearing with mounting parts F >> 8D-Y-080 000*	82MM	2	APB
(45)	4B0 498 625 A	wheel bearing with mounting parts F 8D-Y-080 001>>*	82MM	2	APB
46		splash shield for brake disc see illustration:	615-..		
47	+ N 905 293 01	screw, hex. hd.	M6X10	6	
52	4D0 505 445	ball screw F >> 8D-Y-080 000*	M12X1,5X45	8	APB
53	G 294 421 A1	assembly lubricant see workshop manual	100ML	X	
54		not a spare part			
55		not a spare part			



ETKA

Model	Year	MG	SG	Illustration	Restrictions	UPD	19:50	26.07.2004
A4Q	2001	5	05	505-35		676		





ETKA

Model	Year	MG	SG	Illustration	Restrictions	UPD	19:50	26.07.2004
A4Q	2001	5	05	505-35		676		

Pos	Part Number	Name	Remarks	Qty	Model
		wheel bearing housing suspension	rear		
1	8D0 505 427	wheel bearing housing	75MM left	1	
(1)	8D0 505 428	wheel bearing housing	75MM right	1	
2	8D0 505 171	bonded rubber mounting		4	
(3)	8D0 505 323 A	track control arm F >> 8D-1-082 000*	upper	2	PR-1BD:APB; PR-1BV
(3)	8D0 505 323 A	track control arm F 8D-1-082 001>>*	upper	2	PR-1BD:APB
(3)	8D0 505 323 B	track control arm F 8D-1-082 001>>*	left upper	1	PR-1BV
(3)	8D0 505 324 B	track control arm F 8D-1-082 001>>*	right upper	1	PR-1BV
3	8D0 505 323 B	track control arm	left upper	1	PR-1BA,1BE
(3)	8D0 505 324 B	track control arm	right upper	1	PR-1BA,1BE
4	8D0 505 185 A	bonded rubber mounting	inner	4	
5	8A0 505 172 B	bonded rubber mounting	outer	2	
6	8D0 505 311	track control arm	left lower	1	
(6)	8D0 505 312	track control arm	right lower	1	
7	8D0 511 247	bonded rubber mounting	front, inner	4	
8	8D0 511 523	mounting	rear, inner	2	
9	8D0 512 341	mounting	left	1	
(9)	8D0 512 342	mounting	right	1	
10	8A0 512 297 E	damping ring		2	
11	8D5 511 115 F	coil spring 2 paint marks 1 paint mark	white violet	2	PR-1BA/0YQ
(11)	8D5 511 115 G	coil spring 2 paint marks 2 paint marks	white violet	2	PR-1BA/0YR



ETKA

Model	Year	MG	SG	Illustration	Restrictions	UPD	19:50	26.07.2004
A4Q	2001	5	05	505-35		676		

Pos	Part Number	Name	Remarks	Qty	Model
(11)	8D9 511 115 D	coil spring 2 paint marks 3 paint marks	white violet		PR-1BA/0YS
(11)	8D9 511 115 D	coil spring F >> 8D-Y-080 000* 2 paint marks 3 paint marks	white violet	2	PR-1BA/0YT
(11)	8D9 511 115 S	coil spring F 8D-Y-080 001>>* 2 paint marks 1 paint mark	white orange	2	PR-1BA/0YT
(11)	8D5 511 115 D	coil spring for sports-type running gear 1 paint mark 1 paint mark	white pink		PR-1BD/0YQ; PR-1BE/0YQ; PR-1BV/0YQ
(11)	8D9 511 115 E	coil spring for sports-type running gear 1 paint mark 2 paint marks	white pink		PR-1BD/0YR; PR-1BE/0YR; PR-1BV/0YR
(11)	8D9 511 115 T	coil spring for sports-type running gear 1 paint mark 3 paint marks	white pink	2	PR-1BD/0YS; PR-1BE/0YS; PR-1BV/0YS
(11)	8D9 511 115 T	coil spring F 8D-Y-080 001>>* for sports-type running gear 1 paint mark 3 paint marks	white pink	2	PR-1BD/0YT; PR-1BE/0YT; PR-1BV/0YT
12	8D5 513 029 D	shock absorber F >> 8D-Y-165 000*		2	sedan: PR-1BA
(12)	8D5 513 029 G	gas-filled shock absorber F 8D-Y-165 001>>*		2	sedan: PR-1BA
(12)	8D9 513 029 A	shock absorber F >> 8D-Y-165 000*		2	AVANT: PR-1BA
(12)	8D9 513 029 C	gas-filled shock absorber F 8D-Y-165 001>>*		2	AVANT: PR-1BA
(12)	8D0 513 029 E	shock absorber for sports-type running gear		2	PR-1BD:APB



ETKA

Model	Year	MG	SG	Illustration	Restrictions	UPD	19:50	26.07.2004
A4Q	2001	5	05	505-35		676		

Pos	Part Number	Name	Remarks	Qty	Model
(12)	8D5 513 029 E	shock absorber for sports-type running gear		2	PR-1BE
(12)	8D0 513 029 F	shock absorber F >> 8D-1-082 000* for sports-type running gear		2	PR-1BV
(12)	8D5 513 029 E	shock absorber F 8D-1-082 001>>* for sports-type running gear		2	PR-1BV
13	N 905 635 01	bolt, hex. hd. (combi.)	M10X24	8	
14	N 010 183 5	screw, hex. hd.	M12X1,50X75	2	
15	N 906 350 01	hex. nut, self-locking	M12X1,5	18	
16	N 010 186 7	screw, hex. hd.	M12X1,50X85	4	
17	N 102 655 01	screw, hex. hd.	M12X1,5X212	2	
18	N 102 706 01	screw, hex. hd.	M12X1,50X102	2	
19	8A0 511 341 A	washer	42MM	2	
20	N 102 412 01	screw, hex. hd.	M12X1,50X85	2	
21	8A0 501 387 C	eccentric screw	M12X1,5X95	2	
22	8A0 501 385 A	eccentric washer		2	